

Children's Music Workshop

*presents*

The

**FLUTE  
FUN  
BOOK**

by Larry Newman

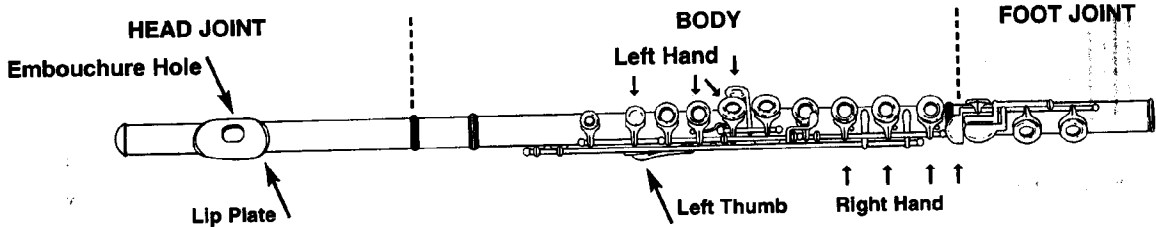
[www.bandfunbook.com](http://www.bandfunbook.com)

CHILDREN'S  
MUSIC  
WORKSHOP

Name \_\_\_\_\_

Room Number/Teacher \_\_\_\_\_

# Flute Fingering Chart



Flute fingering chart showing musical notation and fingering diagrams for various notes across five staves.

**Staff 1:** Notes C, C#, D, D#, E, E, F. Fingering diagrams are provided for each note.


**Staff 2:** Notes F#, G, G, G#, A, A, A#, B, B, C. Fingering diagrams are provided for each note, with an 'or' alternative for G and A.

**Staff 3:** Notes C#, D, D, D#, E, E, F, F, F#, G. Fingering diagrams are provided for each note, with an 'or' alternative for F.

**Staff 4:** Notes G, G#, A, A, A#, B, B, C. Fingering diagrams are provided for each note, with an 'or' alternative for A and B.

**Staff 5:** Notes C#, D, D, D#, E, E, F, F, G, G. Fingering diagrams are provided for each note.

# Fingering Chart



●●●●●●●●●●  
●●●●●●●●●●

Low  
**D**



Musical notation for Low D: Treble clef, one whole note on the second line (D4).



●●●●●●●●●●  
●●●●●●●●●●

**B**



Musical notation for B: Treble clef, one whole note on the fourth line (B4).



●●●●●●●●●●  
●●●●●●●●●●

Low  
**E**



Musical notation for Low E: Treble clef, one whole note on the first space (E4).




●●●●●●●●●●  
●●●●●●●●●●

**C**

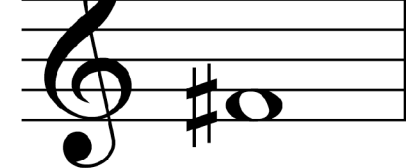


Musical notation for C: Treble clef, one whole note on the first line (C4).



●●●●●●●●●●  
●●●●●●●●●●

**F#**



Musical notation for F#: Treble clef, one whole note on the second space with a sharp sign (F#4).




●●●●●●●●●●  
●●●●●●●●●●

**D**



Musical notation for D: Treble clef, one whole note on the second space (D4).



●●●●●●●●●●  
●●●●●●●●●●

**G**



Musical notation for G: Treble clef, one whole note on the second space (G4).



●●●●●●●●●●  
●●●●●●●●●●

**E**



Musical notation for E: Treble clef, one whole note on the first space (E4).



●●●●●●●●●●  
●●●●●●●●●●

**A**



Musical notation for A: Treble clef, one whole note on the second space (A4).



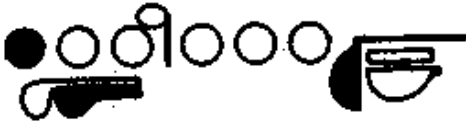
●●●●●●●●●●  
●●●●●●●●●●

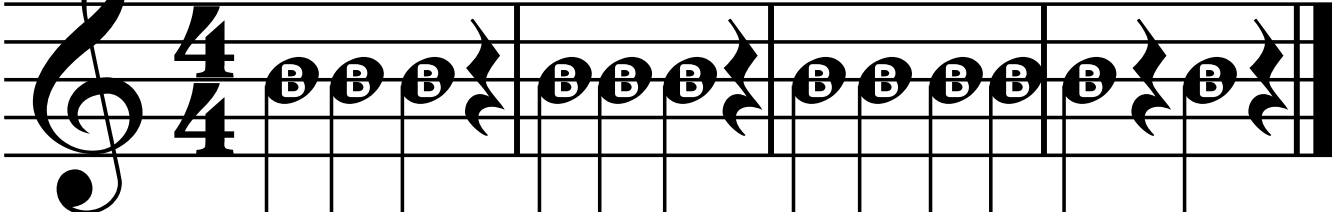
**F**




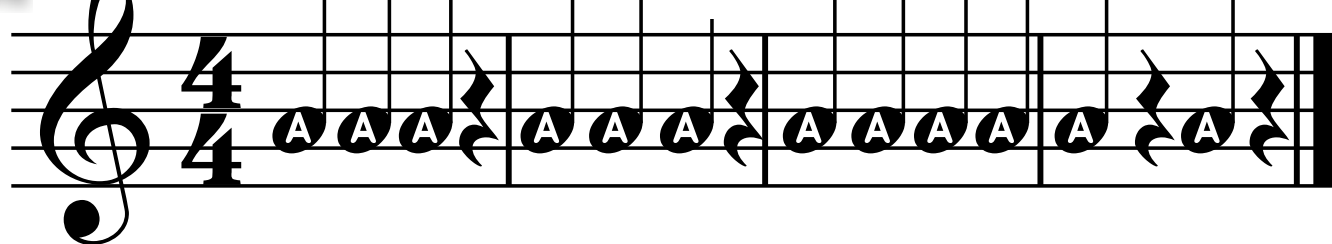
Musical notation for F: Treble clef, one whole note on the second space (F4).

4 Welcome to the wonderful world of flute playing.  
Your teacher has shown you how to hold your instrument  
and make a sound on the mouthpiece. Let's play our first song!

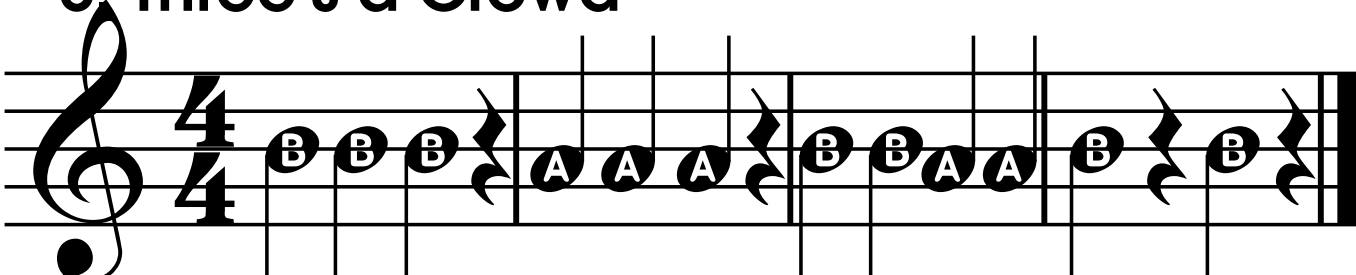
**NEW NOTE** 1. Our First Note  "B"



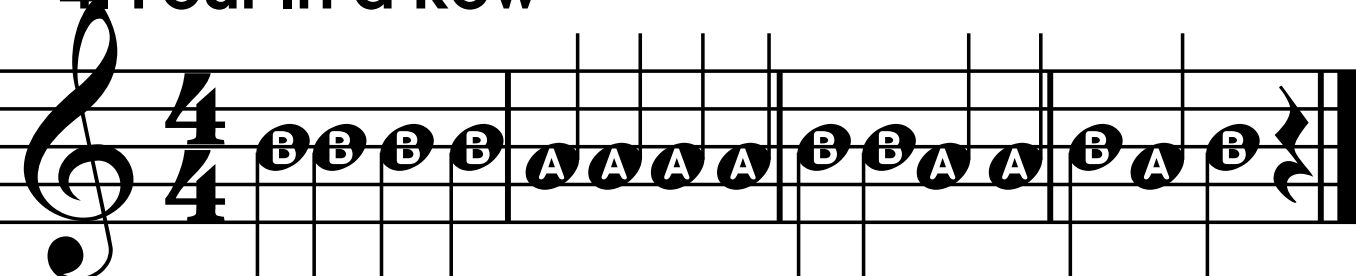
**NEW NOTE** 2. Our Second Note  "A"



### 3. Three's a Crowd



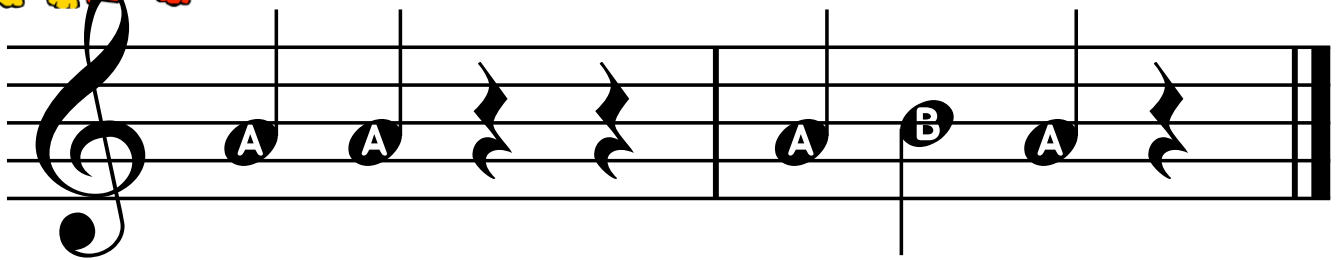
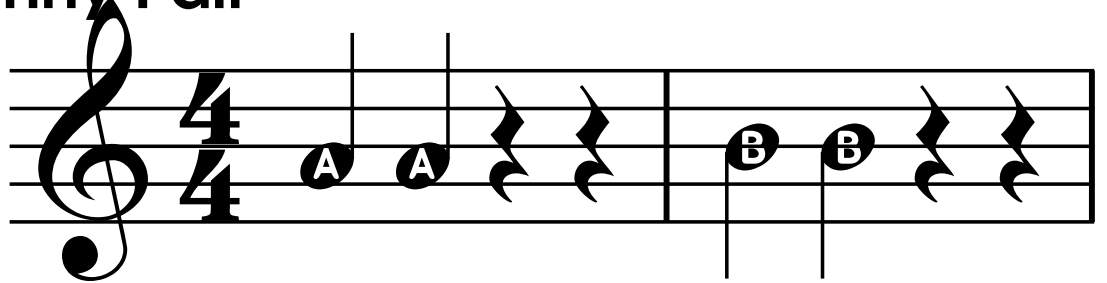
### 4. Four In a Row



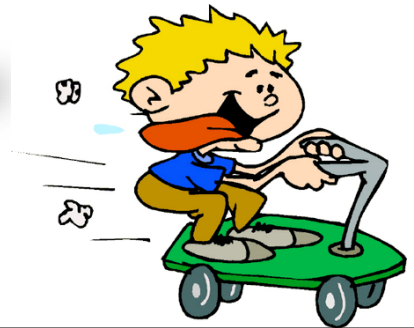


- Quarter notes get one beat of sound.
- Whole notes get four beats of sound.

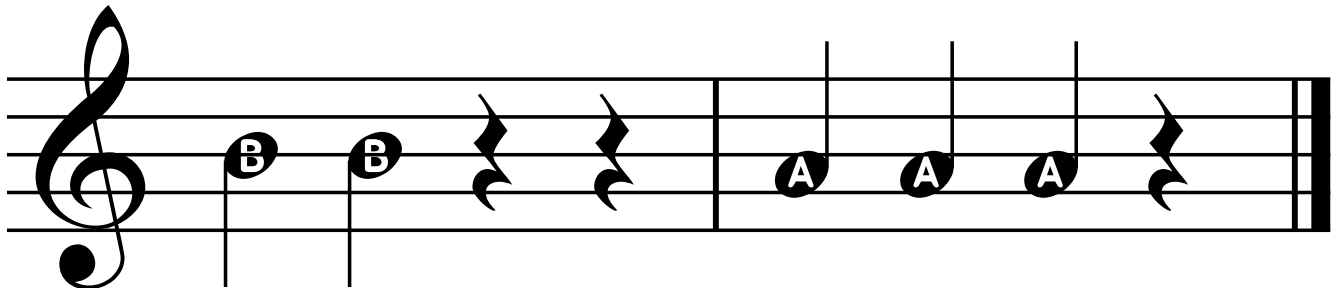
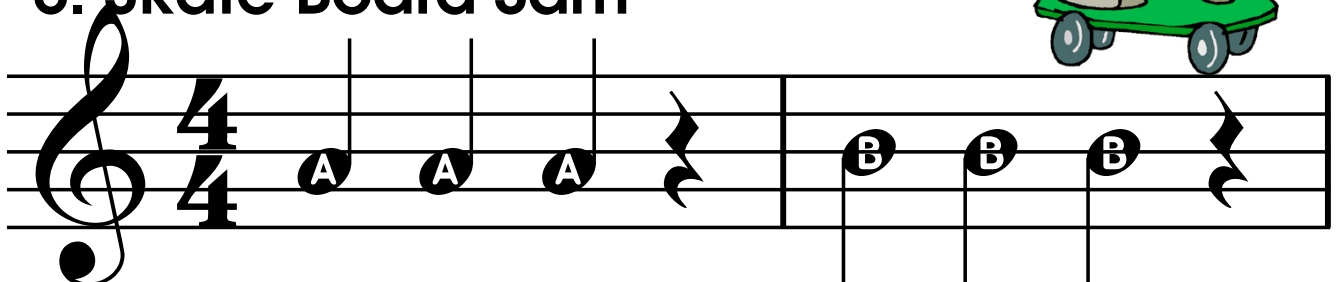
### 5. A Funny Pair



- ⏸ Quarter note rests get one beat of silence.

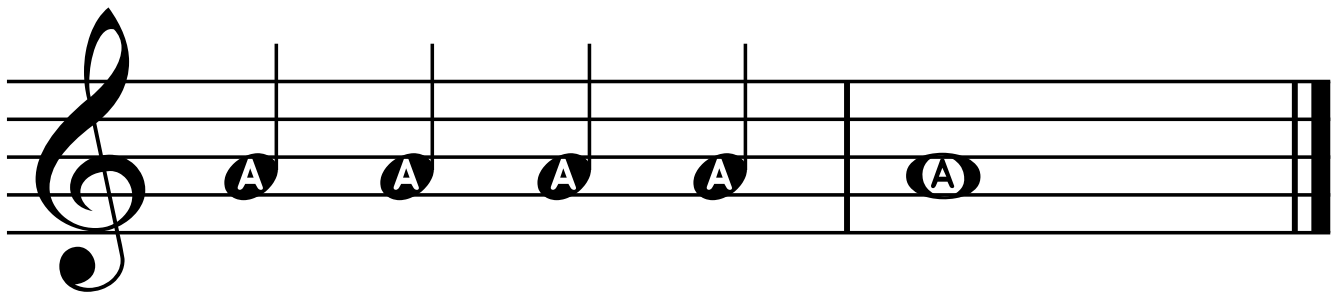
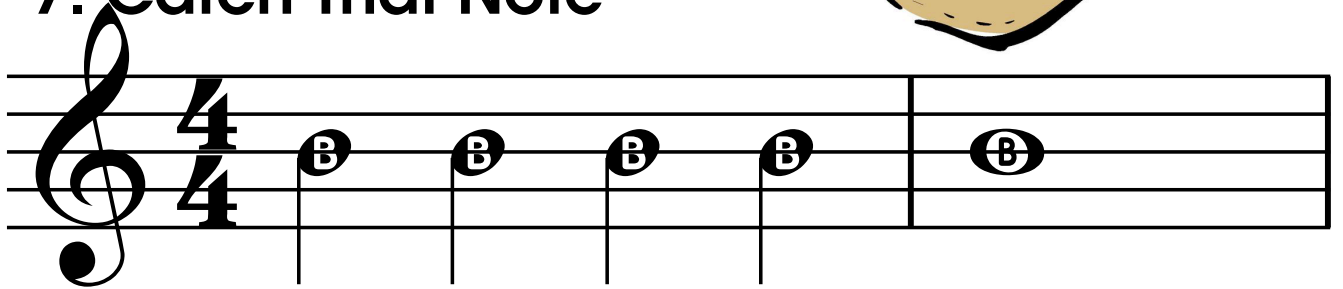


### 6. Skate Board Sam

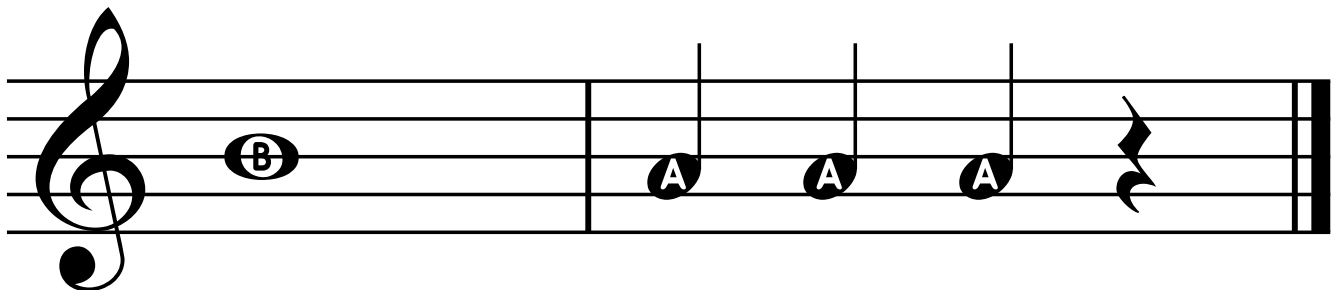
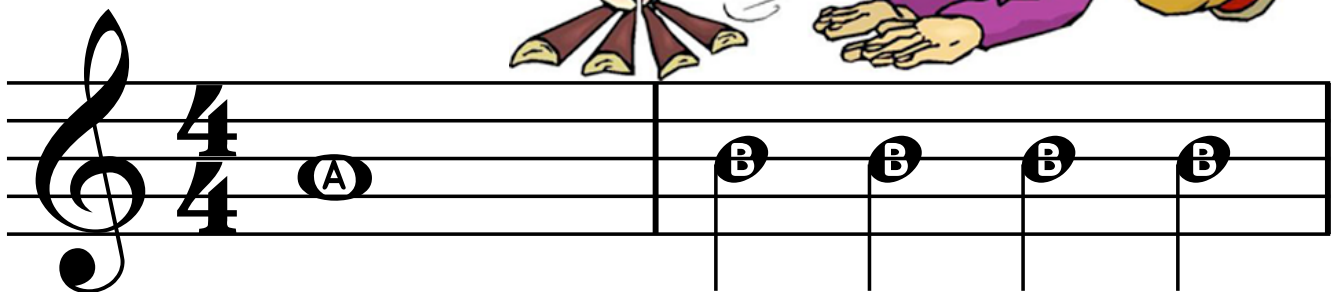




## 7. Catch That Note

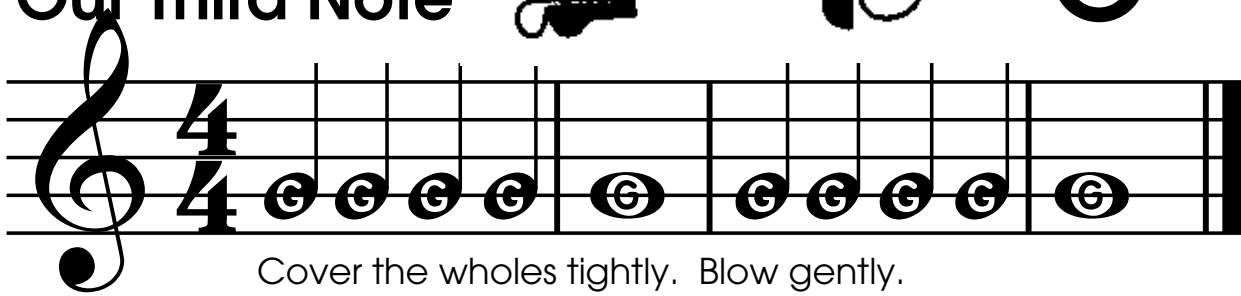


## 8. Keep On Blowin'



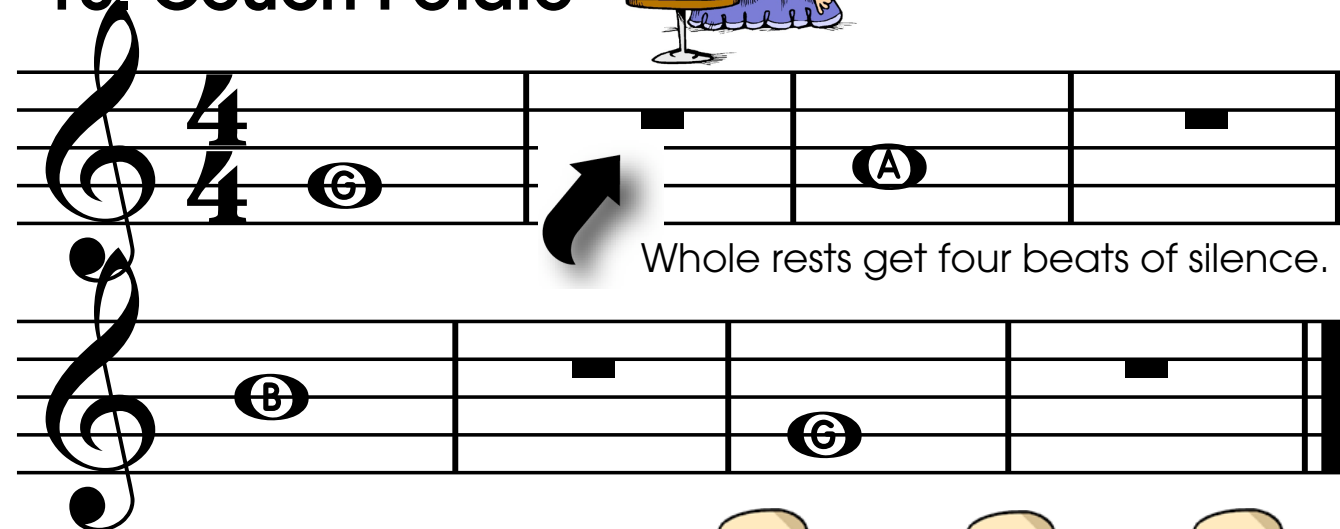
# 9. Our Third Note "G"<sup>7</sup>

NEW NOTE 



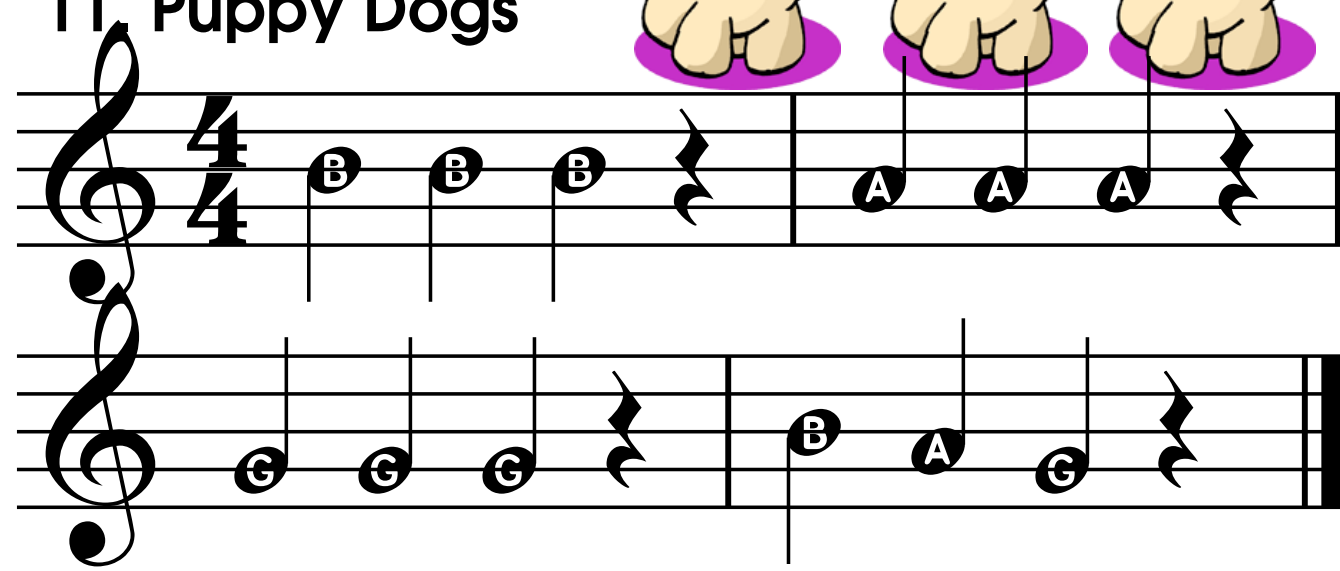
Cover the wholes tightly. Blow gently.

# 10. Couch Potato

Whole rests get four beats of silence.

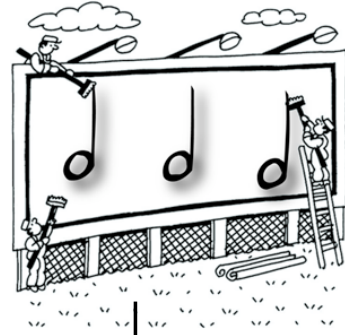
# 11. Puppy Dogs

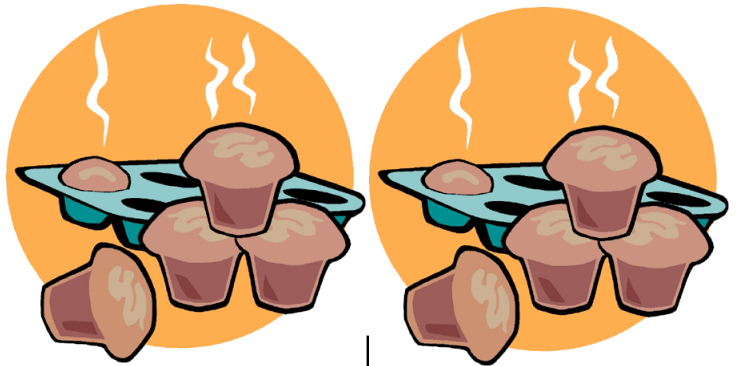
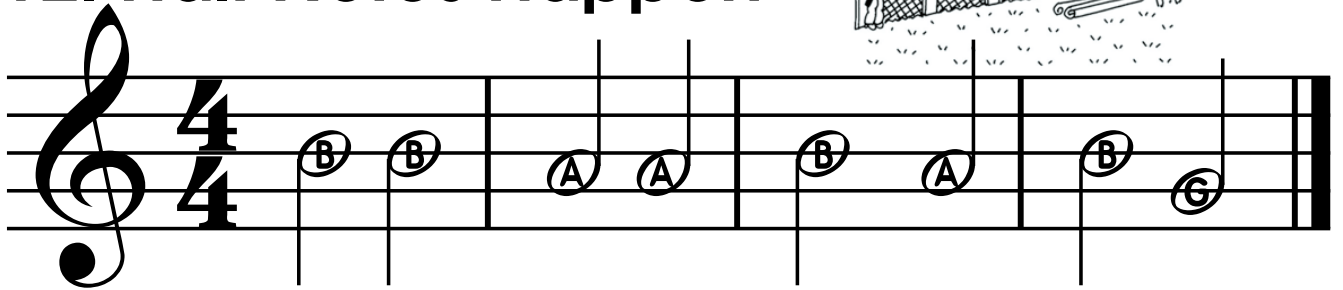


# Half Note

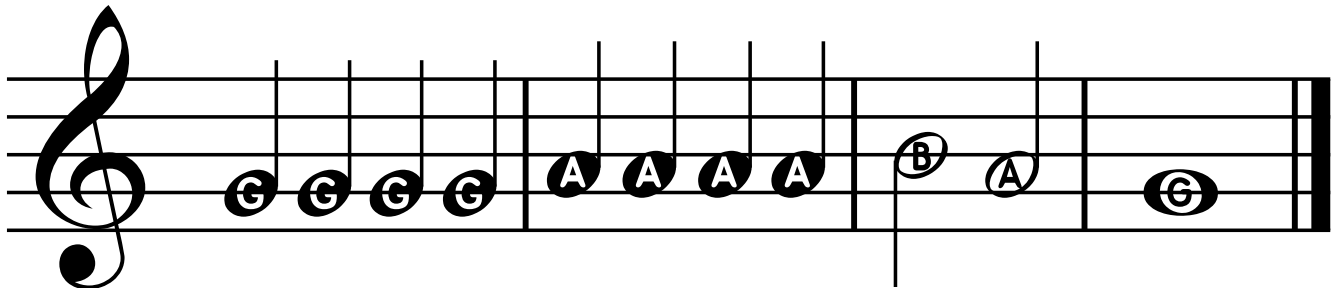
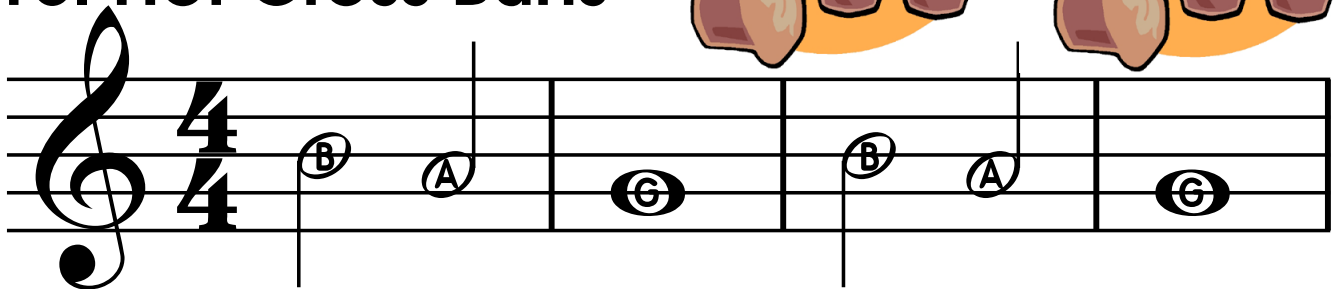
Two Beats of Sound



## 12. Half Notes Happen

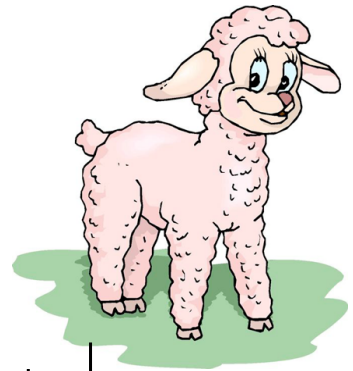


## 13. Hot Cross Buns





## 14. Mary Had a Little Lamb



Musical notation for "Mary Had a Little Lamb" in 4/4 time, featuring notes B, A, G, and A.

Staff 1: B A G A | B B B | A A A | B B B

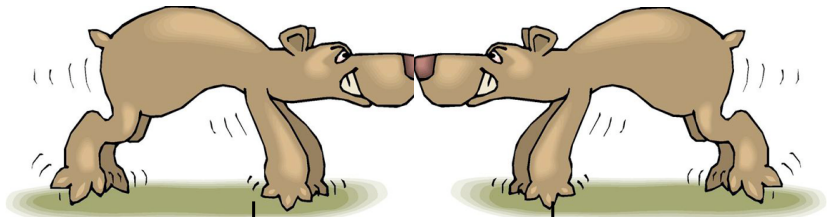
Staff 2: B A G A | B B B | A A B A | G



When you see this logo, follow the link for additional songs and exercises online.

[www.recorderfunbook/page9](http://www.recorderfunbook/page9)

## 15. Bad News Bears



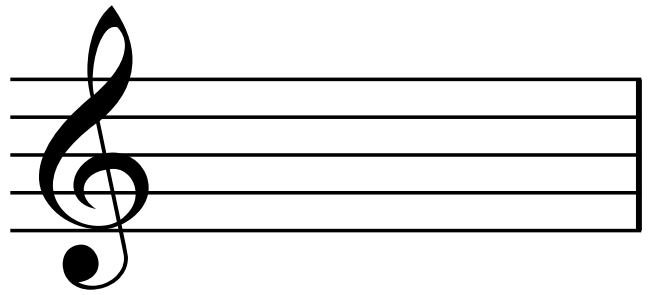
Musical notation for "Bad News Bears" in 4/4 time, featuring notes B, A, G, and A.

Staff 1: B A A | B A G | A B

Staff 2: A B A | B B B | A A G

10

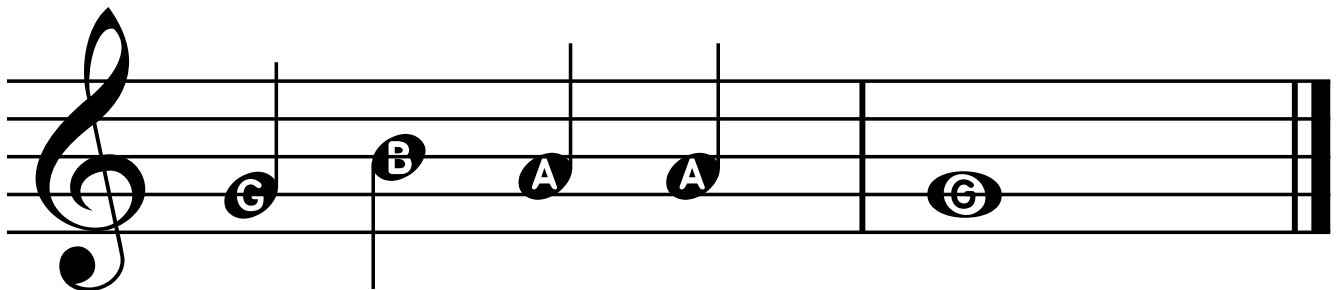
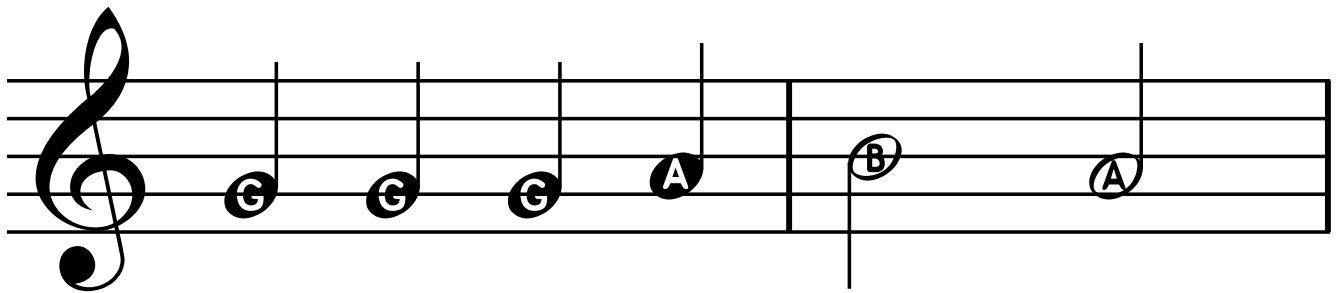
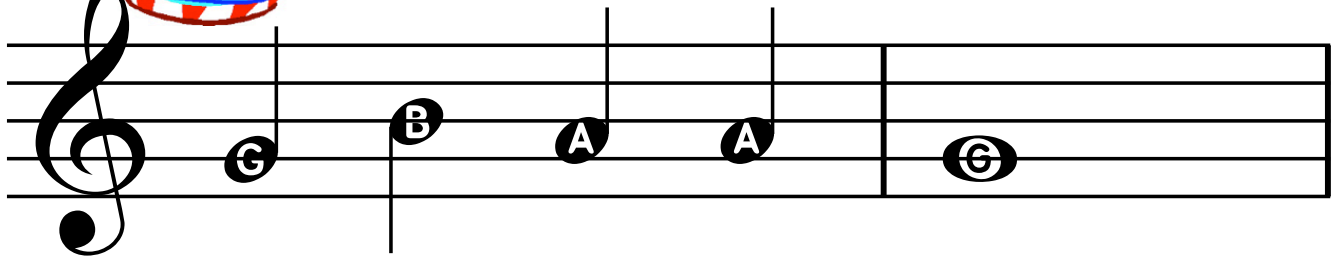
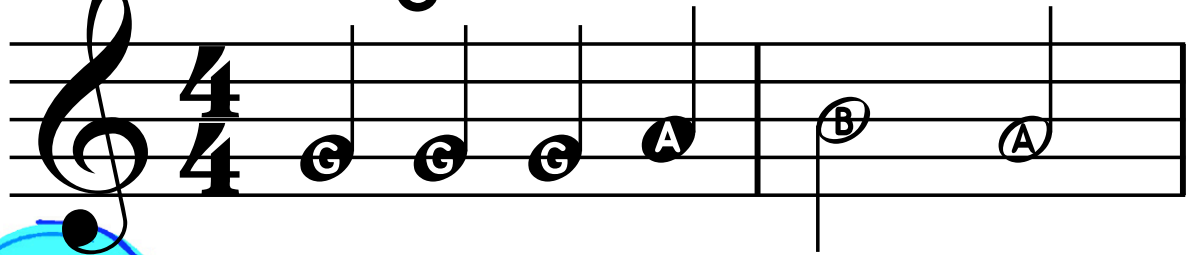
Notes are written on lines and spaces called the "staff".



How many lines can you find?  
How many spaces can you find?



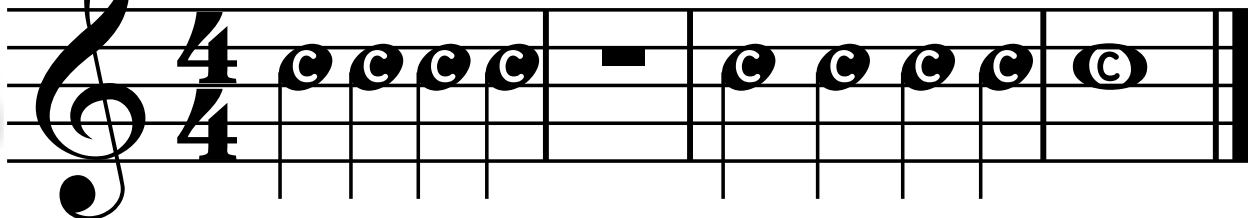
## 16. High Dive



# 17. Our Fourth Note



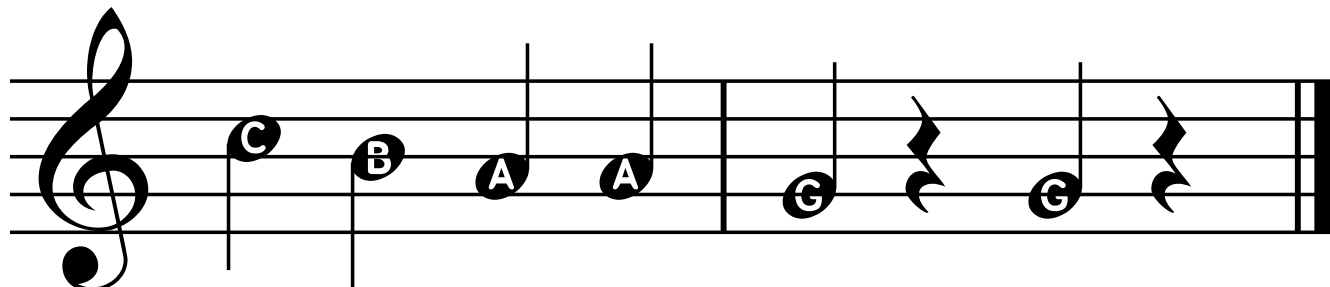
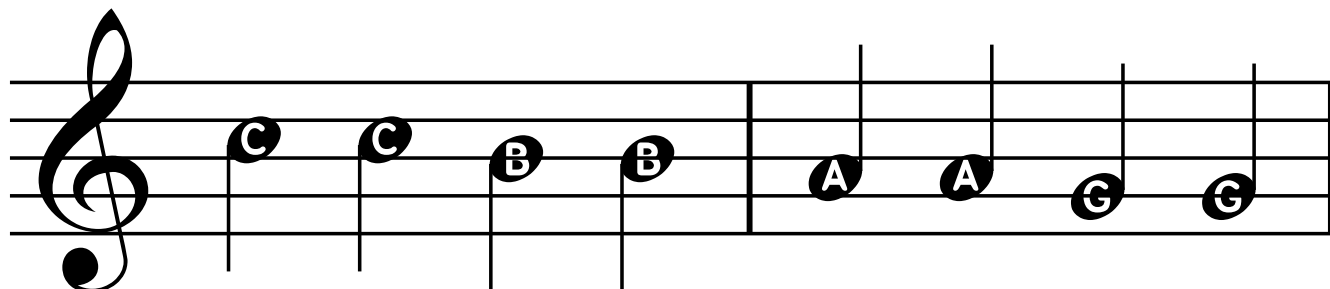
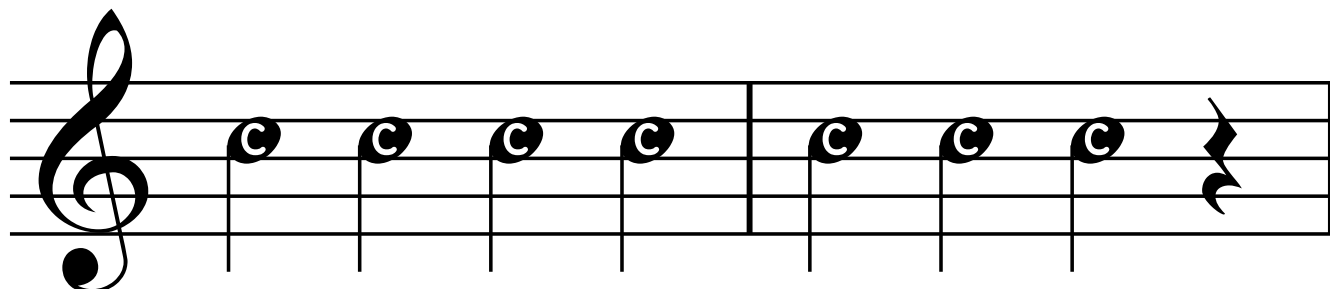
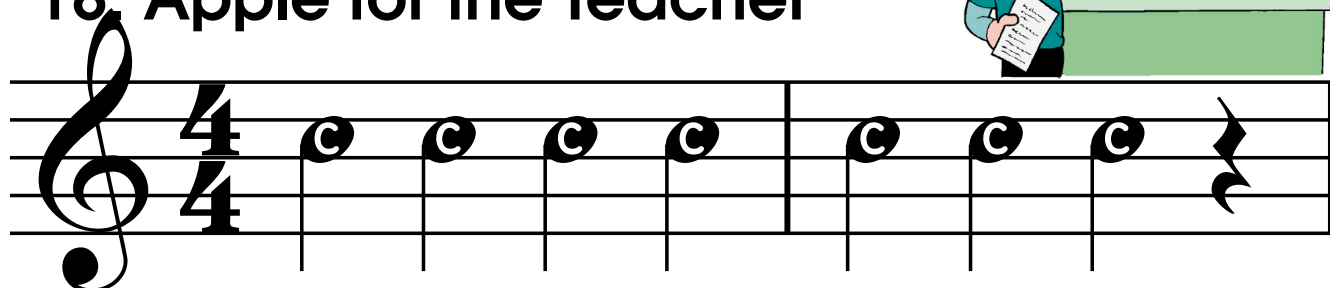
NEW NOTE



Keep a good posture. Back straight.  
Elbows off your side. Chin up.

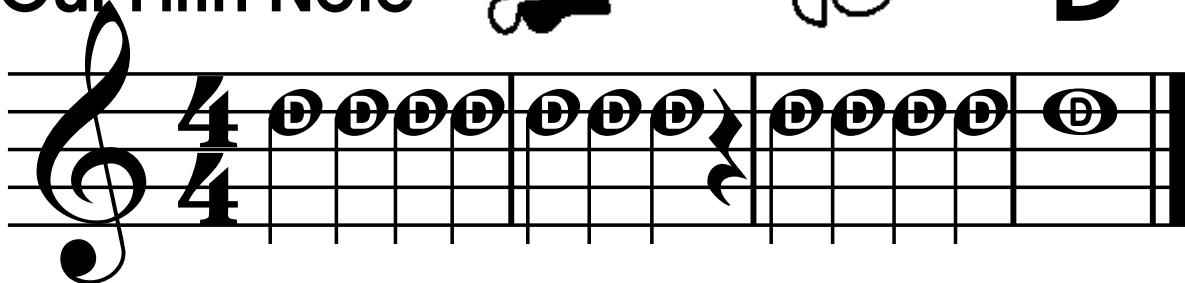


# 18. Apple for the Teacher



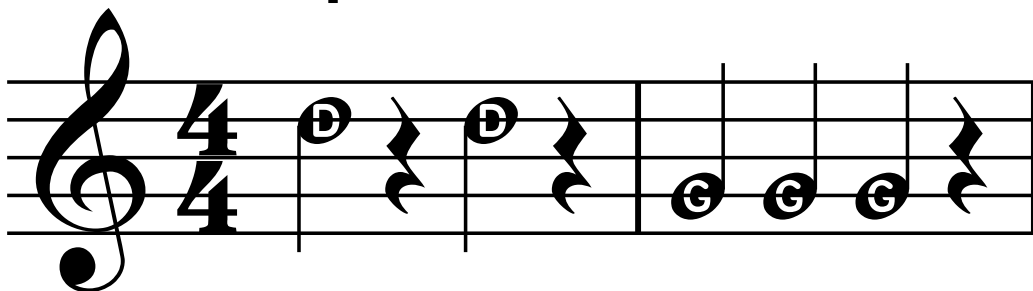
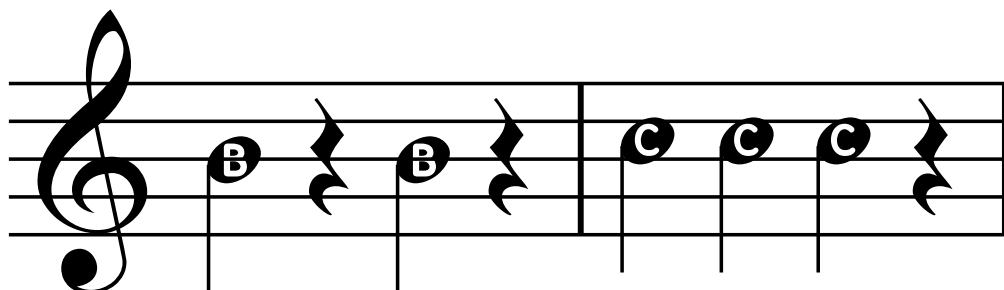
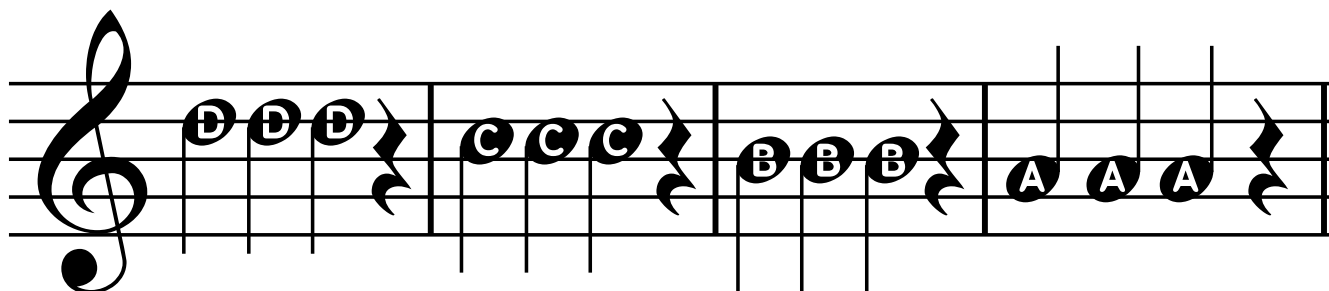
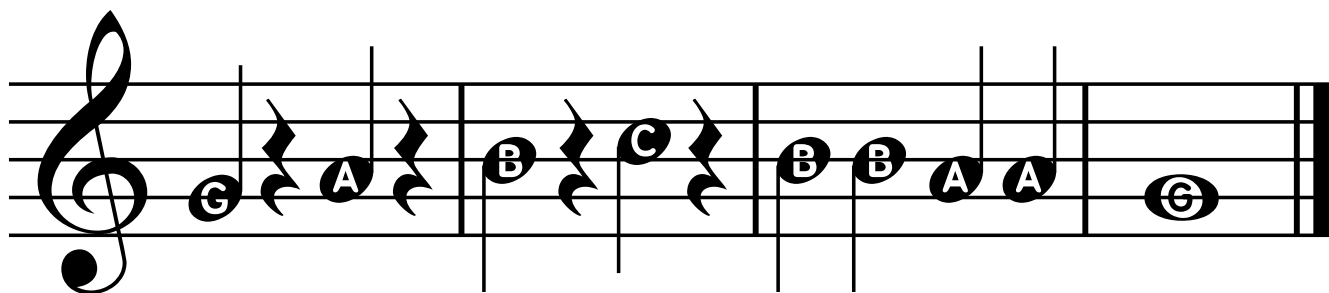
# 19. Our Fifth Note "D"

NEW NOTE 



Remember to whisper the word "too" as you blow.

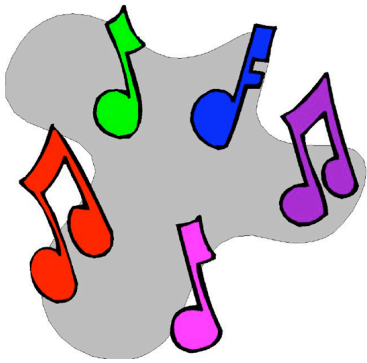
# 20. Bumper Cars



### 21. Dreydl, Dreydl

Musical notation for the song 'Dreydl, Dreydl'. It consists of two staves in 4/4 time. The first staff contains the melody with notes labeled D, B, D, B, D, B, D, B, C, B, A, A. The second staff contains the bass line with notes labeled C, A, C, A, C, A, D, C, B, A, G. The piece ends with a double bar line.



### 22. Notes Without Letters

Musical notation for 'Notes Without Letters'. It consists of three staves in 4/4 time. The first staff shows notes with letter labels: G, A, B, C. The second staff shows notes with letter labels: C, B, A, G. The third staff shows notes without letter labels, following the same sequence: C, B, A, G. The piece ends with a double bar line.

# Rhythm Fun



## Eighth Notes

One eighth note gets 1/2 count.  
Two eighth notes get ONE count.

**A**  $\frac{4}{4}$

**B**  $\frac{4}{4}$

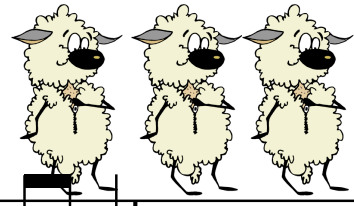
**C**  $\frac{4}{4}$

**D**  $\frac{4}{4}$

**E**  $\frac{4}{4}$

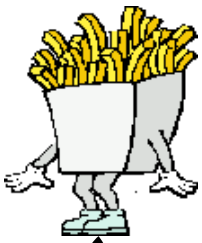


# 23. Mary's Little Cha Cha



Musical notation for "Mary's Little Cha Cha" in 4/4 time. The first staff includes lettered notes: B, A, G, G, A, B, B, B, B, B, A, A, A, A, A, B, B, B, B, B. The second staff shows the corresponding rhythmic notation with stems and beams.

# 24. French Fries



Musical notation for "French Fries" in 4/4 time. The first staff includes lettered notes: G, G, G, A, A, B, A, G, B, A, A, A, G. The second staff shows the corresponding rhythmic notation with stems and beams.

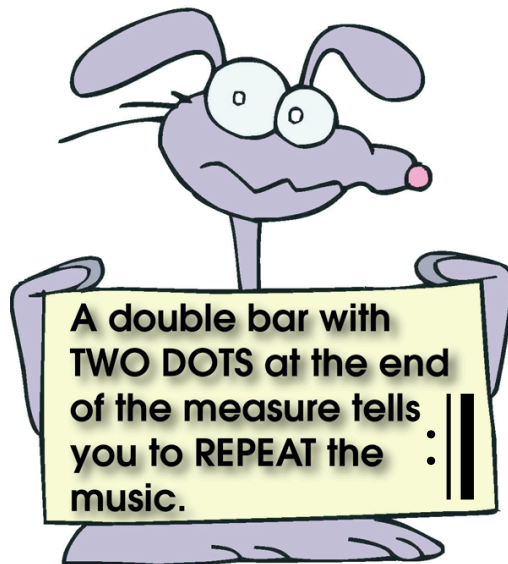
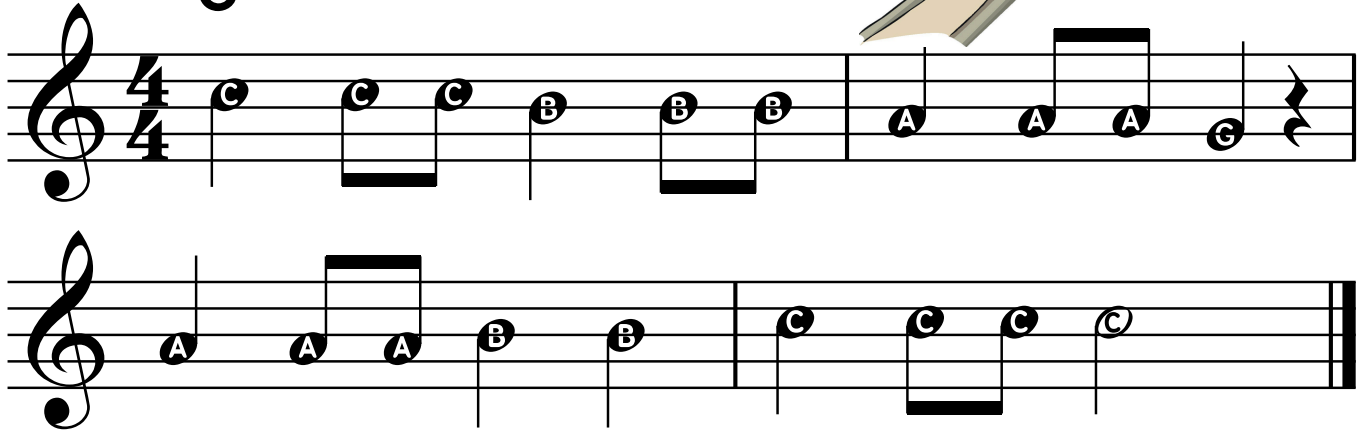
# 25. Country Hoe Down



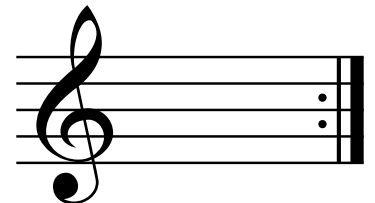
Musical notation for "Country Hoe Down" in 4/4 time. The first staff includes lettered notes: G, G, G, A, A, B, G, G, A, B, B, B, A, G, A, A. The second staff shows the corresponding rhythmic notation with stems and beams.



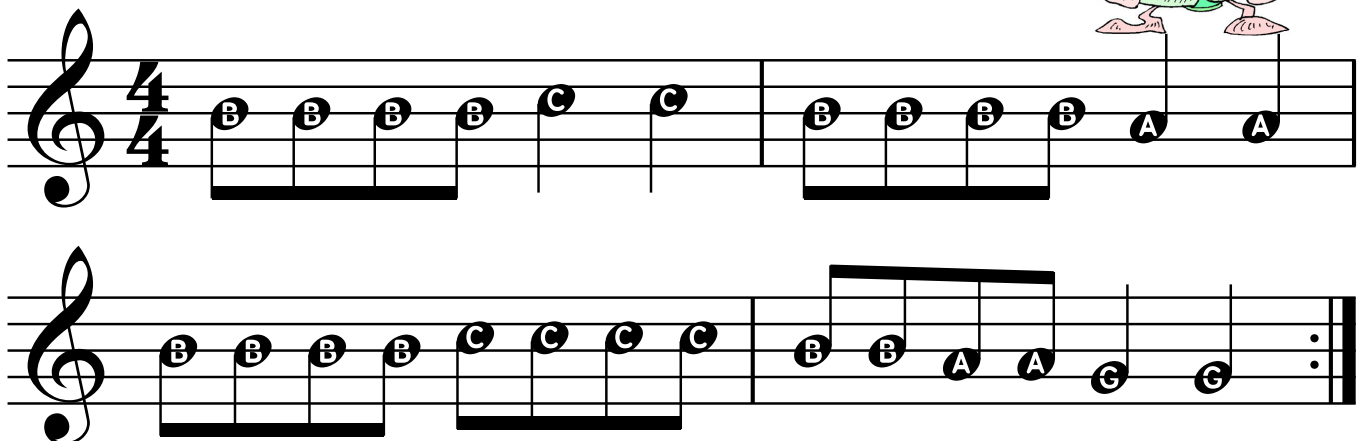
## 26. Eighth Note Slide



### Repeat Sign



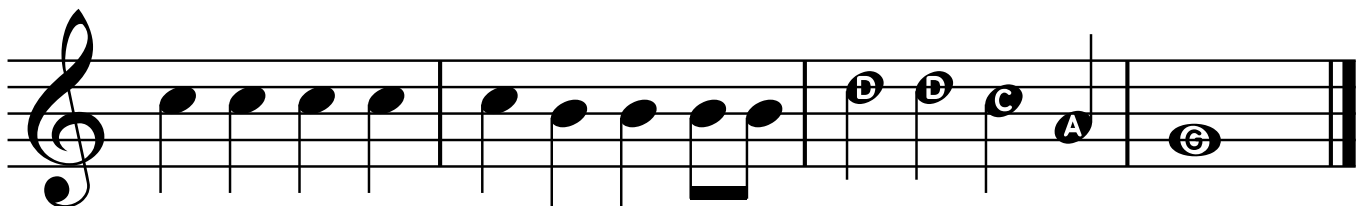
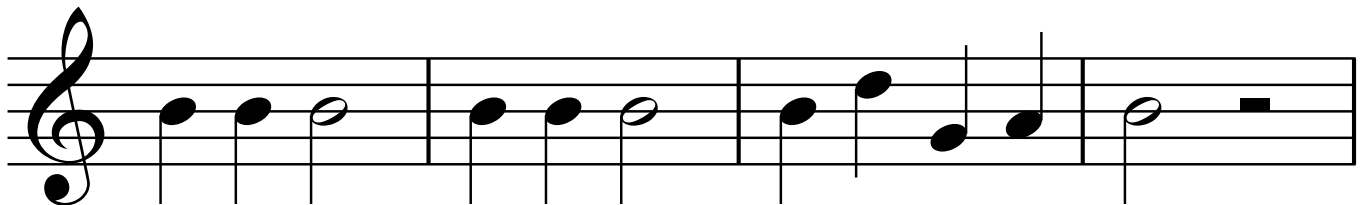
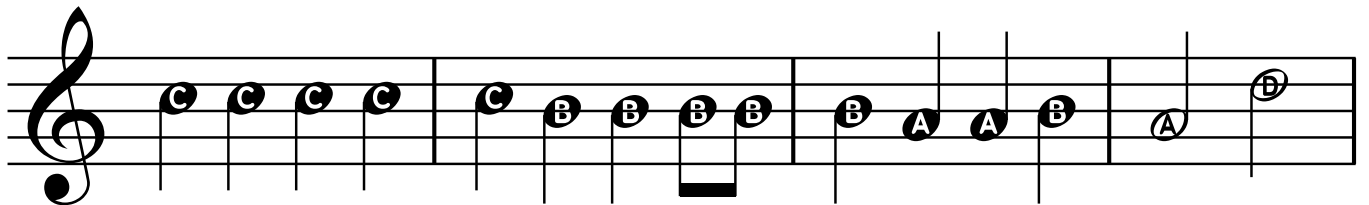
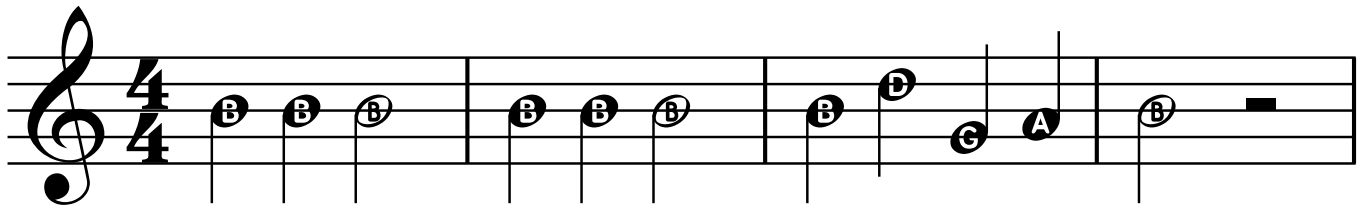
## 27. The Cabbage Song





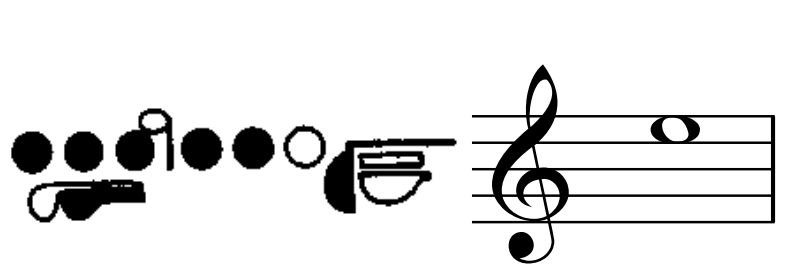


# 28. Jingle Bells

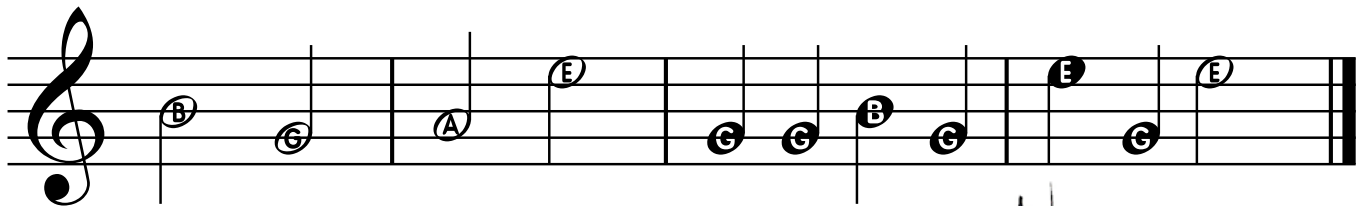
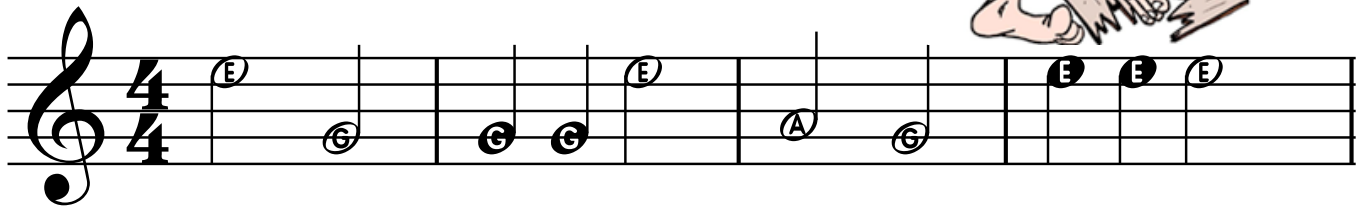




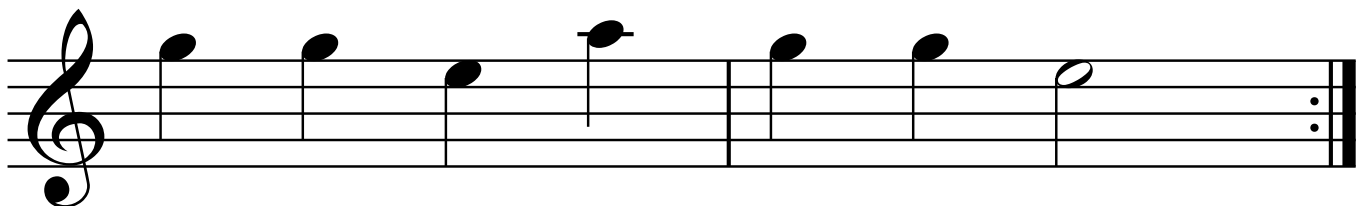
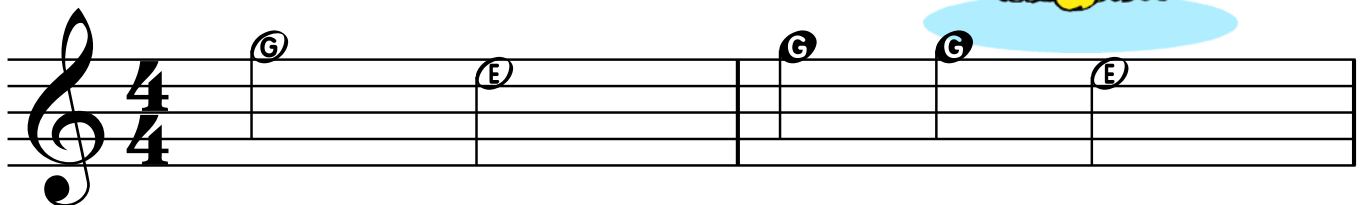
NEW NOTE  
"E"



### 29. The Karate Chop



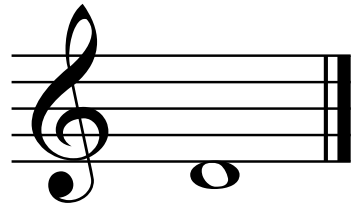
### 30. Rain, Rain, Go Away!



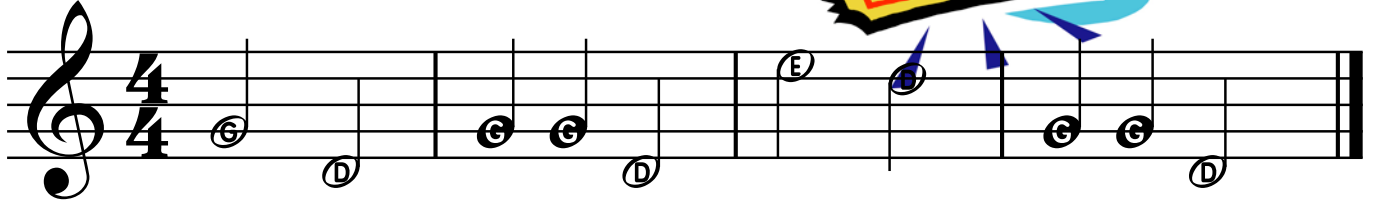


NEW NOTE

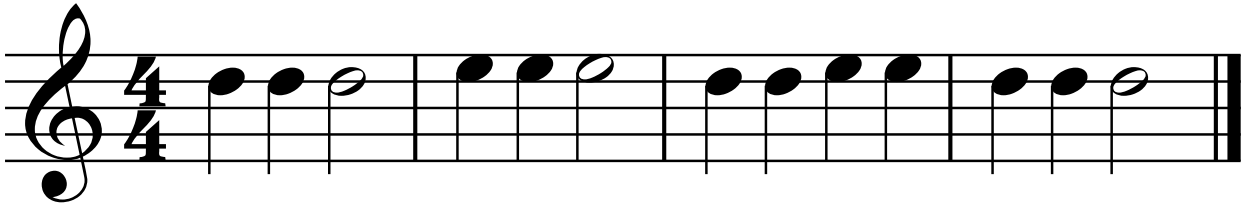
Low D''



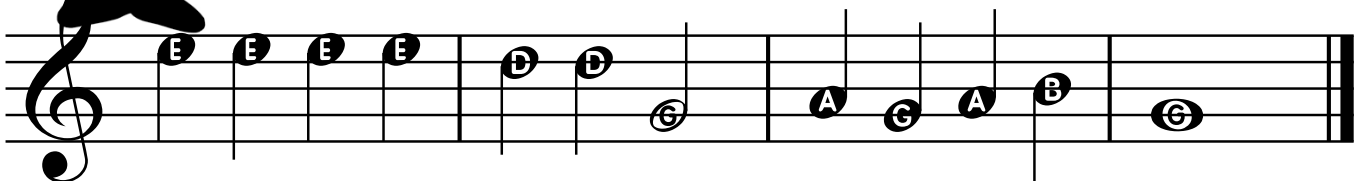
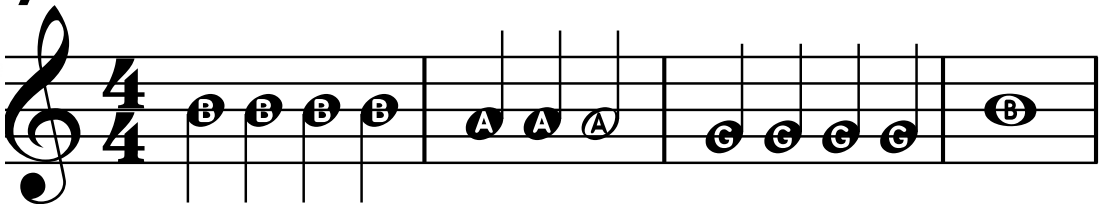
### 31. That's the Ticket



### 32. Slam Dunk

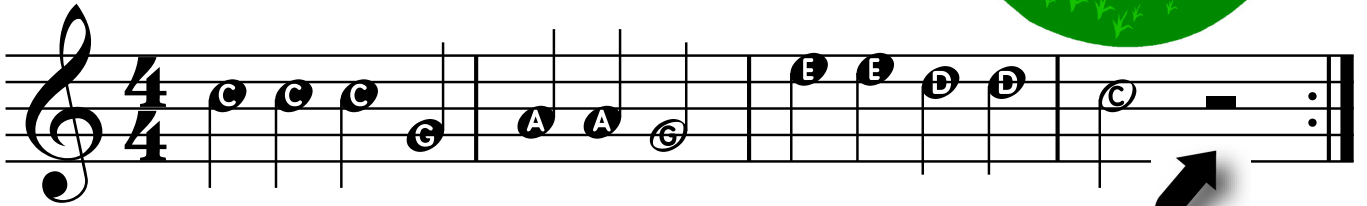
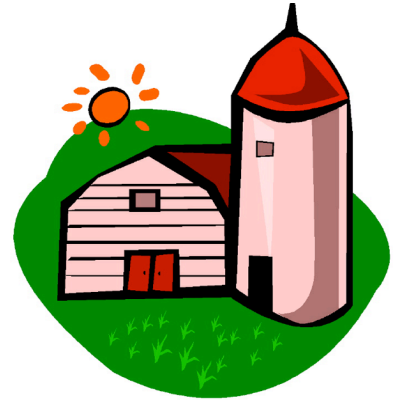


### 33. Jolly Old St. Nick

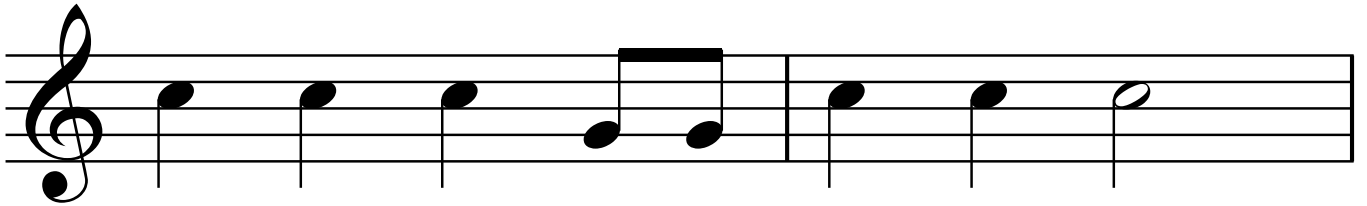




# 30. Old McDonald Had a Farm



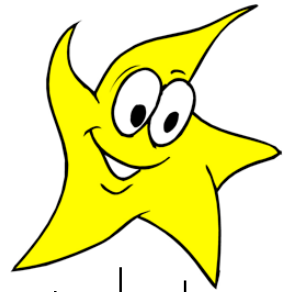
Half note rests get  
two beats of silence.





# D.C. al Fine

Go back to the beginning and play until "Fine".



## 37. Twinkle, Twinkle, Little Star

*Fine*  
*D. C. al Fine*



# D.S. al Fine

Go back to the sign and play until "Fine".

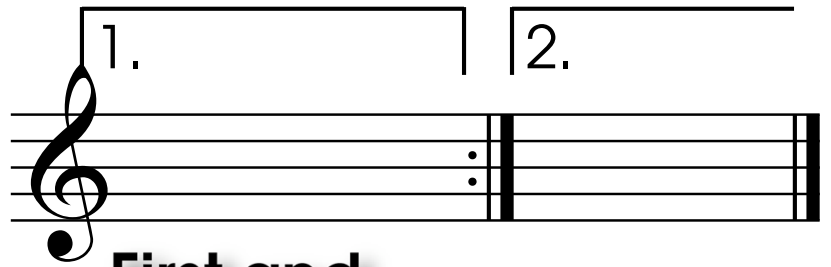


The "sign"



## 38. Ode to Joy

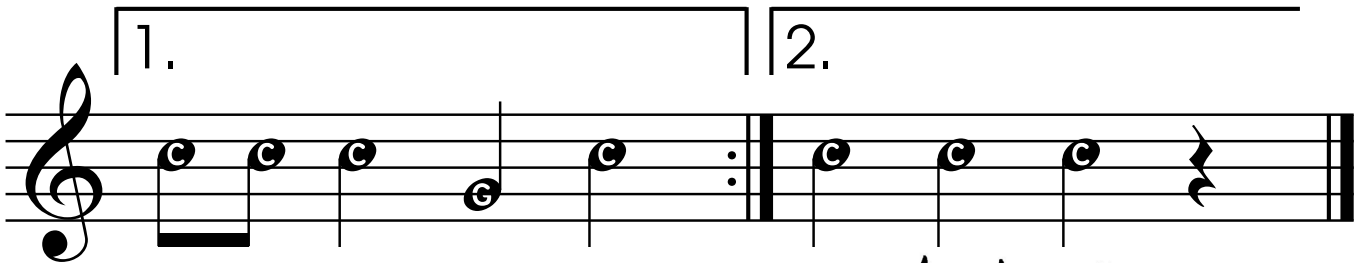
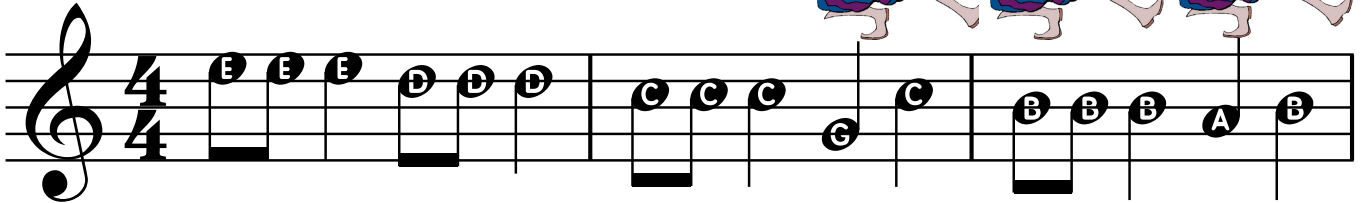
*Fine*  
*D.S. al Fine*



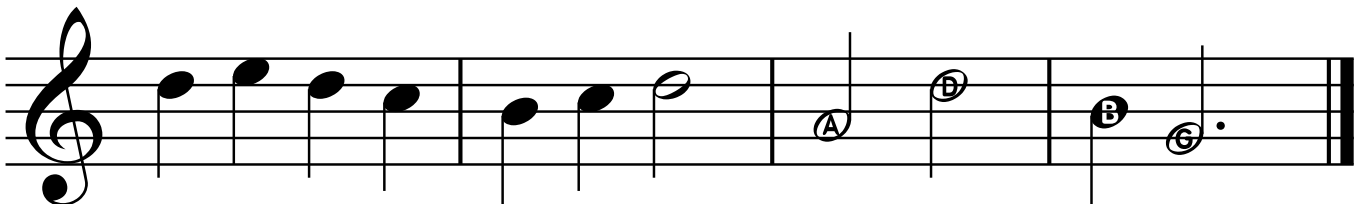
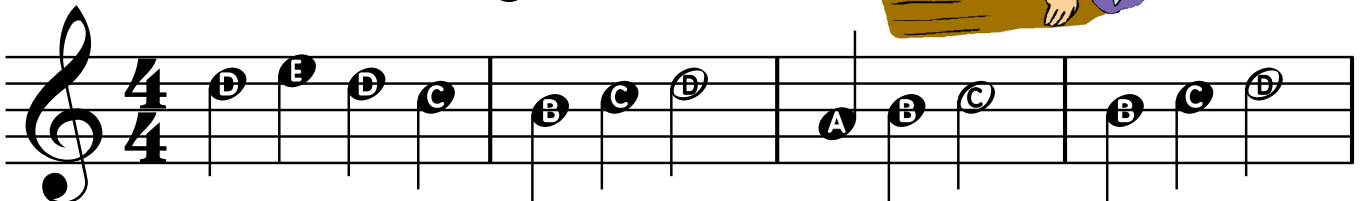
## First and Second Endings

When you reach the repeat sign under the first ending, stop and go back to the beginning. When you get to the first ending again, skip it and go to the second ending.

### 31. Stodola Pumpa



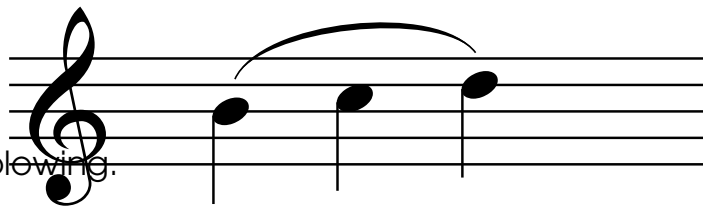
### 32. London Bridge





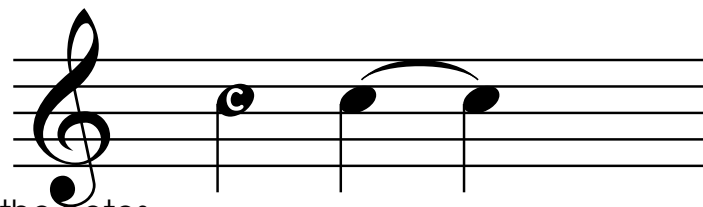
# Slur

A "slur" is a curved line that connects two or more notes of different pitches. Tongue the first note and move to the next notes without tonguing. Don't stop blowing.



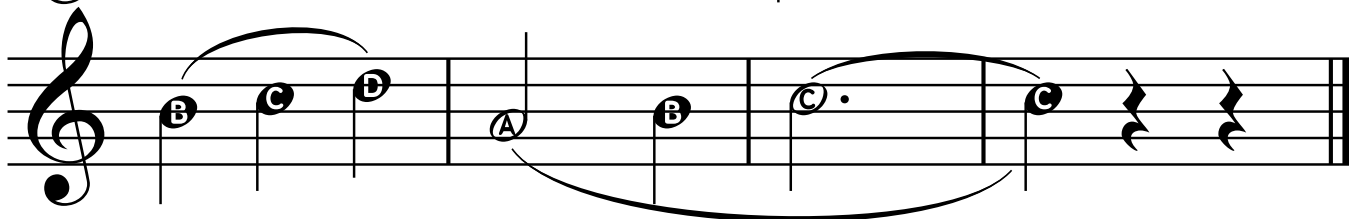
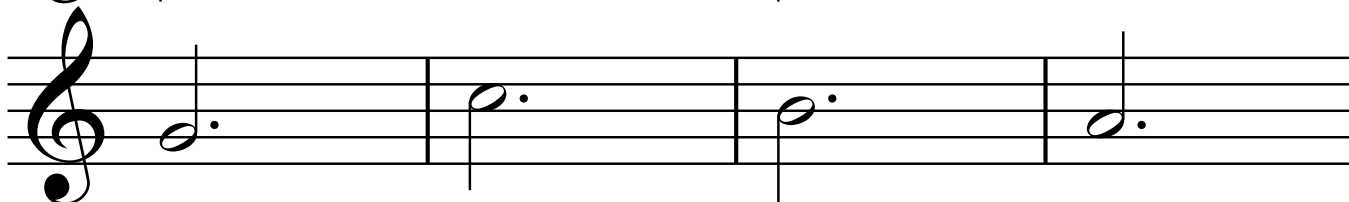
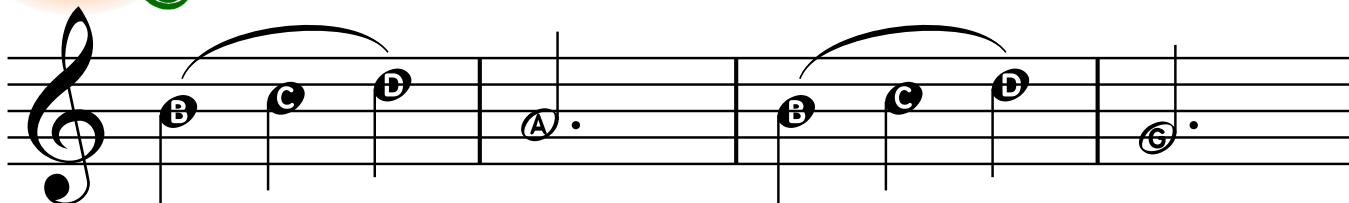
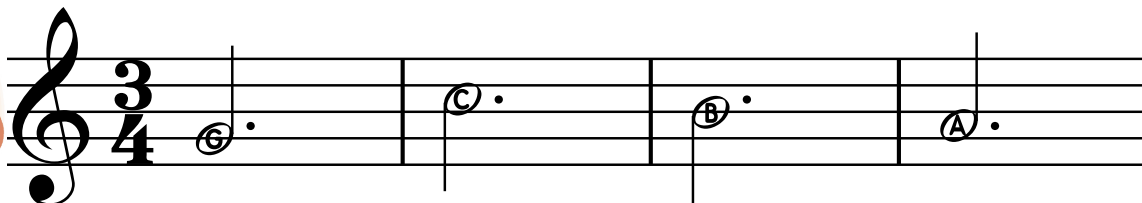
# Tie

A "tie" is a curved line that connects two or more notes of the same pitch. Hold the note for the combined value of the notes.



[www.recorderfunbook.com/page23](http://www.recorderfunbook.com/page23)

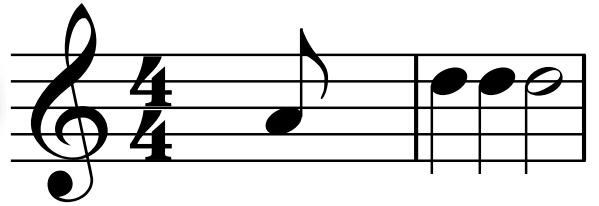
## 33. Southern Roses





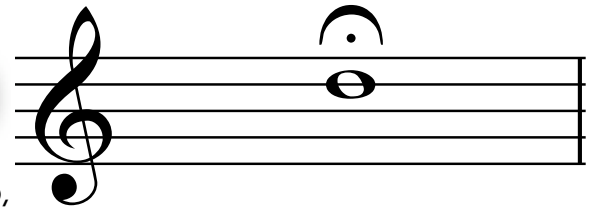
## Pick-Up Notes

Note(s) that come before the first full measure of a piece of music.

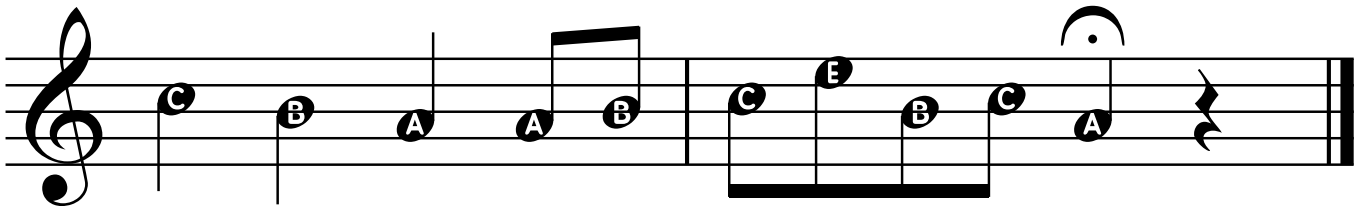
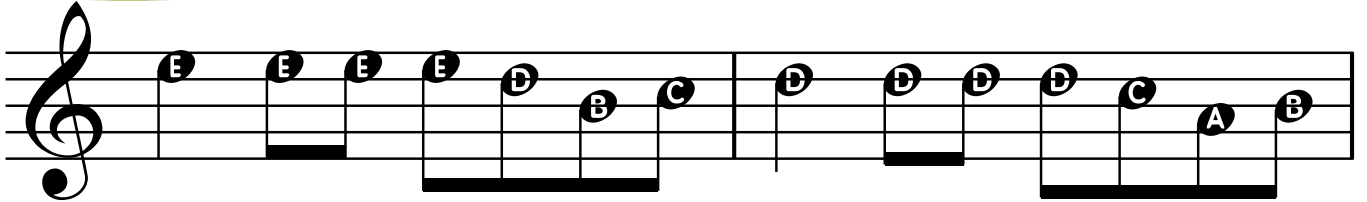
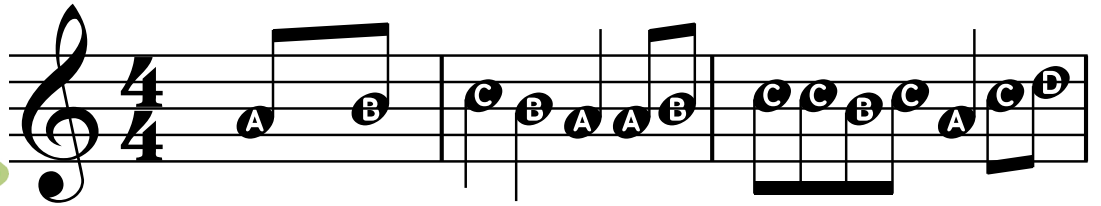


## Fermata (Hold)

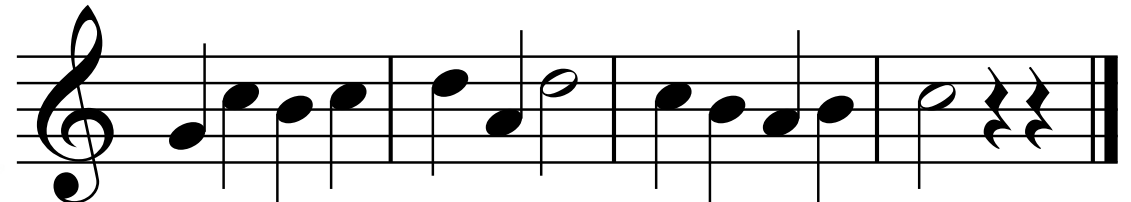
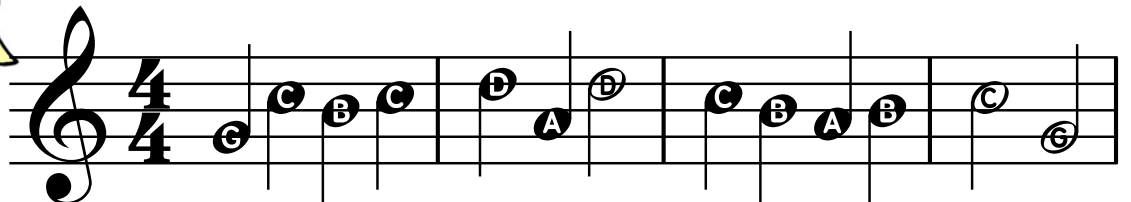
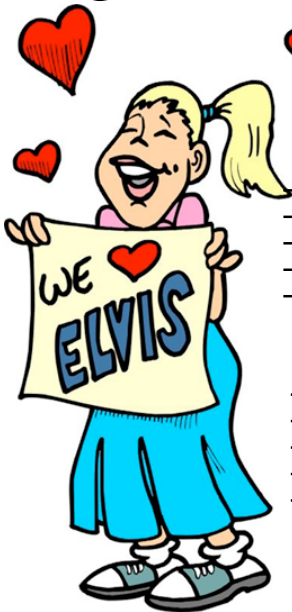
Hold (keep blowing) the note until your director tells you to stop,



## 34. Snake Charmer



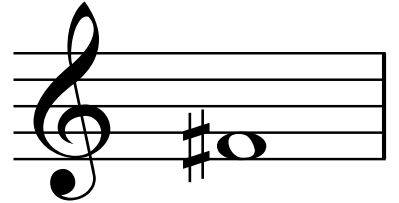
## 35. Aura Lee



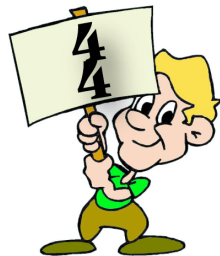
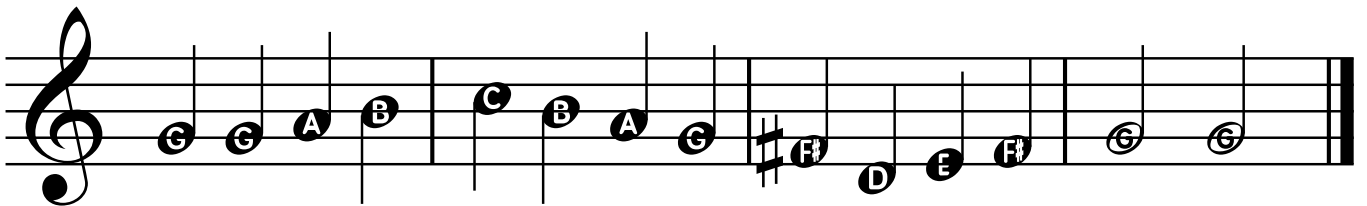
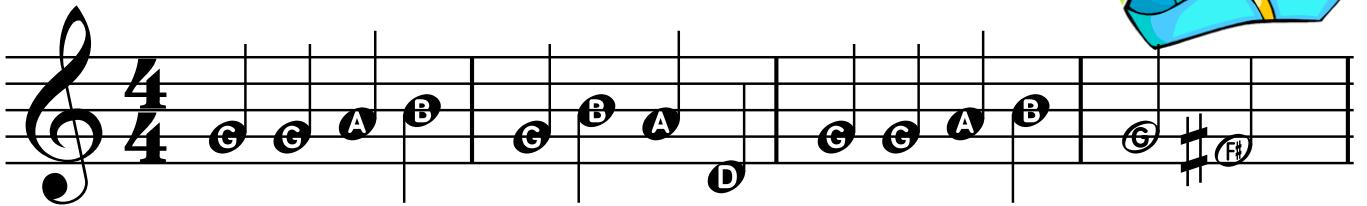




NEW NOTE  
"F #"



### 39. Yankee Doodle

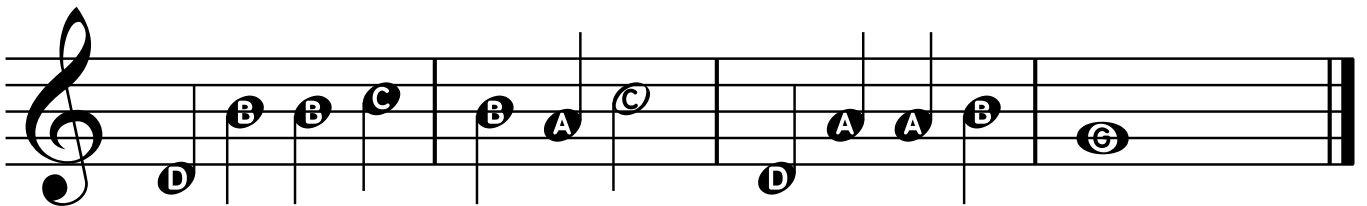
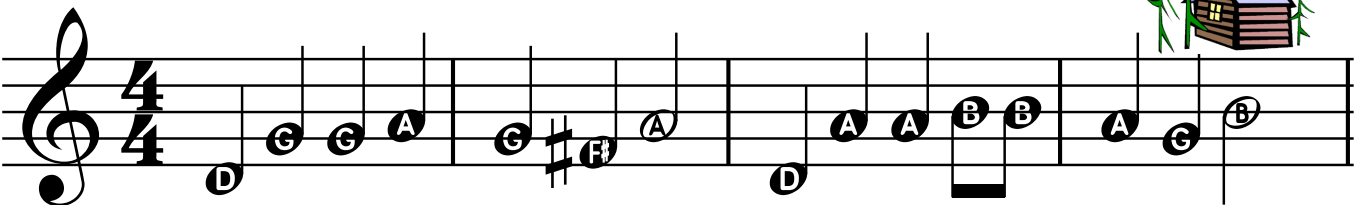


# 4/4

### Time Signature

A "time signature" tells you how many beats there are in each measure of music.

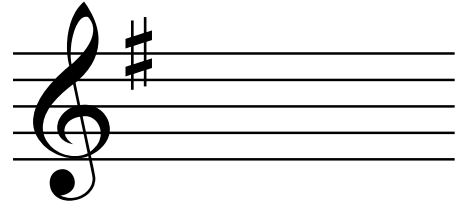
### 40. Little Cabin in the Wood





## Key Signature

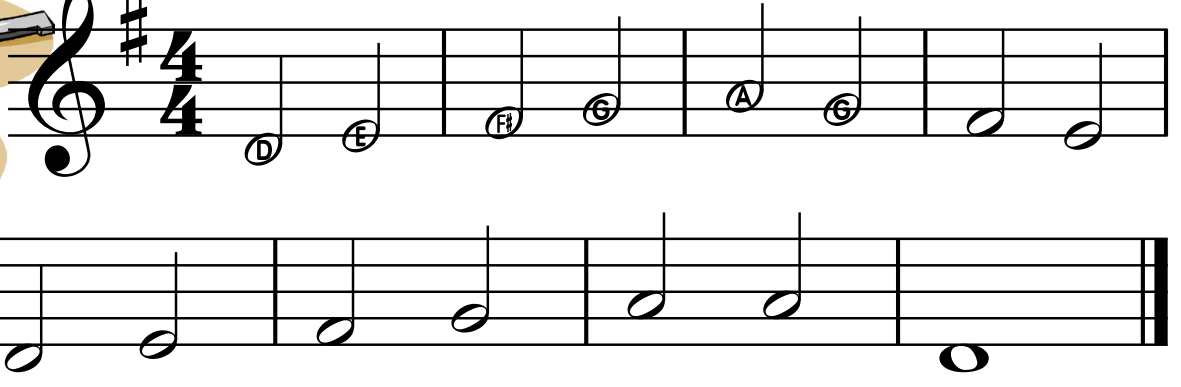
A "key signature" changes certain notes throughout a piece of music.



When you see this key signature, play all the Fs as F SHARP.

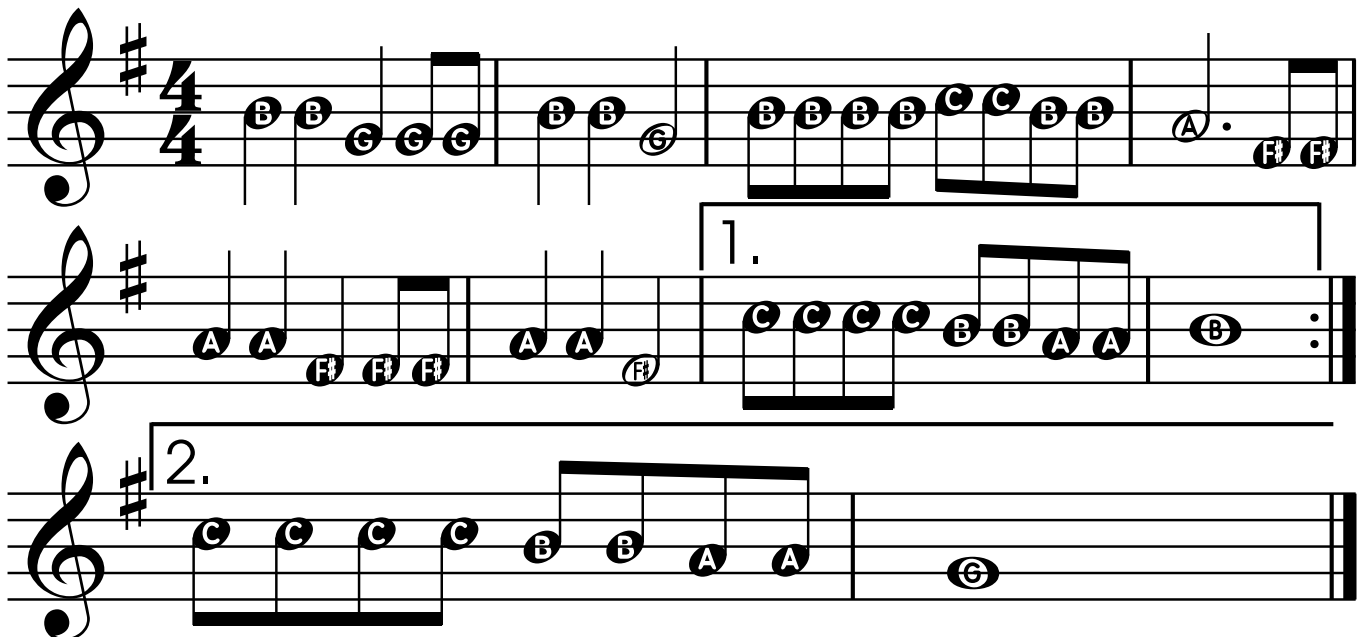


### 41. It's a Ringer!

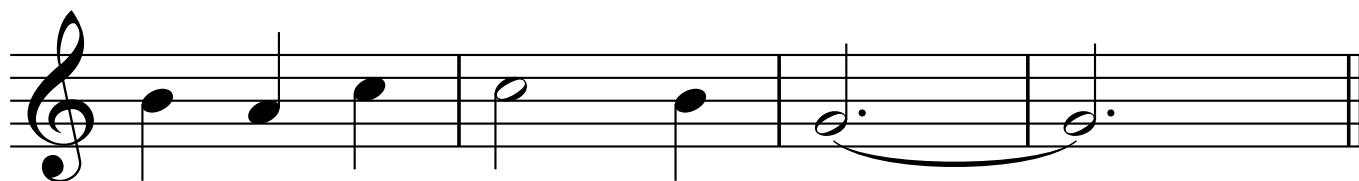
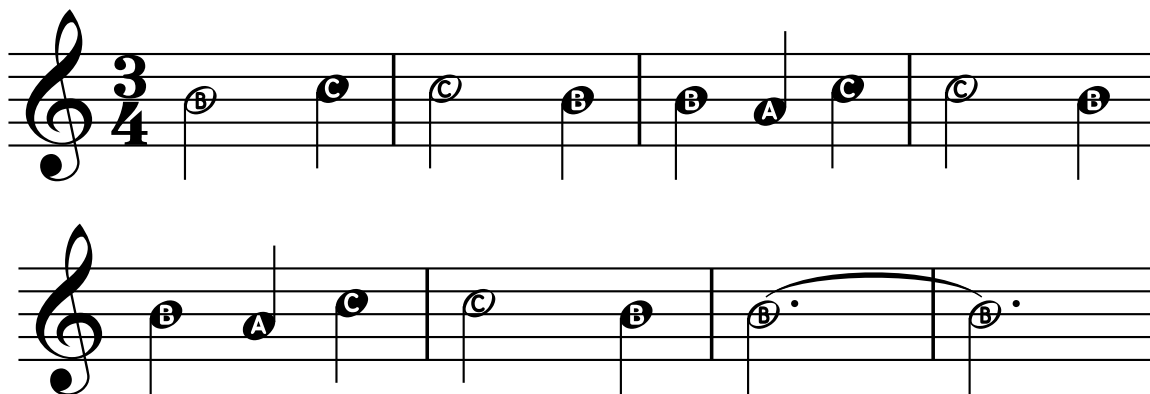


[www.recorderfunbook.com/page26](http://www.recorderfunbook.com/page26)

### 42. Polly Wolly Doodle



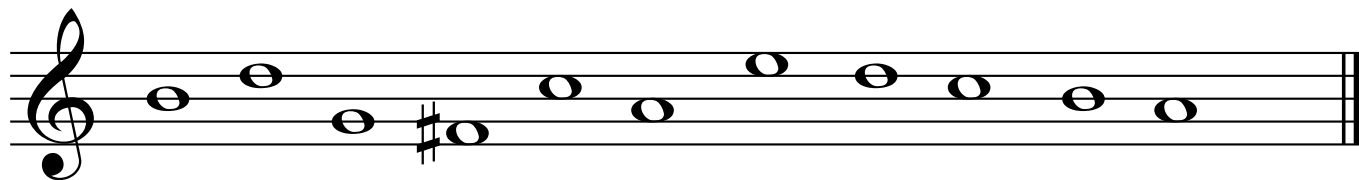
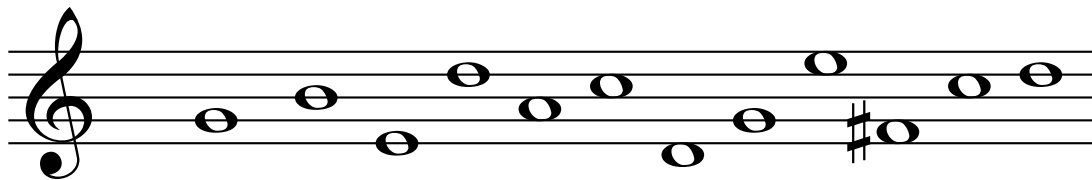
## 43. Barcarolle



[www.recorderfunbook.com/page27](http://www.recorderfunbook.com/page27)

## Fun Work

Write in the letters to these notes.



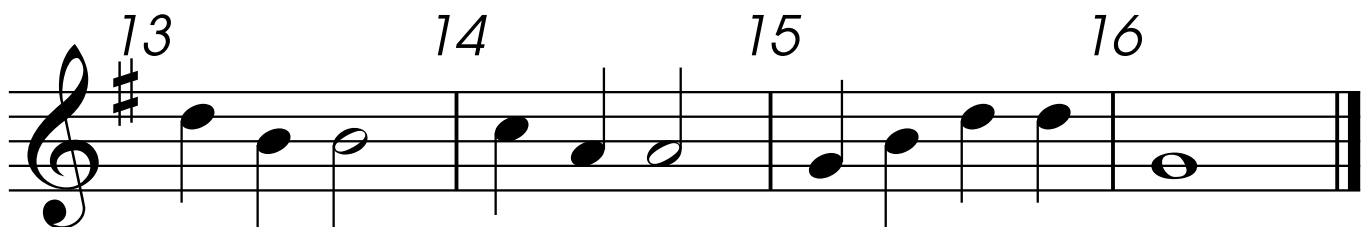
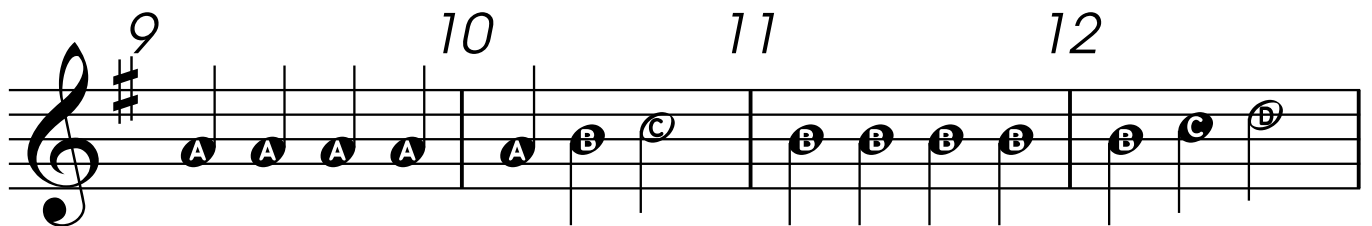
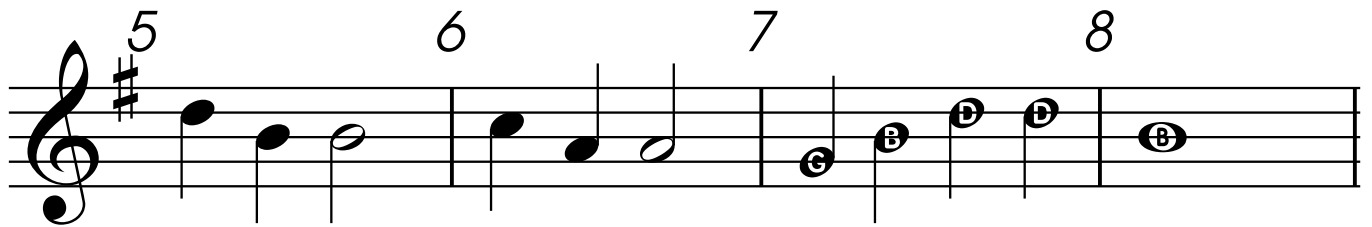
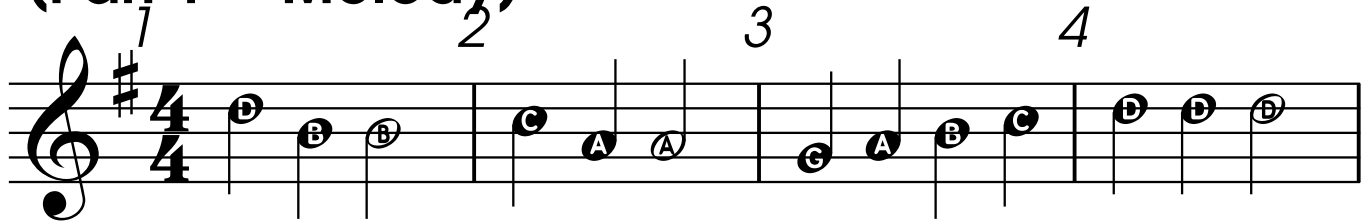


# Duet

Two performers or singers who play together.



## 44. Lightly Row (Part 1 - Melody)





45. Lightly Row  
(Part 2 - Harmony)

1 2 3 4

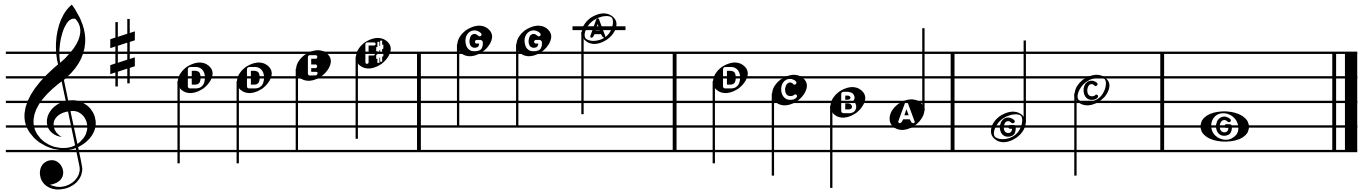
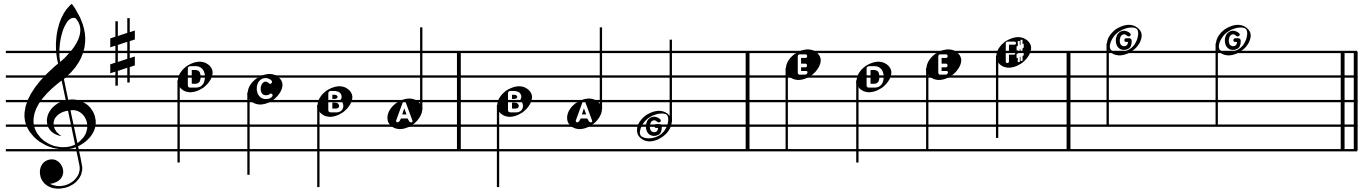
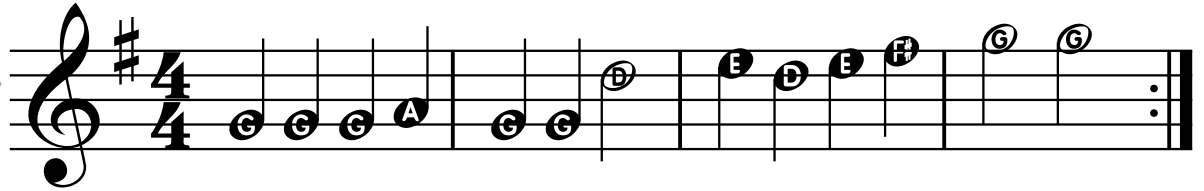
5 6 7 8

9 10 11 12

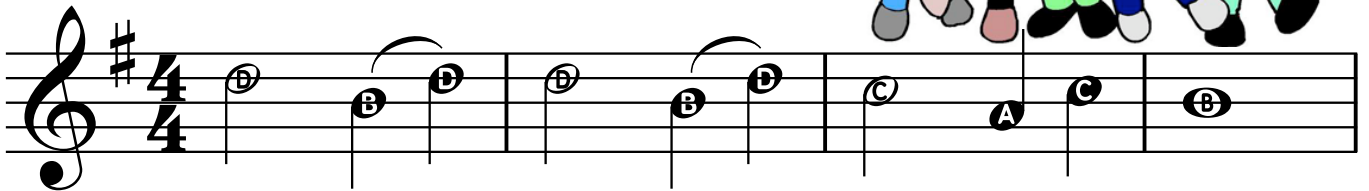
13 14 15 16



## 46. Good King Wenceslas



## 47. O Come Little Children





# Round

Playing the same music beginning at different times.

## 48. Are You Sleeping?

a Four Part Round



# Dynamics

*p*

**Piano**

Play with a soft volume.

*f*

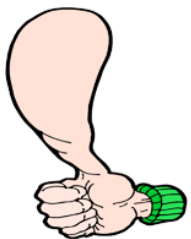
**Forte**

Play with a full volume.

## 49. Minka Minka



## 50. The Thumb Slide



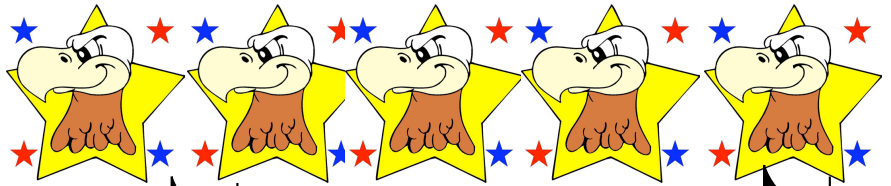


# Dotted Quarter Note

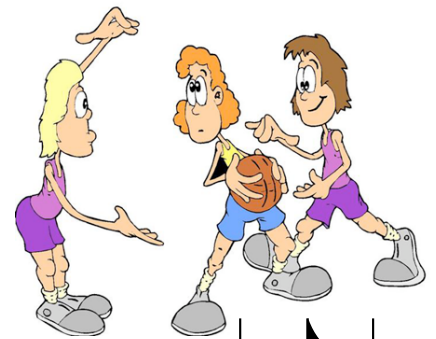
A dotted quarter note gets one and one half counts.



## 51. America



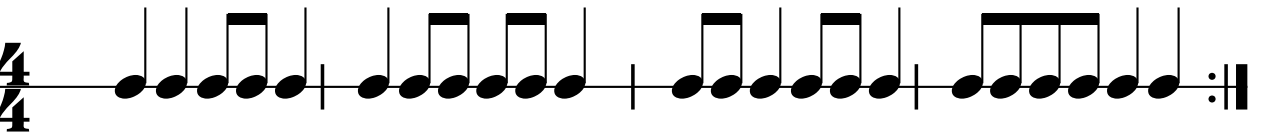

[www.recorderfunbook.com/page32](http://www.recorderfunbook.com/page32)



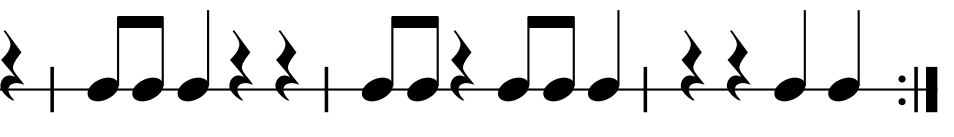
## 52. Technical Foul

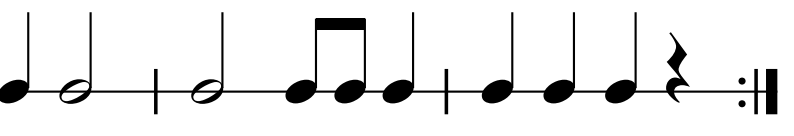


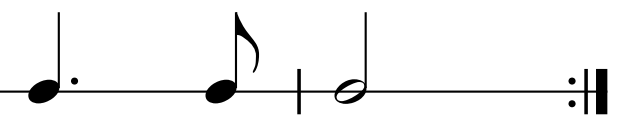
# Rhythm Fun

**A**  $\frac{4}{4}$  

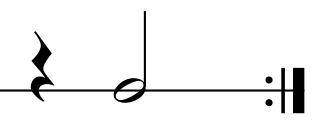
**B**  $\frac{4}{4}$  

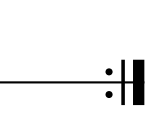
**C**  $\frac{4}{4}$  

**D**  $\frac{4}{4}$  

**E**  $\frac{2}{4}$  

**F**  $\frac{3}{4}$  

**G**  $\frac{3}{4}$  

**H**  $\frac{3}{4}$  



## 53. Rhythm Wreck



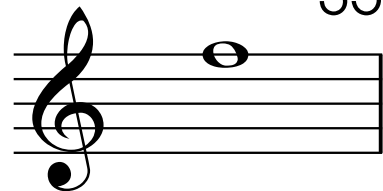

Find time at home to practice.  
Play for your parents and friends.  
Perform "mini concerts".  
Have fun with the recorder!



## 54. More Hot Cross Buns

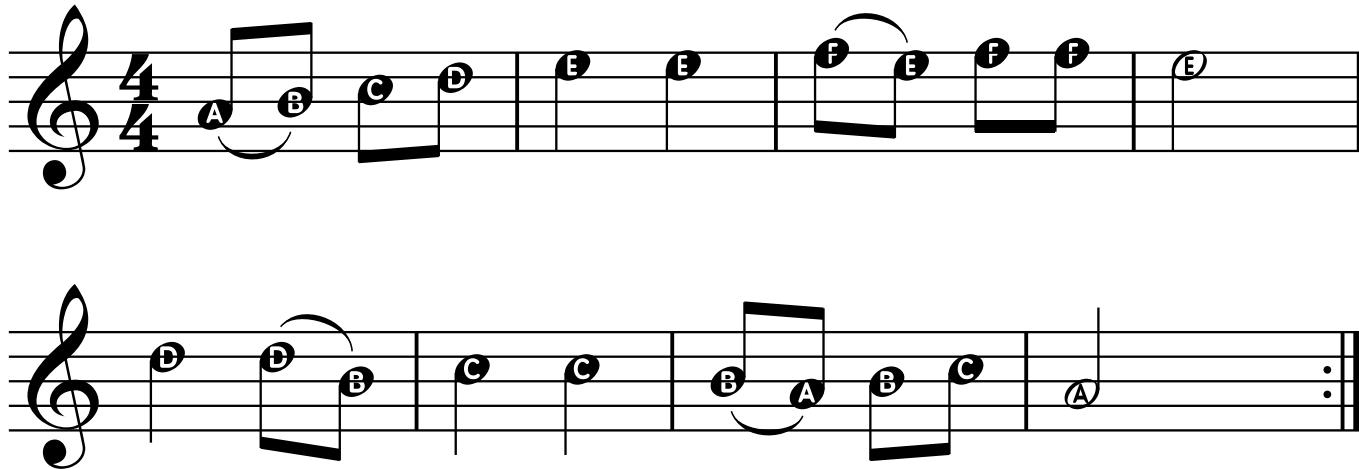


NEW NOTE



# "High F"

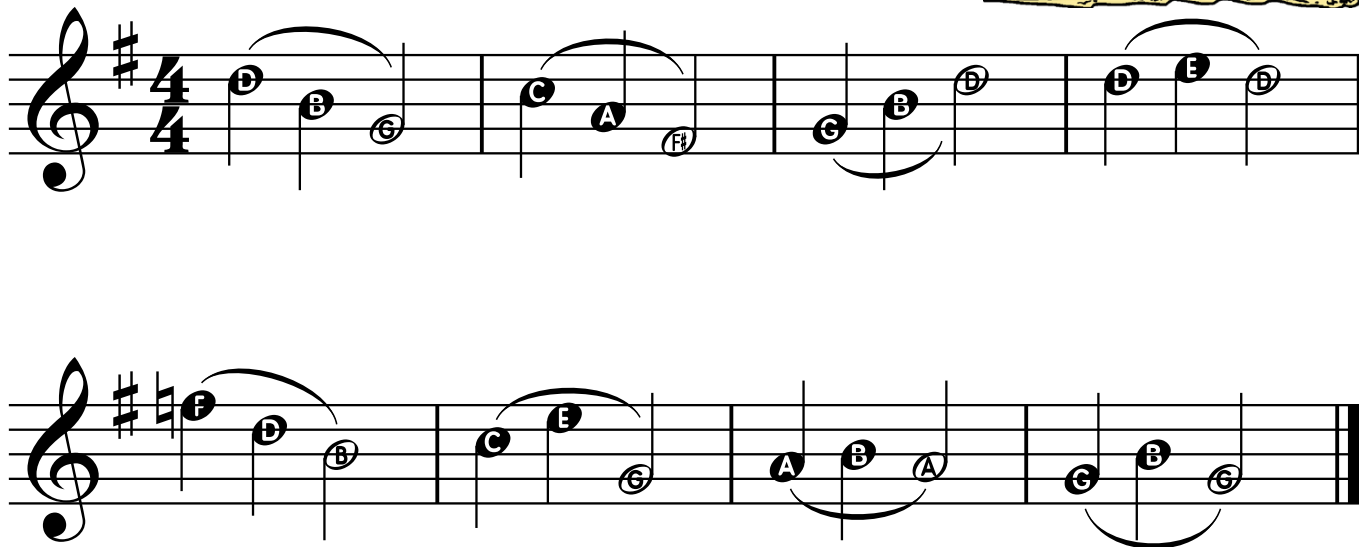
## 55. Hatikvah



[www.recorderfunbook.com/page35](http://www.recorderfunbook.com/page35)



## 56. Slippery Slurs



36



### 57. Bach Minuet

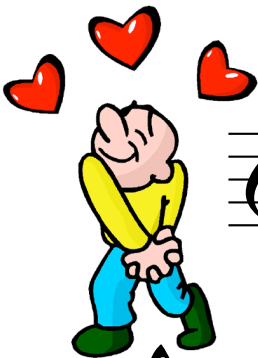
Musical notation for Bach Minuet, measures 1-8. The first staff shows measures 1-4 with notes A, B, A, F. The second staff shows measures 5-8 with notes B, A, B, and a first/second ending section.

### 58. Rueben and Rachel



Musical notation for Rueben and Rachel, measures 1-8. The first staff shows measures 1-4 with notes E, C, B, B and dynamics *f* and *p*. The second staff shows measures 5-8 with notes E, E, F, B, C, C, B, B and dynamics *f* and accents.

### 59. When Love Is Kind



Musical notation for When Love Is Kind, measures 1-8. The first staff shows measures 1-4 with notes A, B, A, B. The second staff shows measures 5-8 with notes C, B, C, D.



# Dynamics

*mp*

**Mezzo Piano**

37

Play with a medium soft volume.

*mf*

**Mezzo Forte**

Play with a medium loud volume.



## 60. Mexican Hat Dance

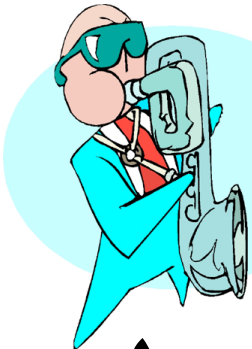
Musical notation for 'Mexican Hat Dance' in 3/4 time, key of D major. The piece starts with a *mp* dynamic and features accents (>) on several notes. It includes a first ending (1.) and a second ending (2.) with a repeat sign. Dynamics range from *mp* to *f*.



## 61. Blues Dude

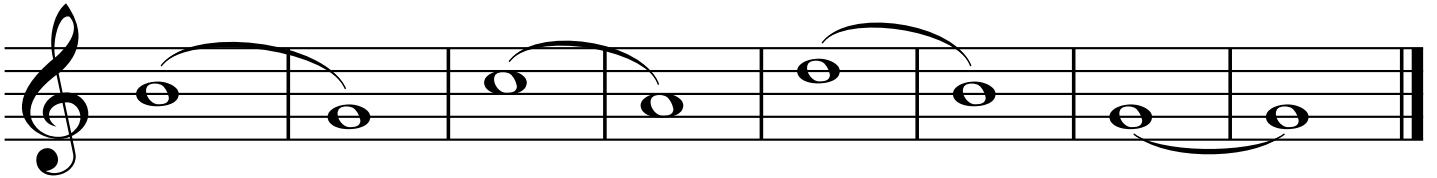
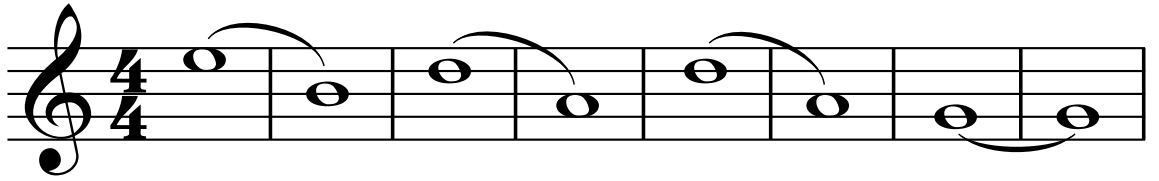
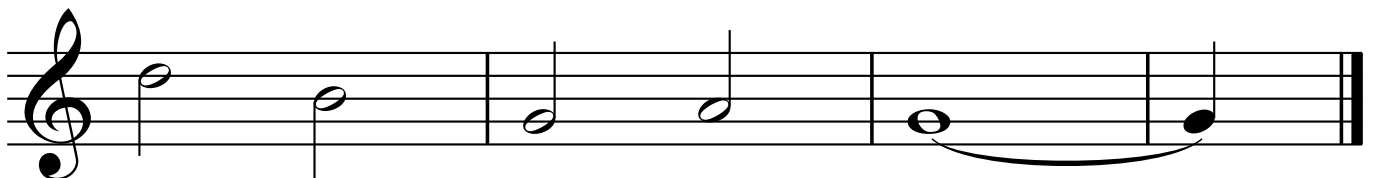
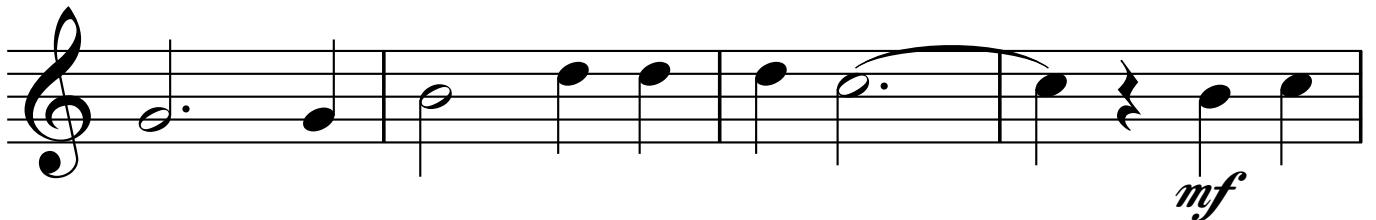
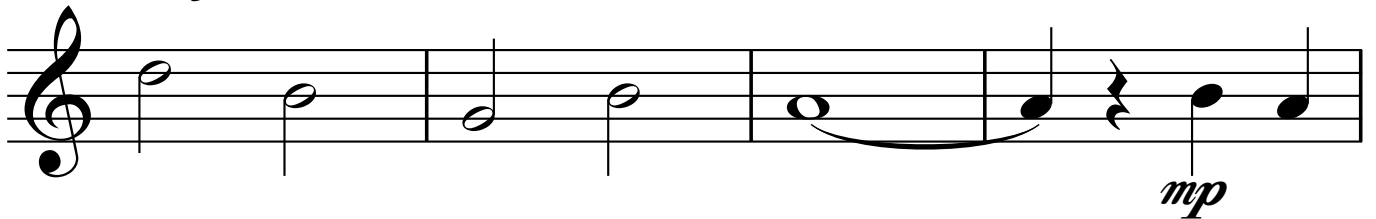
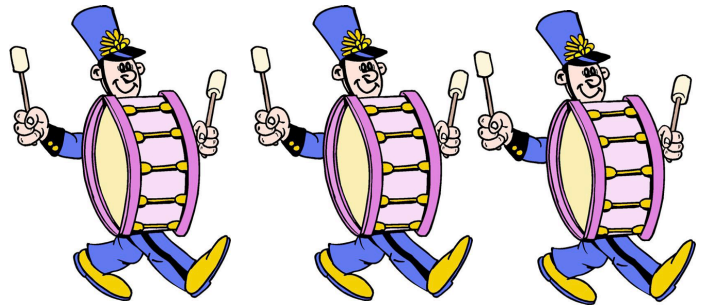
**Natural Sign**

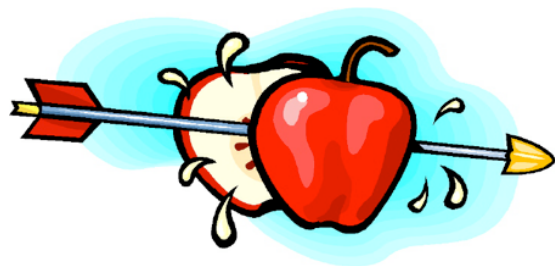
A natural sign cancels a flat or sharp.



Musical notation for 'Blues Dude' in 4/4 time, key of D major. The piece features a saxophone player and includes natural signs (♮) to cancel sharps or flats. Dynamics range from *mf* to *f*.

## 62. Big Breath Slurs

BIG  
BREATH!63. When the  
Saints Go  
Marchin' In



## 64. William Tell Overture

*mf*

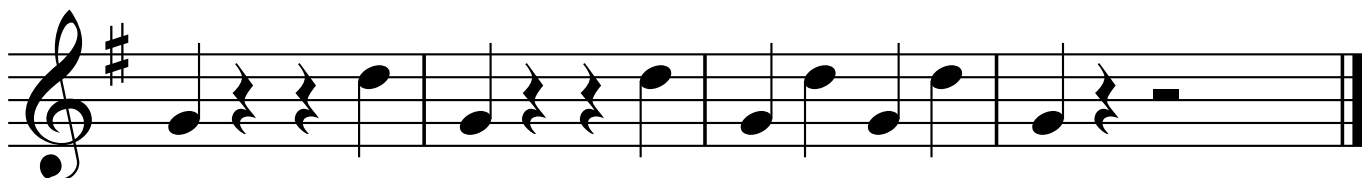
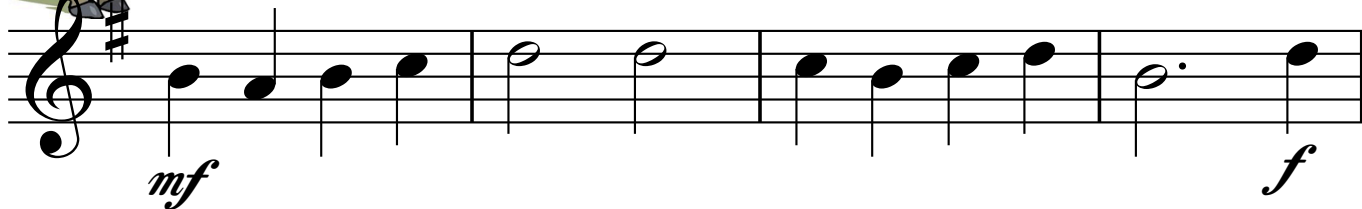
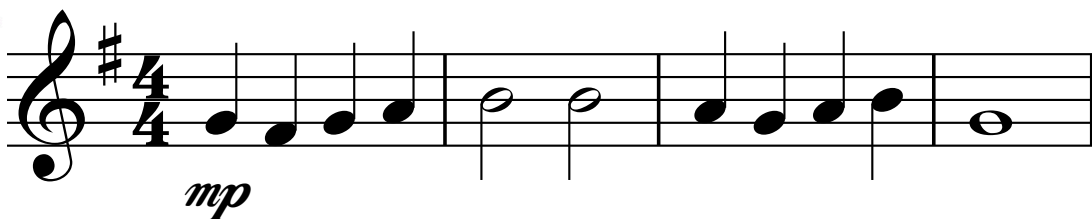
*f*



## 65. This Old Man

*mf*

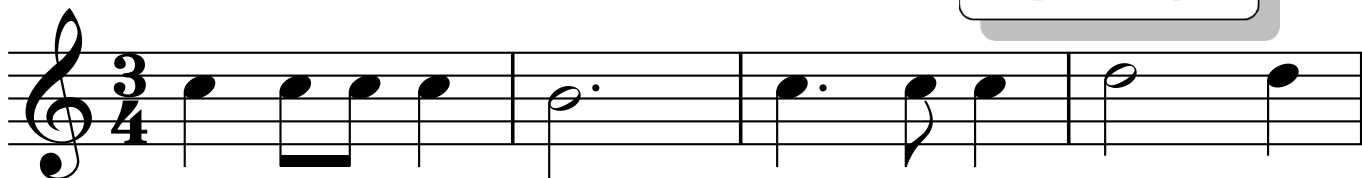
# 66. Sweetly Sings the Donkey



[www.recorderfunbook.com/page40](http://www.recorderfunbook.com/page40)



# 67. Danger! Tricky Rhythms





# 68. Bye, Baby Bunting



Musical notation for the first line of "Bye, Baby Bunting". It features a treble clef, a 2/4 time signature, and a piano (*p*) dynamic marking. The notes are G, E, A, G, E, G, G, E, A, G, E.

Musical notation for the second line of "Bye, Baby Bunting". The notes are G, G, E, E, G, G, E, E, G, G, E, A, G, G, G.



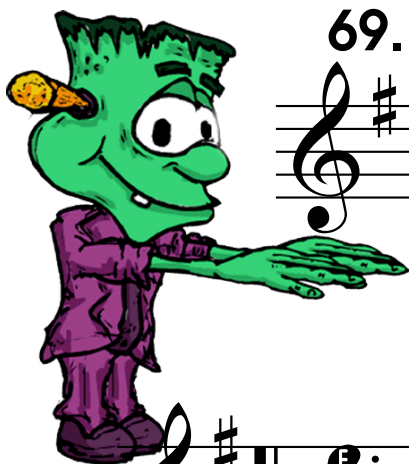
Crescendo



Decrescendo



# 69. Monster Melodies



Musical notation for the first line of "Monster Melodies". It features a treble clef, a key signature of one sharp (F#), and a 4/4 time signature. The notes are E, B, G, E, G, B, A, G, F#.



Musical notation for the second line of "Monster Melodies". The notes are E, F#, G, E, E, F#, G, E, G.



## 70. Old Brass Wagon

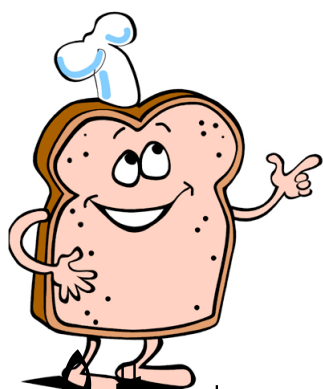


Musical score for "Old Brass Wagon" in G major (one sharp) and 2/4 time. The score consists of four staves of music. The first staff begins with a dynamic marking of *mf*. The melody is simple and repetitive, featuring eighth and quarter notes with some phrasing slurs.

## 71. Kookaburra



Musical score for "Kookaburra" in G major (one sharp) and 2/4 time. The score consists of four staves of music. The first staff begins with a dynamic marking of *mf*, and the third staff begins with a dynamic marking of *mp*. The melody is simple and repetitive, featuring eighth and quarter notes with some phrasing slurs.



## 72. Shortnin' Bread

Musical notation for "Shortnin' Bread" in G major (one sharp) and 4/4 time. The piece consists of three staves of music. The first staff begins with a dynamic marking of *mf*.

## 73. The Erie Canal



Musical notation for "The Erie Canal" in G major (one sharp) and 4/4 time. The piece consists of three staves of music. The first staff begins with a dynamic marking of *mf* and includes a *f* marking later in the staff. The second staff has a *mf* marking, and the third staff has a *f* marking.

## 74. Can Can



Musical score for "Can Can" in G major (one sharp) and 2/4 time. The score consists of three staves. The first staff begins with a treble clef, a key signature of one sharp (F#), and a 2/4 time signature. The dynamic marking *mf* is placed below the first staff. The second staff continues the melody. The third staff features a first ending (1.) and a second ending (2.) marked above the staff.

## 75. La Bamba



Musical score for "La Bamba" in G major (one sharp) and 4/4 time. The score consists of four staves. The first staff begins with a treble clef, a key signature of one sharp (F#), and a 4/4 time signature. The dynamic marking *mf* is placed below the first staff. The second and third staves continue the melody with various rhythmic patterns. The fourth staff shows a bass line with chords and rests.

# 76. Simple Gifts






Musical score for "Simple Gifts" in G major, 4/4 time. The score consists of three staves. The first staff begins with a treble clef, a key signature of one sharp (F#), and a 4/4 time signature. The music starts with a mezzo-piano (*mp*) dynamic. The second and third staves continue the melody. The third staff ends with a mezzo-forte (*mf*) dynamic marking and a fermata over the final note.










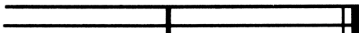
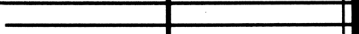
# 77. Amazing Grace


Musical score for "Amazing Grace" in G major, 3/4 time. The score consists of four staves. The first staff begins with a treble clef, a key signature of one sharp (F#), and a 3/4 time signature. The music starts with a mezzo-piano (*mp*) dynamic. The second and third staves continue the melody. The second staff has a mezzo-forte (*mf*) dynamic marking. The fourth staff ends with a fermata over the final note.


## GLOSSARY OF MUSICAL TERMS


<b>QUARTER REST</b>	 = One beat of silence
<b>HALF REST</b>	 = Two beats of silence
<b>WHOLE REST</b>	 = Four beats of silence


<b>WHOLE NOTE</b>	 = Four beats of sound
<b>DOTTED HALF NOTE</b>	 = Three beats of sound
<b>HALF NOTE</b>	 = Two beats of sound
<b>DOTTED QUARTER NOTE</b>	 = One and one half beats of sound
<b>QUARTER NOTE</b>	 = One beat of sound
<b>Two EIGHTH NOTES</b>	 = One beat of time (two sounds)
<b>One EIGHTH NOTE</b>	 = One half beat of sound


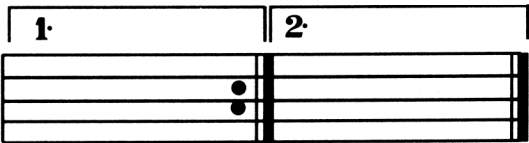



<b>STAFF</b>		Lines & spaces
<b>MEASURE</b>		Box for notes

<b>TREBLE CLEF SIGN</b>	 = A musical sign, found at the beginning of the staff which tells us that the notes are for the recorder and other high sounding instruments.
-------------------------	---

<b>REPEAT SIGN</b>	 = Play the music again
--------------------	--

<b>DOT</b>	 = A dot after a note adds half the value of the note.
------------	---

<b>PICK-UP NOTES</b>	 Note(s) that come before the first full measure of a piece of music.
----------------------	---

<p><b>TIME SIGNATURE</b></p> <p>The top number tells you how many beats in each measure.</p>	<p><math>\frac{4}{4}</math> or <b>C</b> = Four beats per measure</p>
	<p><math>\frac{3}{4}</math> = Three beats per measure</p>
<p><b>KEY SIGNATURE</b></p>	<p> When you see one sharp at the beginning of a piece, play all the F's as F SHARP.</p>
<p><b>SHARP</b></p>	<p><math>\sharp</math> = Raises a note one half step</p>
<p><b>ROUND</b></p>	<p>A round is played by a group. Everyone plays the same tune, but a few bars apart. The parts blend together.</p>
<p><b>FIRST &amp; SECOND ENDINGS</b></p>	<p></p> <p>The first time through the piece, play the first ending and repeat as usual. The second time through, skip the first ending and play the second ending.</p>
<p><b>SLUR</b></p>	<p> = A <b>slur</b> is a curved line that connects two notes of different pitches. Tongue the first note and move to the second note without tonguing. Don't stop blowing.</p>
<p><b>TIE</b></p>	<p> = A <b>tie</b> is a curved line that connects two notes of the same pitch. Hold the note for the combined value of the two notes.</p>
<p><b>FERMATA</b></p>	<p> = Hold the note until your director tells you to stop.</p>
<p><b>DYNAMICS</b></p>	<p><i>f</i> = forte • Play with a <b>full</b> volume.  <i>p</i> = piano • Play with a <b>soft</b> volume.</p>



**Congratulations on completing the Flute Fun Book!**

---

*Signed by the Music Teacher*

*Date*