

Welcome to the wonderful world of sax playing. Your teacher has shown you how to hold your instrument and make a sound on the mouthpiece.



Let's play our first song!



1. Our First Note

NEW NOTE "B"





2. Our Second Note

NEW NOTE "C"

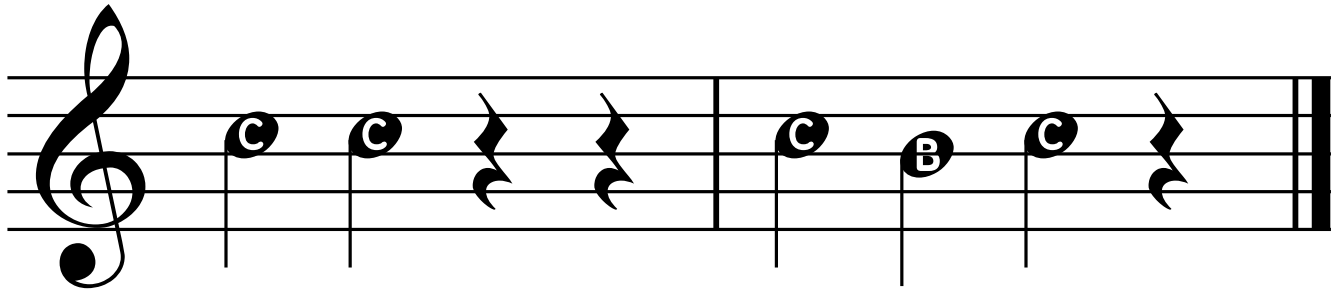
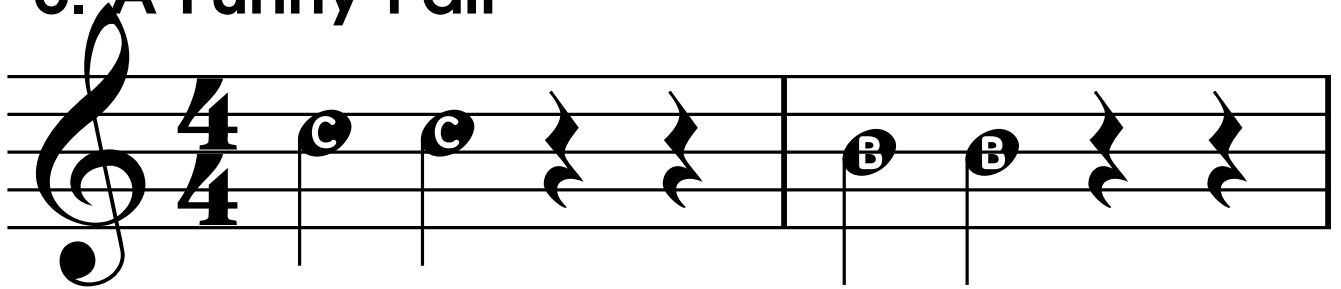
3. Three's a Crowd


4. Four In a Row



-  Quarter notes get one beat of sound.
-  Whole notes get four beats of sound.

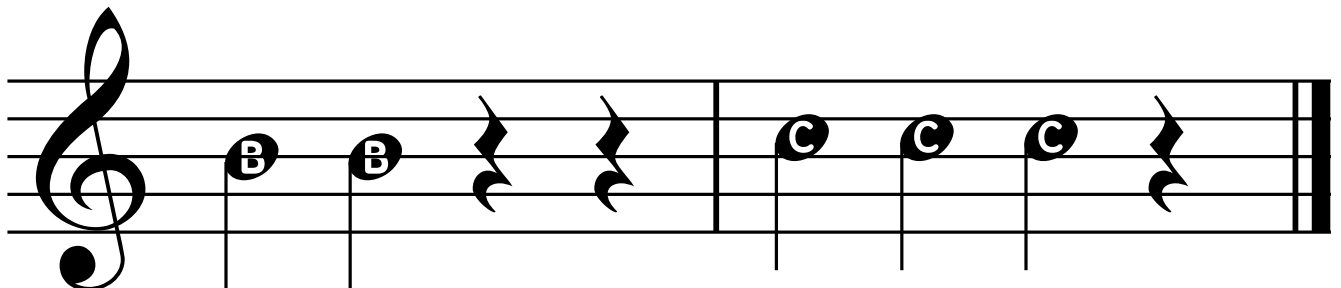
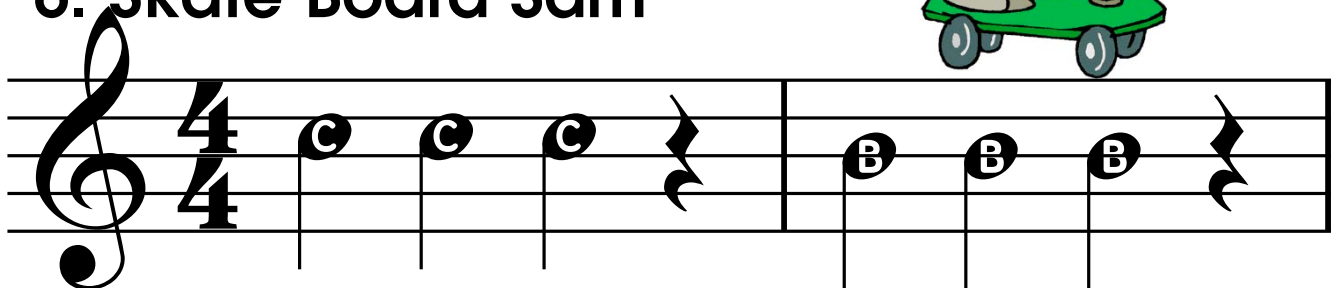
5. A Funny Pair



-  Quarter note rests get one beat of silence.

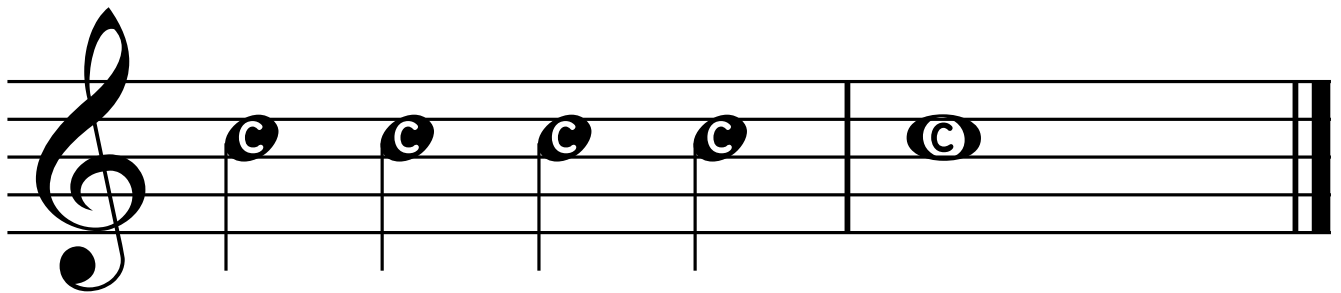
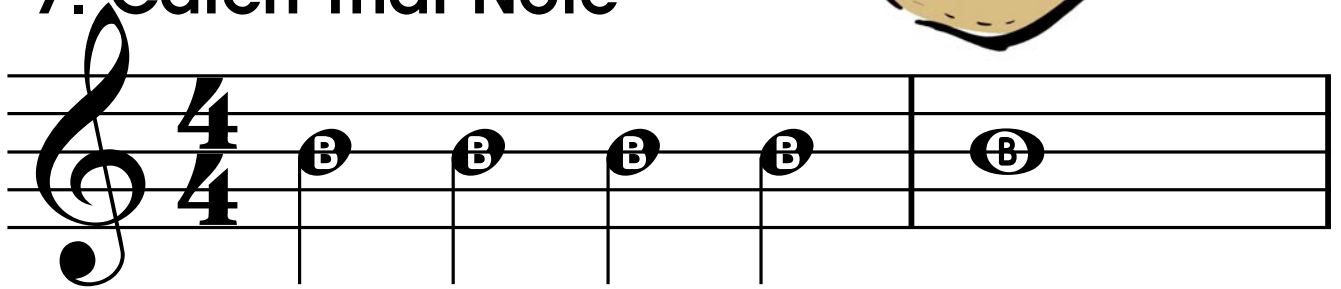


6. Skate Board Sam

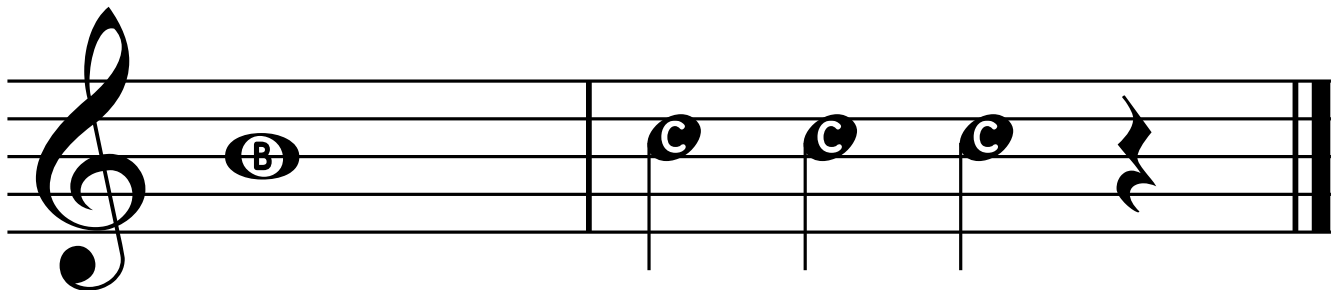
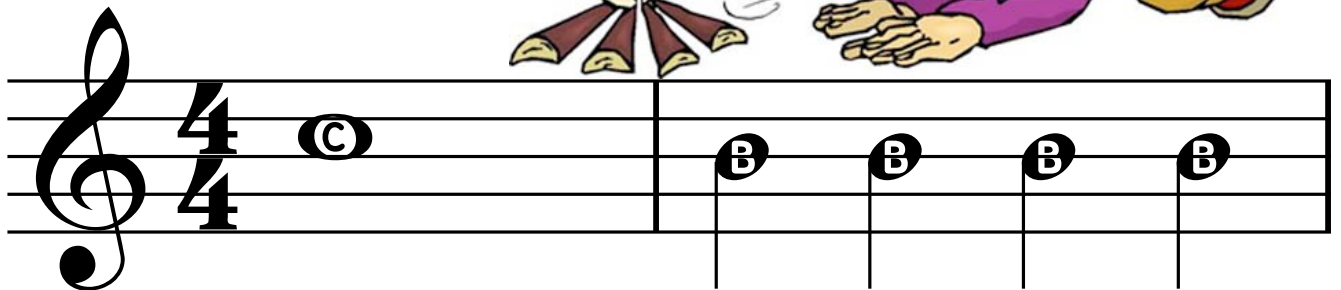




7. Catch That Note



8. Keep On Blowin'





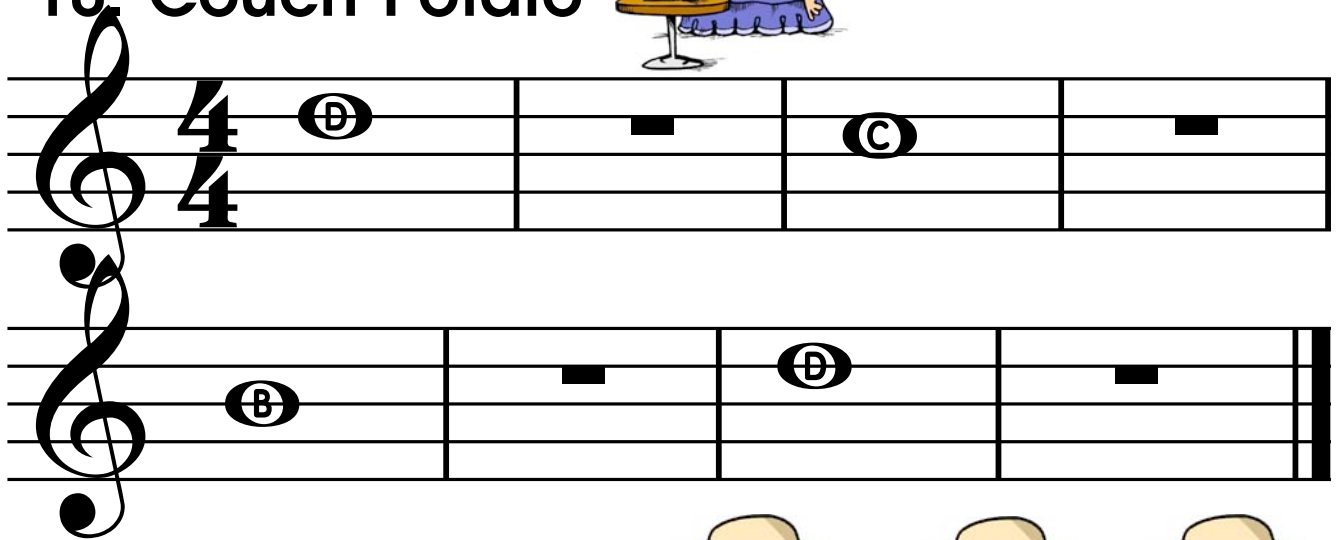
9. Our Third Note

NEW NOTE "D"

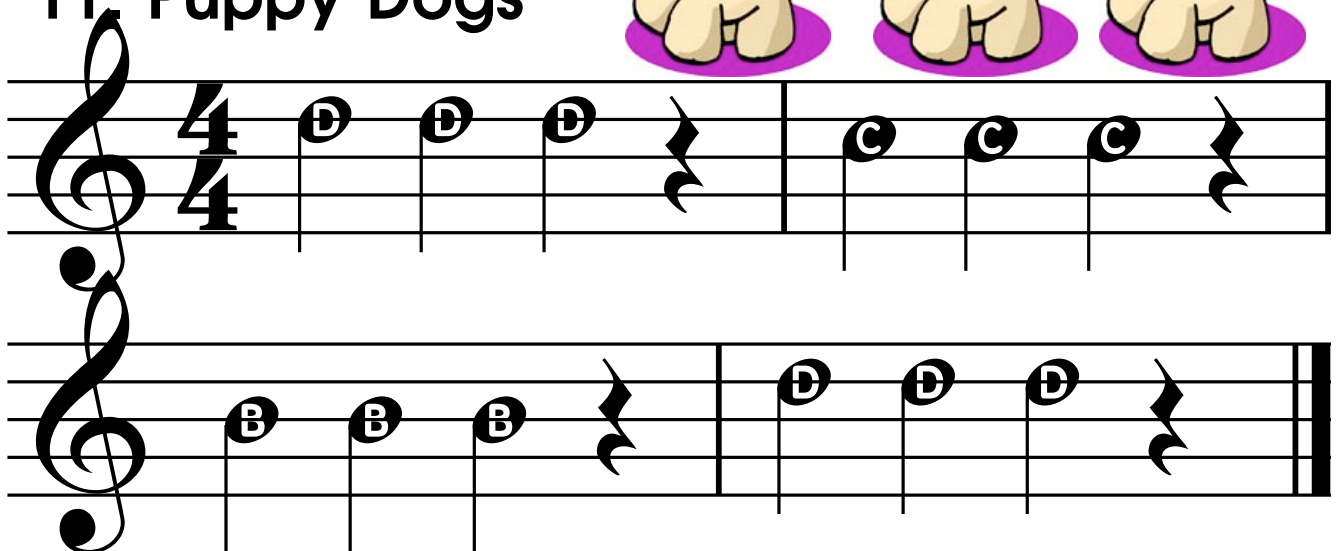


Whole rests get four beats of silence.

10. Couch Potato



11. Puppy Dogs



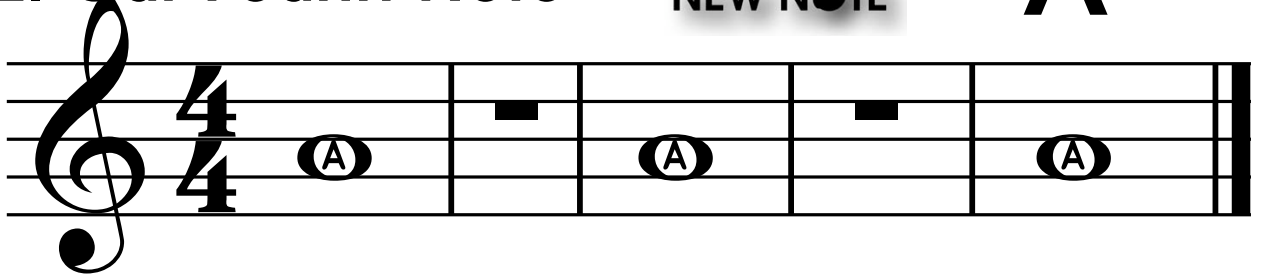


12. Our Fourth Note

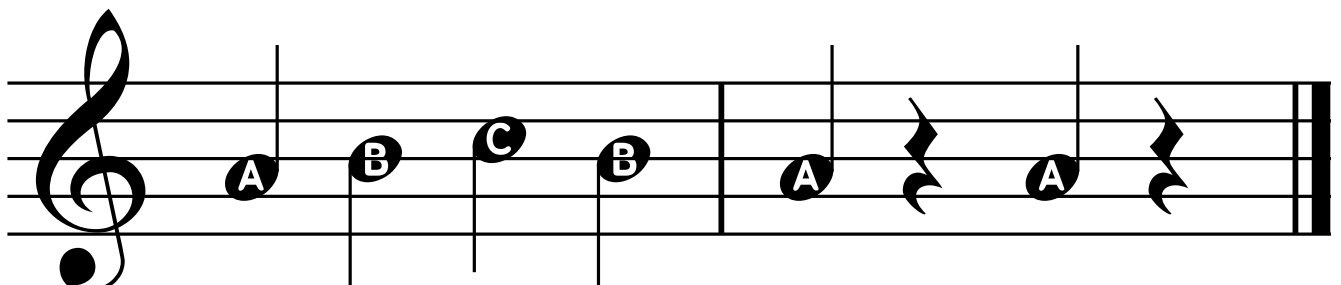
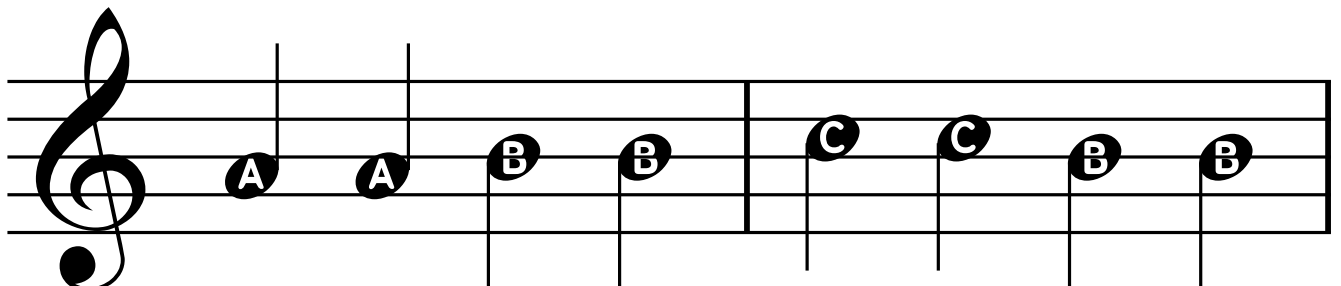
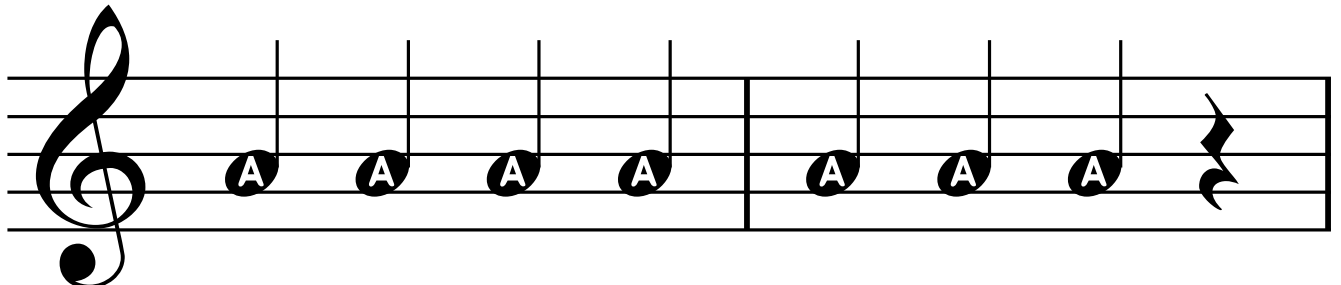
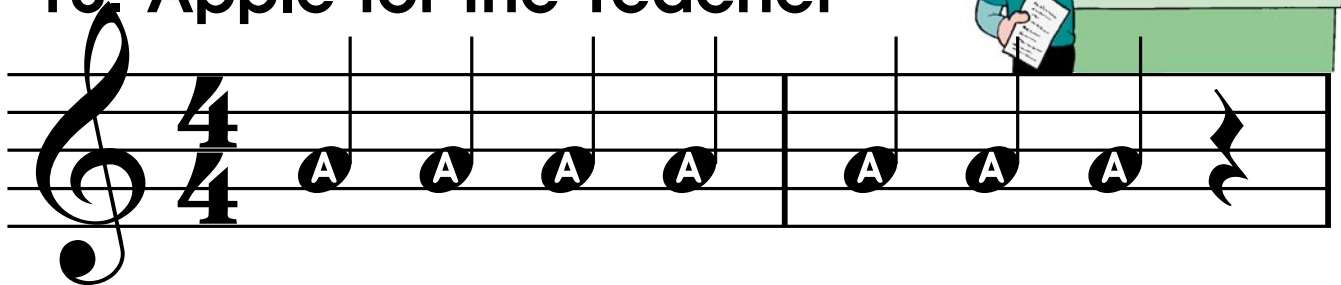
NEW NOTE

"A"

5



13. Apple for the Teacher





14. Our Fifth Note

NEW NOTE

"G"

15. Bumper Cars





Half Note

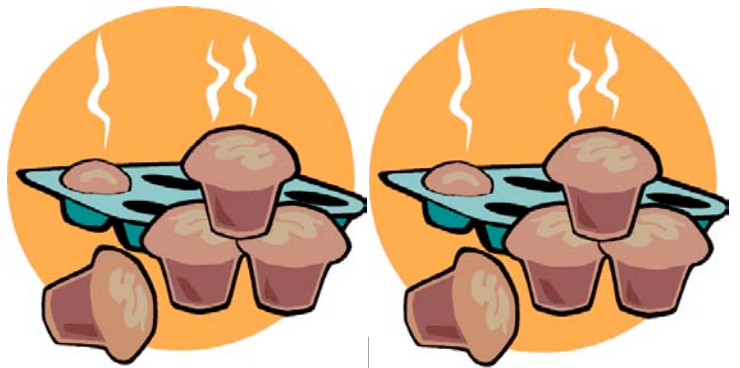
Two Beats of Sound



16. Half Notes Happen

Musical staff in 4/4 time showing a sequence of half notes: B, B, D, D, B, C, B, G.

17. Hot Cross Buns

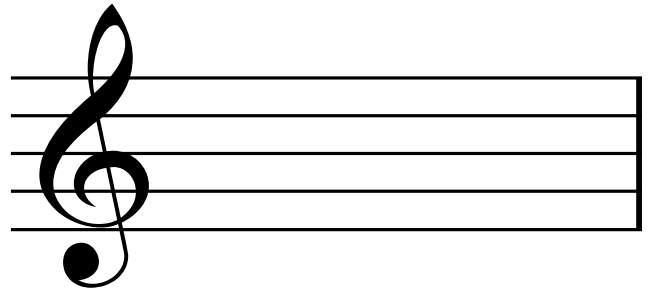


Musical staff in 4/4 time showing a sequence of half notes: B, A, G, B, A, G.

Musical staff in 4/4 time showing a sequence of notes: G, G, G, G, A, A, A, A, B, A, G.

8

Notes are written on lines and spaces called the "staff".

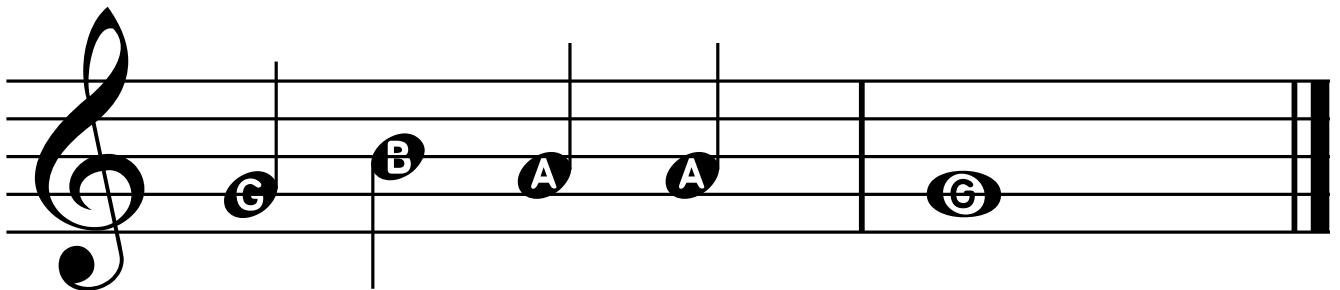
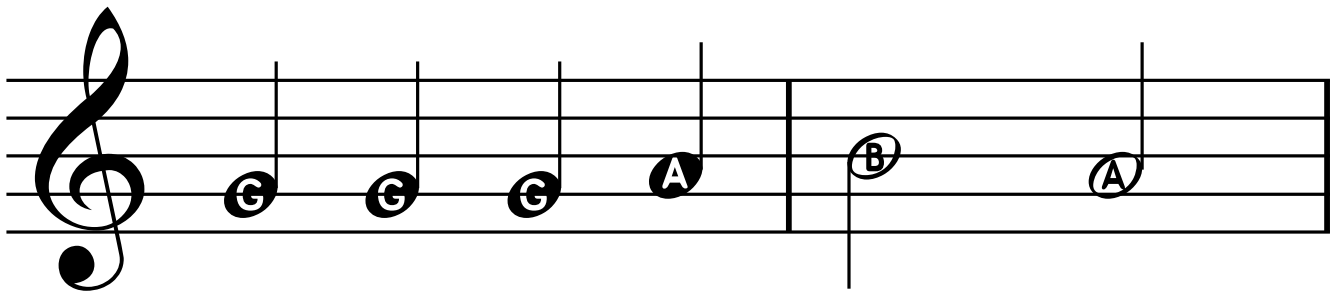
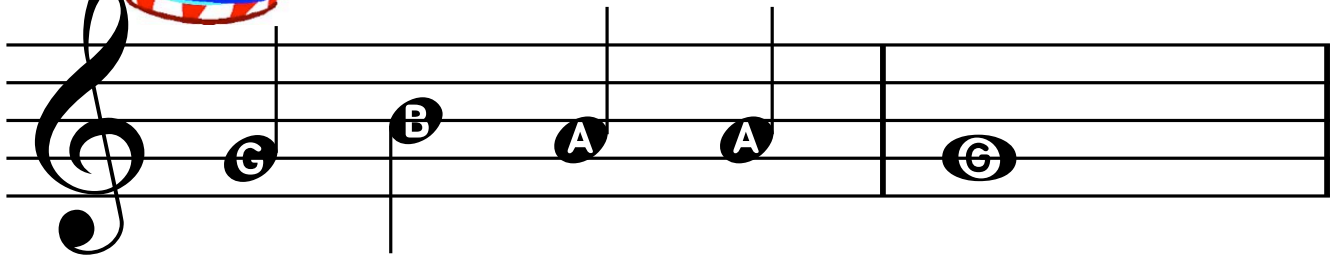
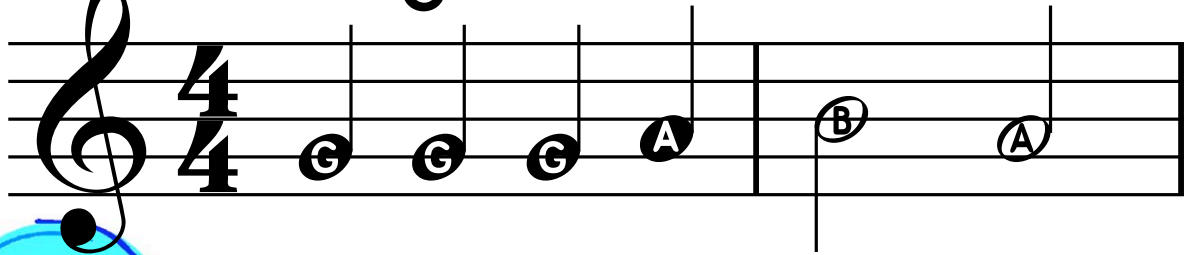


How many lines can you find?

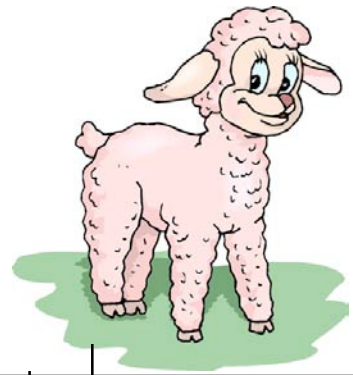
How many spaces can you find?



18. High Dive



19. Mary Had a Little Lamb



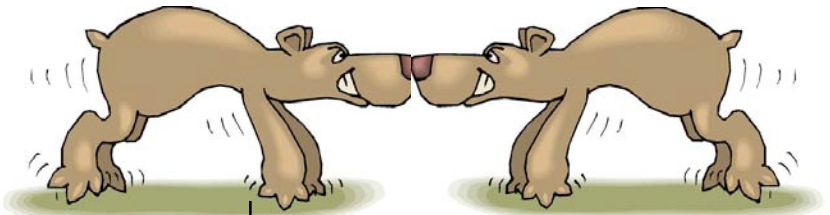
Musical notation for "Mary Had a Little Lamb" in 4/4 time, featuring a treble clef and chord letters (B, A, G, A, B, B, B, A, A, A, B, D, D) placed above the notes.



When you see this logo, follow the link for additional songs and exercises online.

www.bandfunbook.com/PAGE9

20. Bad News Bears



Musical notation for "Bad News Bears" in 4/4 time, featuring a treble clef and chord letters (B, A, B, A, G, C, B, C, B, A, D, C, B, A, D, G) placed above the notes.



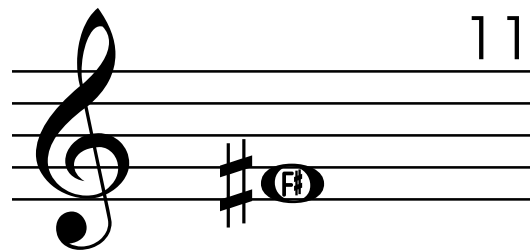
21. Dreydl, Dreydl



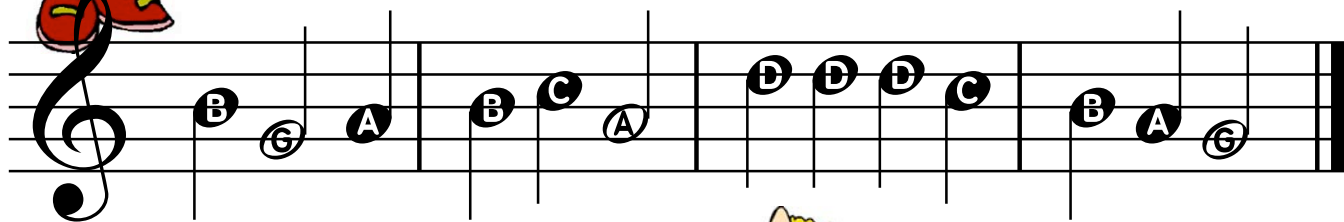
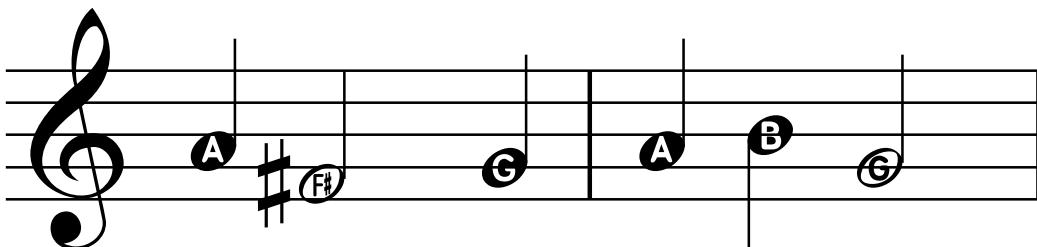
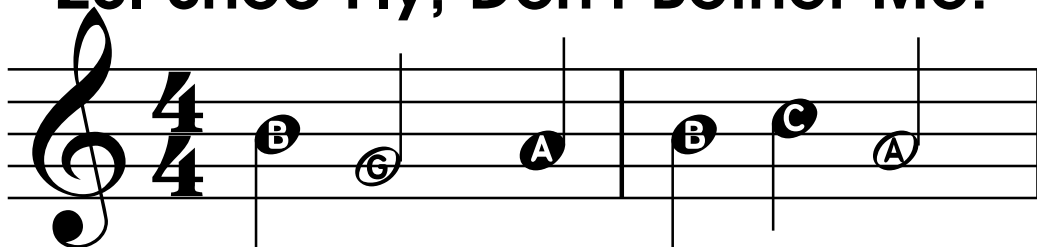
22. Notes Without Letters

Low "F#"

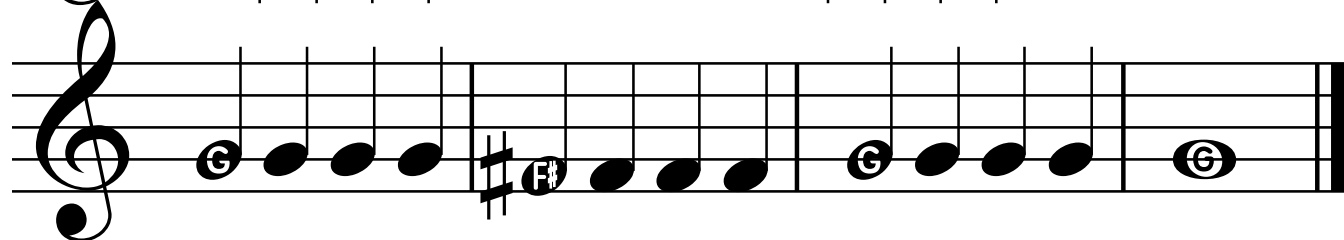
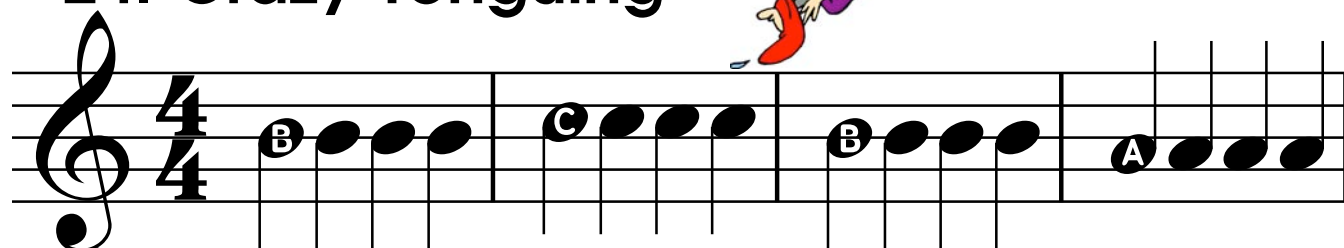
NEW NOTE



23. Shoo Fly, Don't Bother Me!



24. Crazy Tonguing



Rhythm Fun



Eighth Notes

One eighth note gets 1/2 count.
Two eighth notes get ONE count.

A $\frac{4}{4}$

B $\frac{4}{4}$

C $\frac{4}{4}$

D $\frac{4}{4}$

E $\frac{4}{4}$



25. Yankee Doodle Cha Cha



Musical notation for "Yankee Doodle Cha Cha" in 4/4 time, consisting of two staves of treble clef notation with lettered notes.

Staff 1: G G A A B | G B A A A | G G A A B | G A A A

Staff 2: G G A A B | C B A A G | A G A A A | G G G G

26. Caribbean Cruise



Musical notation for "Caribbean Cruise" in 4/4 time, consisting of two staves of treble clef notation with lettered notes.

Staff 1: C D E E E | D A | B C D D D | C G

Staff 2: C D E E E | D D | B D B | C

27. Country Hoe Down

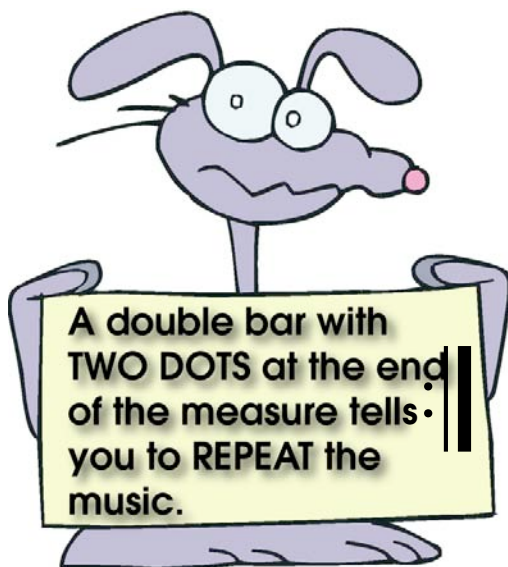


Musical notation for "Country Hoe Down" in 4/4 time, consisting of two staves of treble clef notation with lettered notes.

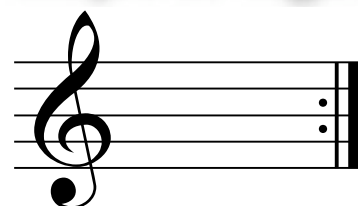
Staff 1: G G G A A | B G G A | B B B A G | A A

Staff 2: G G G A A | B B B C | D C C B A | G G

28. Eighth Note Slide

Repeat Sign

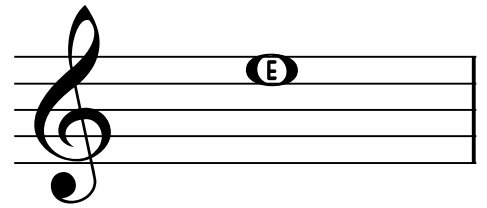


29. The Cabbage Song

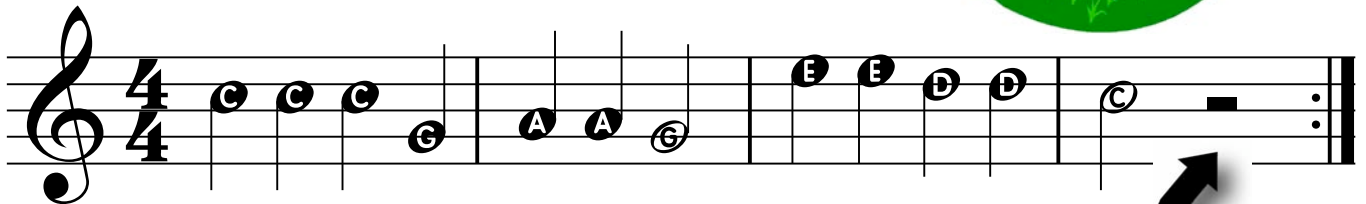




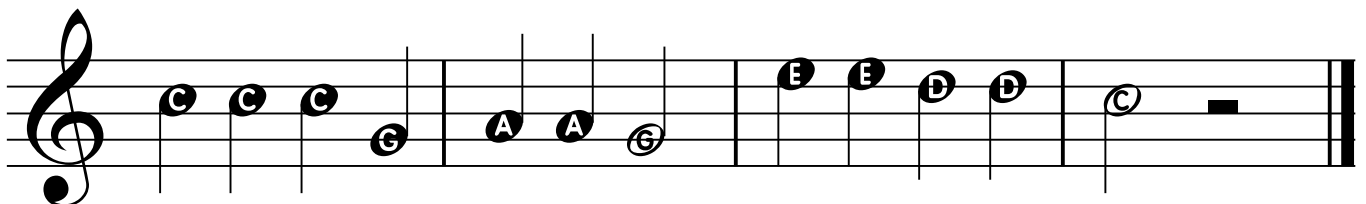
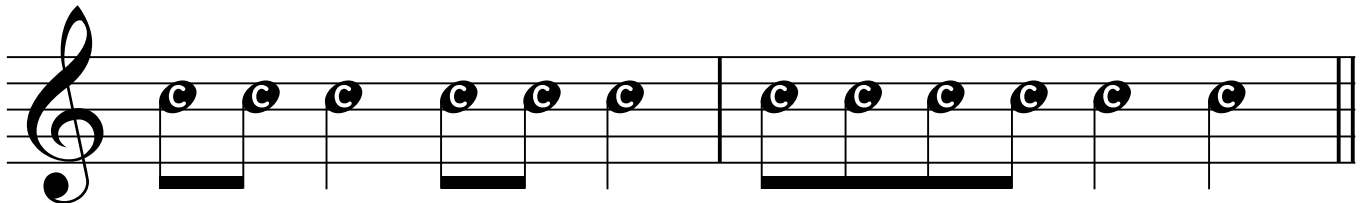
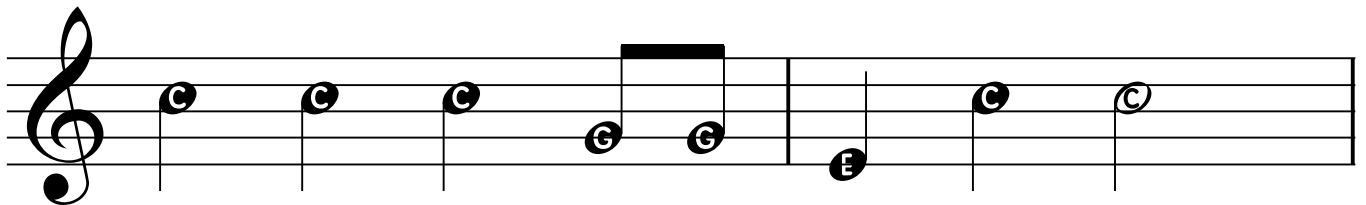
NEW NOTE
"E"

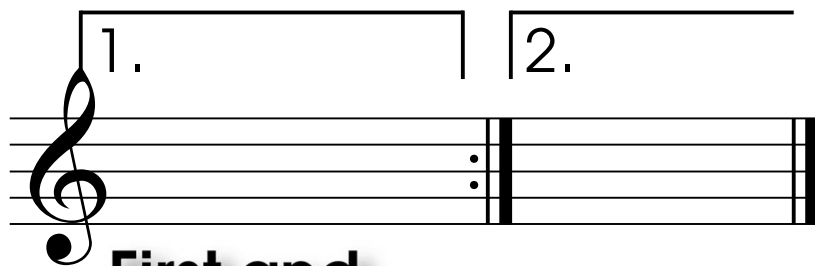


30. Old MacDonald Had a Farm



Half note rests get two beats of silence.

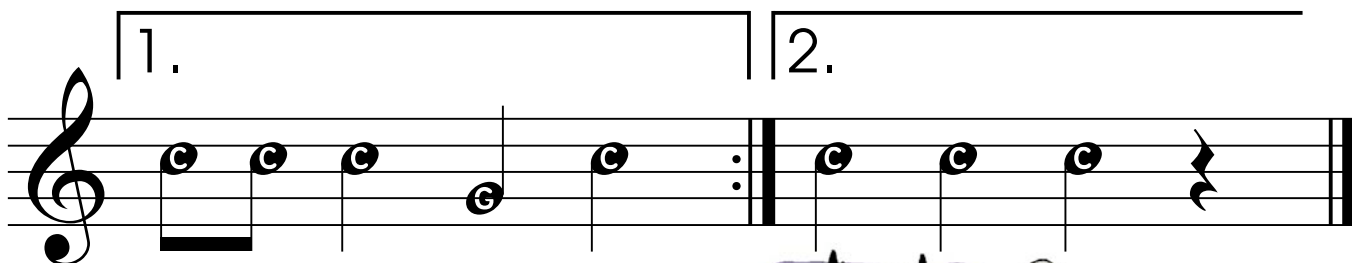
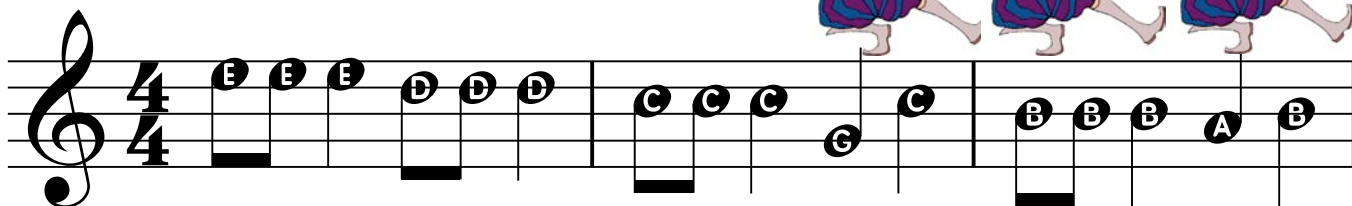




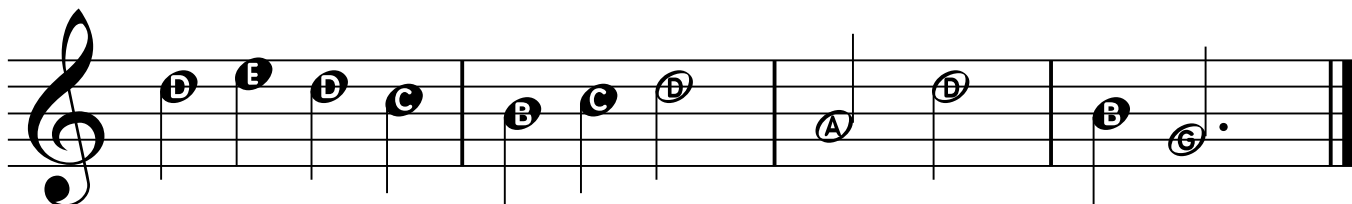
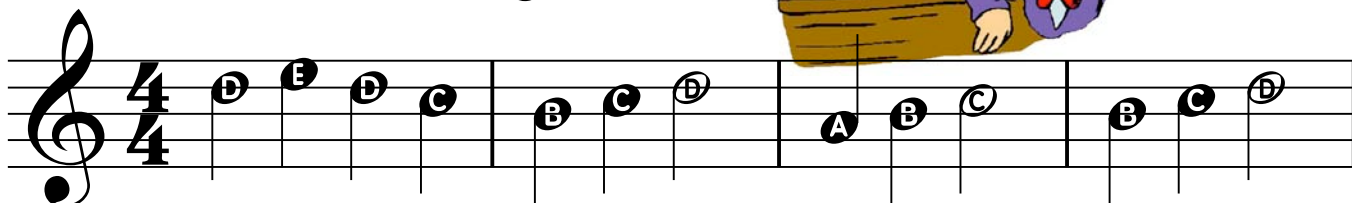
First and Second Endings

When you reach the repeat sign under the first ending, stop and go back to the beginning. When you get to the first ending again, skip it and go to the second ending.

31. Stodola Pumpa



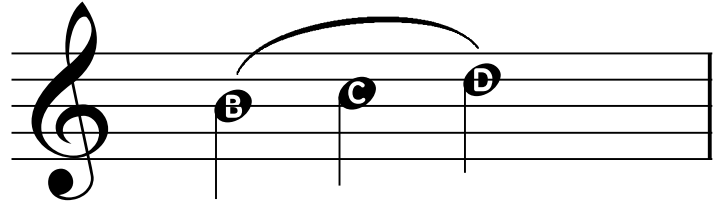
32. London Bridge





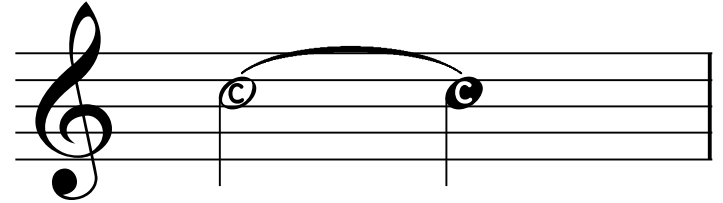
Slur

A "slur" is a curved line that connects two or more notes of different pitches. Tongue the first note and move to the next notes without tonguing. Don't stop blowing.

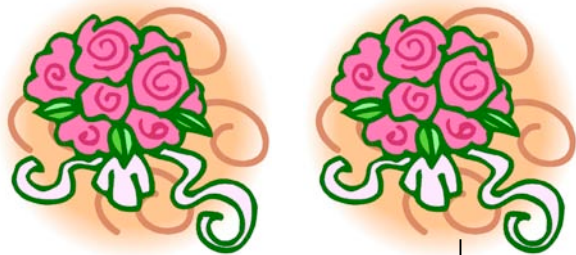


Tie

A "tie" is a curved line that connects two or more notes of the same pitch. Hold the note for the combined value of the notes.



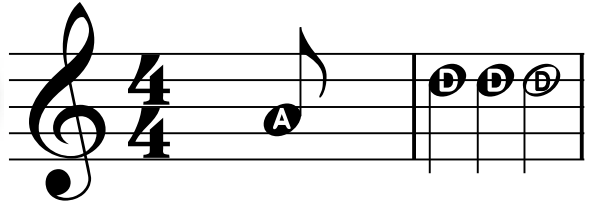
33. Southern Roses





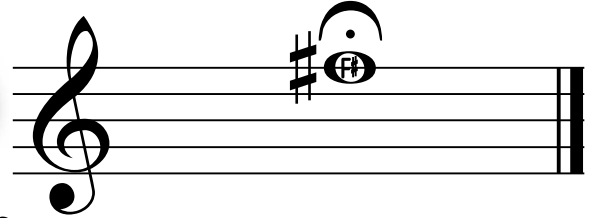
Pick-Up Notes

Note(s) that come before the first full measure of a piece of music.

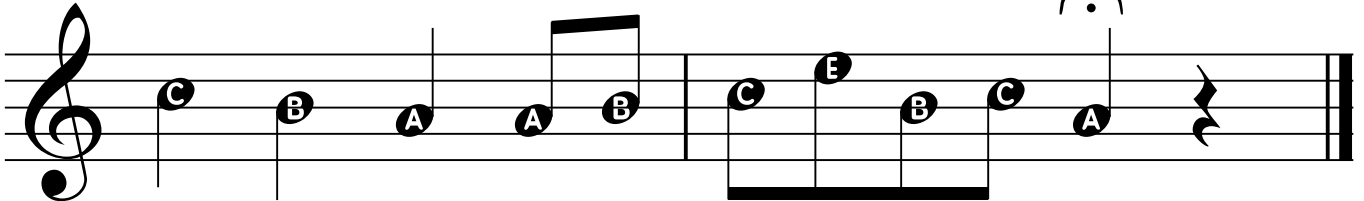
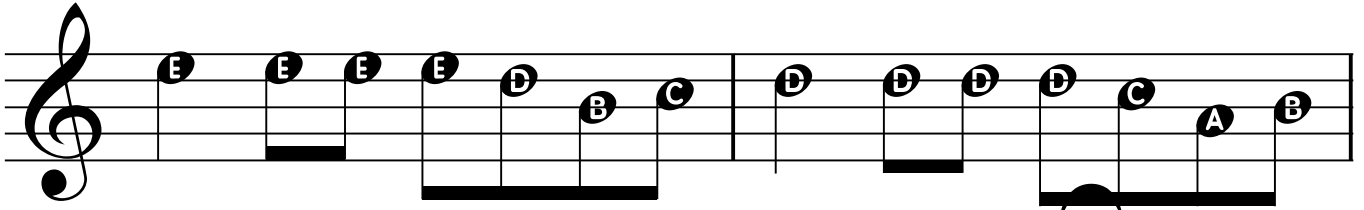
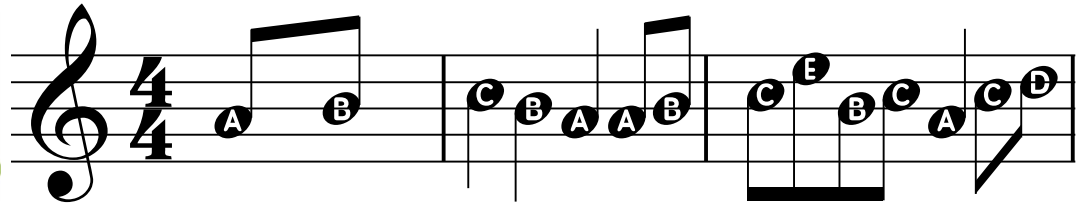


Fermata (Hold)

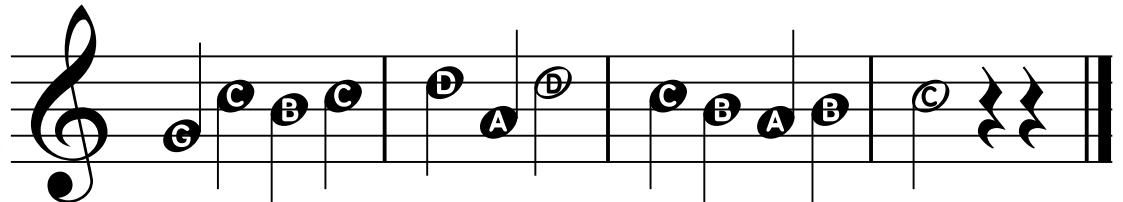
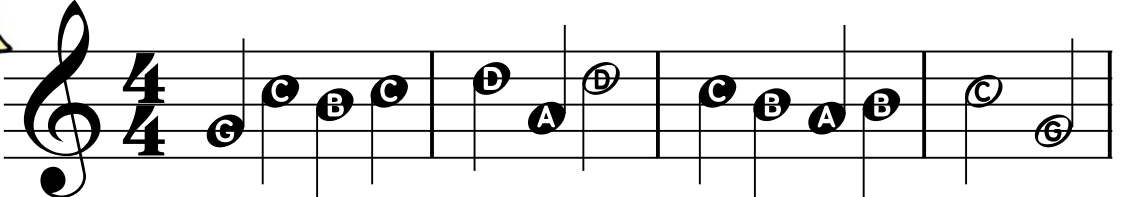
Hold (keep blowing) the note until your director tells you to stop,



34. Snake Charmer

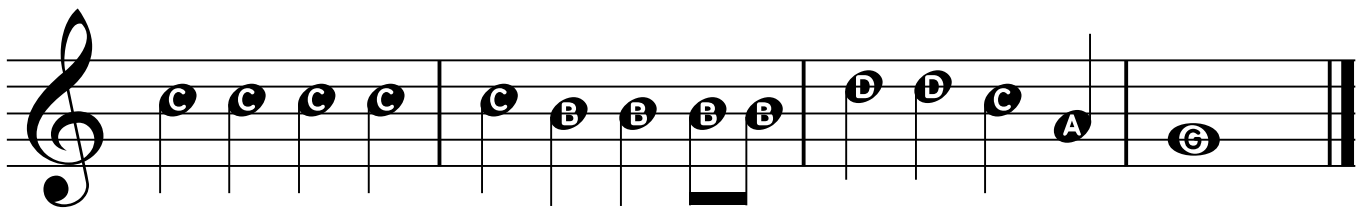
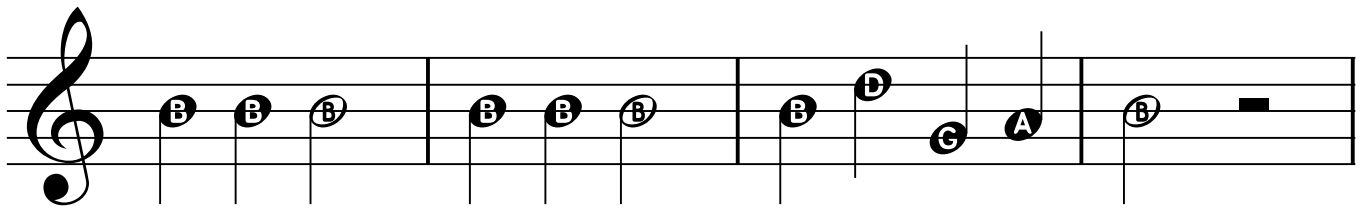
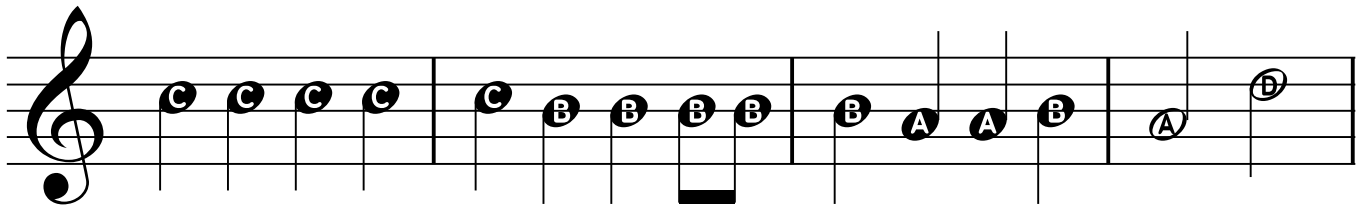
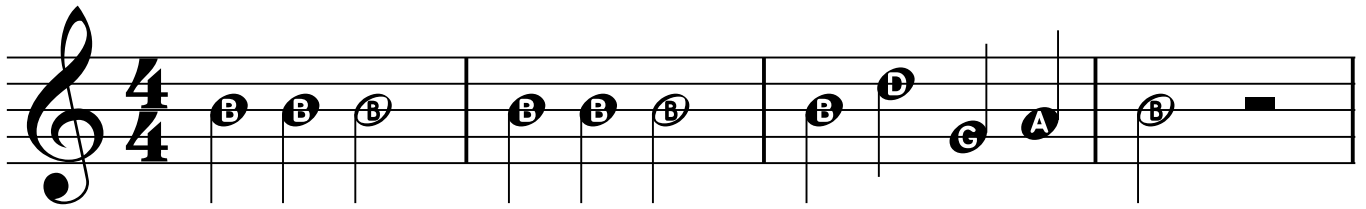


35. Aura Lee





36. Jingle Bells





D.C. al Fine

Go back to the beginning and play until "Fine".

37. Twinkle, Twinkle, Little Star

Fine

D. C. al Fine



D.S. al Fine

Go back to the sign and play until "Fine".



The "sign"



38. Ode to Joy

Fine

D.S. al Fine



Natural Sign



A "natural" cancels a flat or sharp.
It stays in effect for the entire measure.

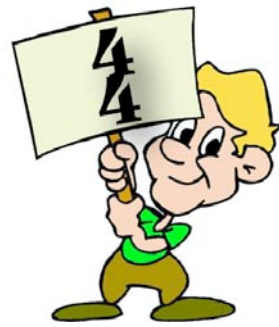
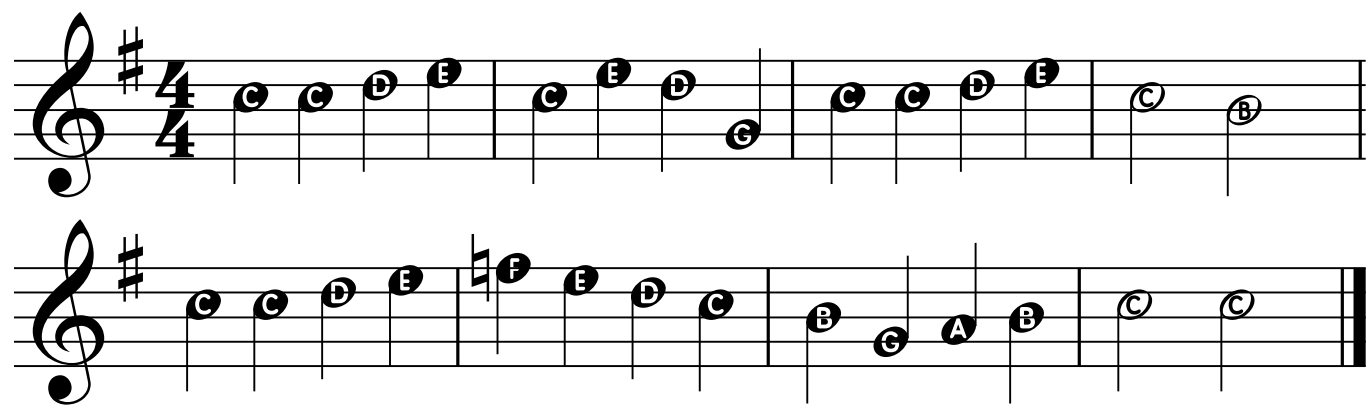
NEW NOTE



F Natural



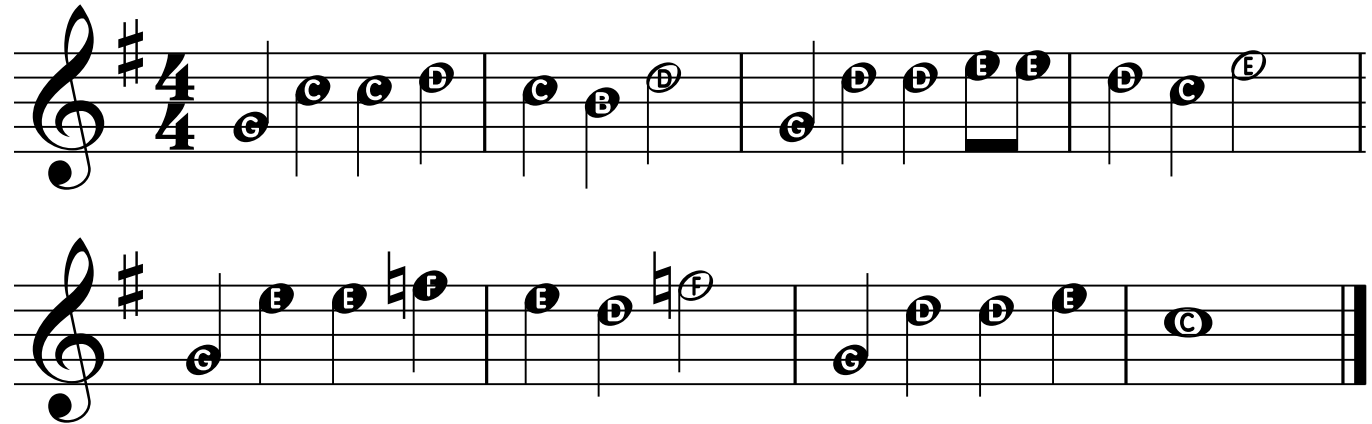
39. Yankee Doodle



Time Signature

A "time signature" tells you how many beats there are in each measure of music.

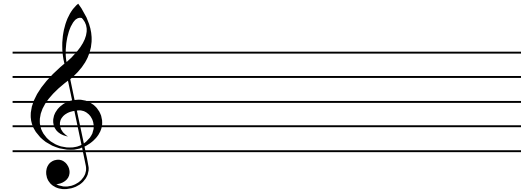
40. Little Cabin in the Wood





Key Signature

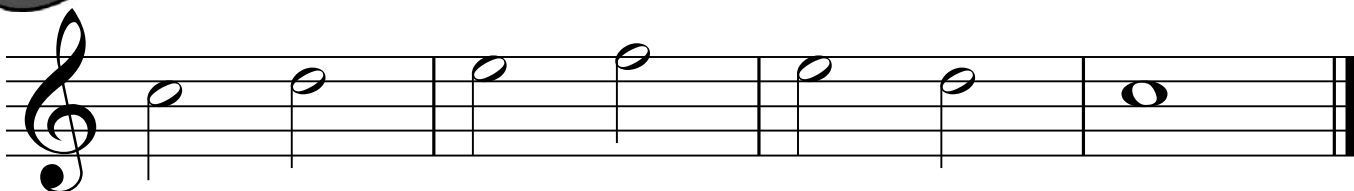
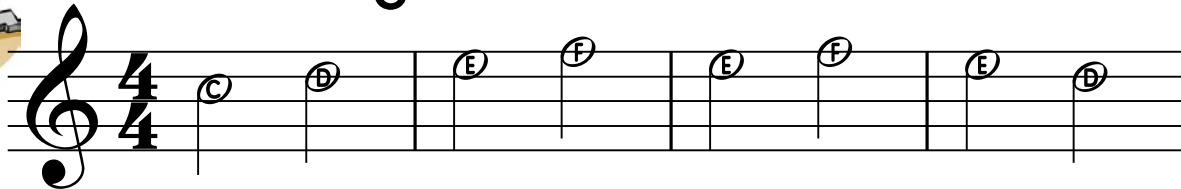
A "key signature" changes certain notes throughout a piece of music.



When you see this key signature, play all the notes natural.

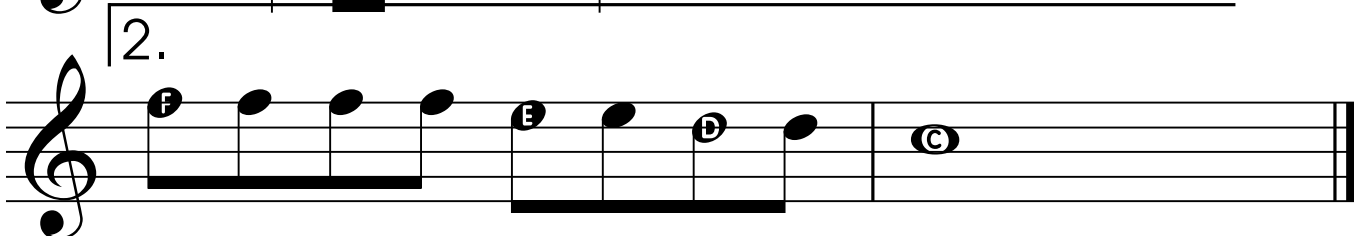
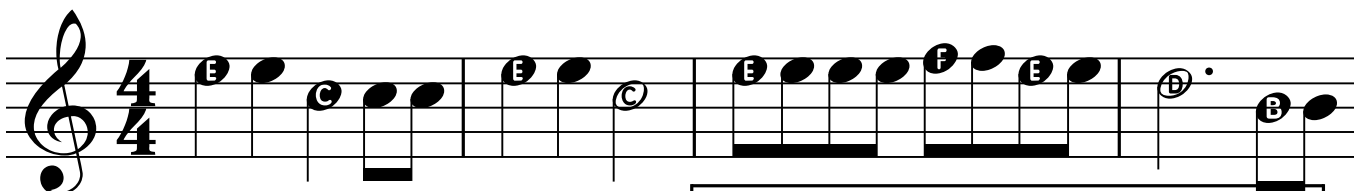


41. It's a Ringer!



www.bandfunbook.com/PAGE22

42. Polly Wolly Doodle





46. Jolly Old St. Nick

Musical notation for "Jolly Old St. Nick" in G major, 2/4 time. The first staff shows the main melody with notes E, E, E, E, D, D, D, C, C, C, C, E, A, A, A, A. The second staff shows two endings: 1. G, G, C, B, C, D, E, D; 2. D, C, D, E, C.

The Israeli National Anthem, HATIKVA, means "The Hope." Hatkiva expresses the hope of the Jewish people that they would someday return to the land of their forefathers.



47. Hatikvah

Musical notation for "Hatikvah" in G major, 4/4 time. The first staff shows the main melody with notes A, B, C, D, E, E, F, E, F, F, E. The second staff shows the continuation with notes D, D, B, C, C, B, A, B, C, A.

48. Slippery Slurs



Musical notation for "Slippery Slurs" in G major, 4/4 time. The melody consists of slurred notes: D, B, G, C, A, F, G, B, D, B, A, G.



Round

Playing the same music beginning at different times.

49. Are You Sleeping?

a Four Part Round

Musical notation for 'Are You Sleeping?' showing four parts starting at different times. Part 1 starts at the beginning, Part 2 starts at the second measure, Part 3 starts at the third measure, and Part 4 starts at the fourth measure. The key signature is one sharp (F#) and the time signature is 4/4.



Dynamics

p

Piano

Play with a soft volume.

f

Forte

Play with a full volume.

50. Minka, Minka

Musical notation for 'Minka, Minka' showing dynamics. The first part starts with a forte (*f*) dynamic and the second part starts with a piano (*p*) dynamic. The key signature is one sharp (F#) and the time signature is 2/4.

51. Rollin' Back and Forth

Use only first and second valves.
First measure think "Tah-Eee-Ah".

Musical notation for 'Rollin' Back and Forth' showing a single part with a key signature of one sharp (F#) and a time signature of 4/4.



Dotted Quarter Note

A dotted quarter note gets one and one half counts.



52. America

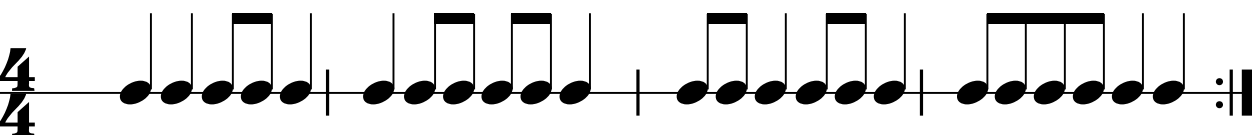


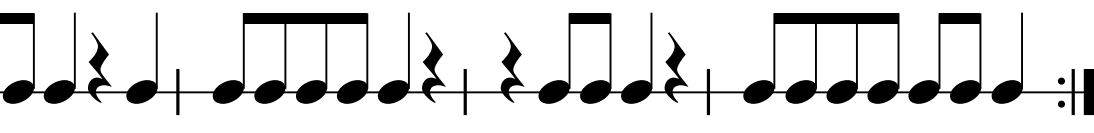

www.bandfunbook.com/PAGE26

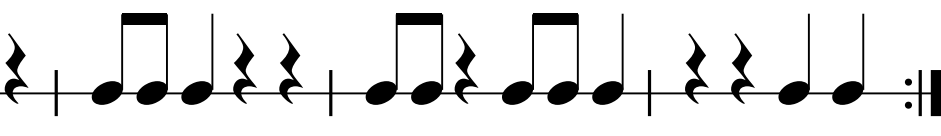
53. Technical Foul

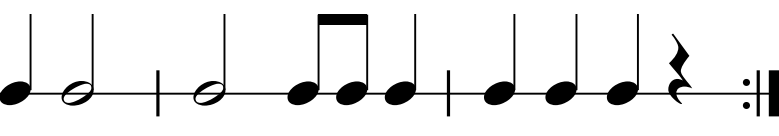


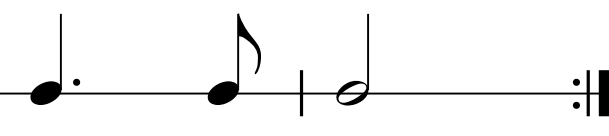
Rhythm Fun

A $\frac{4}{4}$ 

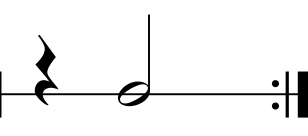
B $\frac{4}{4}$ 

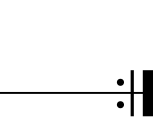
C $\frac{4}{4}$ 

D $\frac{4}{4}$ 

E $\frac{2}{4}$ 

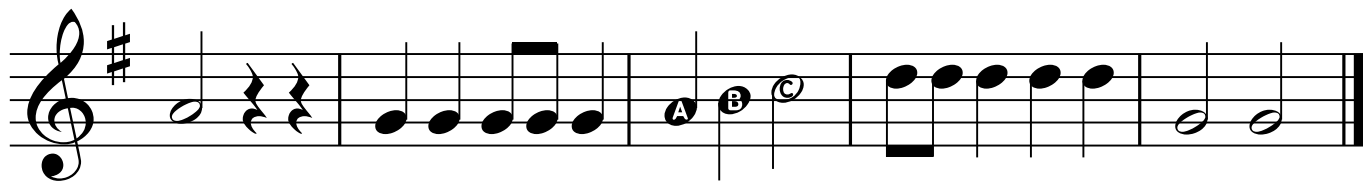
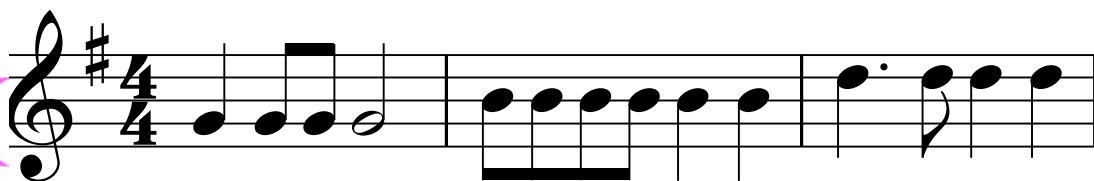
F $\frac{3}{4}$ 

G $\frac{3}{4}$ 

H $\frac{3}{4}$ 



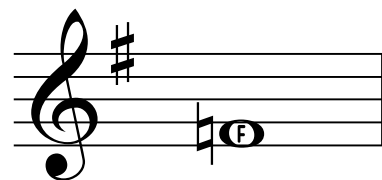
54. Rhythm Wreck



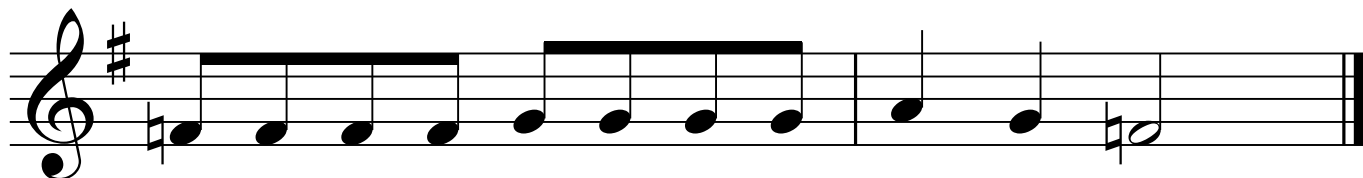
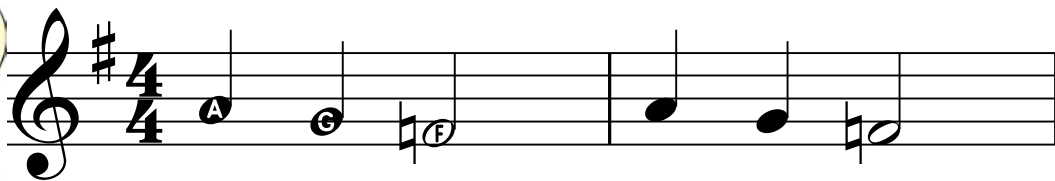
NEW NOTE



LOW F NATURAL



55. More Hot Cross Buns



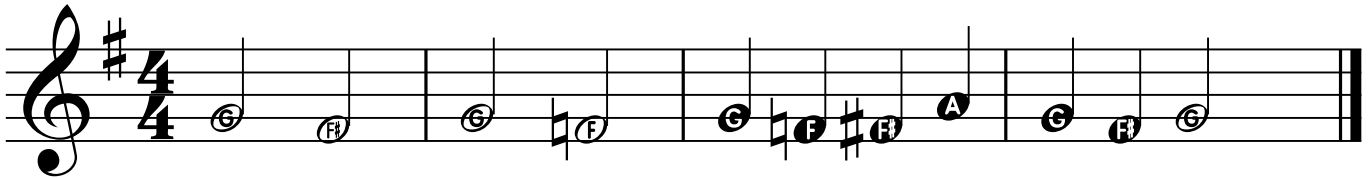


Natural Sign

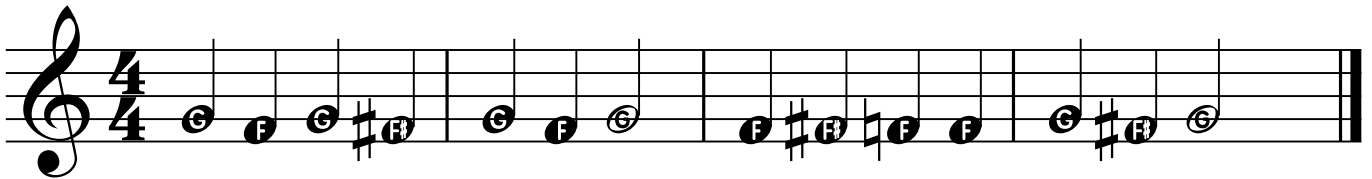


A natural sign cancels a flat or a sharp.
It remains in effect for the entire measure.

56. It Just Comes Naturally



57. Don't Be Fooled



Accent Sign

An accent sign tells you to play the note with more emphasis.



Eighth Rest

An eighth rest gets one half beat of silence.



58. Go, Fight, Win!



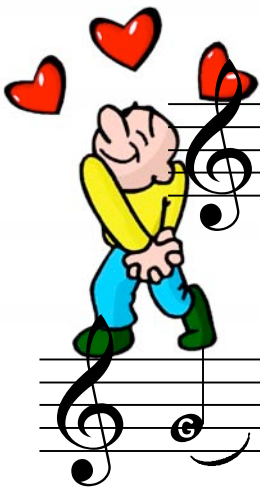
59. Bach Minuet



60. Rueben and Rachel



61. When Love Is Kind





Dynamics

mp

Mezzo Piano
Play with a medium³¹
soft volume.

mf

Mezzo Forte
Play with a medium
loud volume.

62. Mexican Hat Dance




mp *mf*

mp *mf* *f*

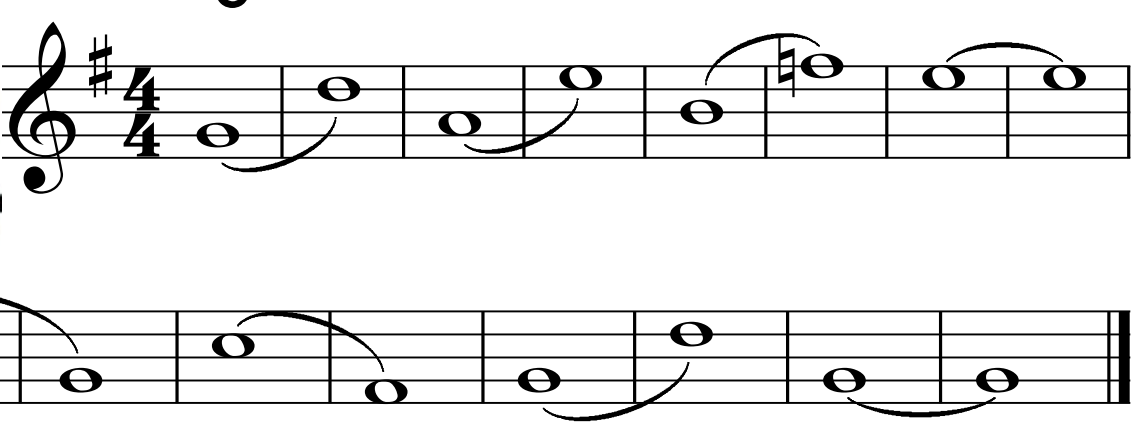
63. Blues Dues



64. Big Breath Slurs



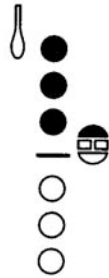
BIG BREATH!



65. When the Saints Go Marchin' In



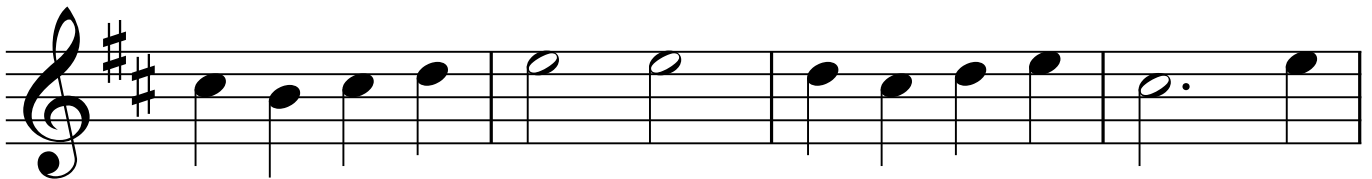
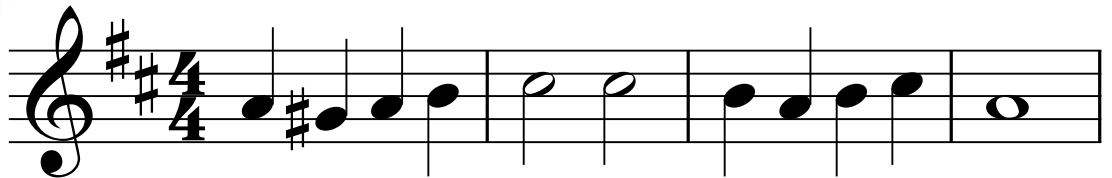
NEW NOTE



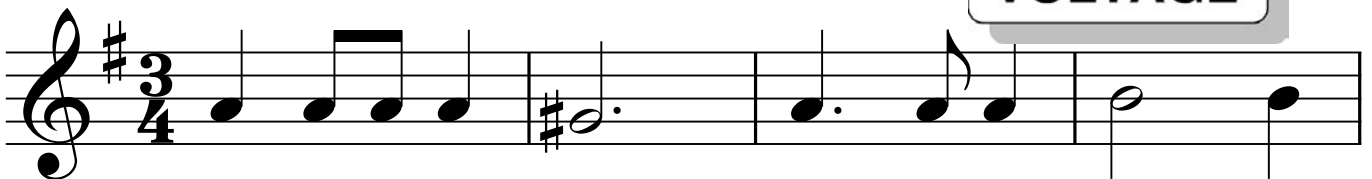
G SHARP



68. Sweetly Sings the Donkey



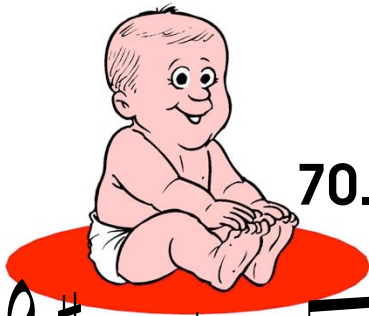
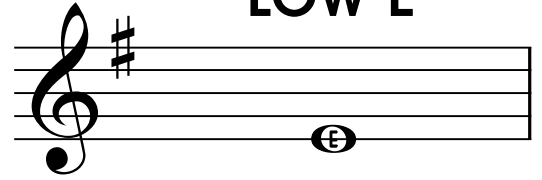
69. Danger! Tricky Rhythms



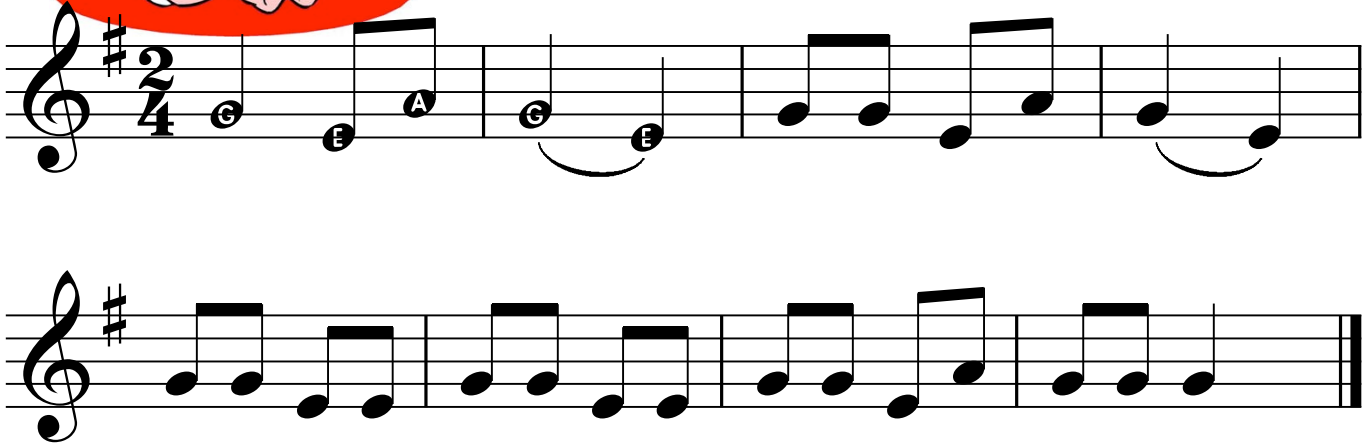
NEW NOTE



LOW E



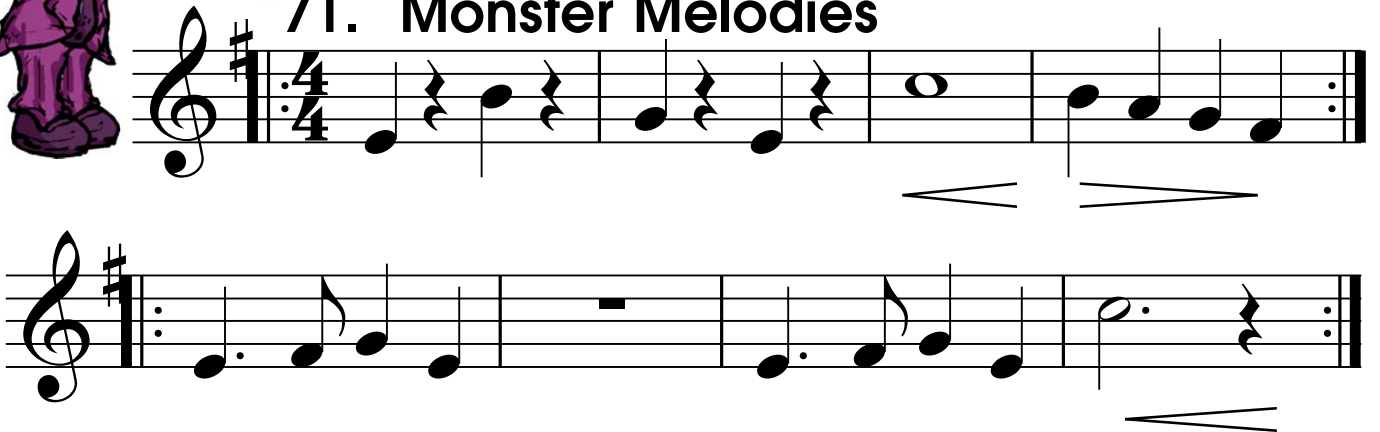
70. Bye, Baby Bunting



Crescendo *Get louder*

Decrescendo *Get softer*

71. Monster Melodies



NEW NOTE



D SHARP

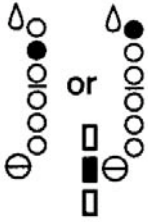
72. Barcarolle

Fun Work

Write in the letters to these notes.

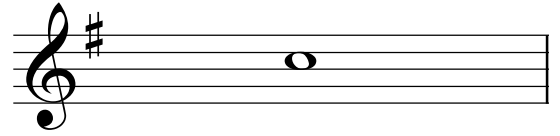


Special Page for SAXES



The Alternate "C" Fingering

Use the second fingering indicated for the alternate way to play the "C".



The Alternate "C" Fingering Exercise

More Use of Alternate "C"

74. Can Can



Musical notation for 'Can Can' in treble clef, 2/4 time, key of D major. The piece consists of three staves. The first staff begins with a treble clef, a key signature of one sharp (F#), and a 2/4 time signature. The melody is written in eighth and sixteenth notes. The second staff continues the melody. The third staff features a first ending (marked '1.') and a second ending (marked '2.').

75. La Bamba

Musical notation for 'La Bamba' in treble clef, 4/4 time, key of D major. The piece consists of four staves. The first staff begins with a treble clef, a key signature of one sharp (F#), and a 4/4 time signature. The melody is written in eighth and sixteenth notes, with some rests. The second and third staves continue the melody. The fourth staff features a bass line with chords and single notes.

76. Simple Gifts

Musical score for "Simple Gifts" in 4/4 time, consisting of three staves of music. The first staff begins with a treble clef and a 4/4 time signature. The melody consists of eighth and quarter notes, with some notes beamed together and others tied across bar lines. The second and third staves continue the melody, ending with a double bar line.

77. Amazing Grace

Musical score for "Amazing Grace" in 3/4 time, consisting of four staves of music. The first staff begins with a treble clef and a 3/4 time signature. The melody features a mix of quarter and eighth notes, with several notes beamed together and some tied across bar lines. The second, third, and fourth staves continue the melody, ending with a double bar line.

saxophone Fingering Chart

The chart displays the following notes and their corresponding fingering diagrams:

- Row 1:** A \sharp , B \flat , B, C, C \sharp , D \flat , D, D \sharp , E \flat , E
- Row 2:** F, F \sharp , G \flat , G, G \sharp , A \flat , A, A \sharp , B \flat , B
- Row 3:** C, C \sharp , D \flat , D, D \sharp , E \flat , E, E \sharp , F, F \sharp , G \flat
- Row 4:** G, G \sharp , A \flat , A, A \sharp , B \flat , B, C, C \sharp , D \flat , D

Fingering diagrams use black dots for fingers 1-4 and white circles for the thumb. Some diagrams include asterisks (*) or squares to indicate specific key actions.

* Both pearl keys are pressed with the Left Hand 1st finger.