

Welcome to the wonderful world of flute playing. Your teacher has shown you how to hold your instrument and make a sound on the mouthpiece.



Let's play our first song!

NEW NOTE

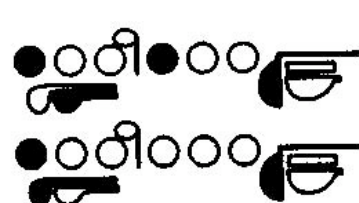
1. Our First Note

"G"



2. Our Second Note



NEW NOTE
"B FLAT"



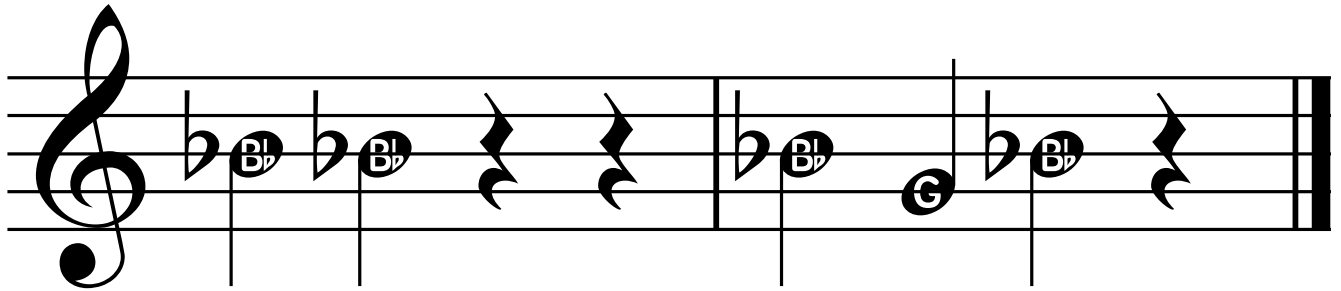
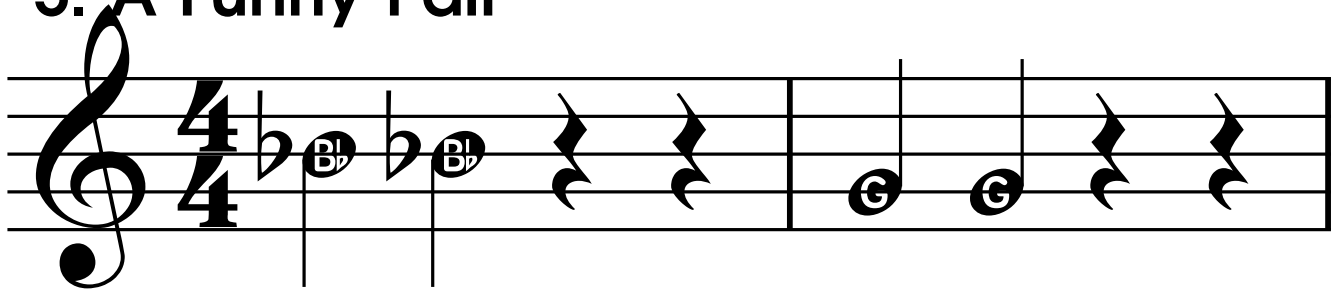
3. Three's a Crowd


4. Four In a Row



-  Quarter notes get one beat of sound.
-  Whole notes get four beats of sound.

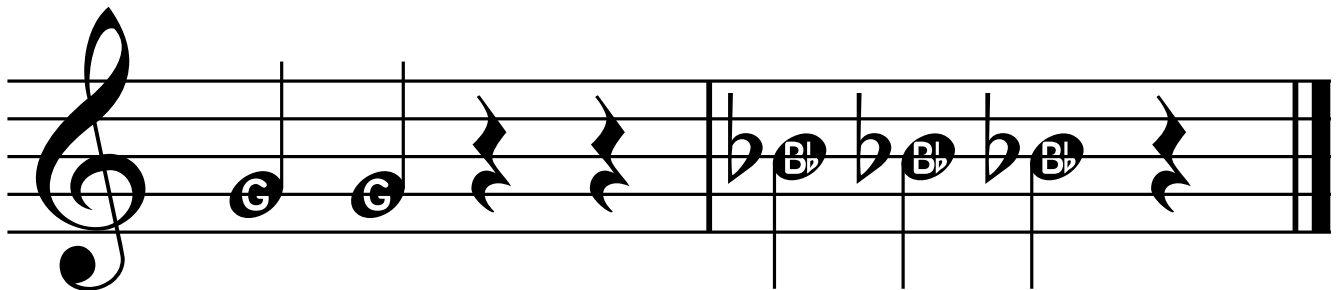
5. A Funny Pair



-  Quarter note rests get one beat of silence.

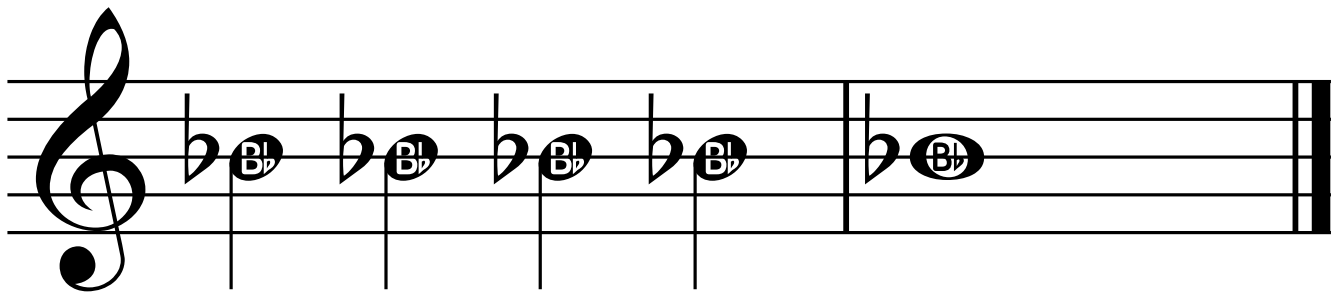
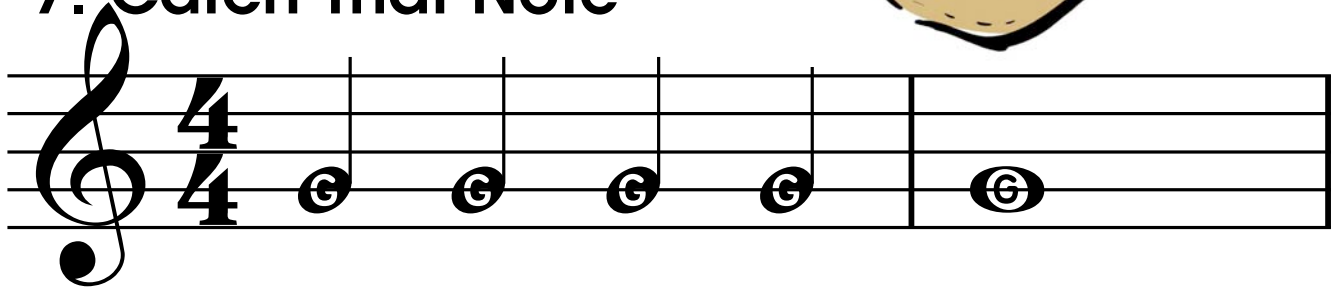


6. Skate Board Sam

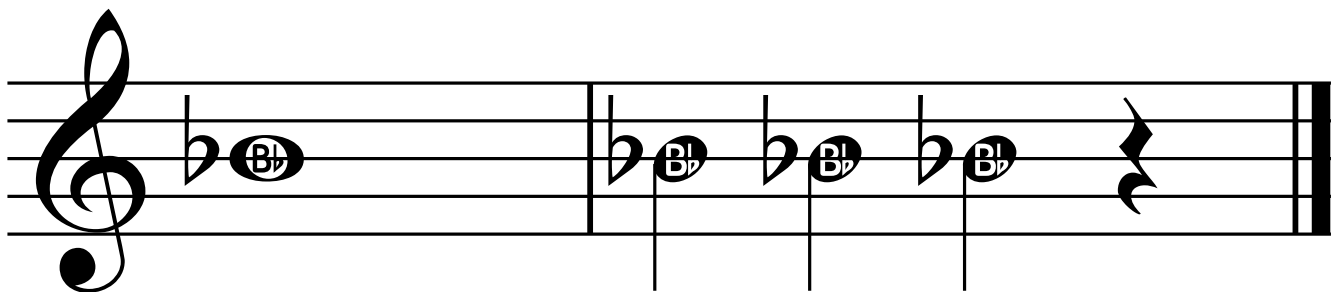
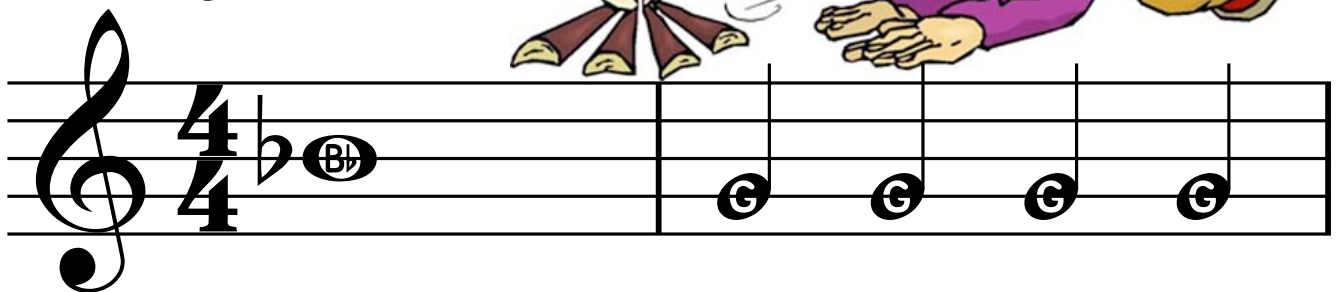




7. Catch That Note



8. Keep On Blowin'



9. Our Third Note

NEW NOTE
"F"



Whole rests get four beats of silence.

10. Couch Potato



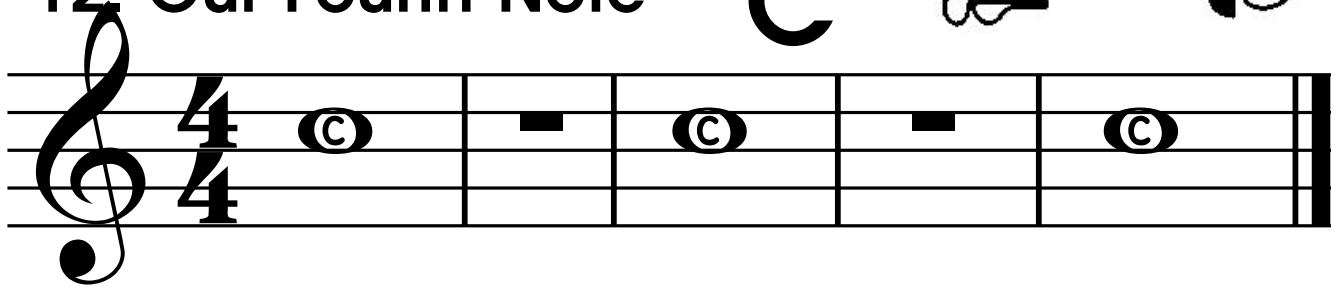
11. Puppy Dogs



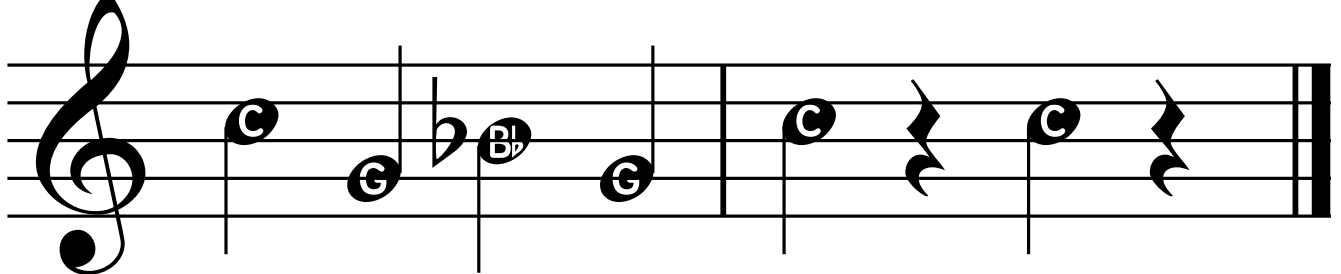
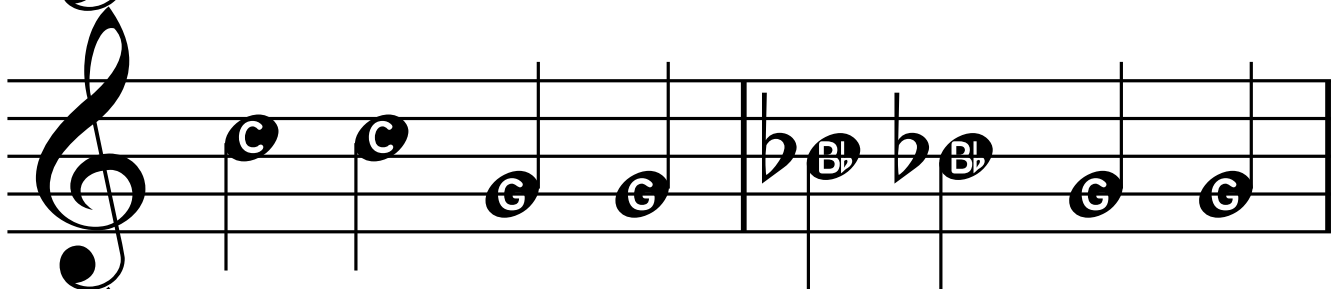
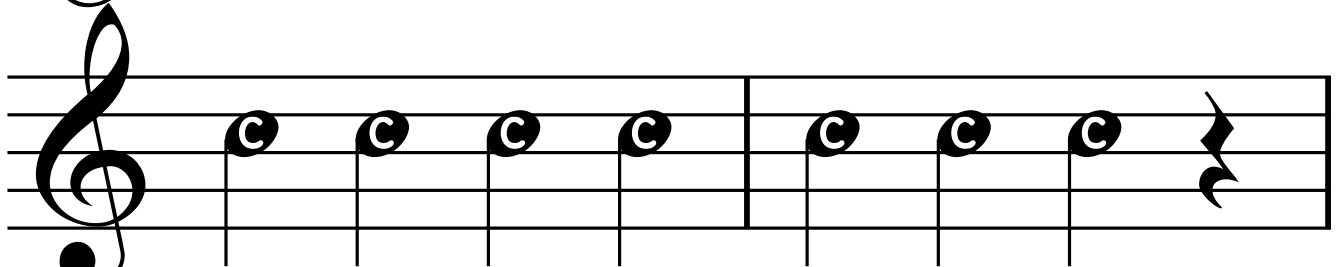
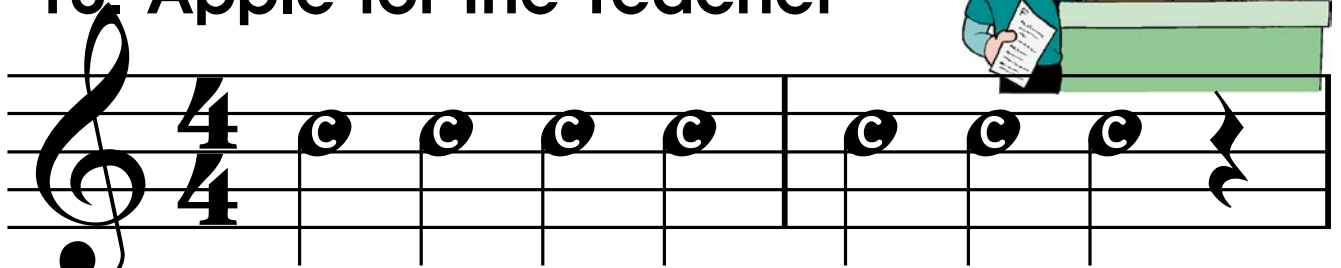
NEW NOTE
"C"



12. Our Fourth Note



13. Apple for the Teacher

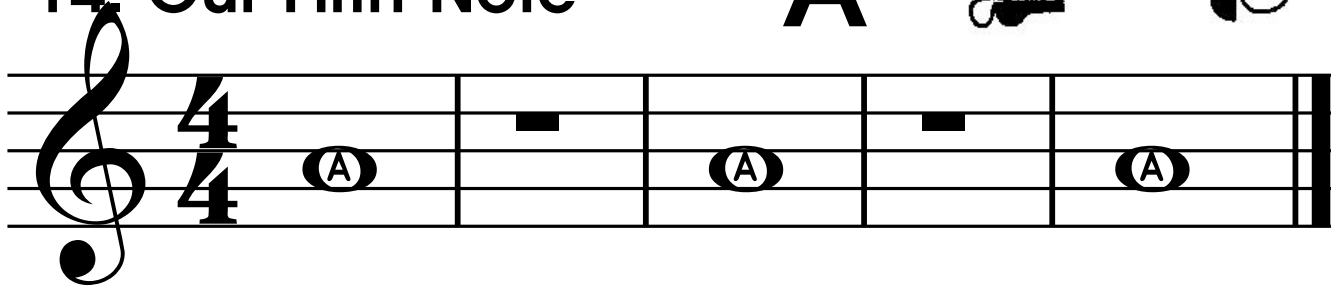


6 (Flutes should play this note separately from the brass and woodwinds.)

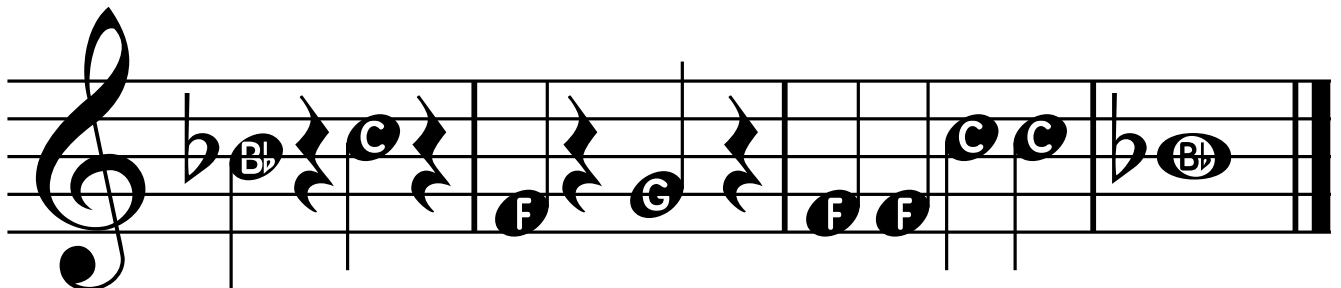
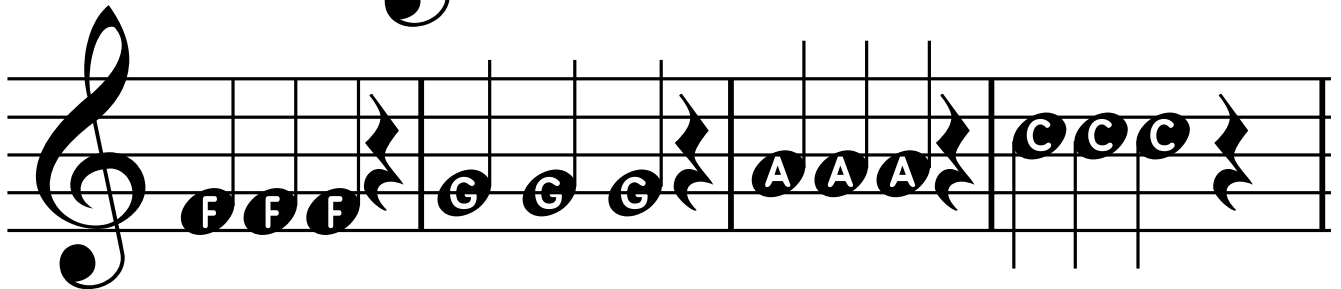
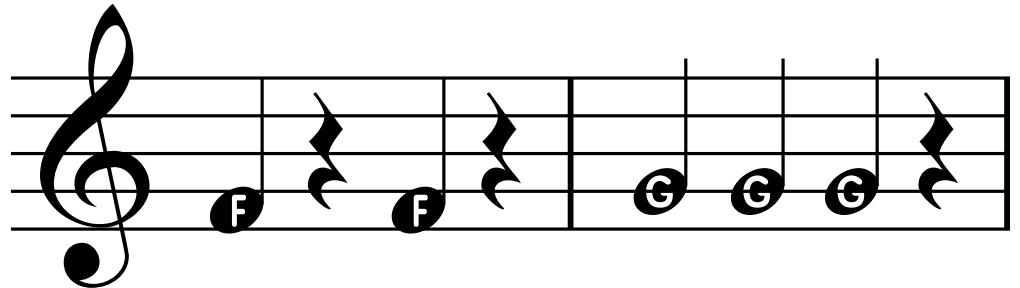
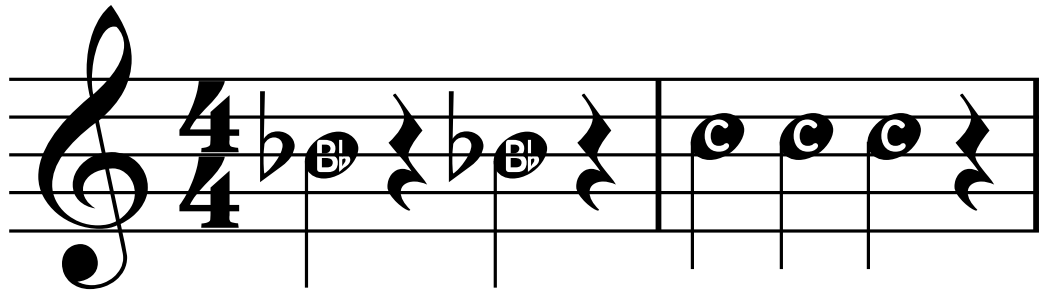
NEW NOTE 

14. Our Fifth Note

"A" 



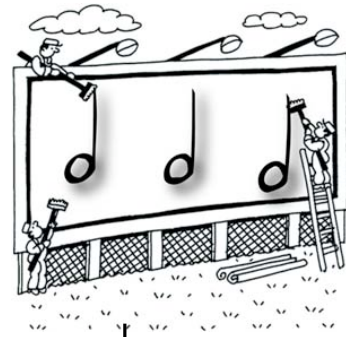
15. Bumper Cars





Half Note

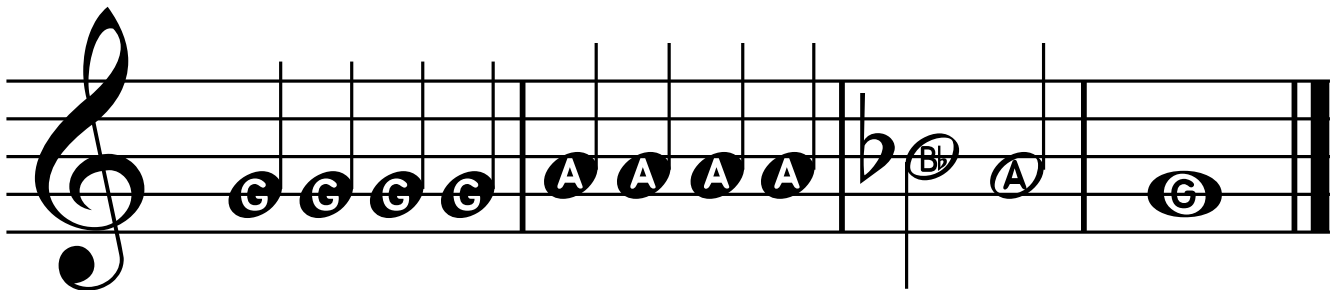
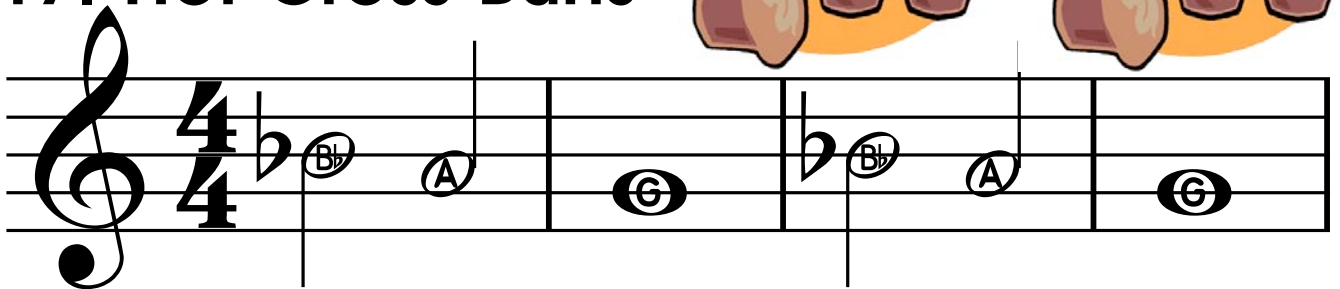
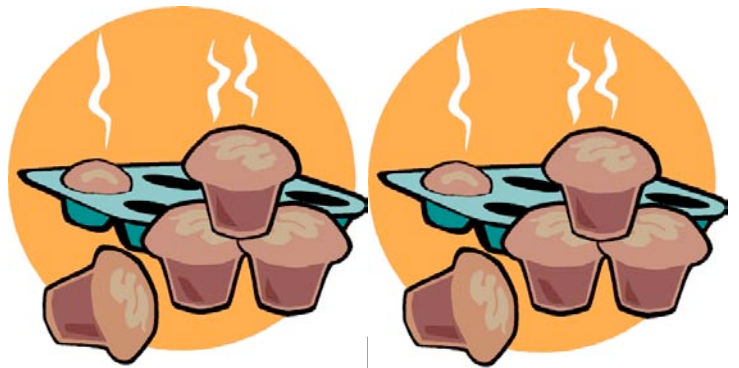
Two Beats of Sound



16. Half Notes Happen

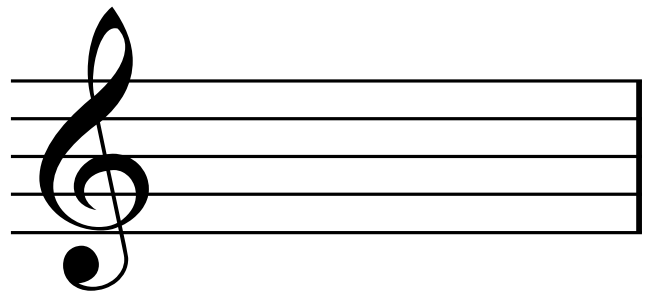


17. Hot Cross Buns



8

Notes are written on lines and spaces called the "staff".

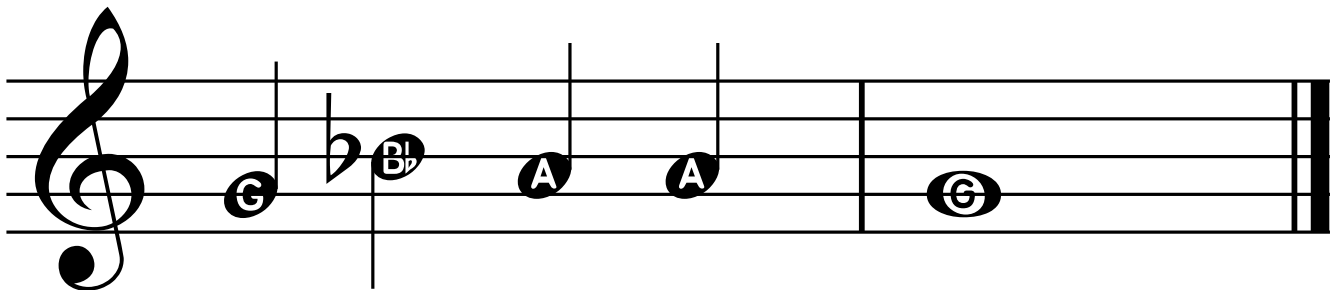
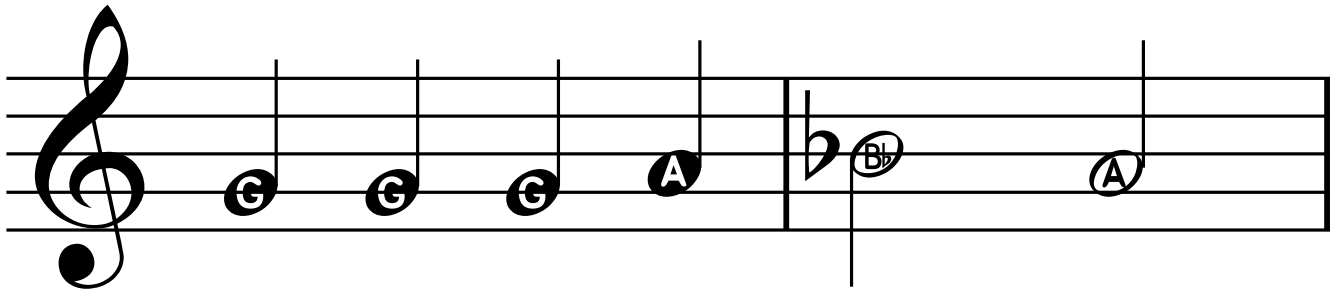
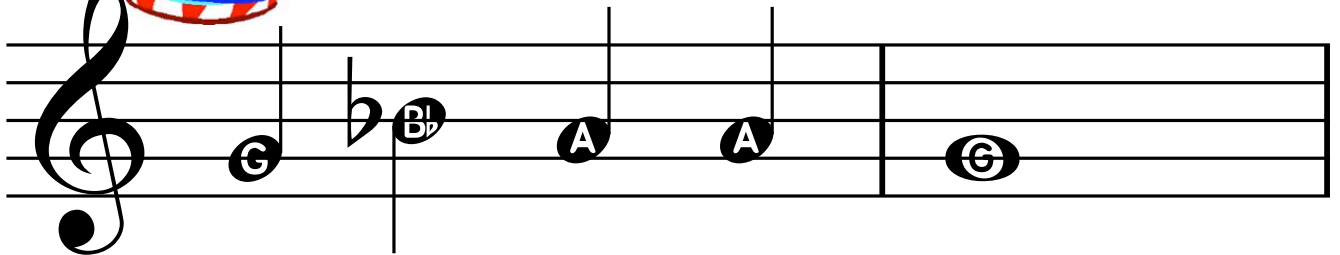
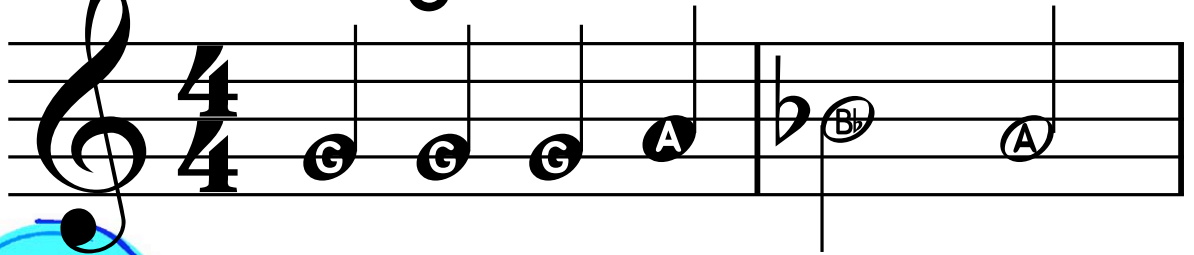


How many lines can you find?

How many spaces can you find?



18. High Dive



19. Mary Had a Little Lamb



Musical notation for "Mary Had a Little Lamb" in 4/4 time, featuring a treble clef and a key signature of one flat (Bb). The melody is written on two staves. The notes are: Bb, A, G, A, Bb, Bb, Bb, A, A, A, Bb, F, F on the first staff; and Bb, A, G, A, Bb, Bb, Bb, A, A, Bb, A, G on the second staff.

NEW NOTE
"D"

This is the "bunny ears" note called "D".



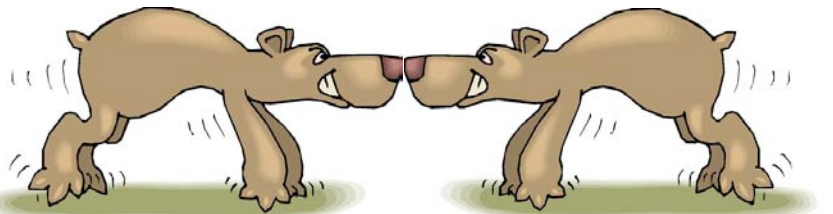
Musical notation showing the note D on a treble clef staff, positioned on the second line.



When you see this logo, follow the link for additional songs and exercises online.

www.bandfunbook.com/PAGE9

20. Bad News Bears



Musical notation for "Bad News Bears" in 4/4 time, featuring a treble clef and a key signature of one flat (Bb). The melody is written on two staves. The notes are: D, C, Bb, C, D, C, Bb, C, D, C, Bb, F, F on the first staff; and C, D, C, Bb, C, D, C, D, C, Bb, F, F on the second staff.

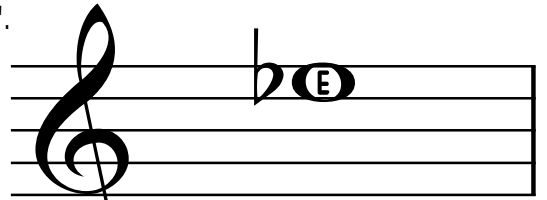
10

This is the "one eared bunny" note called "E flat".

NEW NOTE



"E FLAT"

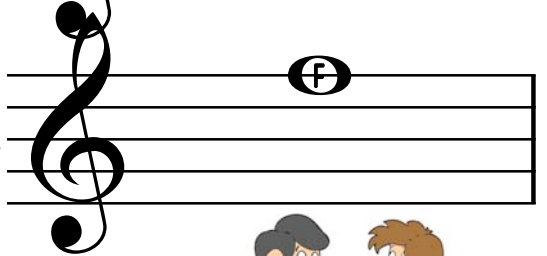


Finger this "High F" like your other "F".
Use a faster air stream.

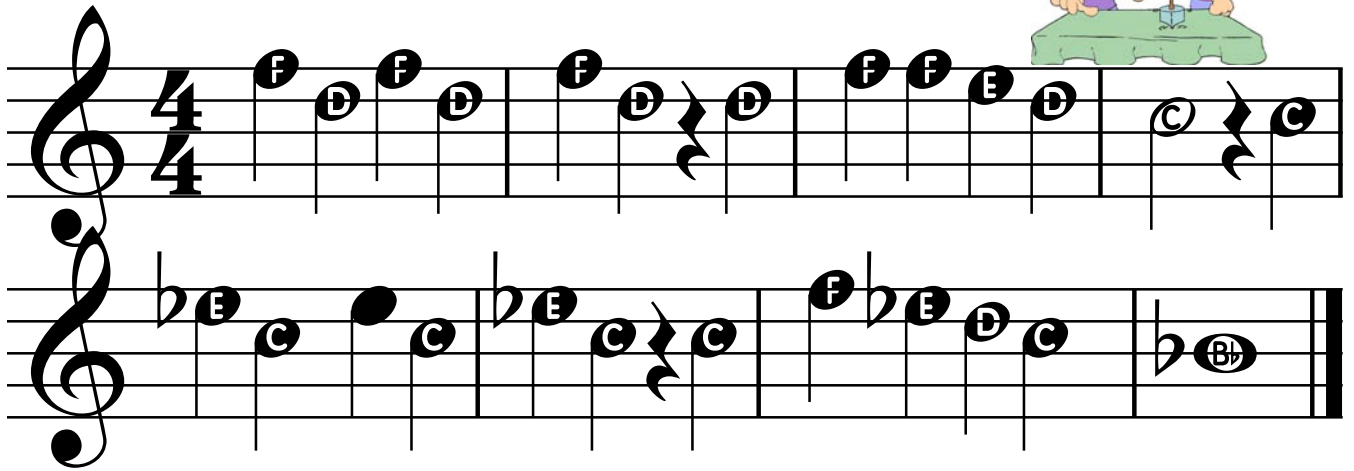
NEW NOTE



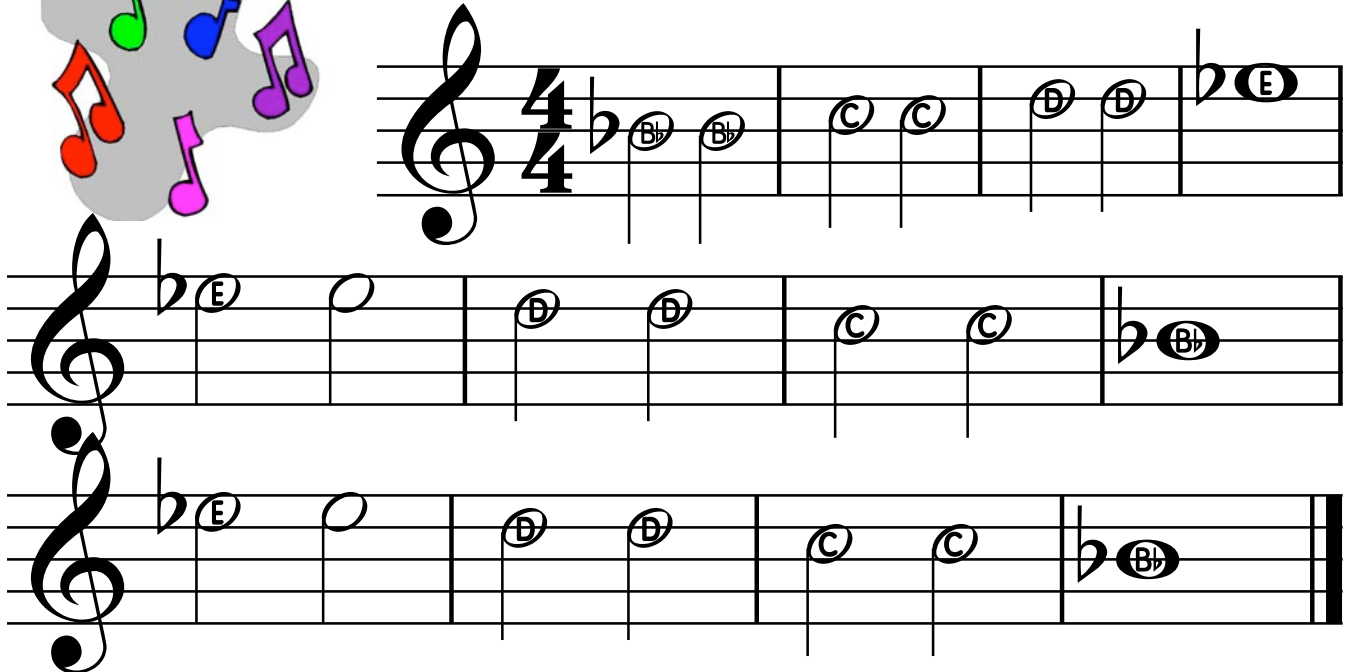
"High F"



21. Dreydl, Dreydl



22. Notes Without Letters



23. Shoo Fly, Don't Bother Me! ¹ ¹



Musical notation for 'Shoo Fly, Don't Bother Me!' in 4/4 time. The piece consists of three staves. The first two staves are in treble clef, and the third staff is in bass clef. The key signature has one flat (Bb). The melody is as follows:

Staff 1 (Treble Clef): D4 (quarter), Bb4 (quarter), C4 (half). D4 (quarter), Bb4 (quarter), C4 (half).

Staff 2 (Treble Clef): C4 (quarter), A3 (quarter), Bb4 (quarter), C4 (quarter), D4 (quarter), Bb4 (quarter).

Staff 3 (Bass Clef): D4 (quarter), Bb4 (quarter), C4 (quarter), D4 (quarter), Bb4 (quarter), C4 (quarter). F3 (quarter), F3 (quarter), F3 (quarter), E3 (quarter), D3 (quarter), C3 (quarter), Bb3 (quarter).

24. Crazy Tonguing



Musical notation for 'Crazy Tonguing' in 4/4 time. The piece consists of two staves, both in treble clef. The key signature has one flat (Bb). The melody is as follows:

Staff 1 (Treble Clef): D4 (quarter), D4 (quarter), D4 (quarter), D4 (quarter), Bb4 (quarter), E4 (quarter), E4 (quarter), E4 (quarter). D4 (quarter), D4 (quarter), D4 (quarter), D4 (quarter), C4 (quarter), C4 (quarter), C4 (quarter), C4 (quarter).

Staff 2 (Treble Clef): Bb4 (quarter), Bb4 (quarter), Bb4 (quarter), Bb4 (quarter), A4 (quarter), A4 (quarter), A4 (quarter), A4 (quarter). Bb4 (quarter), Bb4 (quarter), Bb4 (quarter), Bb4 (quarter), Bb4 (quarter).

Rhythm Fun



Eighth Notes

One eighth note gets 1/2 count.
Two eighth notes get ONE count.

A $\frac{4}{4}$

B $\frac{4}{4}$

C $\frac{4}{4}$

D $\frac{4}{4}$

E $\frac{4}{4}$





25. Yankee Doodle Cha Cha

Musical notation for 'Yankee Doodle Cha Cha' in 4/4 time, key of B-flat major. The melody consists of two staves of music. The notes are: B-flat, B-flat, C, C, D, B-flat, D, C, C, C, B-flat, B-flat, C, C, D, B-flat, C, C, C, B-flat, B-flat, B-flat, B-flat.

26. Caribbean Cruise



Musical notation for 'Caribbean Cruise' in 4/4 time, key of B-flat major. The melody consists of two staves of music. The notes are: F, G, G, G, F, C, D, F, F, F, B-flat, F, G, G, G, F, F, D, F, D, B-flat.

27. Country Hoe Down

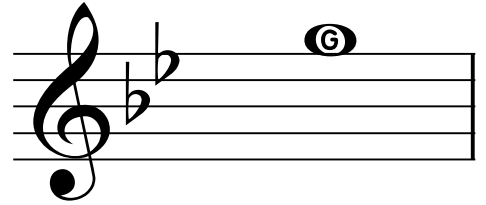


Musical notation for 'Country Hoe Down' in 4/4 time, key of B-flat major. The melody consists of two staves of music. The notes are: B-flat, B-flat, B-flat, C, C, D, B-flat, B-flat, C, D, D, D, C, B-flat, C, C, B-flat, B-flat, B-flat, C, C, D, D, D, F, D, D, C, B-flat, B-flat.

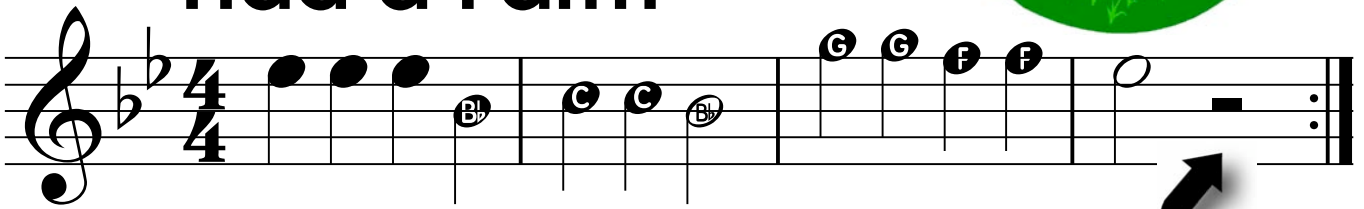


This is the "high" G. It is fingered like your other "G" but sounds an octave higher. Use a faster air stream and follow the directions from your teacher.

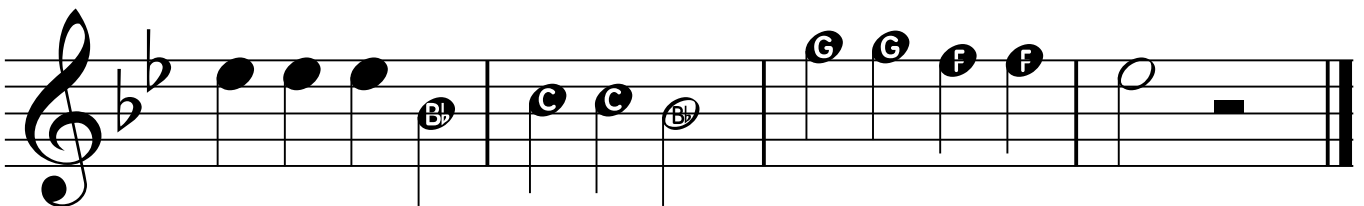
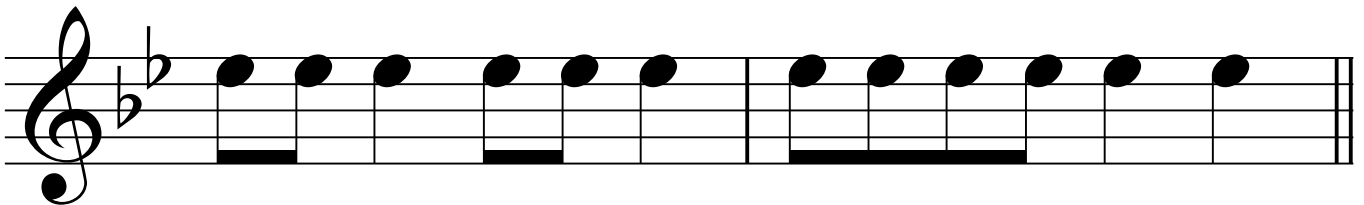
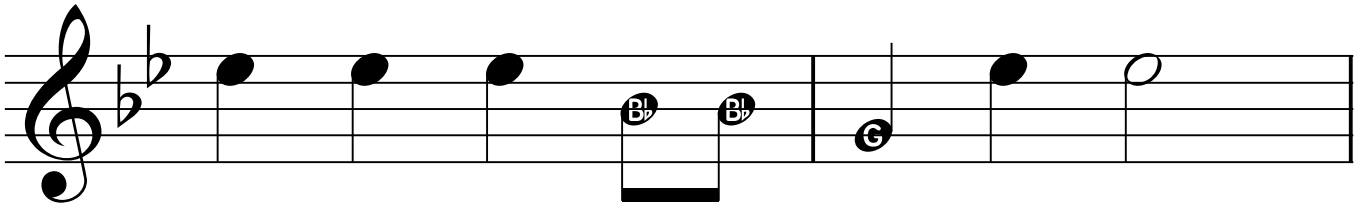
"G"

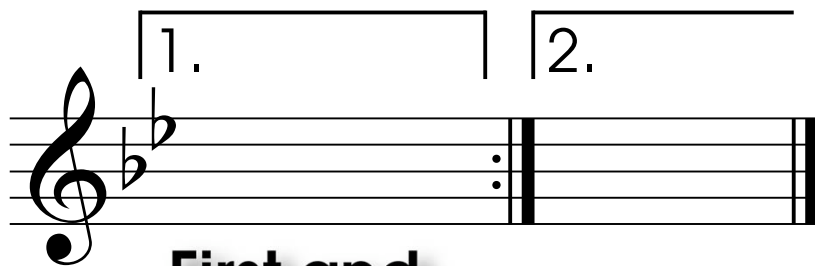


30. Old MacDonald Had a Farm



Half note rests get two beats of silence.

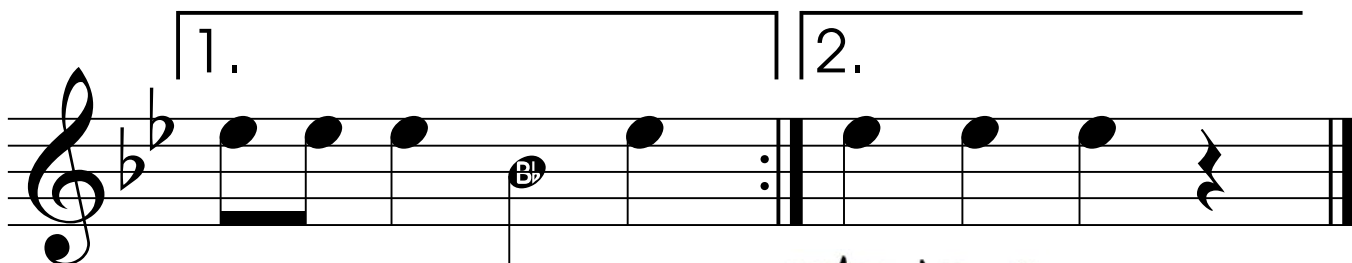
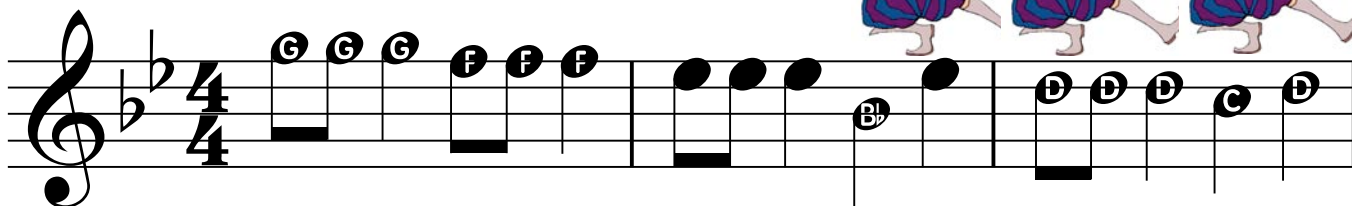




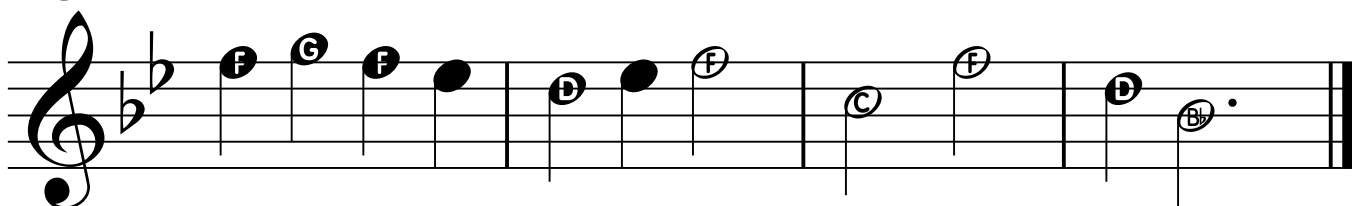
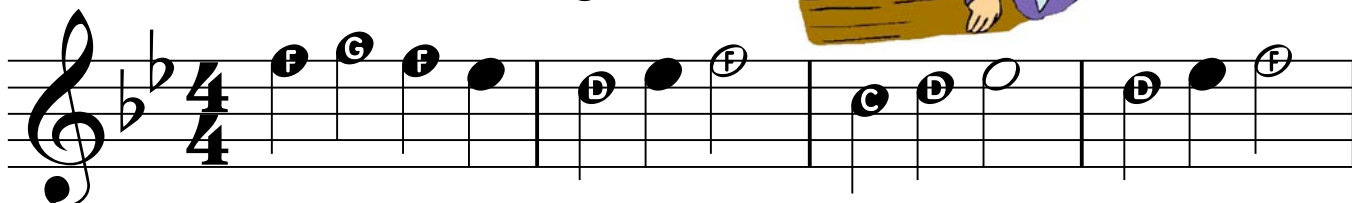
First and Second Endings

When you reach the repeat sign under the first ending, stop and go back to the beginning. When you get to the first ending again, skip it and go to the second ending.

31. Stodola Pumpa



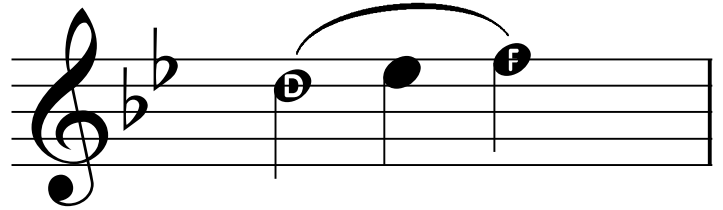
32. London Bridge





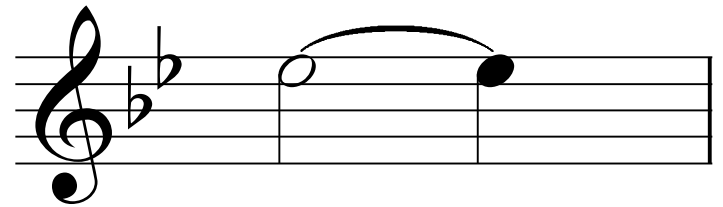
Slur

A "slur" is a curved line that connects two or more notes of different pitches. Tongue the first note and move to the next notes without tonguing. Don't stop blowing.



Tie

A "tie" is a curved line that connects two or more notes of the same pitch. Hold the note for the combined value of the notes.



33. Southern Roses

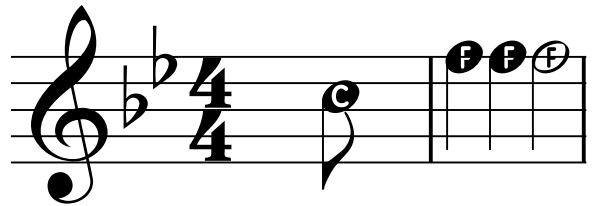


The musical score for "Southern Roses" is written in 3/4 time with a key signature of two flats (Bb and Eb). It consists of four staves of music. The first staff begins with a treble clef, a key signature of two flats, and a 3/4 time signature. The notes are Bb4 (quarter), G4 (half), and F4 (quarter). The second staff continues with D4 (quarter), E4 (quarter), F4 (quarter), G4 (half), D4 (quarter), E4 (quarter), F4 (quarter), and G4 (half). The third staff continues with Bb4 (quarter), G4 (half), D4 (quarter), and C4 (half). The fourth staff continues with D4 (quarter), E4 (quarter), F4 (quarter), G4 (half), D4 (quarter), E4 (quarter), F4 (quarter), and G4 (half), ending with two eighth notes (F4 and E4) and a double bar line.



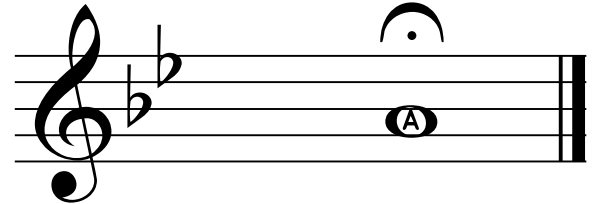
Pick-Up Notes

Note(s) that come before the first full measure of a piece of music.

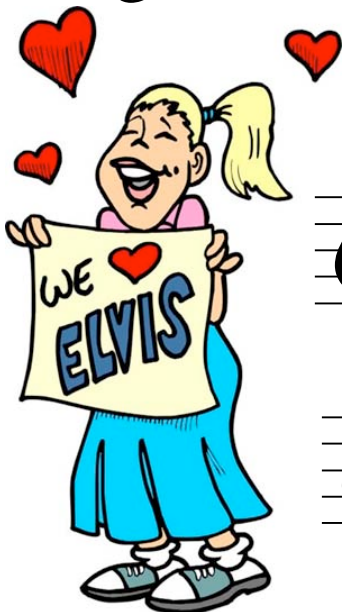
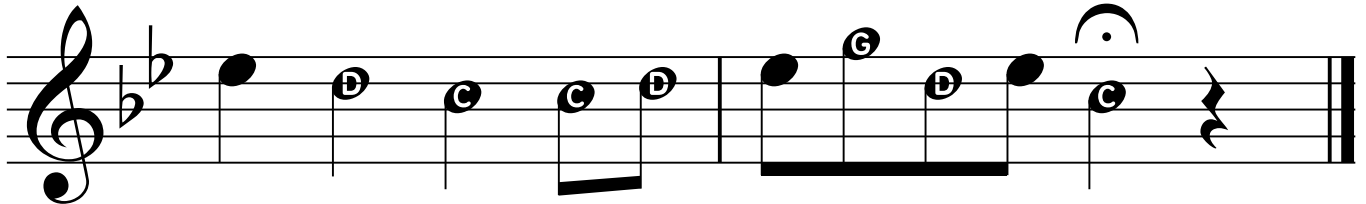
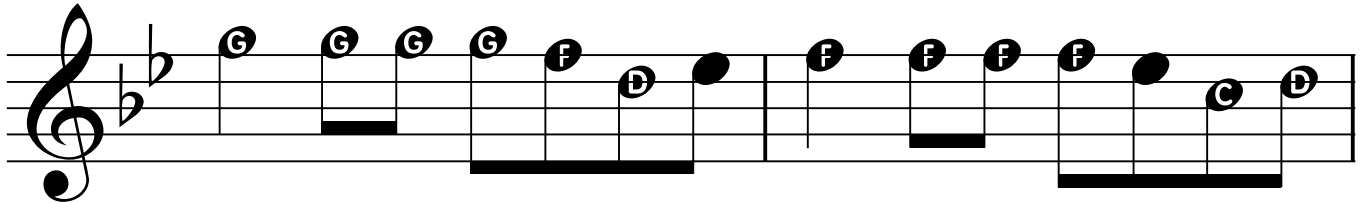
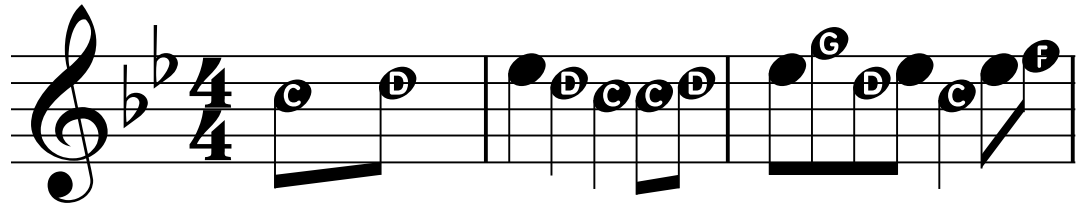


Fermata (Hold)

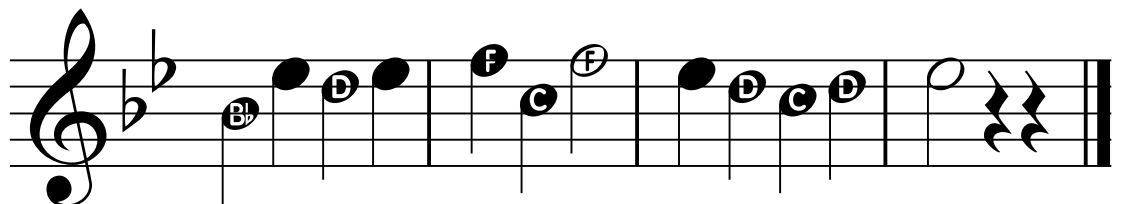
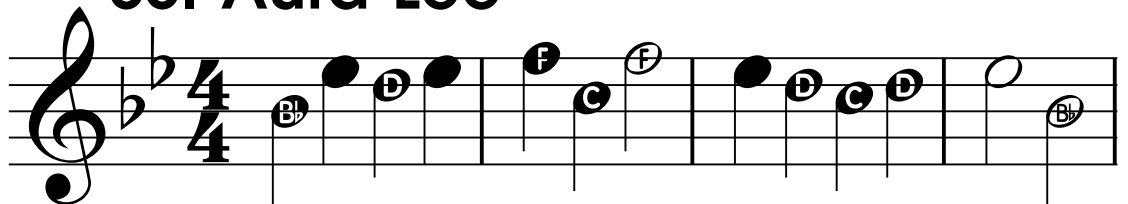
Hold (keep blowing) the note until your director tells you to stop,



34. Snake Charmer

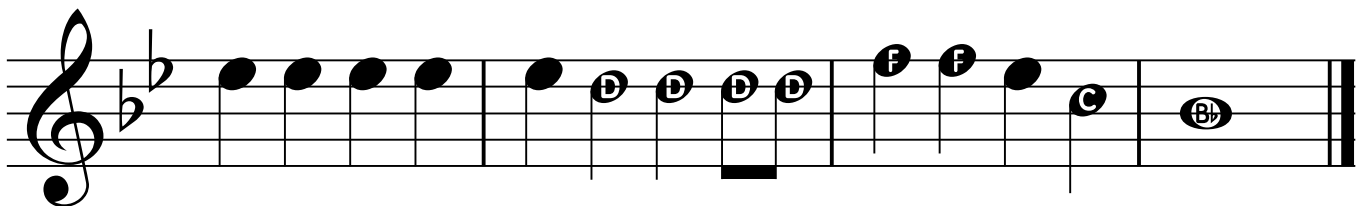
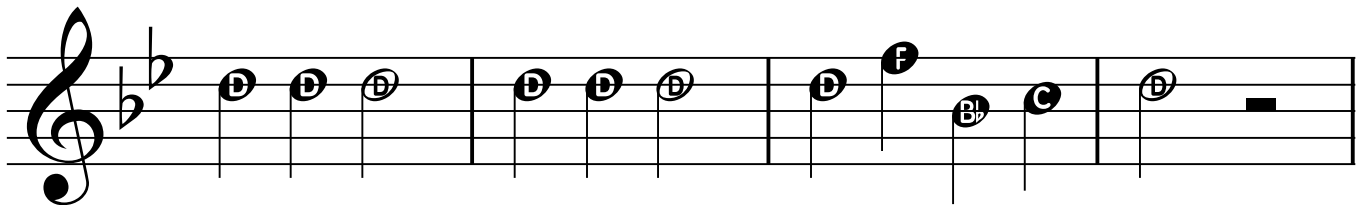
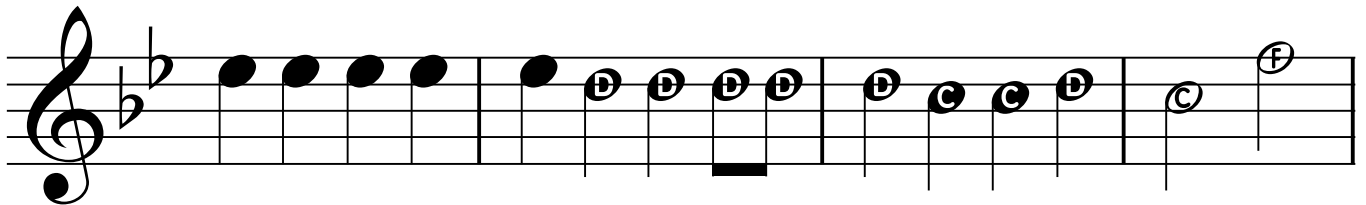
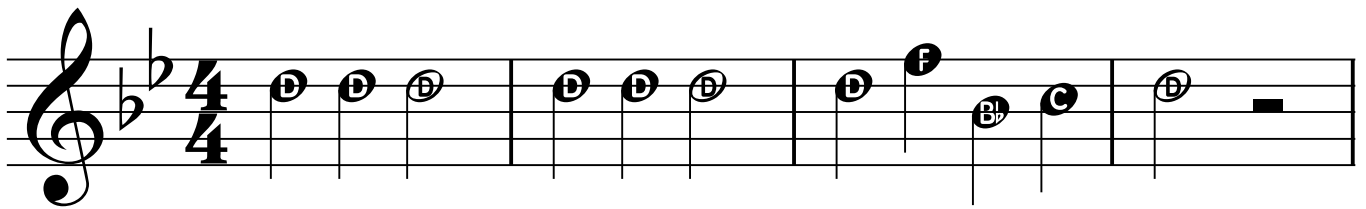


35. Aura Lee





36. Jingle Bells





D.C. al Fine

Go back to the beginning and play until "Fine".

37. Twinkle, Twinkle, Little Star

Fine

D. C. al Fine



D.S. al Fine

Go back to the sign and play until "Fine".



The "sign"



38. Ode to Joy

Fine

Fine

D.S. al Fine



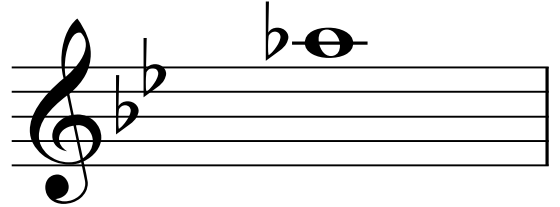
Flat Sign



NEW NOTE

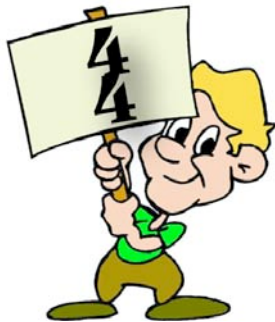
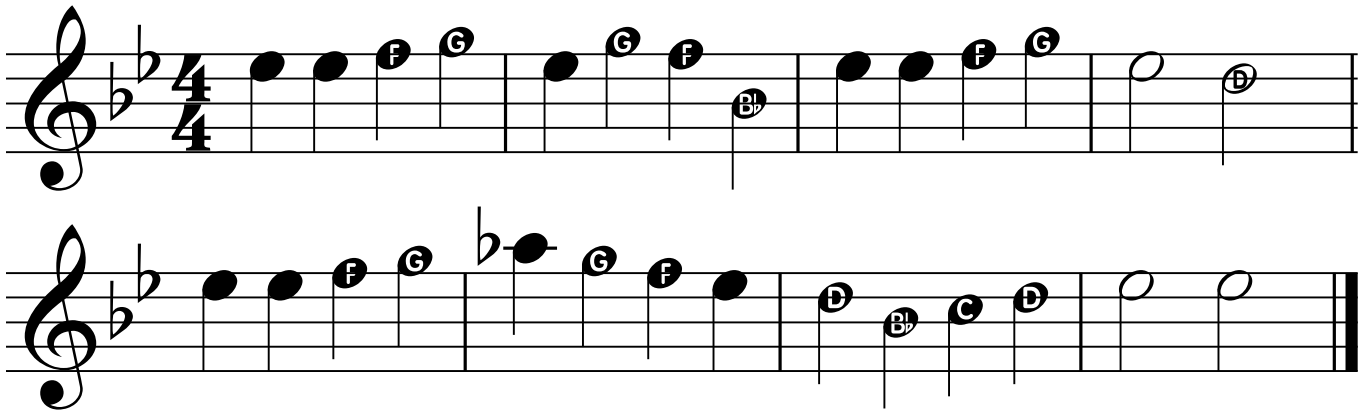


"A Flat" 21



A "flat" lowers the note one half step. It stays in effect for the entire measure.

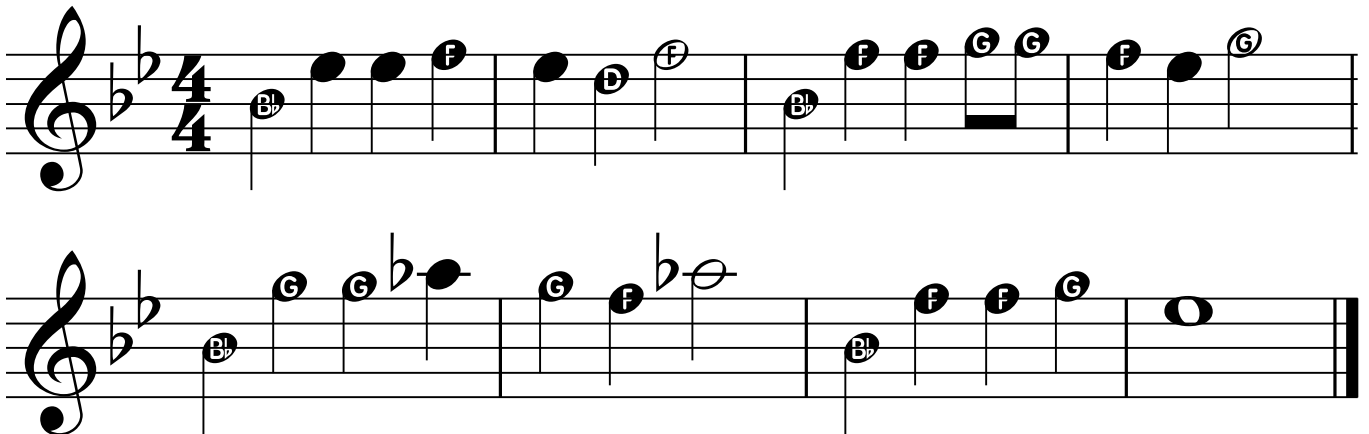
39. Yankee Doodle



Time Signature

A "time signature" tells you how many beats there are in each measure of music.

40. Little Cabin in the Wood





Natural Sign



NEW NOTE

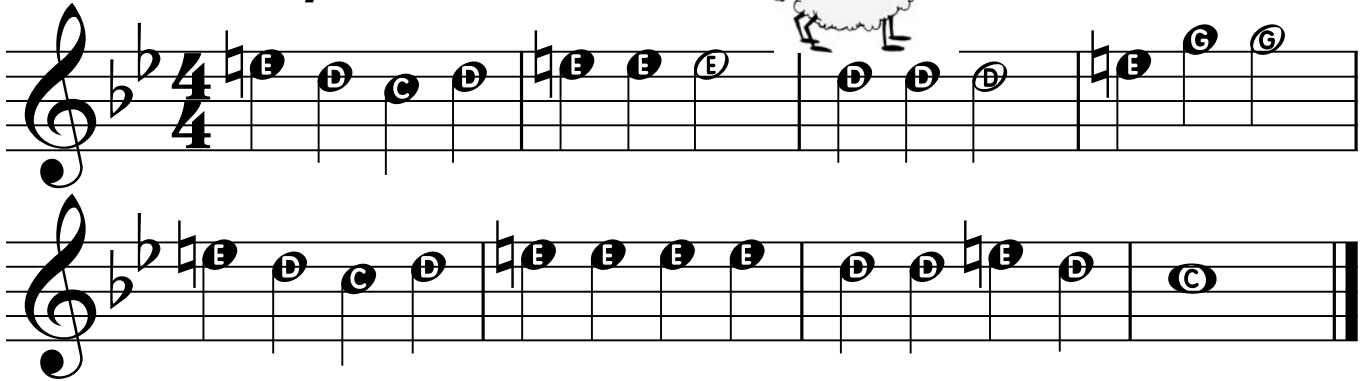


"E Natural"

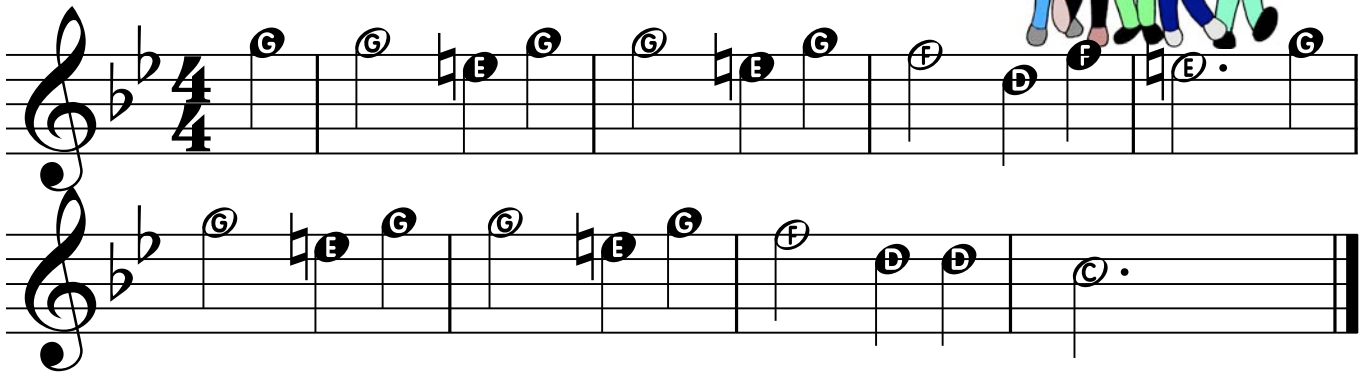
A "natural" cancels a sharp or flat.
It remains in effect for the entire measure.



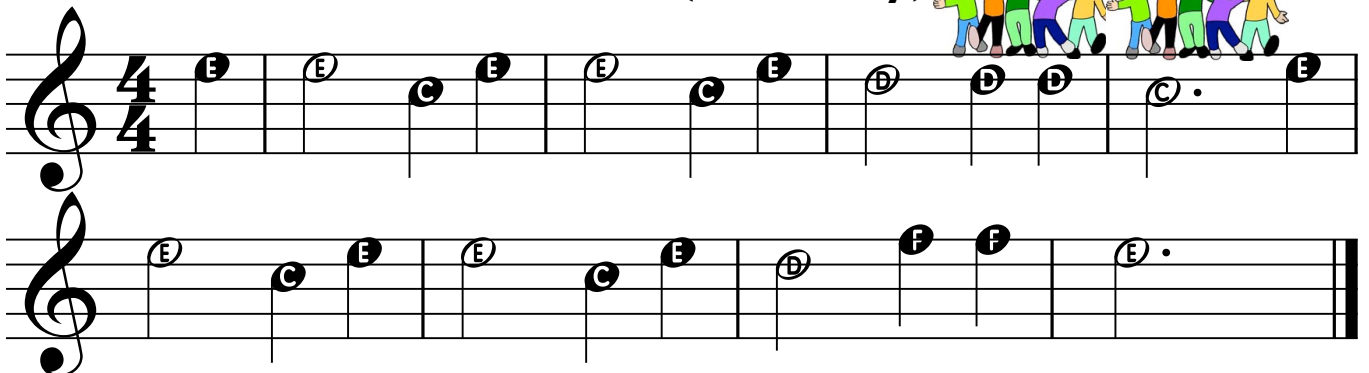
43. Mary's Other Lamb



44. O Come Little Children (Melody)



45. O Come Little Children (Harmony)



46. Jolly Old St. Nick



Musical notation for "Jolly Old St. Nick" in 2/4 time. The first staff shows the main melody with notes G, G, G, G, F, F, F, and G. The second staff shows a first ending (1.) and a second ending (2.) with notes Bb, Bb, D, F, G, F, F, G, and Bb.

The Israeli National Anthem, HATIKVA, means "The Hope." Hatkiva expresses the hope of the Jewish people that they would someday return to the land of their forefathers.



47. Hatikvah

Musical notation for "Hatikvah" in 4/4 time. The first staff shows the main melody with notes G, D, F, G, G, G, G, and G. The second staff shows the continuation of the melody with notes F, F, D, D, D, C, D, and C.

48. Slippery Slurs



Musical notation for "Slippery Slurs" in 4/4 time. The first staff shows the main melody with notes F, D, Bb, C, A, Bb, D, F, D, C, and Bb. The second staff shows the continuation of the melody with notes F, D, C, Bb, D, C, and Bb.



Round

Playing the same music beginning at different times.

49. Are You Sleeping?

a Four Part Round



Dynamics

p

Piano

Play with a soft volume.

f

Forte

Play with a full volume.

50. Minka, Minka

51. Rollin' Back and Forth

Your left hand remains the same.
Your right hand does all the work.



Dotted Quarter Note

A dotted quarter note gets one and one half counts.



52. America

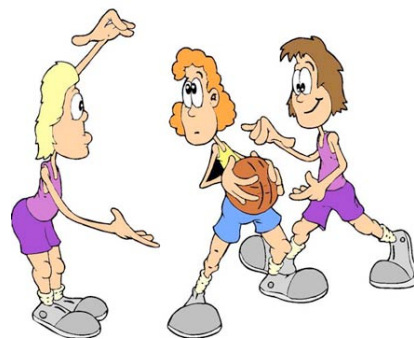


The musical score for 'America' is written in 3/4 time and consists of four staves. The first staff begins with a piano (*p*) dynamic and contains notes B \flat , B \flat , C, A., B \flat , C, D, D, D, D., C, B \flat . The second staff continues with notes C, B \flat , A, B., F, F, F, F., D. The third staff features notes D., E, F, G, D, C, D, D, C, B \flat . The fourth staff concludes with notes D., E, F, G, D, C, B \flat . Dynamics include piano (*p*) and forte (*f*).



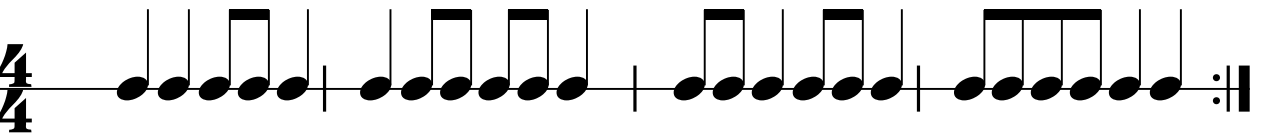
www.bandfunbook.com/PAGE26

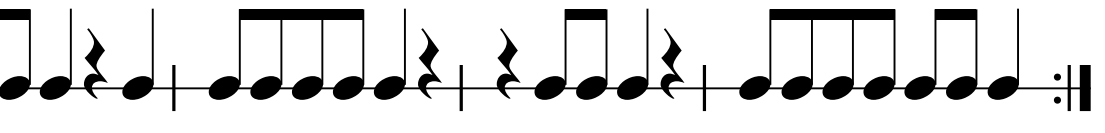
53. Technical Foul

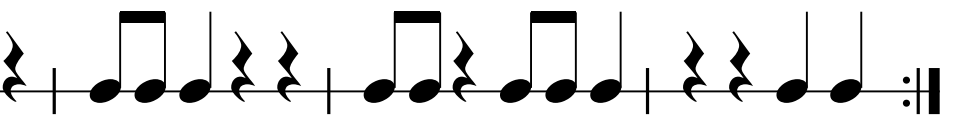


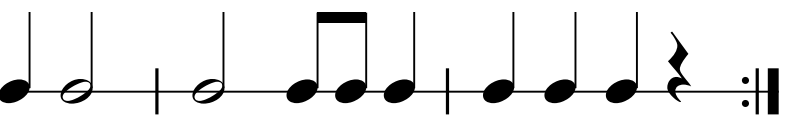
The musical score for 'Technical Foul' is written in 4/4 time and consists of two staves. The first staff contains notes F., F, F, F, F, F, D., D, D, D, D, D, D, C., C, C. The second staff contains notes B \flat , B \flat , B \flat , B \flat , B \flat , B \flat , C, C, C, C, C, C., C, D, D, D, D, C., C, B \flat , B \flat , B \flat .

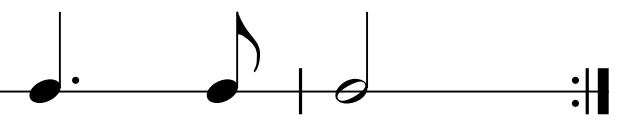
Rhythm Fun

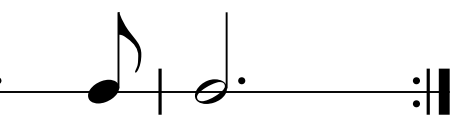
A $\frac{4}{4}$ 

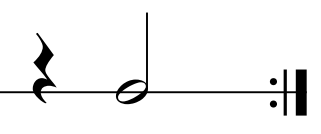
B $\frac{4}{4}$ 

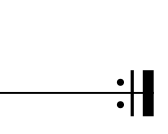
C $\frac{4}{4}$ 

D $\frac{4}{4}$ 

E $\frac{2}{4}$ 

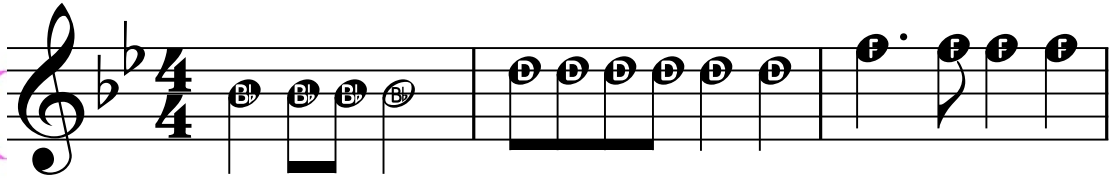
F $\frac{3}{4}$ 

G $\frac{3}{4}$ 

H $\frac{3}{4}$ 

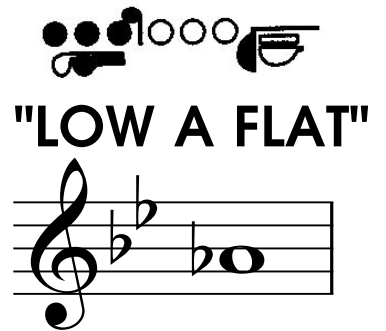


54. Rhythm Wreck

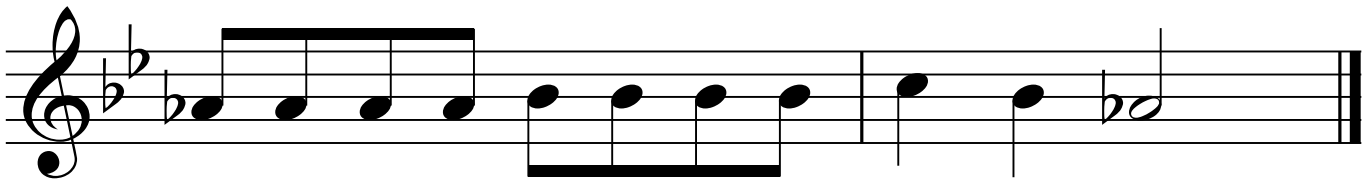
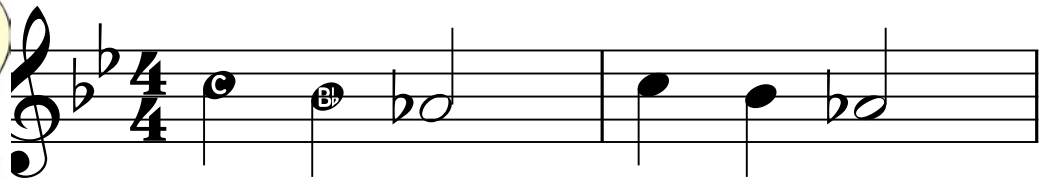


NEW NOTE

Low "A" flat is fingered the same as your other "A" flat. Blow easy.

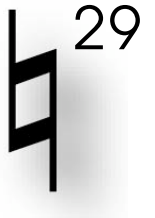


55. More Hot Cross Buns



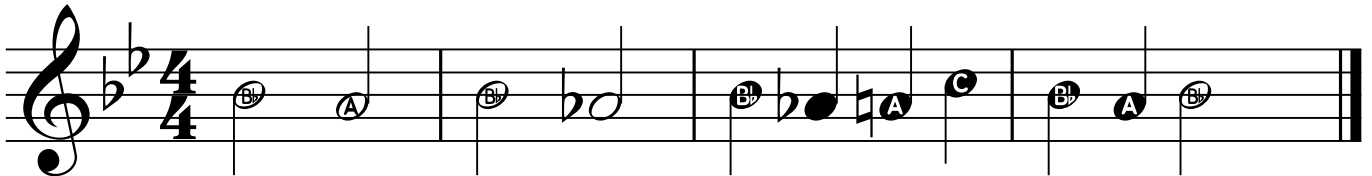


Natural Sign

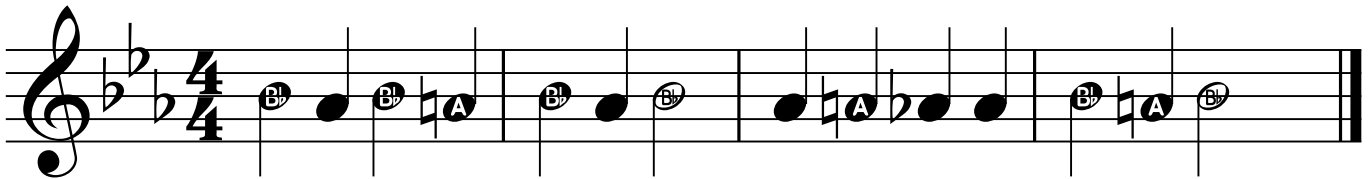


A natural sign cancels a flat or a sharp. It remains in effect for the entire measure.

56. It Just Comes Naturally



57. Don't Be Fooled



Accent Sign



An accent sign tells you to play the note with more emphasis.



Eighth Rest

An eighth rest gets one half beat of silence.



58. Go, Fight, Win!



30

59. Bach Minuet



60. Rueben and Rachel



61. When Love Is Kind





Dynamics

mp

Mezzo Piano

Play with a medium soft volume. ³¹

mf

Mezzo Forte

Play with a medium loud volume.

62. Mexican Hat Dance



Musical notation for the first staff of 'Mexican Hat Dance'. It is in 3/4 time and B-flat major. The notes are B-flat, B-flat, D, F, D, B-flat, A, G, F. Dynamics are *mp* for the first six notes and *mf* for the last three notes.


Musical notation for the second staff of 'Mexican Hat Dance'. It features a first ending (1.) and a second ending (2.). The notes for the first ending are A, A, C, C, A, B-flat, G, F. The notes for the second ending are B-flat, A, B-flat. Dynamics are *mp* for the first ending, *mf* for the first ending and the start of the second ending, and *f* for the rest of the second ending.

63. Blues Dues

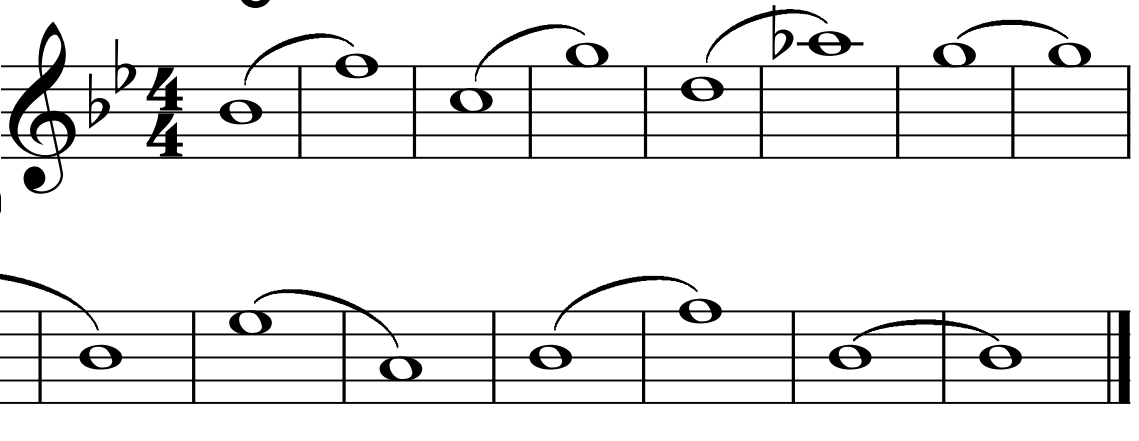


Musical notation for 'Blues Dues', consisting of four staves in 4/4 time and B-flat major. The notes across the staves are: Staff 1: B-flat, D, F, G, B-flat, G, F, D, B-flat, D, F, G; Staff 2: B-flat, G, F, B-flat, F, G, G, F; Staff 3: B-flat, D, F, G, B-flat, G, F, F, F, F, F; Staff 4: B-flat, D, F, G, B-flat, G, F.

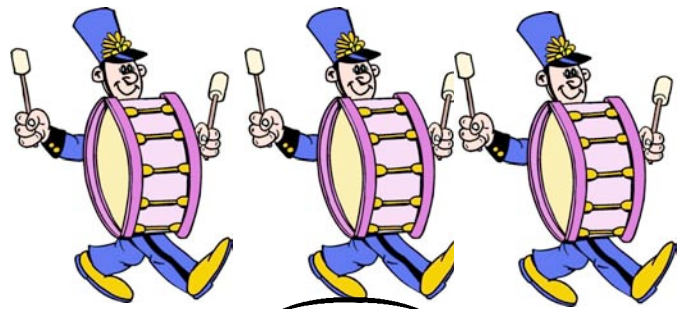
64. Big Breath Slurs



64. Big Breath Slurs

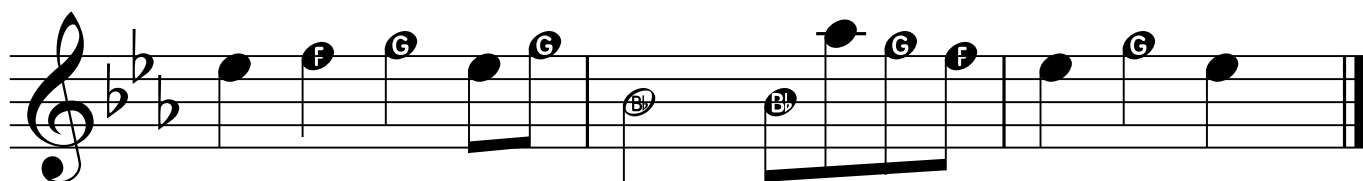
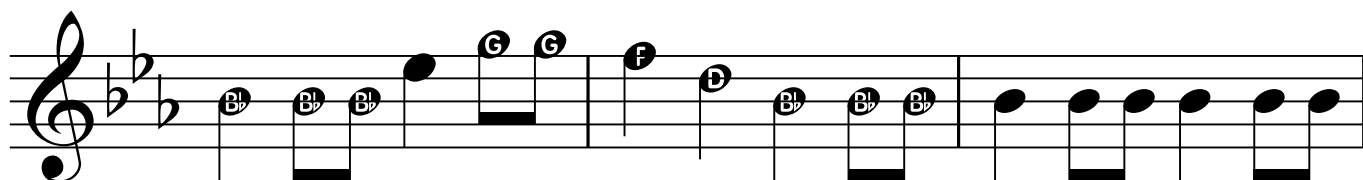
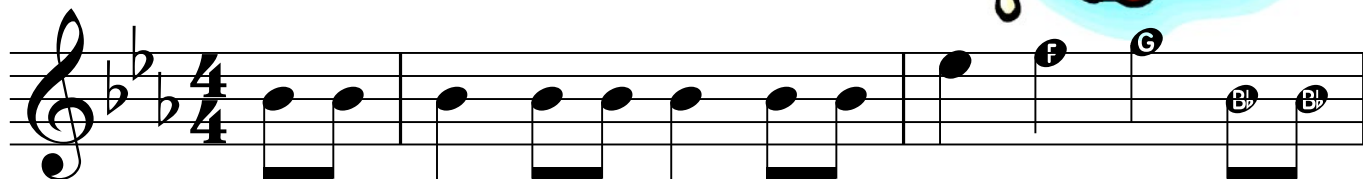


65. When the Saints Go Marchin' In

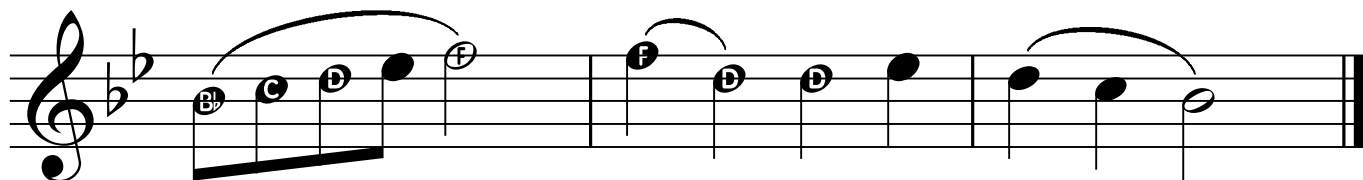
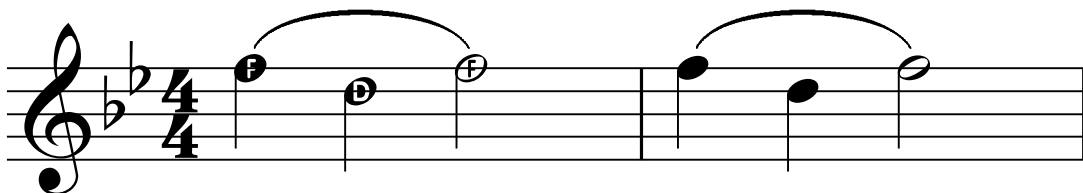





66. William Tell Overture

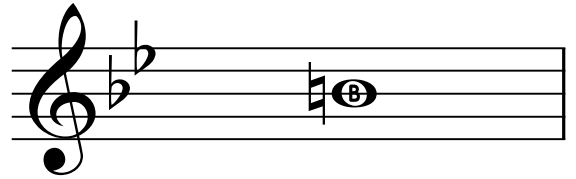


67. This Old Man

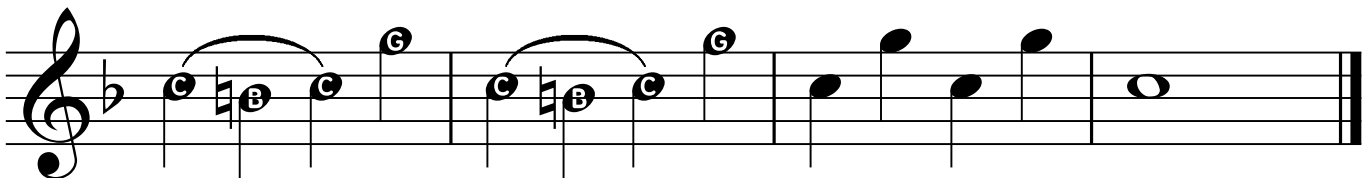
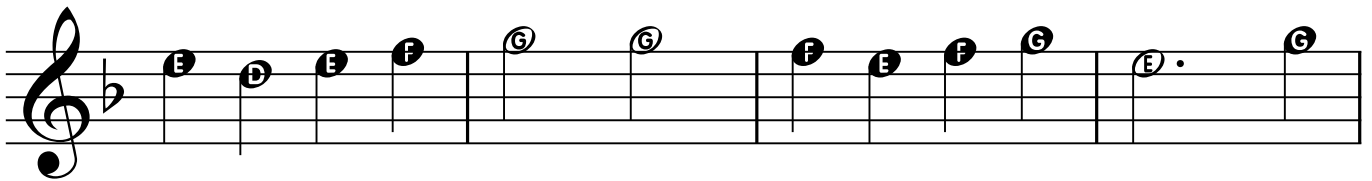
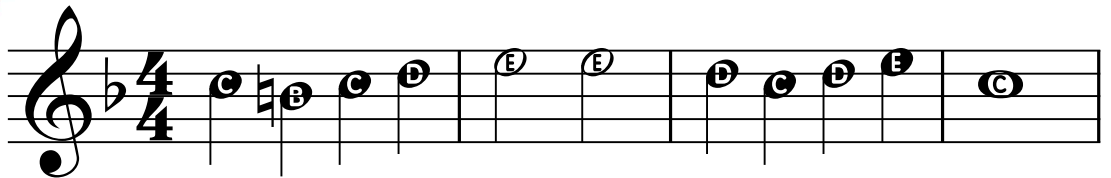


NEW NOTE

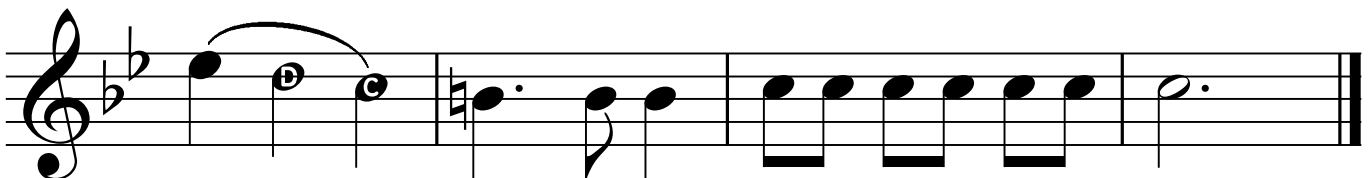
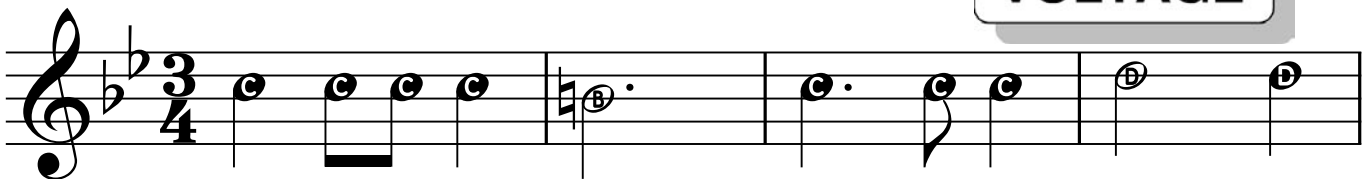
B NATURAL



68. Sweetly Sings the Donkey



69. Danger! Tricky Rhythms





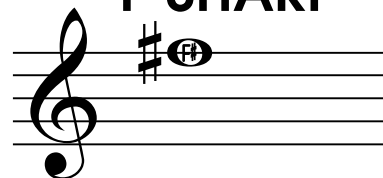
Sharp Sign



NEW NOTE



F SHARP



A "SHARP" raises a note one half step.

It remains in effect for the entire measure.

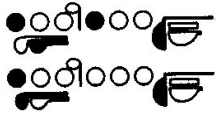
72. Barcarolle

Fun Work

Write in the letters to these notes.

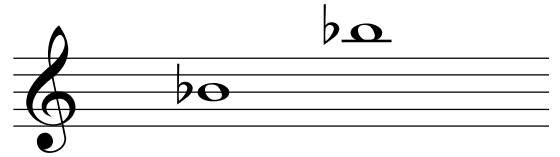


Special Page for FLUTES

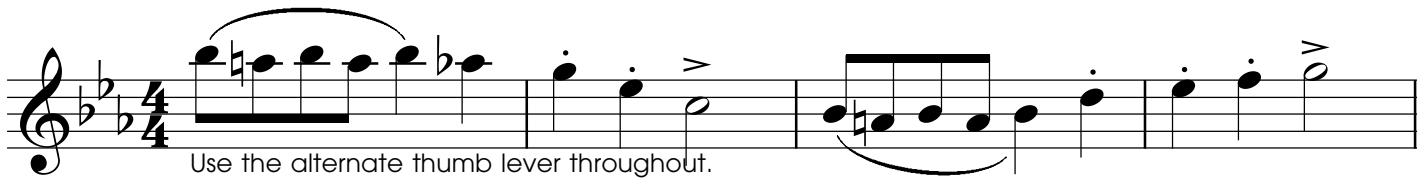


The Alternate "B flat" Fingering

Use the second fingering indicated for the alternate way to play the "B flat".



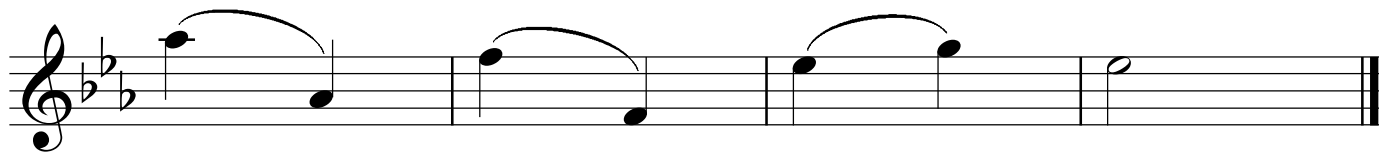
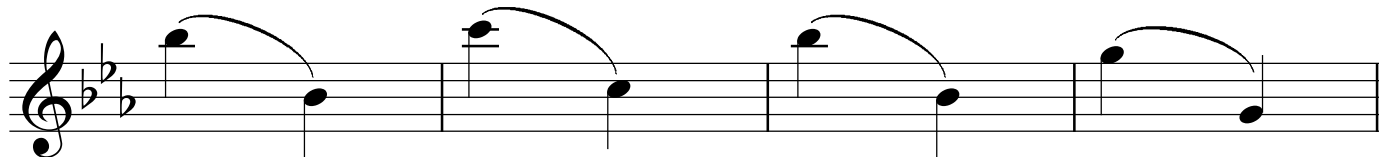
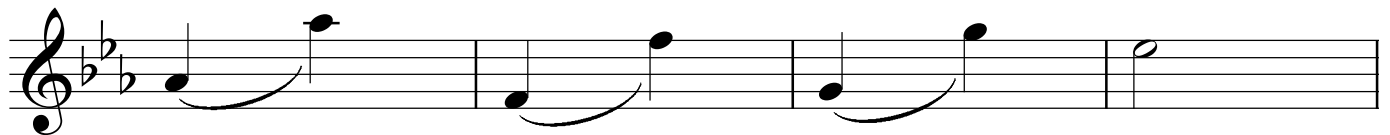
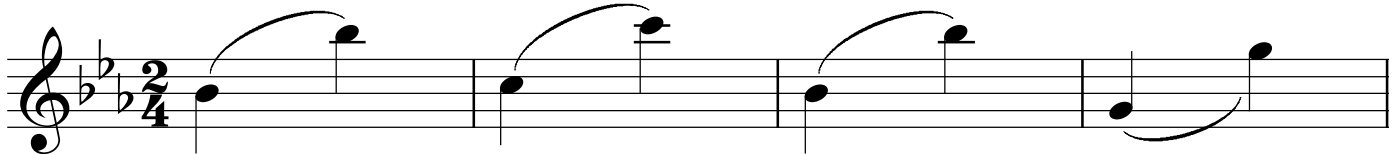
The Alternate "B flat" Fingering Exercise



Use the alternate thumb lever throughout.



Octave Workout



74. Can Can



Musical notation for the song "Can Can". It is written in 2/4 time with a key signature of two flats (B-flat and E-flat). The melody consists of three staves. The first staff begins with a whole note chord. The second staff continues the melody with eighth and sixteenth notes. The third staff concludes with a first ending (marked "1.") and a second ending (marked "2.") leading to a double bar line.

75. La Bamba

Musical notation for the song "La Bamba". It is written in 4/4 time with a key signature of two flats (B-flat and E-flat). The melody is spread across four staves. The first staff starts with a quarter note chord followed by a series of sixteenth notes. The second and third staves continue the intricate melody with many sixteenth notes and rests. The fourth staff provides a bass line with chords and single notes.

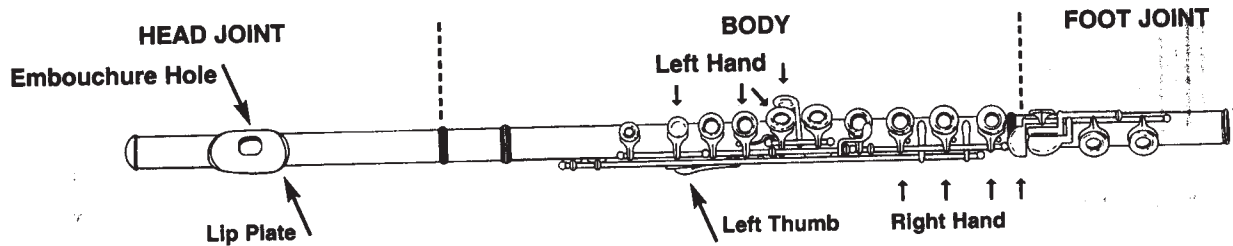
76. Simple Gifts

Musical score for "Simple Gifts" in 4/4 time, G major. The score consists of three staves of music. The first staff begins with a treble clef, a key signature of one sharp (F#), and a 4/4 time signature. The melody is written in a simple, folk-like style with eighth and quarter notes, often beamed together. The second and third staves continue the melody, featuring various note values and rests, ending with a double bar line.

77. Amazing Grace

Musical score for "Amazing Grace" in 3/4 time, G major. The score consists of four staves of music. The first staff begins with a treble clef, a key signature of one sharp (F#), and a 3/4 time signature. The melody is written in a simple, folk-like style with quarter and eighth notes, often beamed together. The second and third staves continue the melody, featuring various note values and rests, ending with a double bar line. The fourth staff continues the melody, ending with a double bar line.

Flute Fingering Chart



C C# D \flat D D# E \flat E F

This staff shows the notes C, C#, D \flat , D, D#, E \flat , E, and F. Each note is represented by a whole note on a treble clef staff, with a corresponding fingering diagram below it. The fingering diagrams use circles to represent fingers: 1 (index), 2 (middle), 3 (ring), 4 (pinky), 5 (thumb), and 6 (left pinky).

F# G \flat G G# A \flat A A# B \flat B C

This staff shows the notes F#, G \flat , G, G#, A \flat , A, A#, B \flat , B, and C. Each note is represented by a whole note on a treble clef staff, with a corresponding fingering diagram below it. Some notes have an 'or' alternative fingering diagram shown below the primary one.

C# D \flat D D# E \flat E F \flat F F# G \flat

This staff shows the notes C#, D \flat , D, D#, E \flat , E, F \flat , F, F#, and G \flat . Each note is represented by a whole note on a treble clef staff, with a corresponding fingering diagram below it. Some notes have an 'or' alternative fingering diagram shown below the primary one.

G G# A \flat A A# B \flat B C

This staff shows the notes G, G#, A \flat , A, A#, B \flat , B, and C. Each note is represented by a whole note on a treble clef staff, with a corresponding fingering diagram below it. Some notes have an 'or' alternative fingering diagram shown below the primary one.

C# D \flat D D# E \flat E F F# G \flat G

This staff shows the notes C#, D \flat , D, D#, E \flat , E, F, F#, G \flat , and G. Each note is represented by a whole note on a treble clef staff, with a corresponding fingering diagram below it. Some notes have an 'or' alternative fingering diagram shown below the primary one.