

Welcome to the wonderful world of trombone playing. Your teacher has shown you how to hold your instrument and make a sound on the mouthpiece.



Let's play our first song!



**1. Our First Note** NEW NOTE 4th Position "D"

**2. Our Second Note** NEW NOTE 3rd Position "E flat"

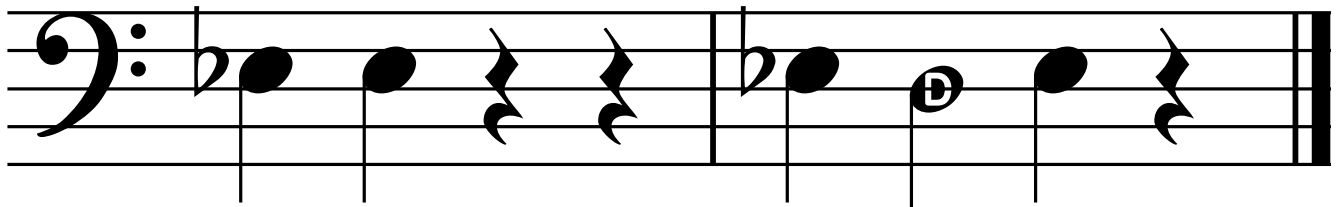
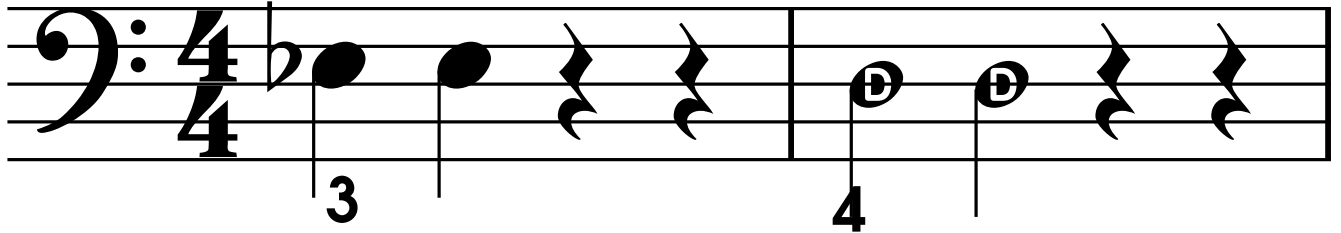
**3. Three's a Crowd**


**4. Four In a Row**



-  Quarter notes get one beat of sound.
-  Whole notes get four beats of sound.

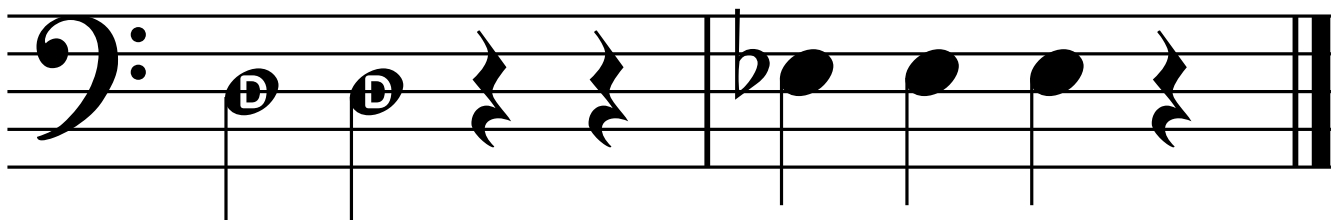
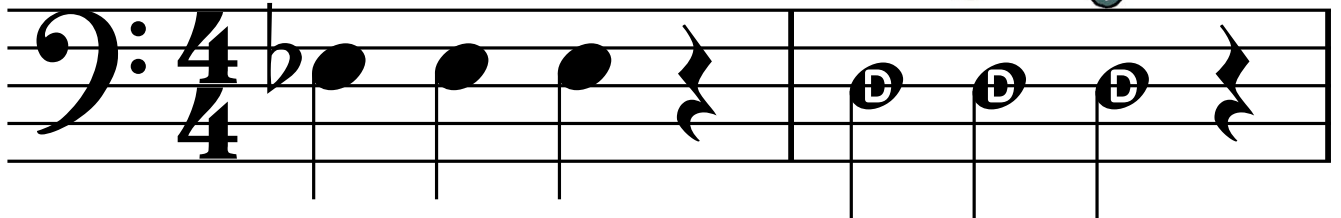
### 5. A Funny Pair



-  Quarter note rests get one beat of silence.

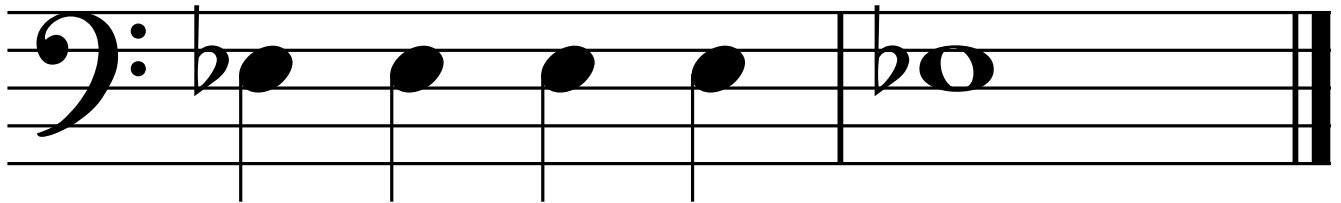
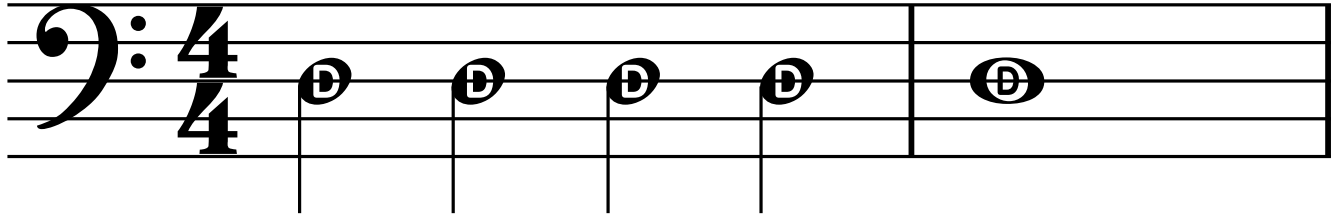


### 6. Skate Board Sam

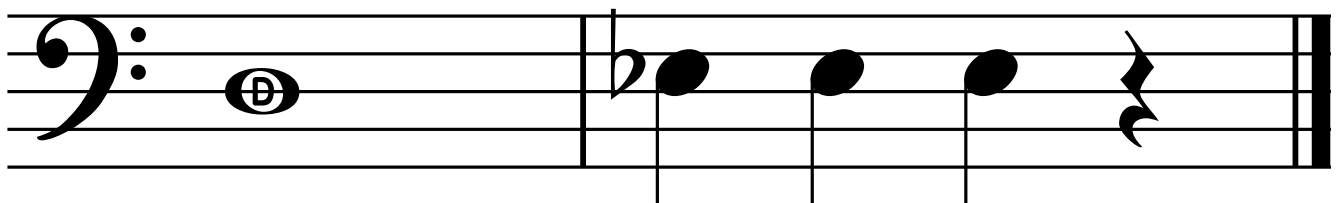
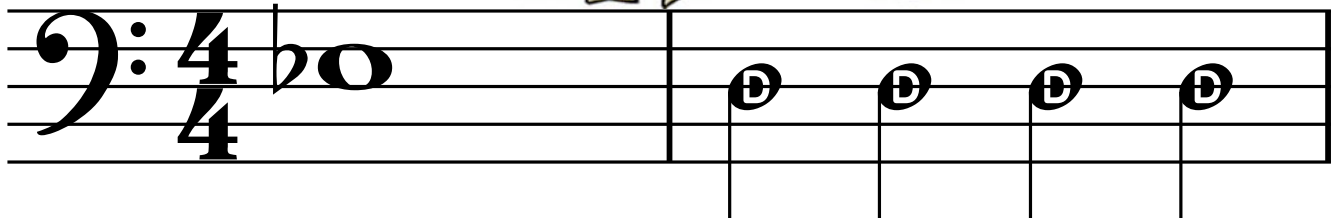




### 7. Catch That Note



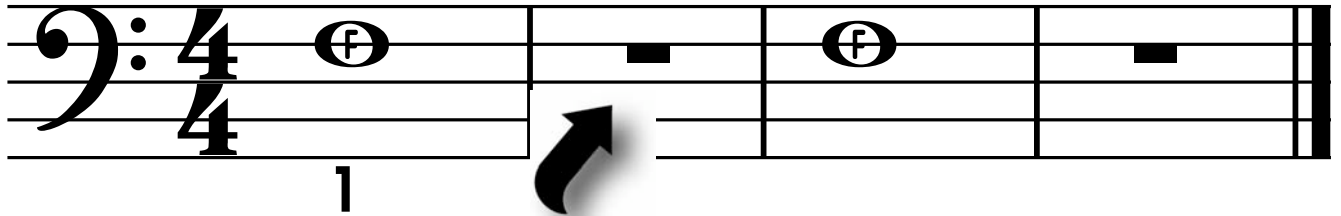
### 8. Keep On Blowin'



# 9. Our Third Note

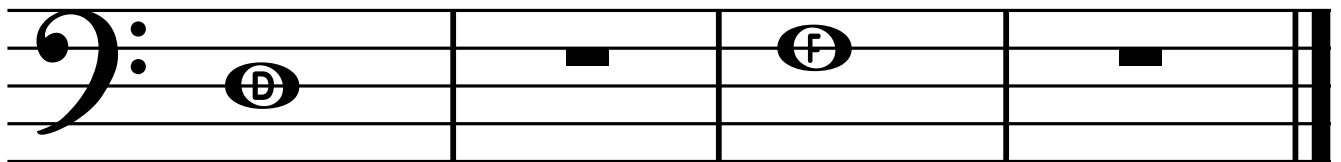
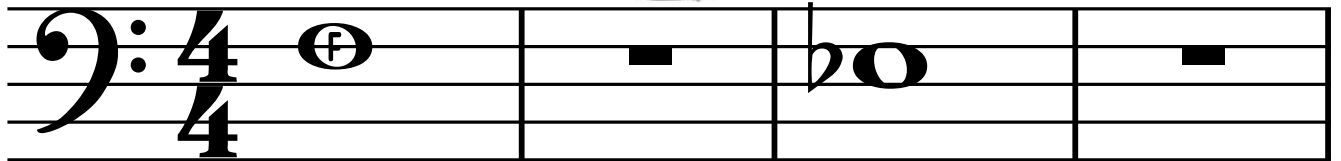
NEW NOTE  
1st Position

"F"

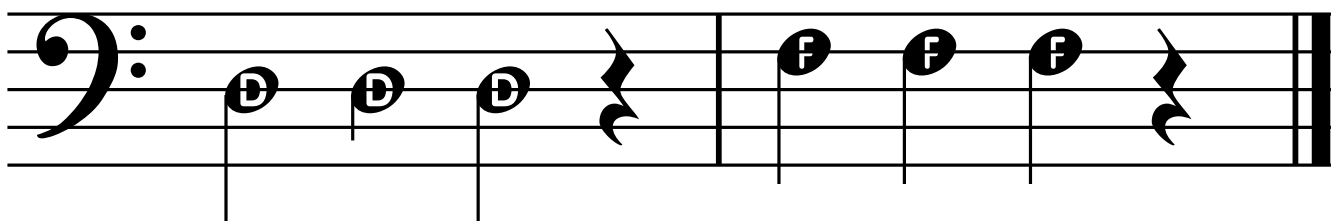


Whole rests get four beats of silence.

# 10. Couch Potato



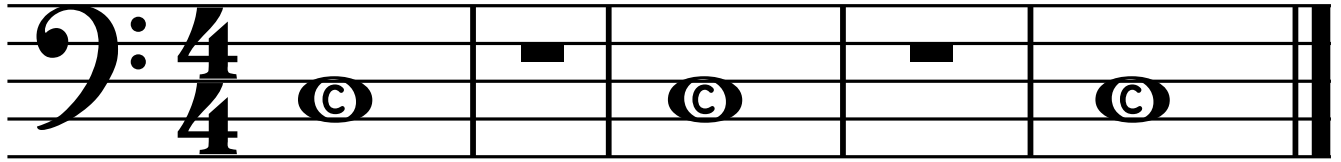
# 11. Puppy Dogs



# 12. Our Fourth Note

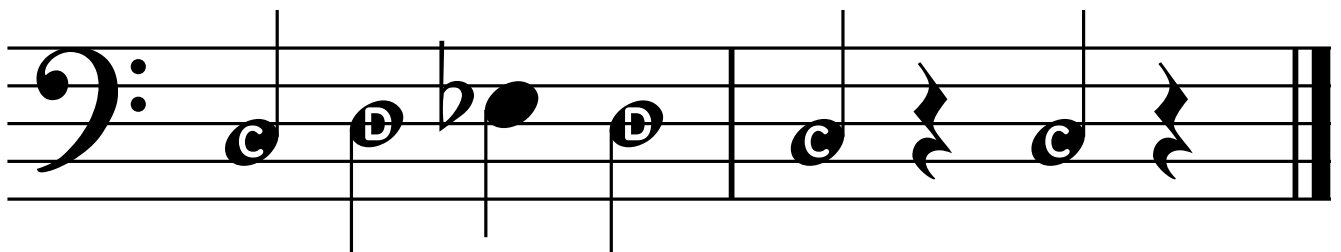
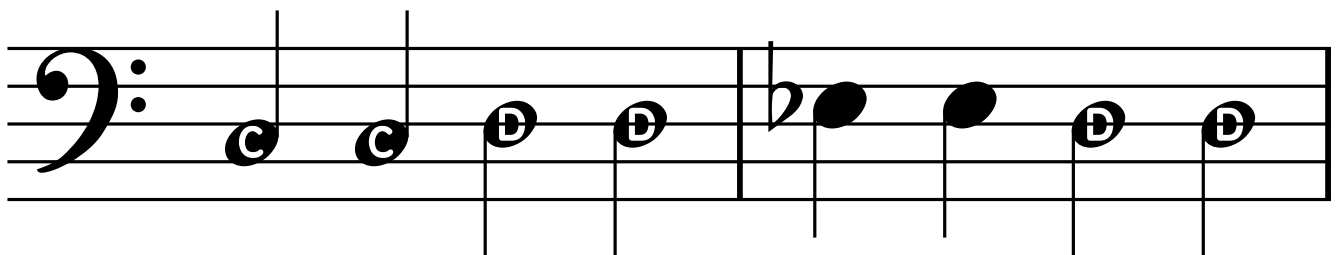
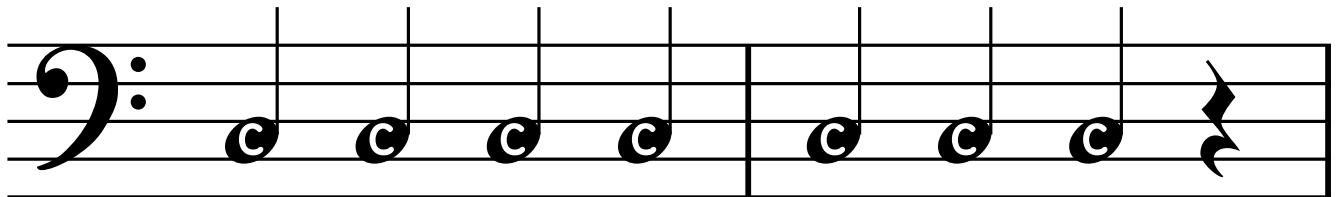
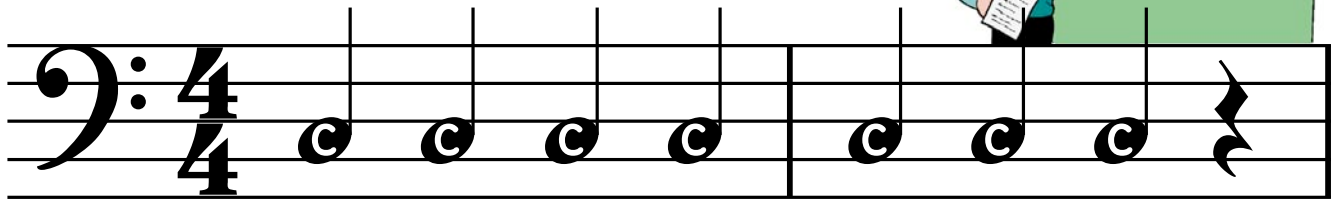
NEW NOTE  
6th Position

"C"



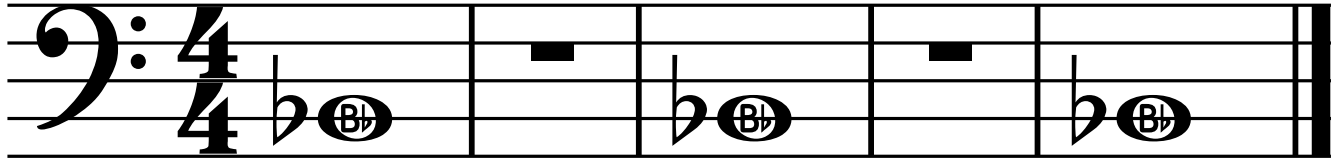
6

# 13. Apple for the Teacher

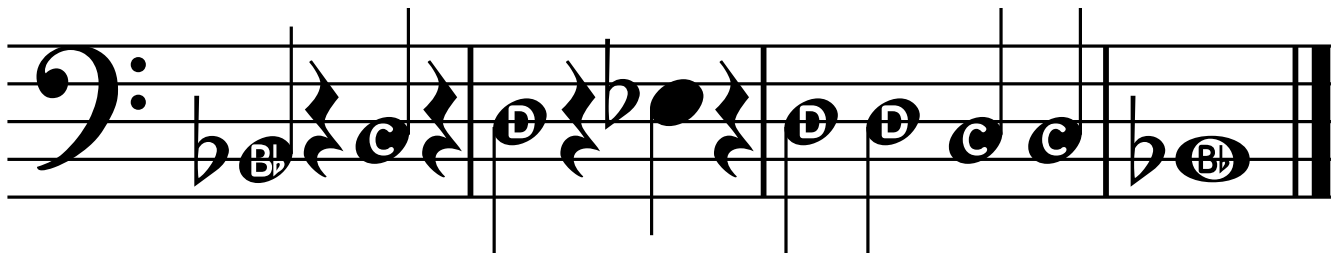
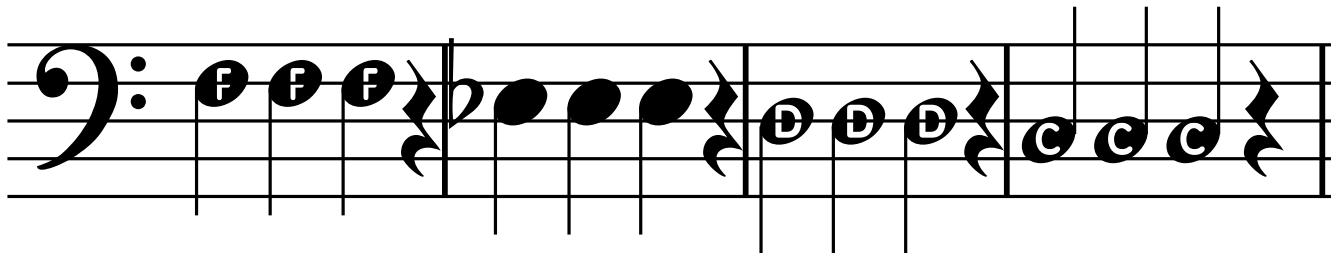
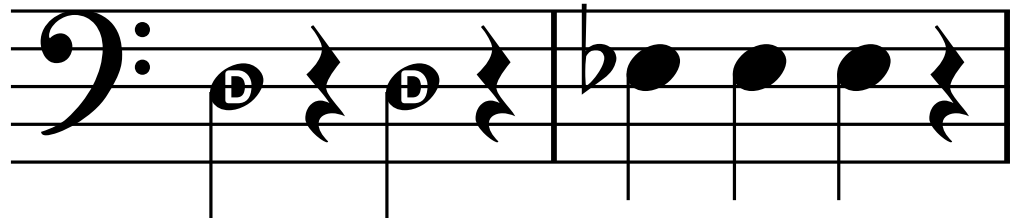
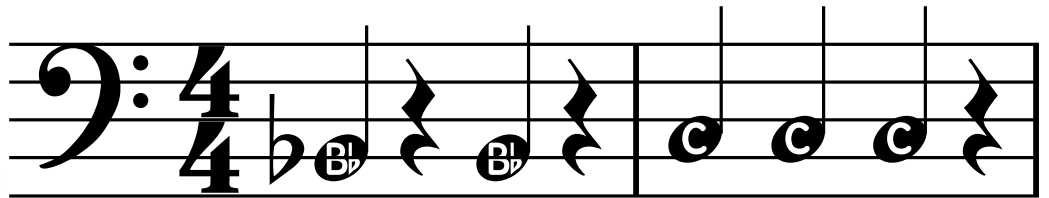


# 14. Our Fifth Note

NEW NOTE  
1st Position **"B flat"**



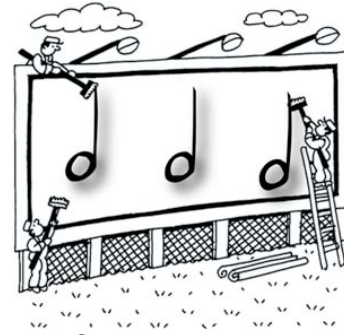
# 15. Bumper Cars



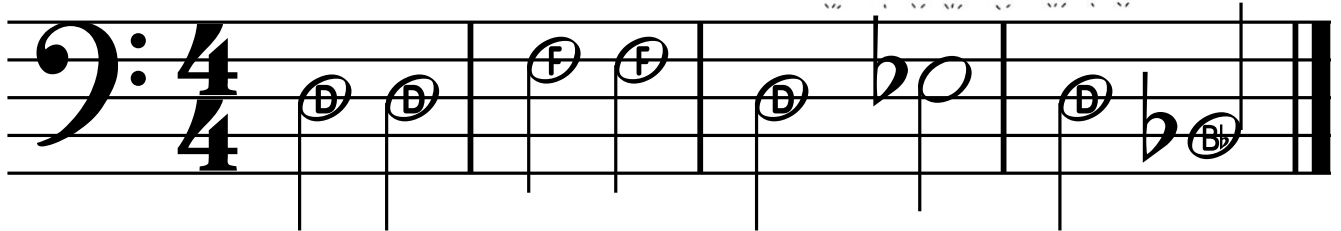


# Half Note

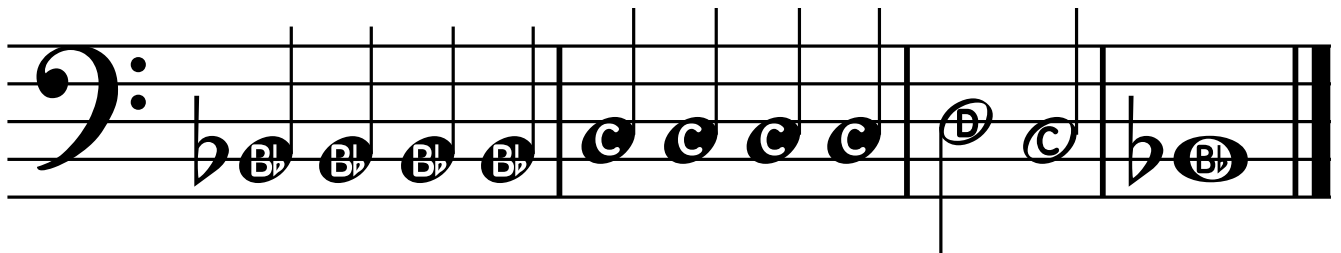
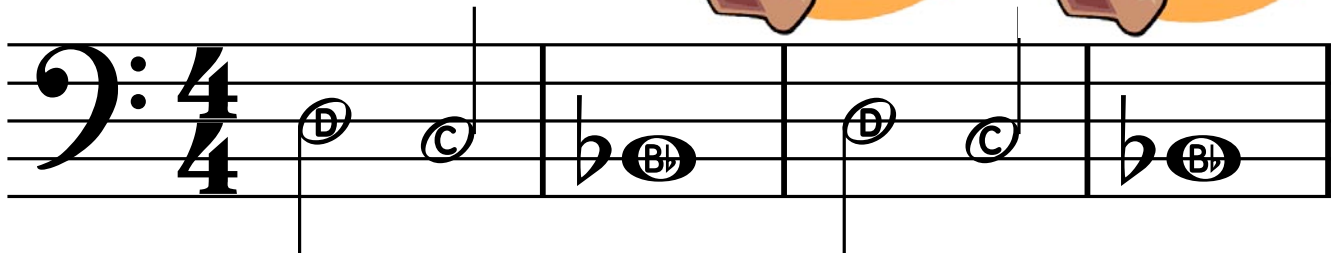
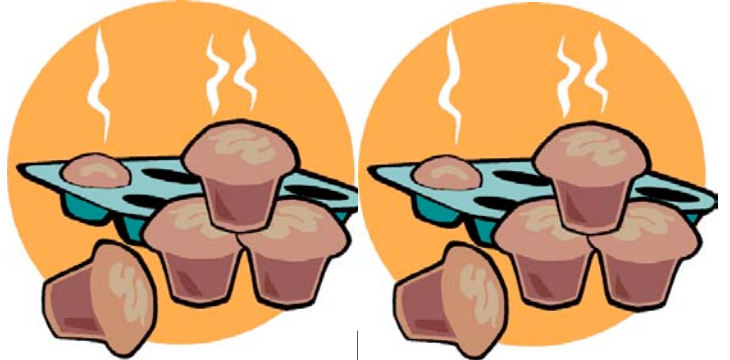
Two Beats of Sound



## 16. Half Notes Happen

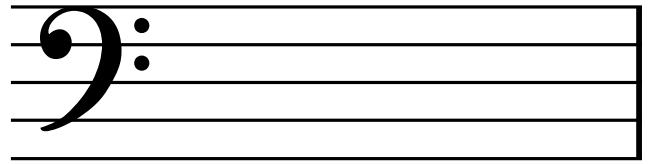


## 17. Hot Cross Buns



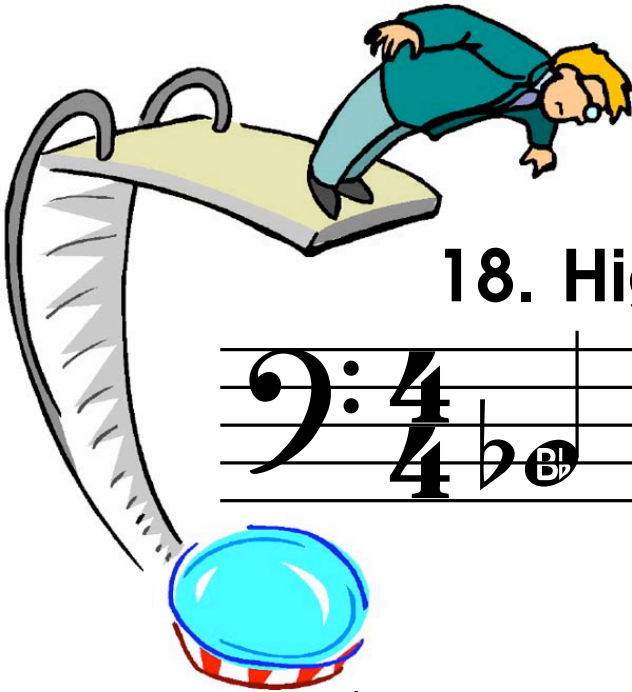
8

Notes are written on lines and spaces called the "staff".

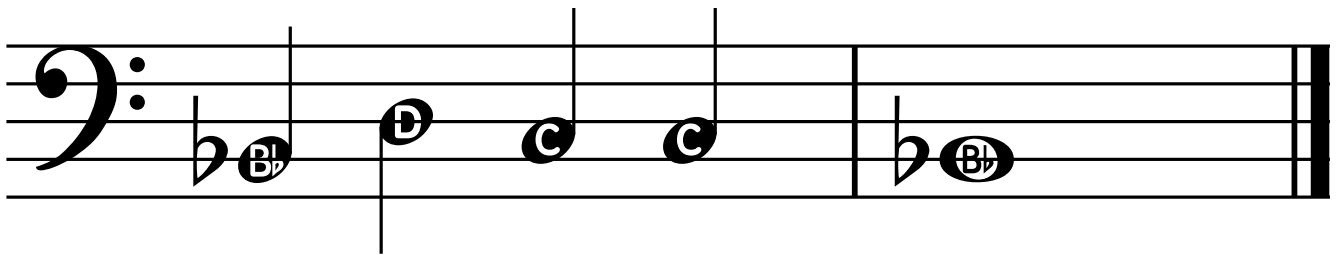
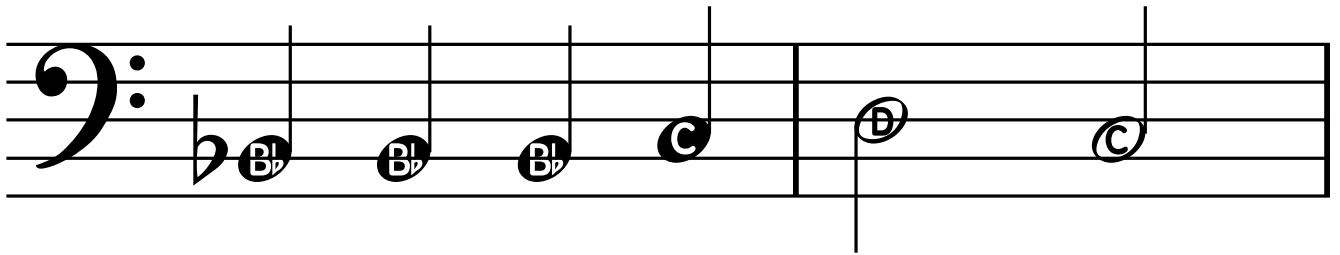
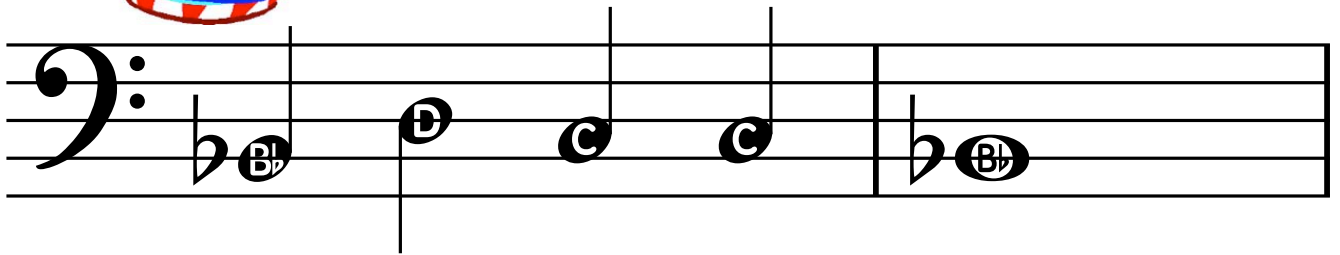
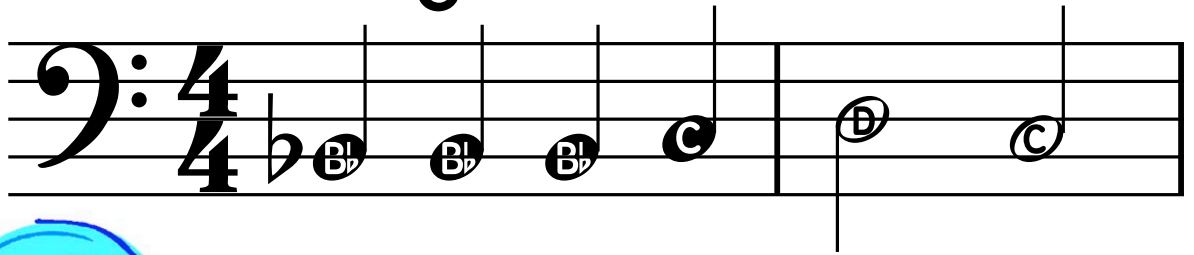


How many lines can you find?

How many spaces can you find?

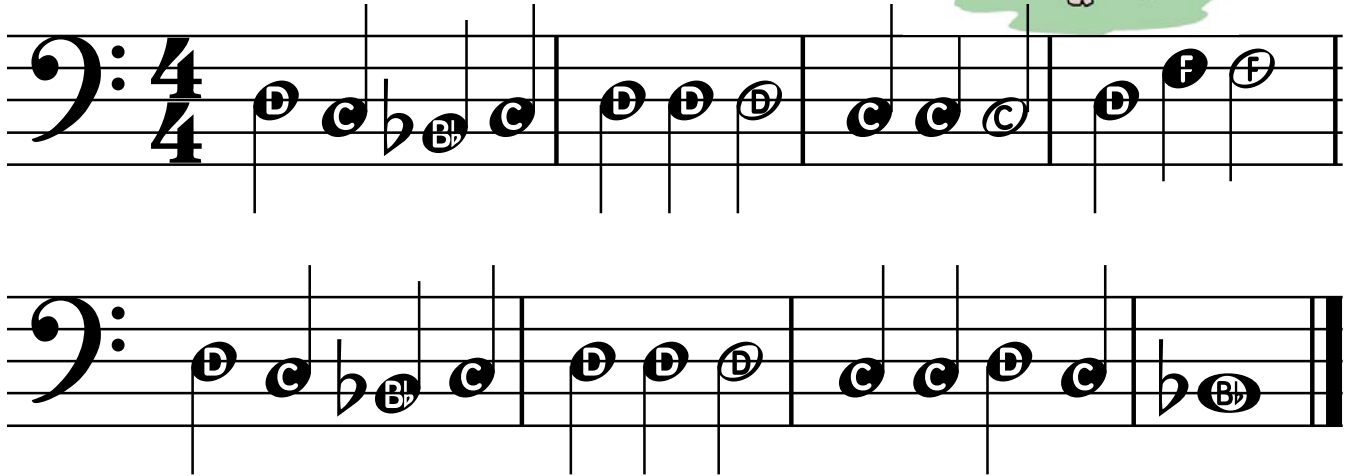


## 18. High Dive





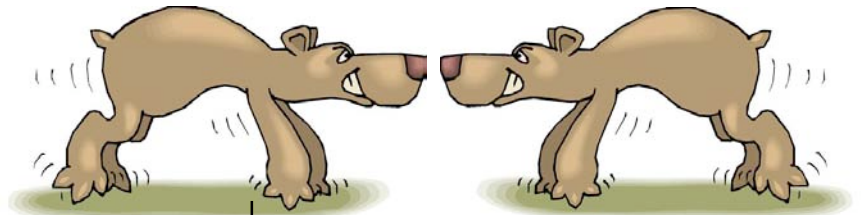
## 19. Mary Had a Little Lamb



When you see this logo, follow the link for additional songs and exercises online.

[www.bandfunbook.com/PAGE9](http://www.bandfunbook.com/PAGE9)

## 20. Bad News Bears





# 21. Dreydl, Dreydl

Musical notation for 'Dreydl, Dreydl' in bass clef, 4/4 time. The first line contains 10 measures of music with notes F, D, F, D, F, D, D, F, F, D, and C. The second line contains 6 measures of music with notes B, C, B, C, F, B, D, C, and B.



# 22. Notes Without Letters

Musical notation for 'Notes Without Letters' in bass clef, 4/4 time. The first line contains 8 measures of music with notes B, B, C, C, D, D, and B. The second and third lines contain 8 measures of music with notes B, B, C, C, and B.

**NEW NOTE**  
2nd Position

# Low "A"

Blow gently.  
Play easy like your "Bb".

11

2



## 23. Shoo Fly, Don't Bother Me!

4/4

A Bb

F F F

## 24. Crazy Tonguing



4/4

Bb A A A Bb Bb Bb Bb

# Rhythm Fun



## Eighth Notes

One eighth note gets 1/2 count.  
Two eighth notes get ONE count.

**A**  $\frac{4}{4}$

**B**  $\frac{4}{4}$

**C**  $\frac{4}{4}$

**D**  $\frac{4}{4}$

**E**  $\frac{4}{4}$





# 25. Yankee Doodle Cha Cha

Two staves of musical notation for 'Yankee Doodle Cha Cha'. The first staff begins with a bass clef, a key signature of two flats (B-flat and E-flat), and a 4/4 time signature. The notes are: B-flat, B-flat, C, C, D, B-flat, D, C, C, C, B-flat, B-flat, C, C, D, B-flat, C, C, C.

The second staff continues the melody with notes: B-flat, B-flat, C, C, D, D, C, C, B-flat, C, B-flat, C, C, C, B-flat, B-flat, B-flat, B-flat.

# 26. Caribbean Cruise



Two staves of musical notation for 'Caribbean Cruise'. The first staff begins with a bass clef, a key signature of two flats (B-flat and E-flat), and a 4/4 time signature. The notes are: F, G, G, G, F, C, D, F, F, F, B-flat.

The second staff continues the melody with notes: F, G, G, G, F, F, D, F, D, D.

# 27. Country Hoe Down



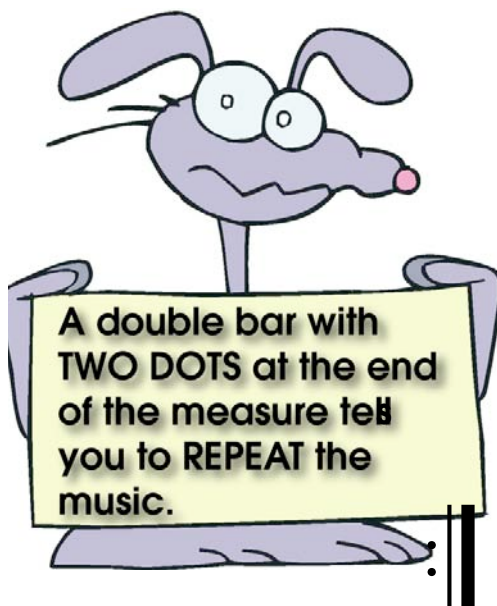
Two staves of musical notation for 'Country Hoe Down'. The first staff begins with a bass clef, a key signature of two flats (B-flat and E-flat), and a 4/4 time signature. The notes are: B-flat, B-flat, B-flat, C, C, D, B-flat, B-flat, C, D, D, D, C, B-flat, C, C.

The second staff continues the melody with notes: B-flat, B-flat, B-flat, C, C, D, D, D, F, F, D, C, B-flat, B-flat.

## 28. Eighth Note Slide



Two staves of musical notation in bass clef, 4/4 time, and one flat. The first staff contains the following notes: G2, A2, B2, C3, D3, E3, F3, G3, A3, B3, C4, D4, E4, F4, G4, A4, B4, C5. The second staff contains: D4, E4, F4, G4, A4, B4, C5, D5, E5, F5, G5, A5, B5, C6, D6, E6, F6, G6, A6, B6, C7.



Repeat Sign



## 29. The Cabbage Song



Two staves of musical notation in bass clef, 4/4 time, and one flat. The first staff contains the following notes: G2, A2, B2, C3, D3, E3, F3, G3, A3, B3, C4, D4, E4, F4, G4, A4, B4, C5. The second staff contains: D4, E4, F4, G4, A4, B4, C5, D5, E5, F5, G5, A5, B5, C6, D6, E6, F6, G6, A6, B6, C7.

Firm corners! 15  
Lots of air!  
Blow high like your "F".

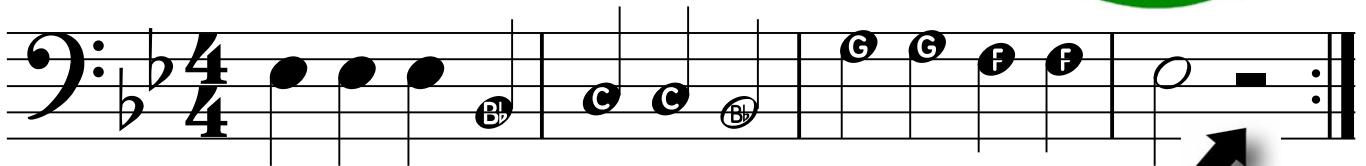


NEW NOTE

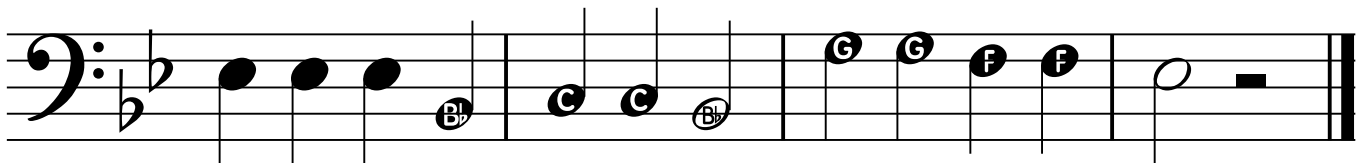
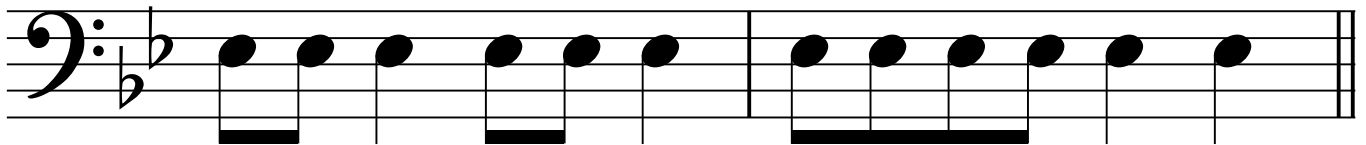
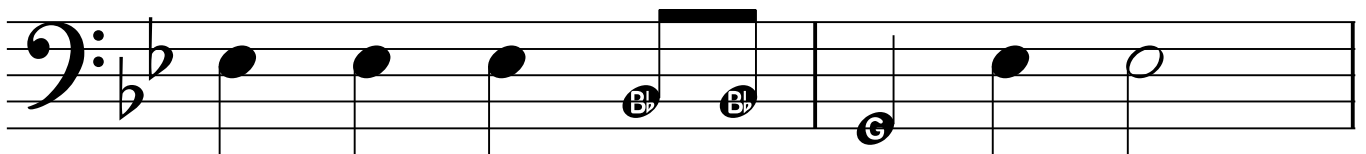
"G"



# 30. Old MacDonald Had a Farm

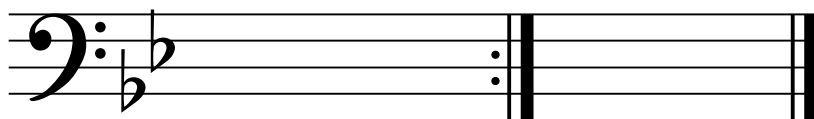


Half note rests get  
two beats of silence.





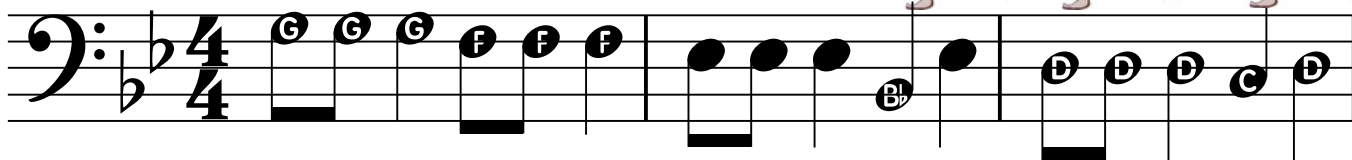
1. | 2.



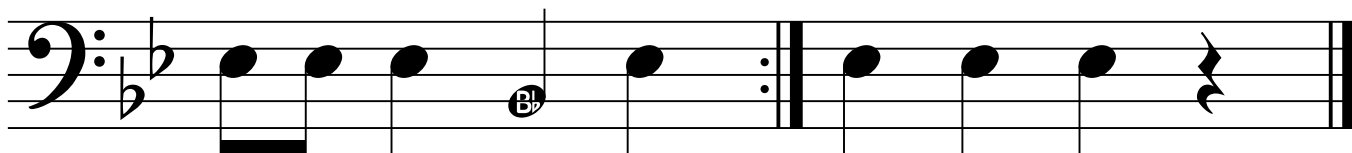
## First and Second Endings

When you reach the repeat sign under the first ending, stop and go back to the beginning. When you get to the first ending again, skip it and go to the second ending.

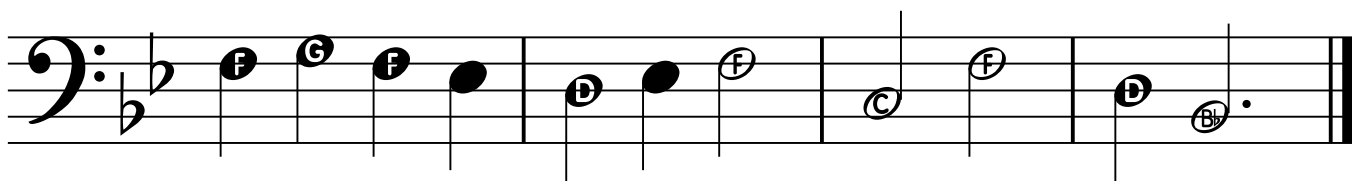
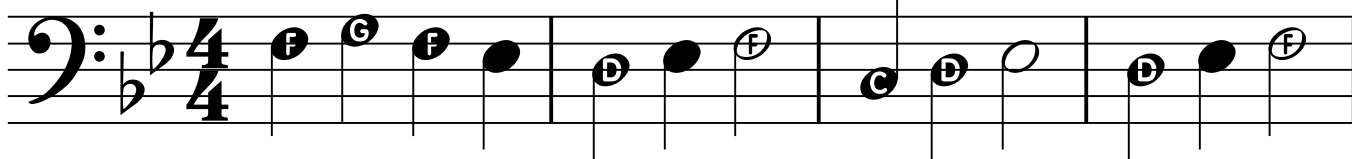
### 31. Stodola Pumpa



1. | 2.



### 32. London Bridge

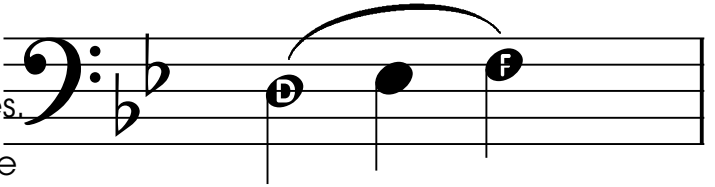






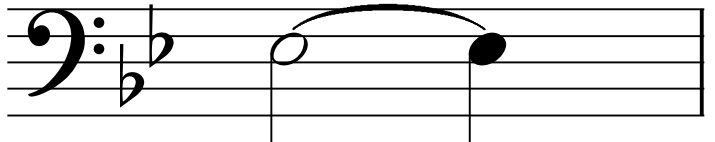
# Slur

A "slur" is a curved line that connects two or more notes of different pitches. Tongue the first note and move to the next notes without tonguing. Don't stop blowing.



# Tie

A "tie" is a curved line that connects two or more notes of the same pitch. Hold the note for the combined value of the notes.



## 33. Southern Roses

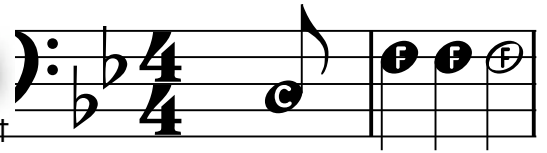


Musical score for "Southern Roses" in bass clef, 3/4 time, key of B-flat major. The score consists of four staves. The first staff starts with a B-flat note. The second staff has a slur over D, E, and F notes. The third staff continues the melody. The fourth staff features a slur over a half note D and a quarter note E, followed by a quarter rest and a quarter note D.



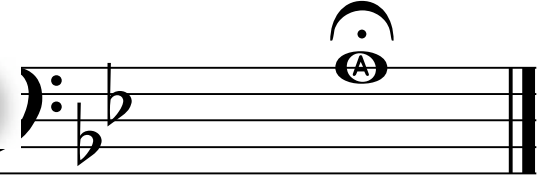
## Pick-Up Notes

Note(s) that come before the first full measure of a piece of music.

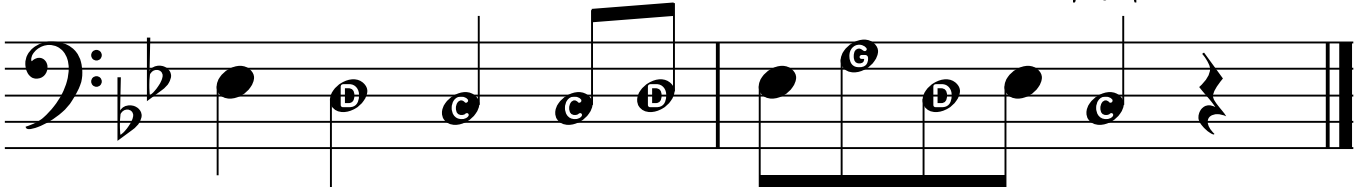
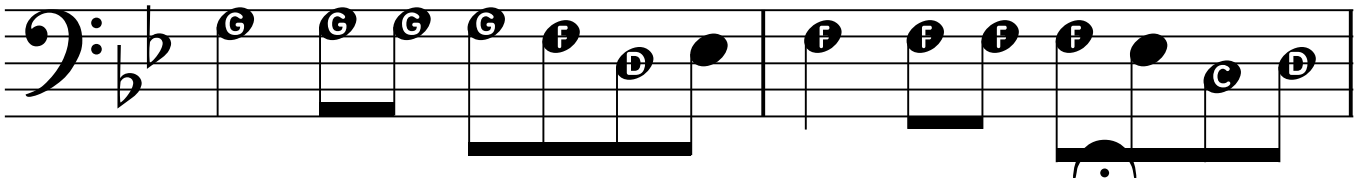
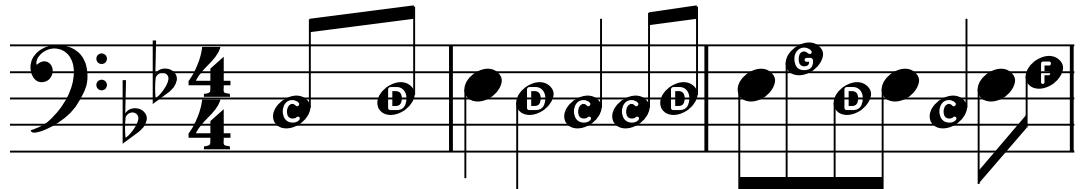


## Fermata (Hold)

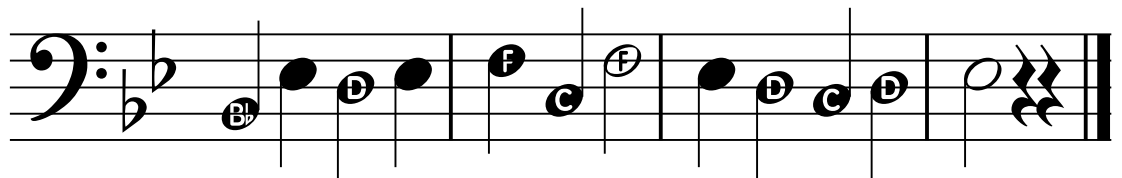
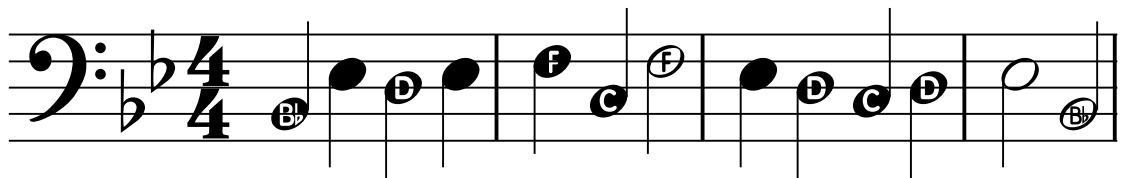
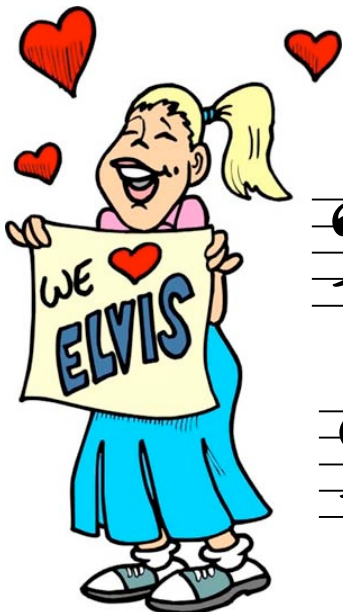
Hold (keep blowing) the note until your director tells you to stop,



### 34. Snake Charmer

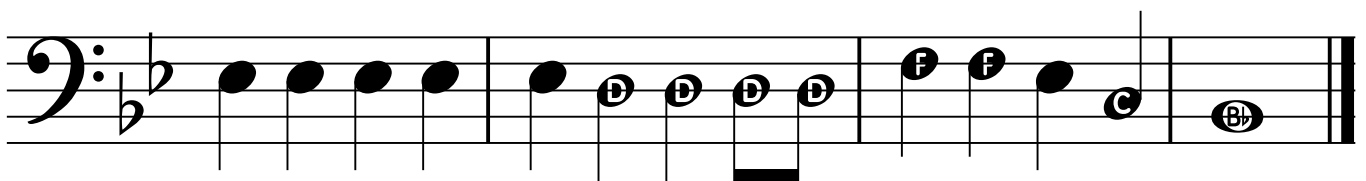
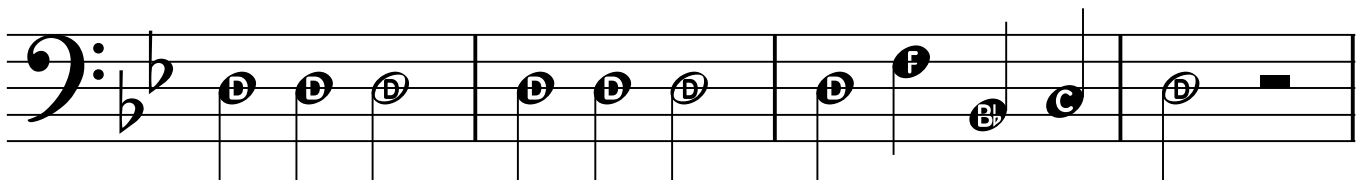
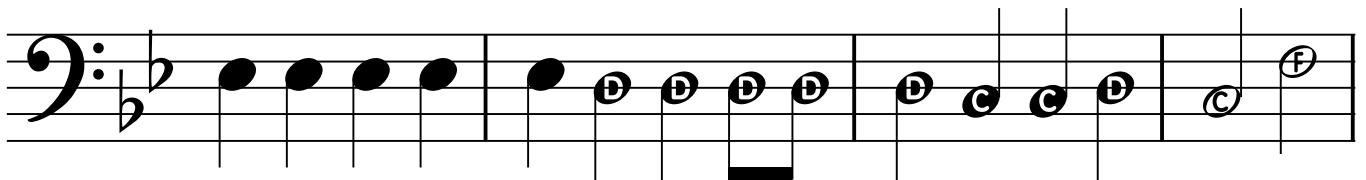
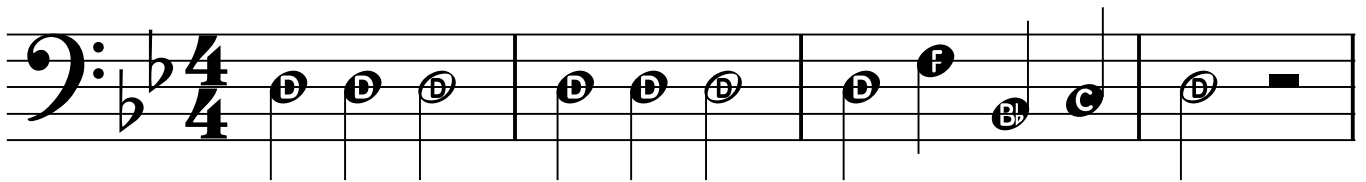


### 35. Aura Lee





# 36. Jingle Bells





## *D.C. al Fine*

Go back to the beginning and play until "Fine".

### 37. Twinkle, Twinkle, Little Star

*Fine*

*D. C. al Fine*



## *D.S. al Fine*

Go back to the sign and play until "Fine".



The "sign"



### 38. Ode to Joy

*Fine*

*D.S.al Fine*



Flat Sign



NEW NOTE

3

"A Flat"<sup>21</sup>



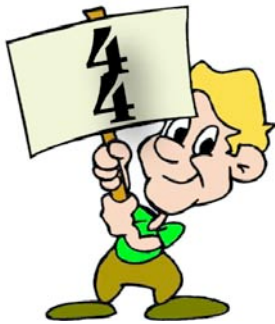
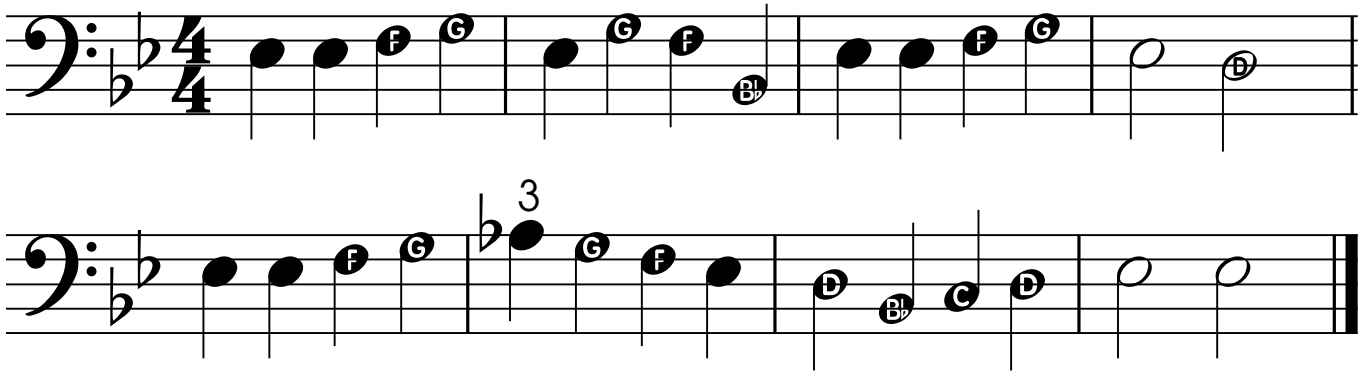
3

A "flat" lowers the note one half step. It stays in effect for the entire measure.

Firm corners.

Same position as "E flat" but blow faster.

### 39. Yankee Doodle

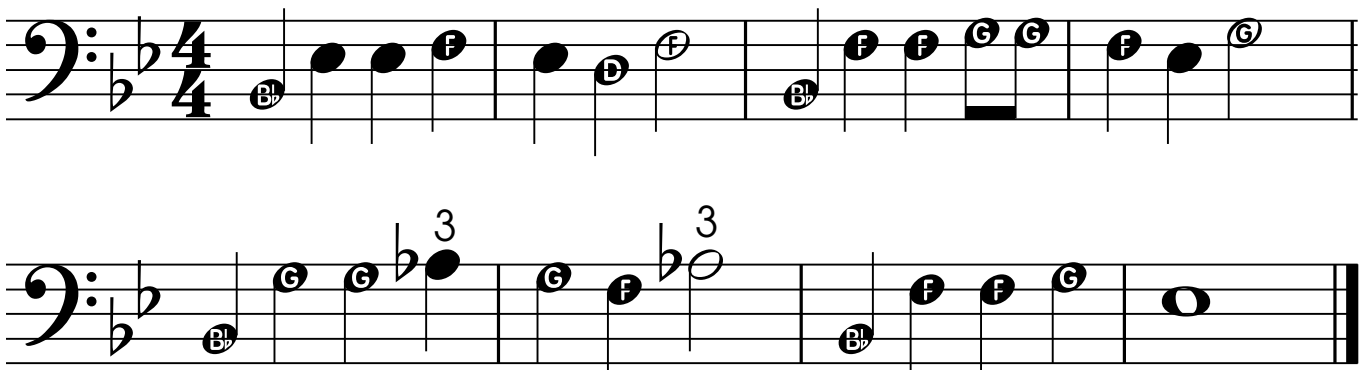


4/4

Time Signature

A "time signature" tells you how many beats there are in each measure of music.

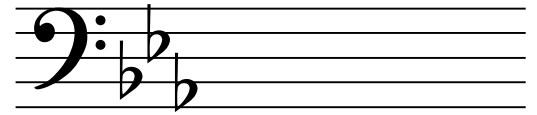
### 40. Little Cabin in the Wood



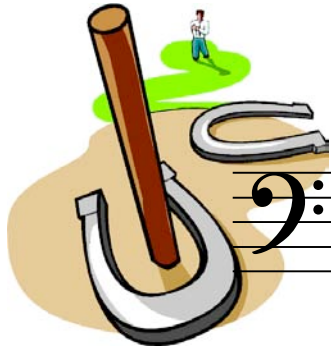


## Key Signature

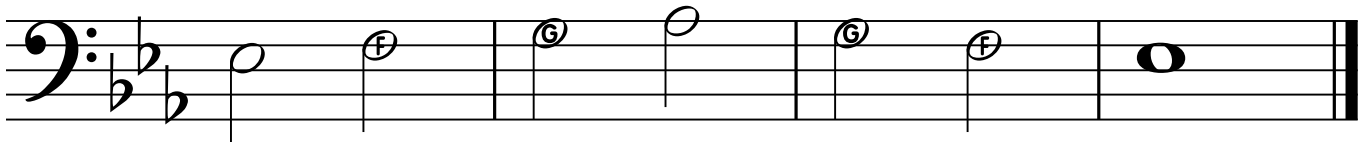
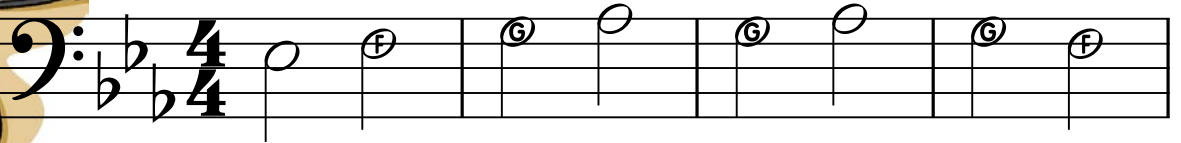
A "key signature" changes certain notes throughout a piece of music.



This key signature with three flats effect all B's, E's and A's.

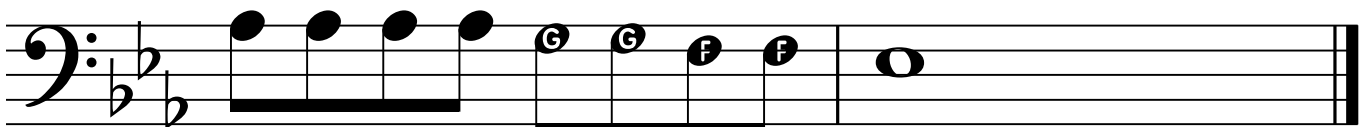
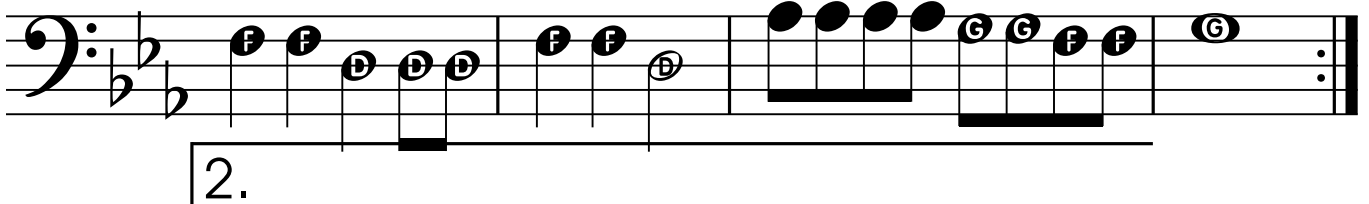
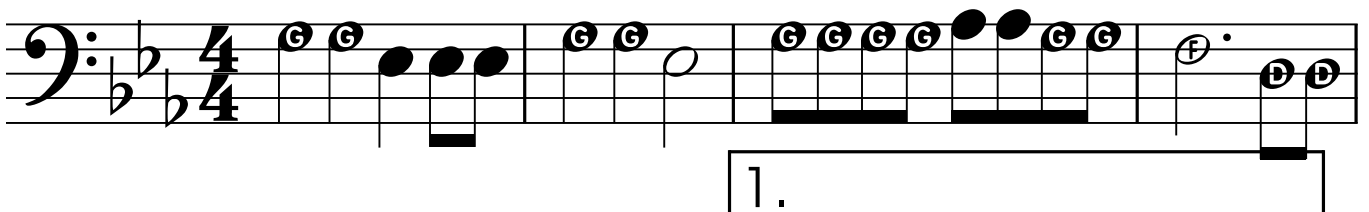


### 41. It's a Ringer!



[www.bandfunbook.com/PAGE22](http://www.bandfunbook.com/PAGE22)

### 42. Polly Wolly Doodle





# Natural Sign

A "natural" cancels a flat or sharp. It remains in effect for the entire measure.

NEW NOTE

2

## "E Natural"

### 43. Mary's Other Lamb



### 44. O Come Little Children (Melody)



### 45. O Come Little Children (Harmony)



## 46. Jolly Old St. Nick



1. 2.

The Israeli National Anthem, HATIKVA, means "The Hope." Hatkiva expresses the hope of the Jewish people that they would someday return to the land of their forefathers.



## 47. Hatikvah

## 48. Slippery Slurs







# Round

Playing the same music beginning at different times.

## 49. Are You Sleeping?

a Four Part Round



# Dynamics

*p*

**Piano**

Play with a soft volume.

*f*

**Forte**

Play with a full volume.

## 50. Minka, Minka

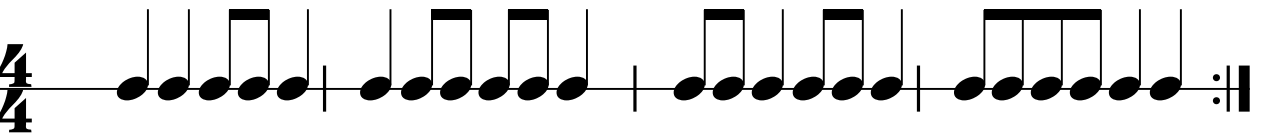
## 51. Rollin' Back and Forth

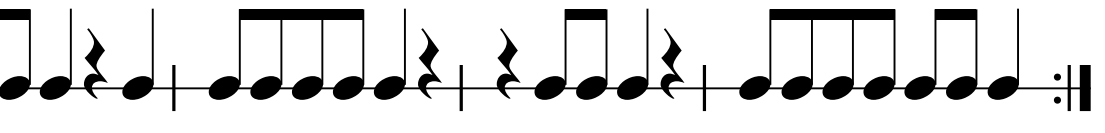
Use only fourth position.

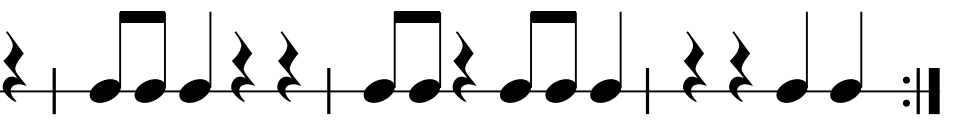
First measure think "Tah-Eee-Ah".

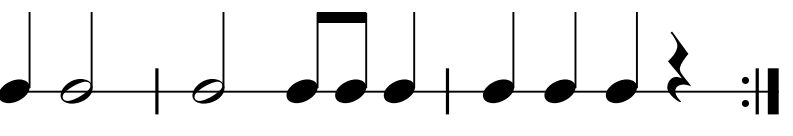


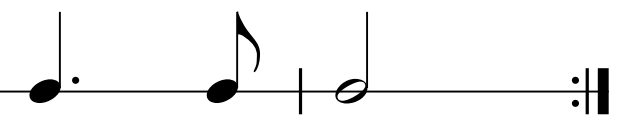
# Rhythm Fun

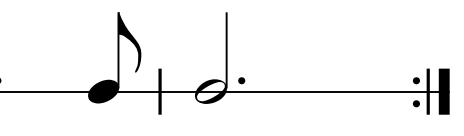
**A**  $\frac{4}{4}$  

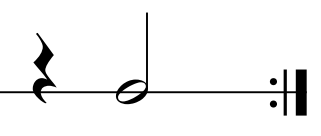
**B**  $\frac{4}{4}$  

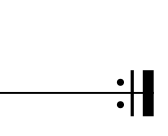
**C**  $\frac{4}{4}$  

**D**  $\frac{4}{4}$  

**E**  $\frac{2}{4}$  

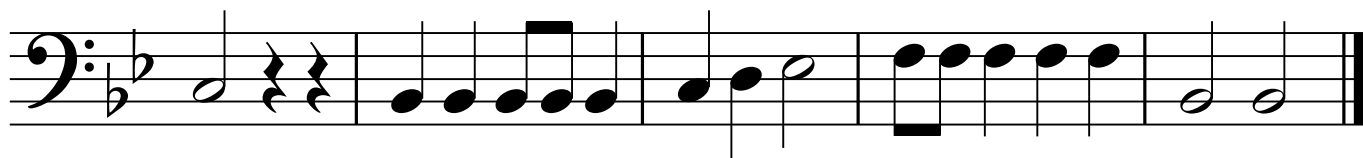
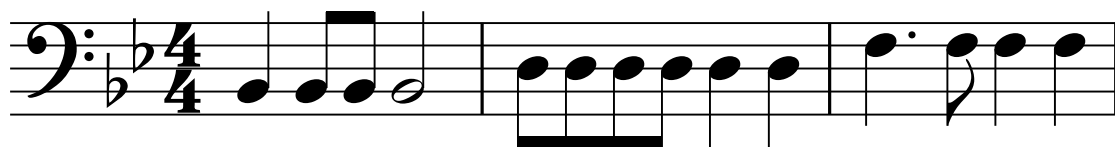
**F**  $\frac{3}{4}$  

**G**  $\frac{3}{4}$  

**H**  $\frac{3}{4}$  

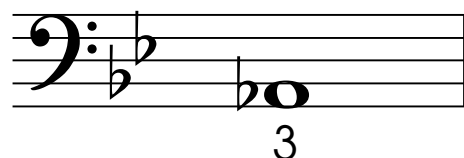


### 54. Rhythm Wreck



NEW NOTE

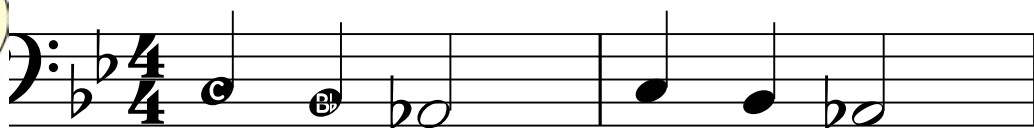
"LOW A FLAT"



Blow low like a "Bb".



### 55. More Hot Cross Buns





30

### 59. Bach Minuet



Musical notation for '59. Bach Minuet' in bass clef, 2/4 time, B-flat major. The piece consists of two lines of music. The first line has a treble clef and a 2/4 time signature. The second line has a bass clef and a 2/4 time signature. The key signature has one flat (B-flat). The music features a simple melody with a repeat sign and two endings. The first ending leads back to the beginning, and the second ending concludes the piece.

### 60. Rueben and Rachel



Musical notation for '60. Rueben and Rachel' in bass clef, 2/4 time, B-flat major. The piece consists of two lines of music. The first line has a bass clef and a 2/4 time signature. The second line has a bass clef and a 2/4 time signature. The key signature has one flat (B-flat). The music features a simple melody with dynamic markings 'f' (forte) and 'p' (piano).

### 61. When Love Is Kind



Musical notation for '61. When Love Is Kind' in bass clef, 3/4 time, B-flat major. The piece consists of two lines of music. The first line has a bass clef and a 3/4 time signature. The second line has a bass clef and a 3/4 time signature. The key signature has one flat (B-flat). The music features a simple melody with a repeat sign and a final note.



# Dynamics

*mp*

**Mezzo Piano**

Play with a medium soft volume. <sup>31</sup>

*mf*

**Mezzo Forte**

Play with a medium loud volume.

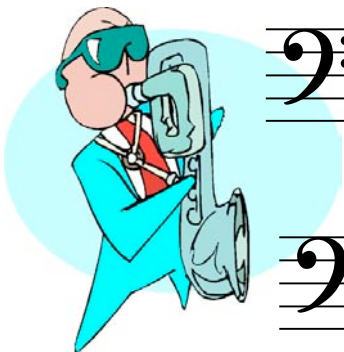
## 62. Mexican Hat Dance



Bass clef, 3/4 time signature, key signature of one flat (Bb). The first measure is marked *mp*. The second measure has an accent (>) and is marked *mf*. The third measure has an accent (>) and is marked *mf*. The fourth measure has an accent (>) and is marked *mf*. The fifth measure has an accent (>) and is marked *mf*. The sixth measure has an accent (>) and is marked *mf*.

Bass clef, 3/4 time signature, key signature of one flat (Bb). The first measure is marked *mp*. The second measure has an accent (>) and is marked *mf*. The third measure has an accent (>) and is marked *mf*. The fourth measure has an accent (>) and is marked *mf*. The fifth measure has an accent (>) and is marked *mf*. The sixth measure has an accent (>) and is marked *mf*. The seventh measure has an accent (>) and is marked *f*. The eighth measure has an accent (>) and is marked *f*. The ninth measure has an accent (>) and is marked *f*. The tenth measure has an accent (>) and is marked *f*. The piece ends with a double bar line.

## 63. Blues Dues



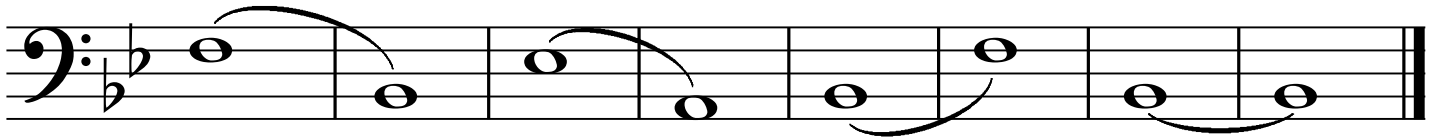
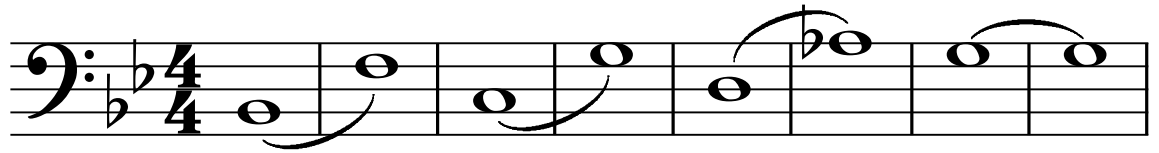
Bass clef, 4/4 time signature, key signature of one flat (Bb). The first measure has a chord symbol (Bb) and a note (Bb). The second measure has a chord symbol (D) and a note (D). The third measure has a chord symbol (F) and a note (F). The fourth measure has a chord symbol (G) and a note (G). The fifth measure has a chord symbol (Bb) and a note (Bb). The sixth measure has a chord symbol (G) and a note (G). The seventh measure has a chord symbol (F) and a note (F). The eighth measure has a chord symbol (D) and a note (D). The ninth measure has a chord symbol (Bb) and a note (Bb). The tenth measure has a chord symbol (D) and a note (D). The eleventh measure has a chord symbol (F) and a note (F). The twelfth measure has a chord symbol (G) and a note (G).

Bass clef, 4/4 time signature, key signature of one flat (Bb). The first measure has a chord symbol (G) and a note (G). The second measure has a chord symbol (F) and a note (F). The third measure has a chord symbol (Bb) and a note (Bb). The fourth measure has a chord symbol (G) and a note (G). The fifth measure has a chord symbol (F) and a note (F). The sixth measure has a chord symbol (G) and a note (G). The seventh measure has a chord symbol (G) and a note (G). The eighth measure has a chord symbol (F) and a note (F). The ninth measure has a chord symbol (Bb) and a note (Bb). The tenth measure has a chord symbol (G) and a note (G). The eleventh measure has a chord symbol (F) and a note (F). The twelfth measure has a chord symbol (Bb) and a note (Bb).

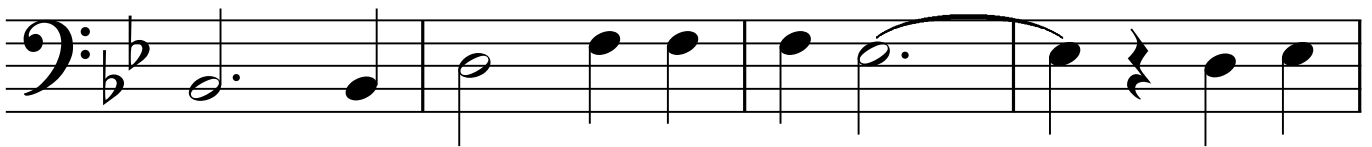
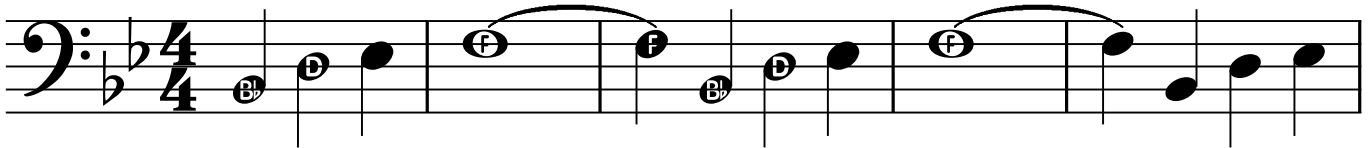
Bass clef, 4/4 time signature, key signature of one flat (Bb). The first measure has a note (Bb). The second measure has a note (D). The third measure has a note (F). The fourth measure has a note (G). The fifth measure has a note (Bb). The sixth measure has a note (D). The seventh measure has a note (F). The eighth measure has a note (G). The ninth measure has a note (Bb). The tenth measure has a note (D). The eleventh measure has a note (F). The twelfth measure has a note (G). The thirteenth measure has a note (Bb). The fourteenth measure has a note (D). The fifteenth measure has a note (F). The sixteenth measure has a note (G). The seventeenth measure has a note (Bb). The eighteenth measure has a note (D). The nineteenth measure has a note (F). The twentieth measure has a note (G). The piece ends with a double bar line.

Bass clef, 4/4 time signature, key signature of one flat (Bb). The first measure has a note (Bb). The second measure has a note (D). The third measure has a note (F). The fourth measure has a note (G). The fifth measure has a note (Bb). The sixth measure has a note (D). The seventh measure has a note (F). The eighth measure has a note (G). The ninth measure has a note (Bb). The tenth measure has a note (D). The eleventh measure has a note (F). The twelfth measure has a note (G). The thirteenth measure has a note (Bb). The fourteenth measure has a note (D). The fifteenth measure has a note (F). The sixteenth measure has a note (G). The seventeenth measure has a note (Bb). The eighteenth measure has a note (D). The nineteenth measure has a note (F). The twentieth measure has a note (G). The piece ends with a double bar line.

## 64. Big Breath Slurs



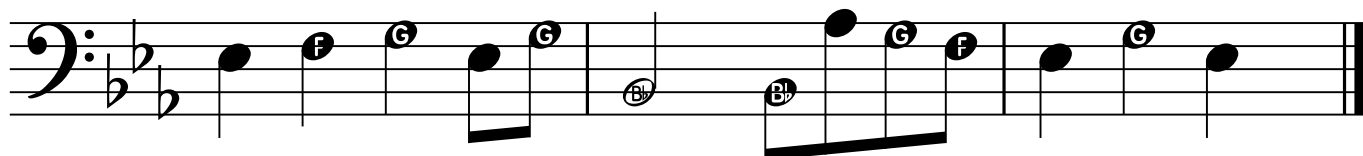
## 65. When the Saints Go Marchin' In



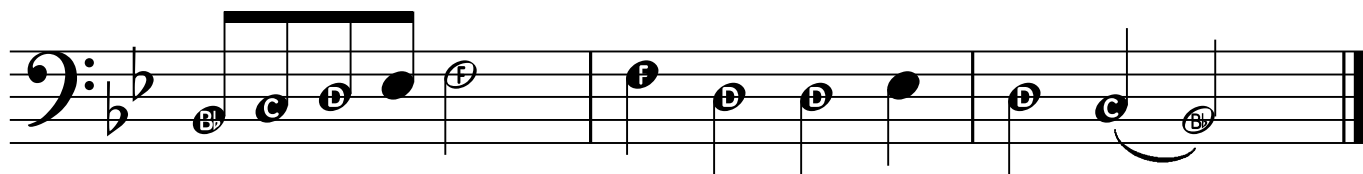
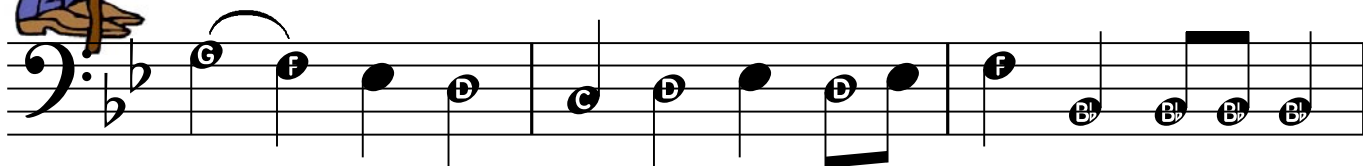




## 66. William Tell Overture

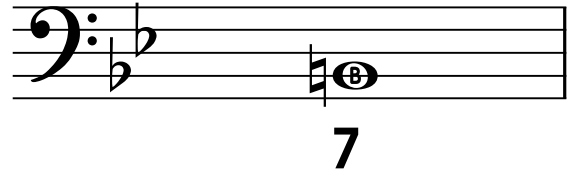


## 67. This Old Man

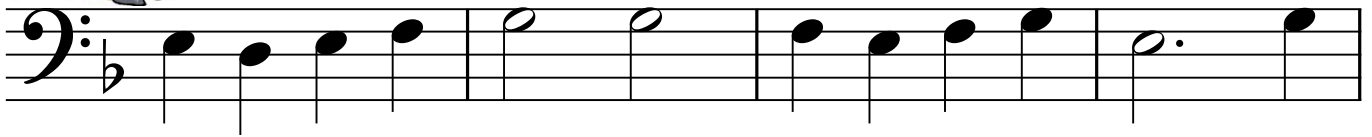
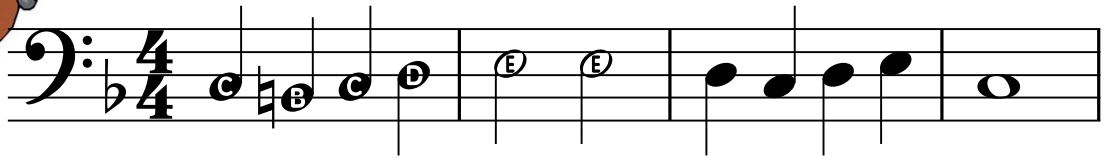


**NEW NOTE**

**B NATURAL**



**68. Sweetly Sings the Donkey**

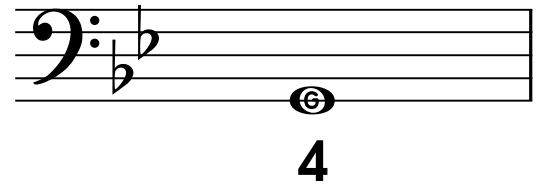


**69. Danger! Tricky Rhythms**

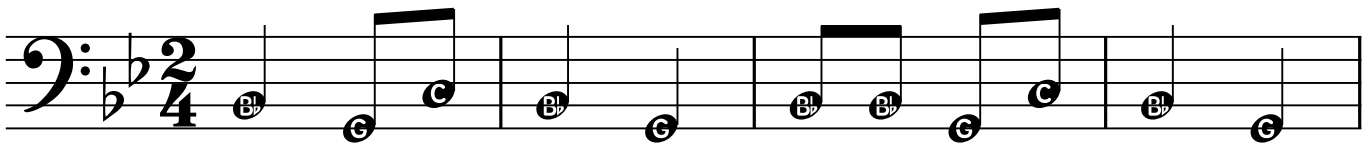


NEW NOTE

LOW G



### 70. Bye, Baby Bunting

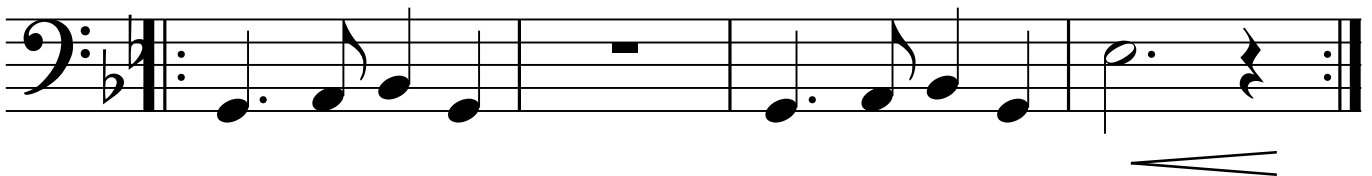


*Crescendo Get louder*

*Decrescendo Get softer*



### 71. Monster Melodies



**NEW NOTE**

**F SHARP**



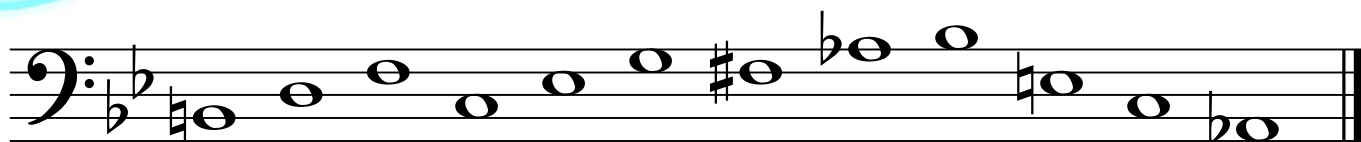
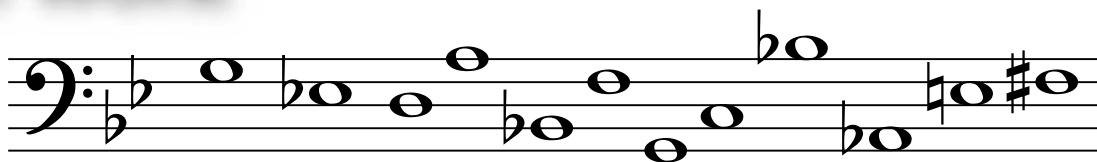
5

## 72. Barcarolle



## Fun Work

Write in the letters to these notes.



# Special Page for **TROMBONES**

## Lip Builders

Exercise 1: Bass clef, 4/4 time, key of Bb. Four measures of eighth notes with slurs and accents. Notes: Bb2, Bb2, Bb2, Bb2.

Exercise 2: Bass clef, 4/4 time, key of Bb. Four measures of eighth notes with slurs and accents. Notes: Bb2, Bb2, Bb2, Bb2.

Exercise 3: Bass clef, 4/4 time, key of Bb. Four measures of eighth notes with slurs and accents. Notes: Bb2, Bb2, Bb2, Bb2.

Exercise 4: Bass clef, 4/4 time, key of Bb. Four measures of eighth notes with slurs and accents. Notes: Bb2, Bb2, Bb2, Bb2.

Exercise 5: Bass clef, 4/4 time, key of Bb. Four measures of eighth notes with slurs and accents. Notes: Bb2, Bb2, Bb2, Bb2.

Exercise 6: Bass clef, 4/4 time, key of Bb. Four measures of eighth notes with slurs and accents. Notes: Bb2, Bb2, Bb2, Bb2.

Exercise 7: Bass clef, 4/4 time, key of Bb. Four measures of eighth notes with slurs and accents. Notes: Bb2, Bb2, Bb2, Bb2.



NEW NOTE  
High "A"

Bass clef, 4/4 time, key of Bb. One measure with a whole note on the second line (A2).



NEW NOTE  
High "Bb"

Bass clef, 4/4 time, key of Bb. One measure with a whole note on the first space (Bb2).

## Super Slurs

Exercise 1: Bass clef, 5/4 time, key of Bb. Four measures of eighth notes with slurs and accents. Notes: Bb2, Bb2, Bb2, Bb2.

Exercise 2: Bass clef, 5/4 time, key of Bb. Four measures of eighth notes with slurs and accents. Notes: Bb2, Bb2, Bb2, Bb2.

Exercise 3: Bass clef, 5/4 time, key of Bb. Four measures of eighth notes with slurs and accents. Notes: Bb2, Bb2, Bb2, Bb2.

Exercise 4: Bass clef, 5/4 time, key of Bb. Four measures of eighth notes with slurs and accents. Notes: Bb2, Bb2, Bb2, Bb2.

Exercise 5: Bass clef, 5/4 time, key of Bb. Four measures of eighth notes with slurs and accents. Notes: Bb2, Bb2, Bb2, Bb2.

Exercise 6: Bass clef, 5/4 time, key of Bb. Four measures of eighth notes with slurs and accents. Notes: Bb2, Bb2, Bb2, Bb2.

Exercise 7: Bass clef, 5/4 time, key of Bb. Four measures of eighth notes with slurs and accents. Notes: Bb2, Bb2, Bb2, Bb2.

## 74. Can Can



Musical notation for 'Can Can' in bass clef, 2/4 time, key of B-flat major. The piece consists of three staves of music. The first staff begins with a whole note G2. The second staff continues the melody. The third staff features a first ending (1.) and a second ending (2.) marked with repeat signs.

## 75. La Bamba

Musical notation for 'La Bamba' in bass clef, 4/4 time, key of B-flat major. The piece consists of four staves of music. The first staff begins with a whole note G2. The second staff continues the melody. The third staff features a first ending (1.) and a second ending (2.) marked with repeat signs. The fourth staff features a first ending (1.) and a second ending (2.) marked with repeat signs.

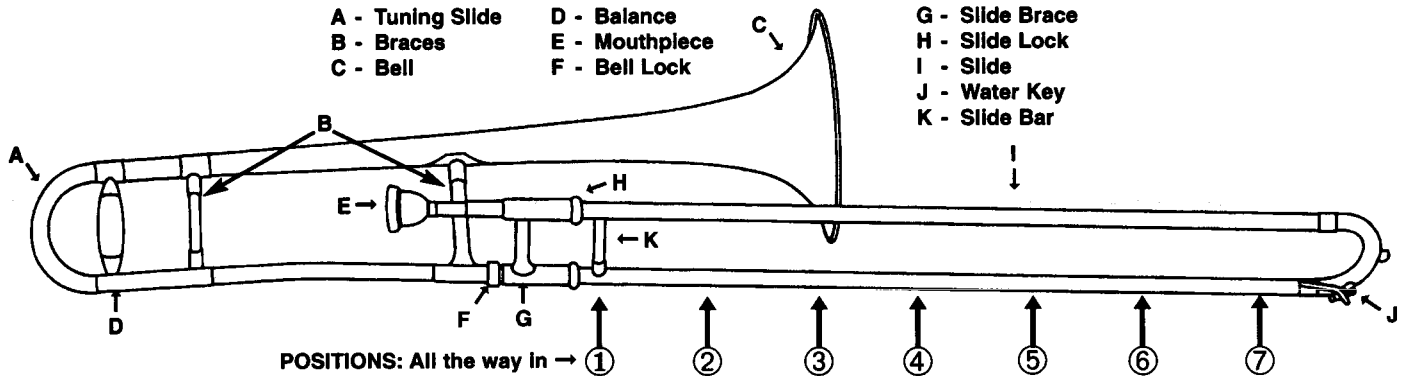
## 76. Simple Gifts

Musical score for "Simple Gifts" in bass clef, 4/4 time, B-flat major. The score consists of three staves of music. The first staff begins with a treble clef and a 4/4 time signature. The melody is written in bass clef. The second staff continues the melody with a slur over the first two measures. The third staff concludes the piece with a double bar line.

## 77. Amazing Grace

Musical score for "Amazing Grace" in bass clef, 3/4 time, B-flat major. The score consists of four staves of music. The first staff begins with a treble clef and a 3/4 time signature. The melody is written in bass clef. The second staff continues the melody with a slur over the last two measures. The third staff continues the melody with a slur over the last two measures. The fourth staff concludes the piece with a double bar line.

# Trombone Position Chart



	E	F	F# or G <sub>b</sub>	G	G# or A <sub>b</sub>	A	A# or B <sub>b</sub>	B	C	C# or D <sub>b</sub>	D	D# or E <sub>b</sub>
<b>1st Stave</b>												
<b>2nd Stave</b>	7	6	5	4	3	2	1	7	6	5	4	3
<b>3rd Stave</b>												
<b>4th Stave</b>	2	1 or 6	5	4	3	2 or 6	1 or 5	4	3	2	1 or 4	3
<b>5th Stave</b>												
<b>6th Stave</b>	2	1	-3	-2	3	2	1					