

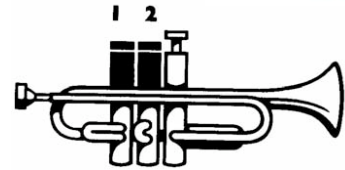
Welcome to the wonderful world of trumpet playing. Your teacher has shown you how to hold your instrument and make a sound on the mouthpiece.



Let's play our first song!

1. Our First Note

NEW NOTE
"E"



Musical notation for exercise 1: A treble clef staff in 4/4 time. The first measure contains a half note 'E' with the instruction '1 & 2' below it. The second measure contains four eighth notes, each with a stem pointing up. The third measure contains a half note 'E' with the instruction '1 & 2' below it. The fourth measure contains four eighth notes, each with a stem pointing up.

2. Our Second Note

NEW NOTE
"F"



Musical notation for exercise 2: A treble clef staff in 4/4 time. The first measure contains a half note 'F' with the instruction '1' below it. The second measure contains four eighth notes, each with a stem pointing up. The third measure contains a half note 'F' with the instruction '1' below it. The fourth measure contains four eighth notes, each with a stem pointing up.



3. Three's a Crowd

Musical notation for exercise 3: A treble clef staff in 4/4 time. The first measure contains a half note 'E' with the instruction '1 & 2' below it. The second measure contains four eighth notes, each with a stem pointing up. The third measure contains a half note 'F' with the instruction '1' below it. The fourth measure contains four eighth notes, each with a stem pointing up. The fifth measure contains a half note 'E' with the instruction '1 & 2' below it.

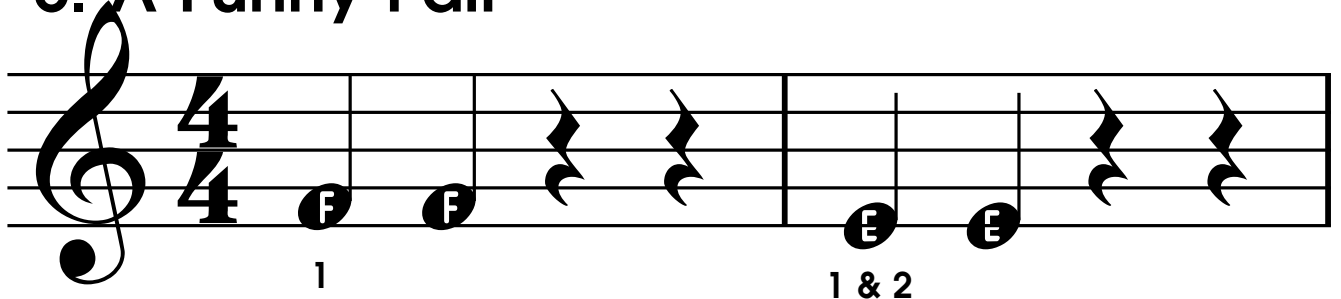
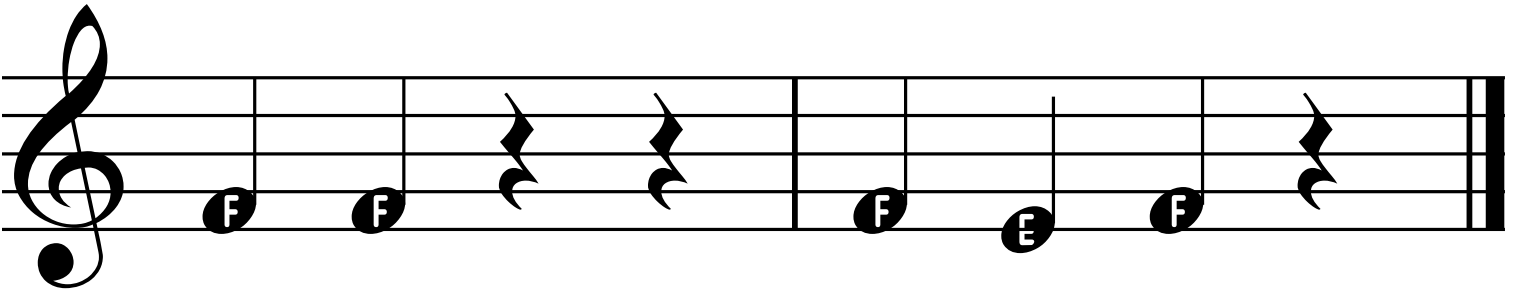
4. Four In a Row


Musical notation for exercise 4: A treble clef staff in 4/4 time. The first measure contains a half note 'E' with the instruction '1 & 2' below it. The second measure contains a half note 'F' with the instruction '1' below it. The third measure contains a half note 'E' with the instruction '1 & 2' below it. The fourth measure contains a half note 'F' with the instruction '1' below it.



-  Quarter notes get one beat of sound.
-  Whole notes get four beats of sound.

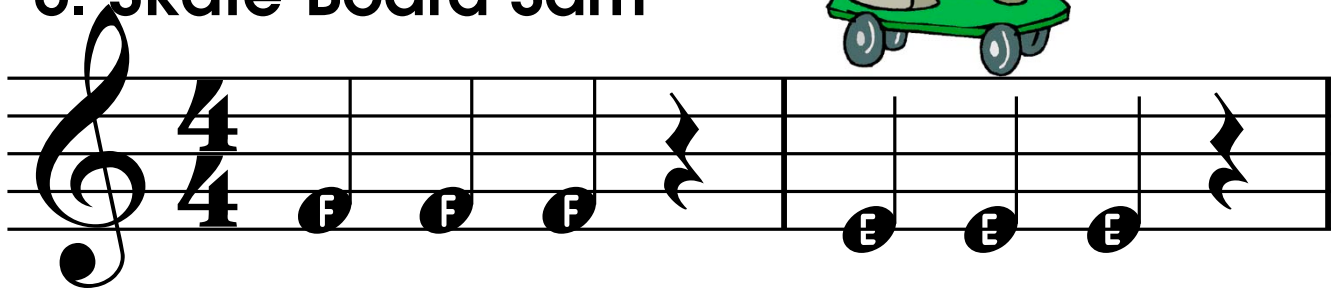
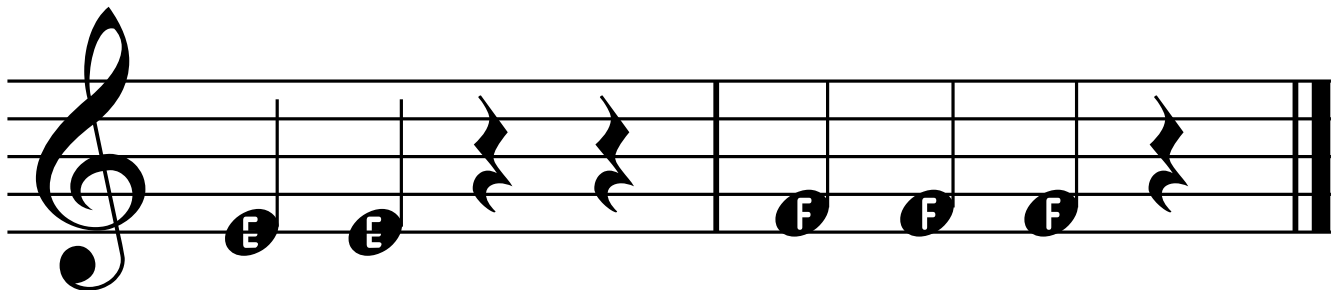
5. A Funny Pair

-  Quarter note rests get one beat of silence.

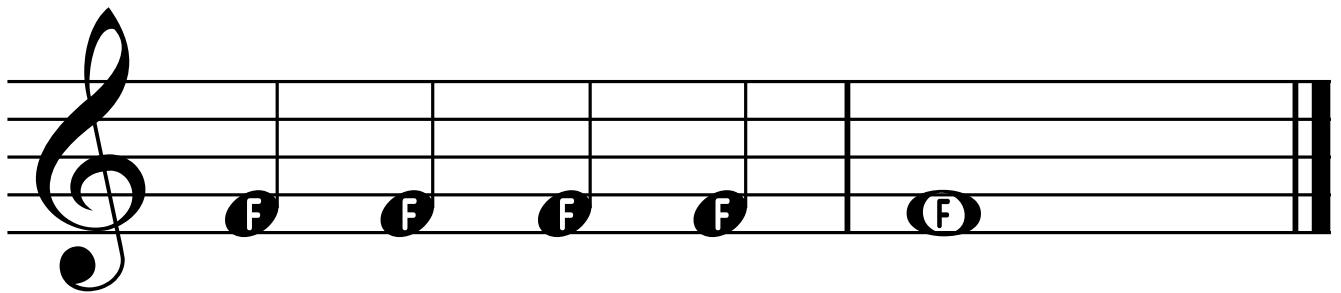
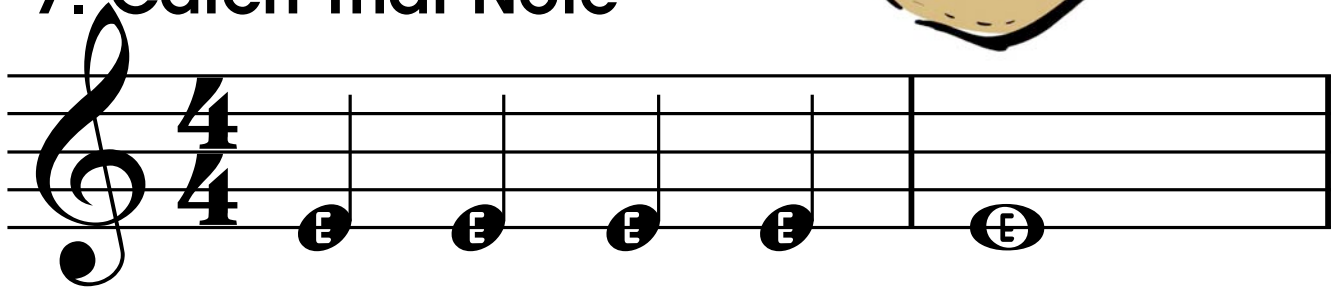


6. Skate Board Sam

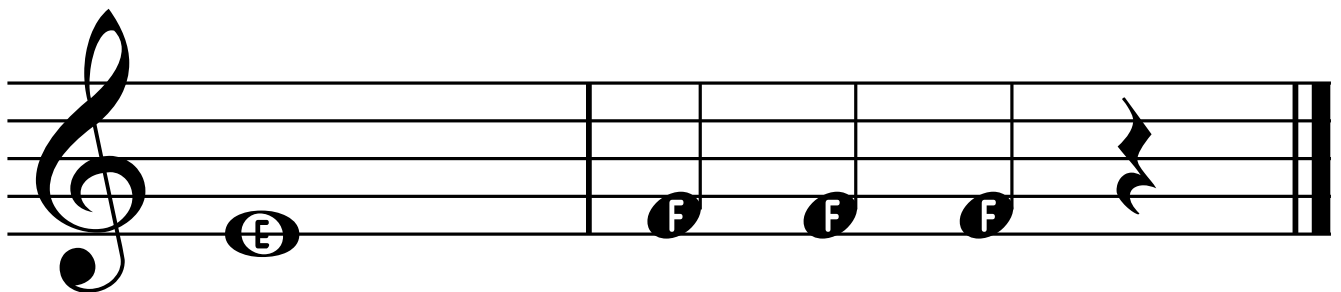
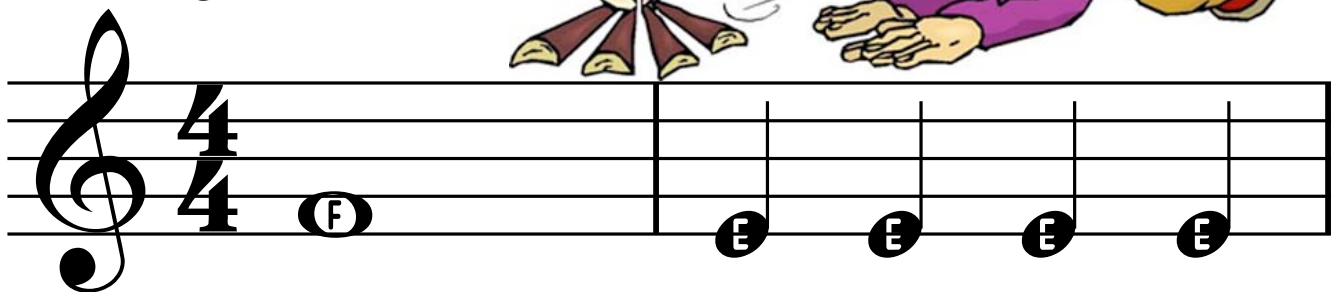





7. Catch That Note

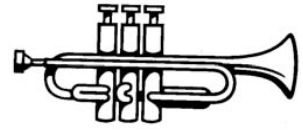


8. Keep On Blowin'



9. Our Third Note

NEW NOTE
"G"



Musical notation for exercise 9 in 4/4 time. The first staff shows a treble clef, a 4/4 time signature, and a whole note G on the second line. Below it is the word "OPEN". The second staff shows a whole rest in the first measure, a whole note G in the second measure, and a whole rest in the third measure. A large black arrow points from the first measure of the second staff to the G note in the second measure.

OPEN

Whole rests get four beats of silence.

10. Couch Potato



Musical notation for exercise 10 in 4/4 time. The first staff shows a treble clef, a 4/4 time signature, and a whole note G on the second line. The second staff shows a whole rest in the first measure, a whole note F on the second line in the second measure, and a whole rest in the third measure. The third staff shows a whole note E on the first space in the first measure, a whole rest in the second measure, a whole note G on the second line in the third measure, and a whole rest in the fourth measure.

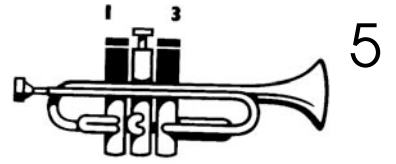
11. Puppy Dogs



Musical notation for exercise 11 in 4/4 time. The first staff shows a treble clef, a 4/4 time signature, and a sequence of notes: G (whole), G (quarter), G (quarter), a quarter rest, F (quarter), F (quarter), F (quarter), and a quarter rest. The second staff shows a sequence of notes: E (quarter), E (quarter), E (quarter), a quarter rest, G (quarter), G (quarter), G (quarter), and a quarter rest.

12. Our Fourth Note

NEW NOTE
"D"



Musical staff for exercise 12 in 4/4 time. The staff contains three measures, each with a whole note 'D' on the second line. Below the first 'D' is the text '1 & 3'. The staff ends with a double bar line.

13. Apple for the Teacher



Musical staff for exercise 13 in 4/4 time. The staff contains seven measures, each with a whole note 'D' on the second line. The staff ends with a double bar line.

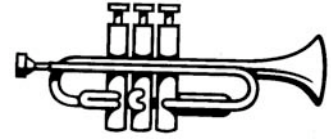
Musical staff for exercise 13 in 4/4 time. The staff contains seven measures, each with a whole note 'D' on the second line. The staff ends with a double bar line.

Musical staff for exercise 13 in 4/4 time. The staff contains seven measures with notes: D, D, E, E, F, F, E, E. Each note is on a whole note. The staff ends with a double bar line.

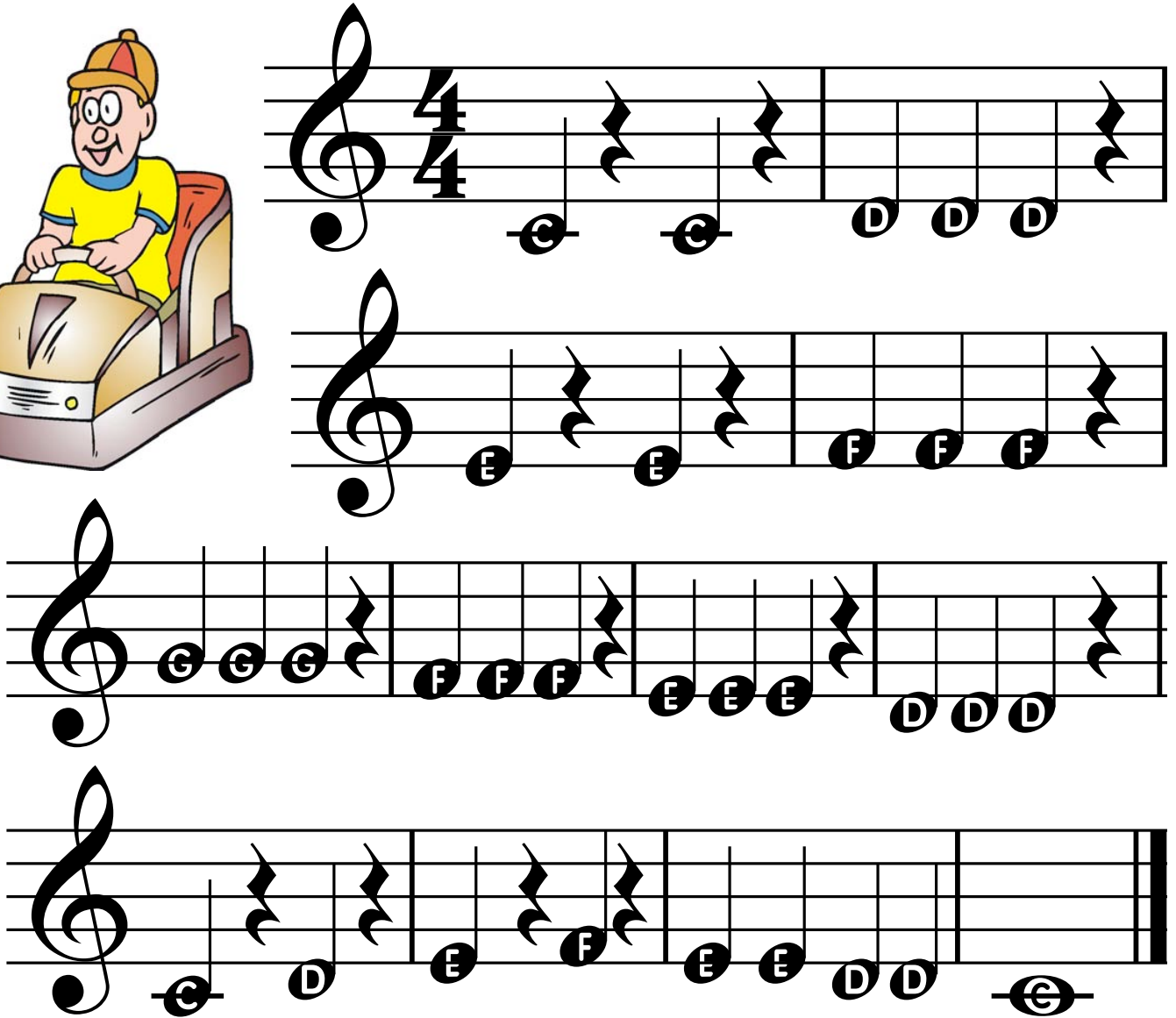
Musical staff for exercise 13 in 4/4 time. The staff contains seven measures with notes: D, E, F, E, D, D. Each note is on a whole note. The staff ends with a double bar line.

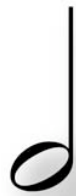
14. Our Fifth Note

NEW NOTE
"C"



15. Bumper Cars



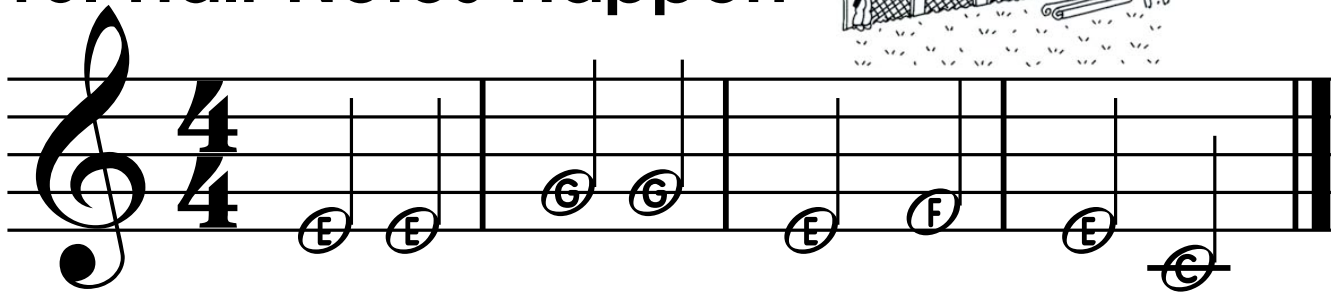


Half Note

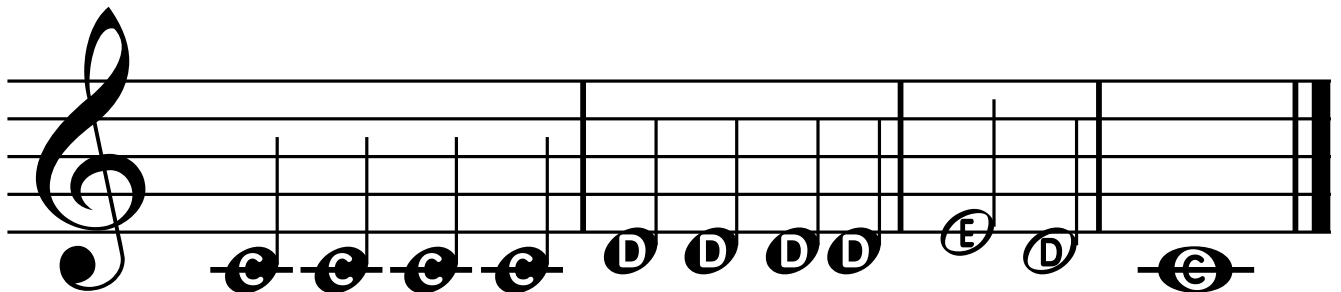
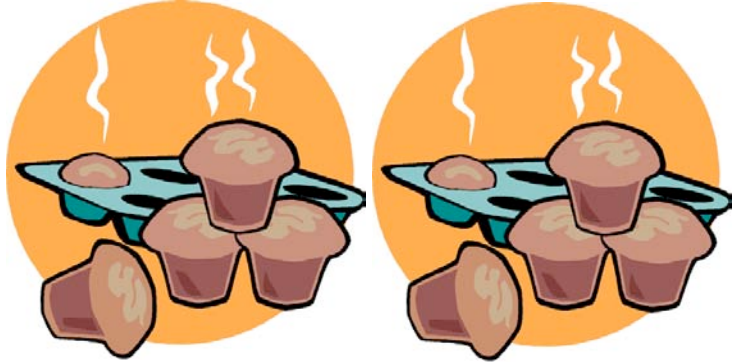
Two Beats of Sound



16. Half Notes Happen

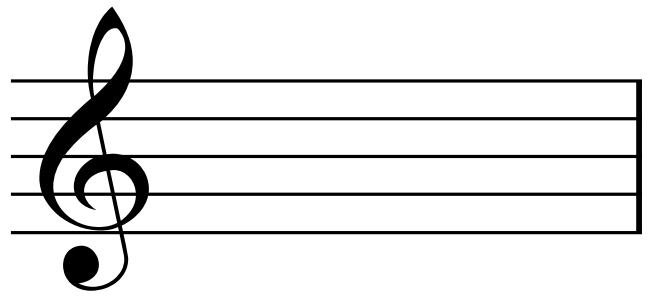


17. Hot Cross Buns



8

Notes are written on lines and spaces called the "staff".

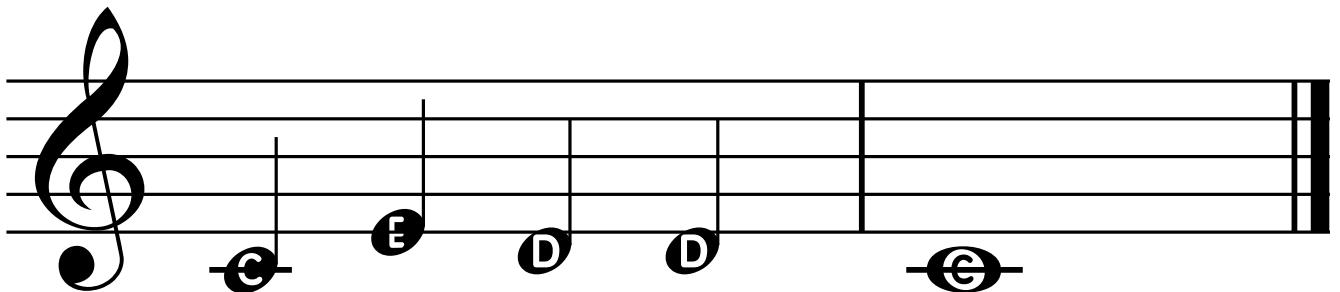
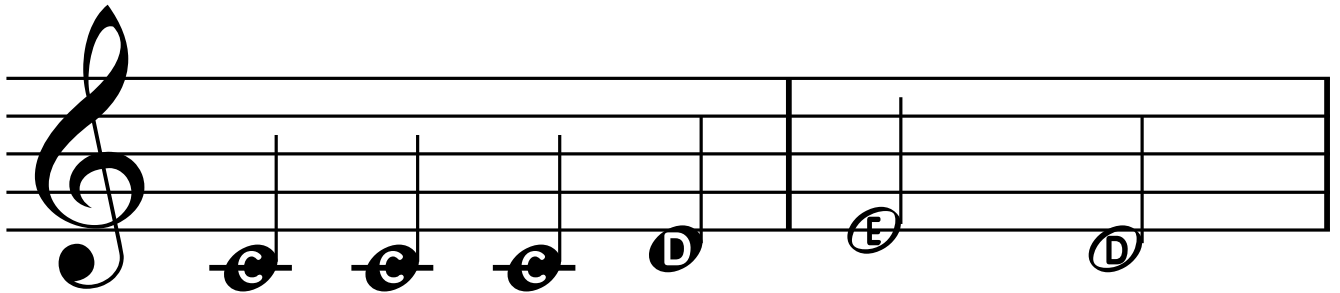
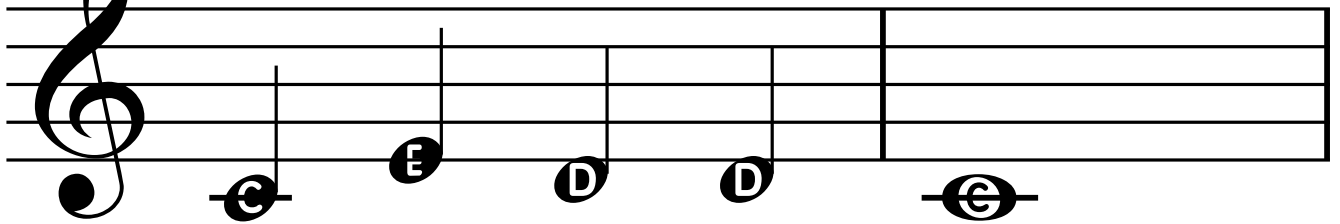
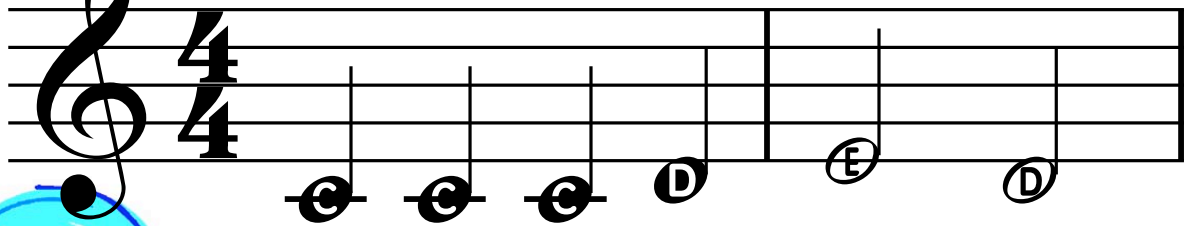


How many lines can you find?

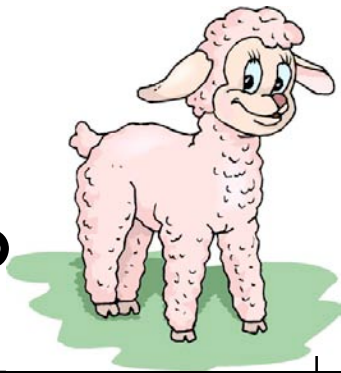
How many spaces can you find?



18. High Dive



19. Mary Had a Little Lamb



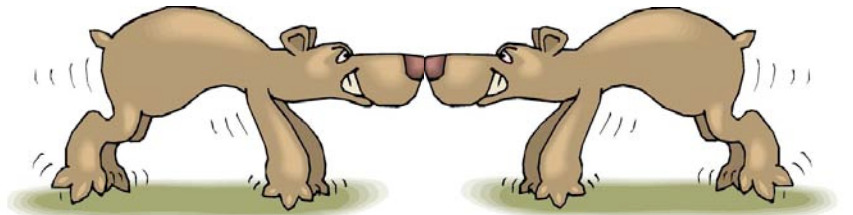
Musical notation for "Mary Had a Little Lamb" in 4/4 time, featuring a treble clef and a key signature of one flat (B-flat). The melody is written on two staves. The notes are: E4, D4, C4, D4, E4, E4, E4, D4, D4, D4, E4, G4, G4 (first staff); E4, D4, C4, D4, E4, E4, E4, D4, D4, E4, D4, G4 (second staff).



When you see this logo, follow the link for additional songs and exercises online.

www.bandfunbook.com/PAGE9

20. Bad News Bears



Musical notation for "Bad News Bears" in 4/4 time, featuring a treble clef and a key signature of one flat (B-flat). The melody is written on two staves. The notes are: E4, D4, E4, D4, C4, F4, E4 (first staff); F4, E4, D4, G4, F4, E4, D4, G4, C4 (second staff).

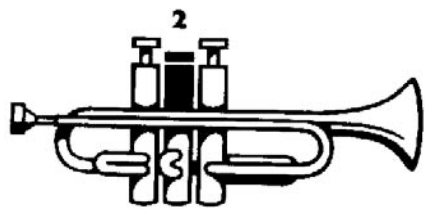


21. Dreydl, Dreydl

22. Notes Without Letters



NEW NOTE



11

LOW "B"

Blow gently.
Play easy like your "C".



23. Shoo Fly, Don't Bother Me!

24. Crazy Tonguing



Rhythm Fun



Eighth Notes

One eighth note gets 1/2 count.
Two eighth notes get ONE count.

A $\frac{4}{4}$

B $\frac{4}{4}$

C $\frac{4}{4}$

D $\frac{4}{4}$

E $\frac{4}{4}$





25. Yankee Doodle Cha Cha

Musical notation for 'Yankee Doodle Cha Cha' in 4/4 time. The melody is written on two staves. The notes are: C4, C4, D4, D4, E4, C4, E4, D4, D4, D4, C4, C4, D4, D4, E4, C4, D4, D4, D4, C4, C4, C4, C4.

26. Caribbean Cruise



Musical notation for 'Caribbean Cruise' in 4/4 time. The melody is written on two staves. The notes are: F3, G3, A3, A3, A3, G3, D3, E3, F3, G3, G3, G3, F3, C3, F3, G3, A3, A3, A3, G3, G3, E3, G3, E3, F3, C3.

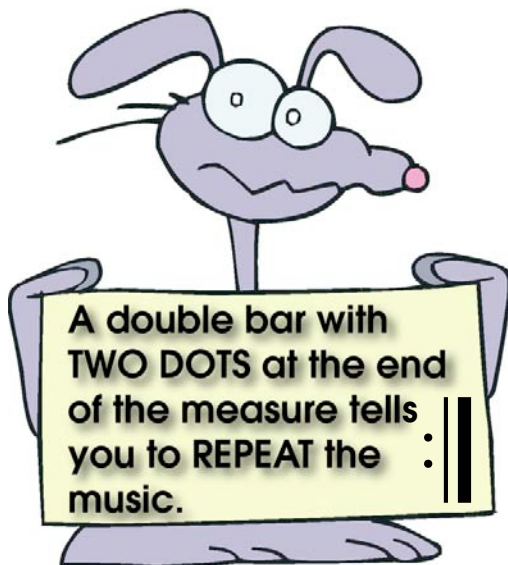
27. Country Hoe Down



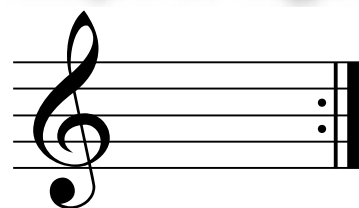
Musical notation for 'Country Hoe Down' in 4/4 time. The melody is written on two staves. The notes are: C4, C4, C4, D4, D4, E4, C4, C4, D4, E4, E4, E4, D4, C4, D4, D4, C4, C4, D4, D4, E4, E4, E4, F4, G4, F4, F4, E4, D4, C4, C4.



28. Eighth Note Slide

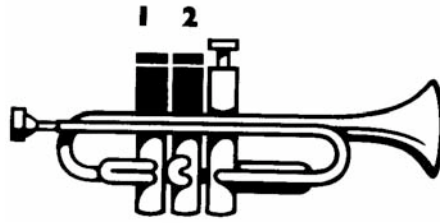


Repeat Sign



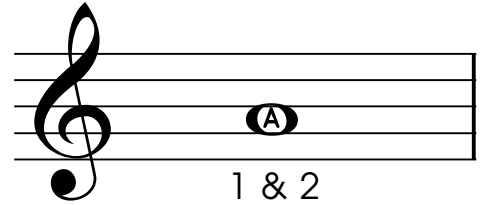
29. The Cabbage Song



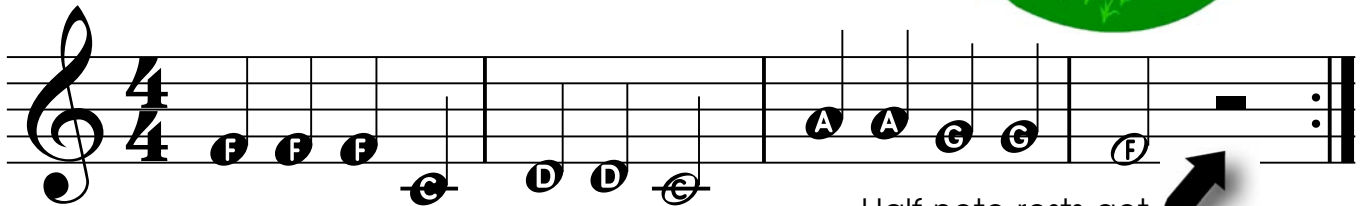


Firm corners! 15
Lots of air!
Blow high like your "G".

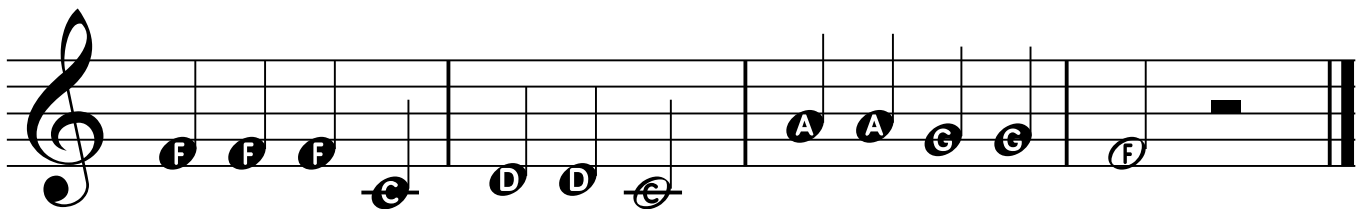
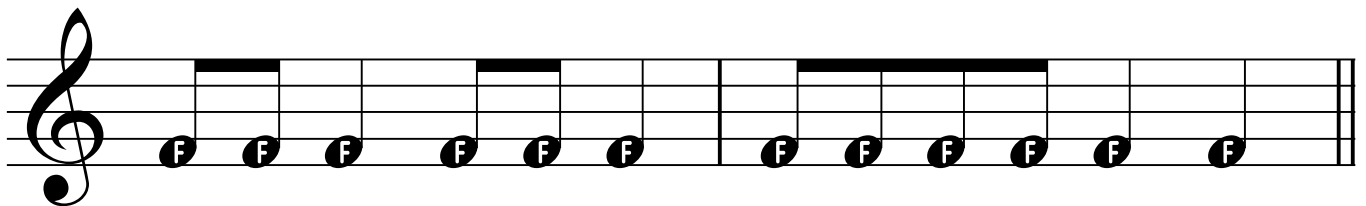
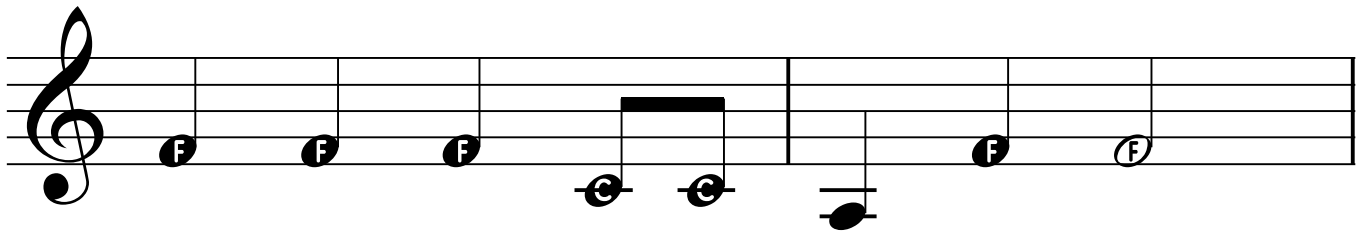
NEW NOTE "A"

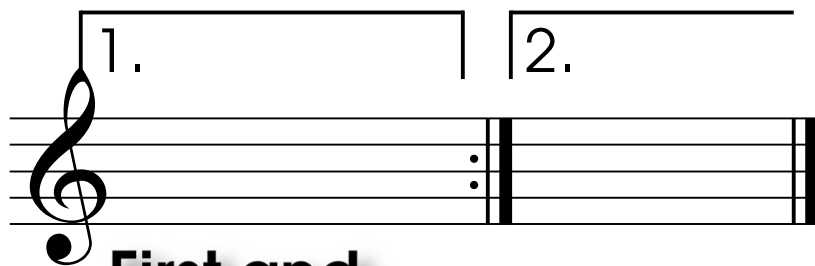


30. Old MacDonald Had a Farm



Half note rests get two beats of silence.

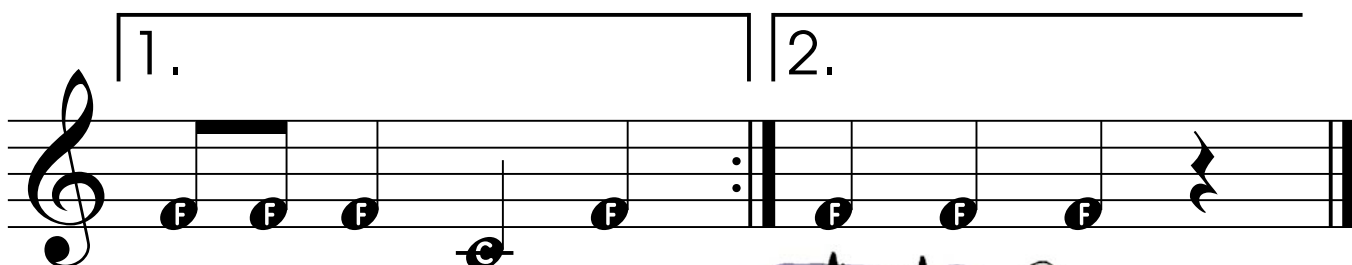
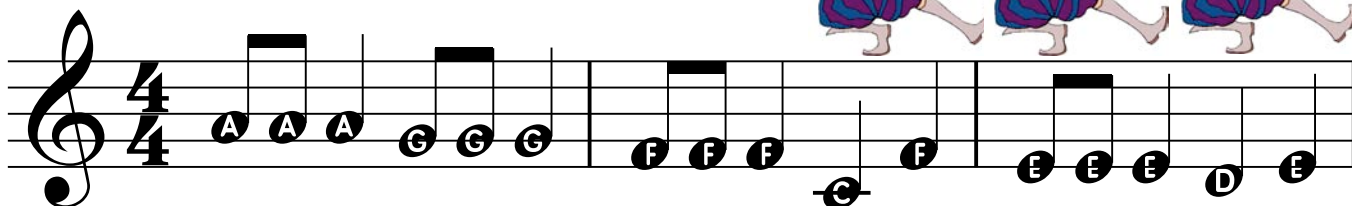




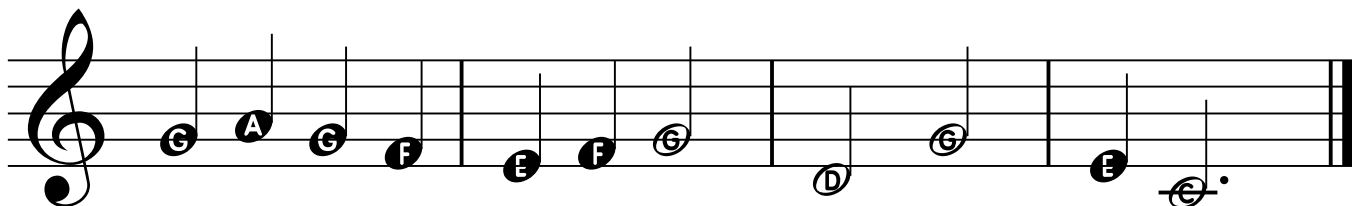
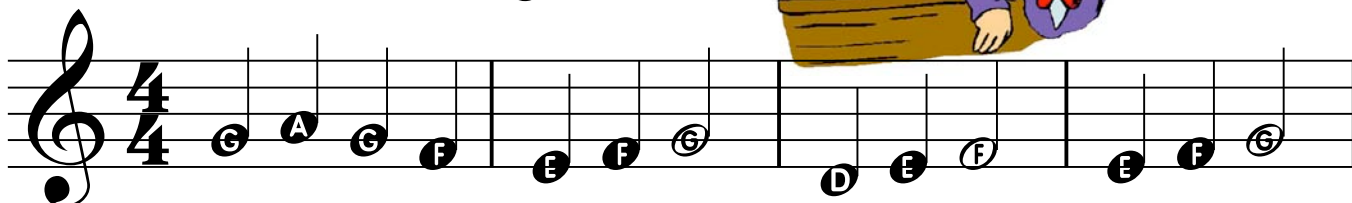
First and Second Endings

When you reach the repeat sign under the first ending, stop and go back to the beginning. When you get to the first ending again, skip it and go to the second ending.

31. Stodola Pumpa



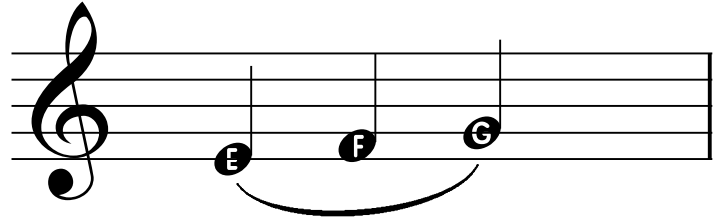
32. London Bridge





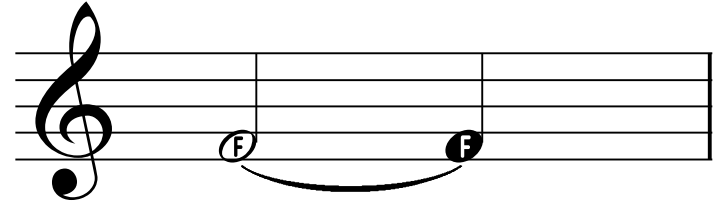
Slur

A "slur" is a curved line that connects two or more notes of different pitches. Tongue the first note and move to the next notes without tonguing. Don't stop blowing.

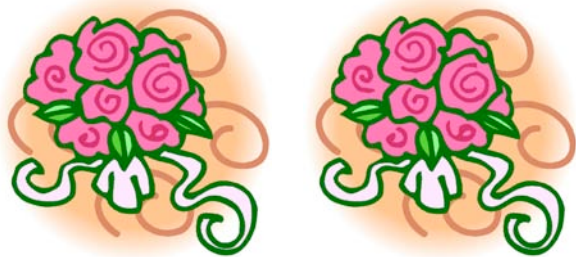


Tie

A "tie" is a curved line that connects two or more notes of the same pitch. Hold the note for the combined value of the notes.



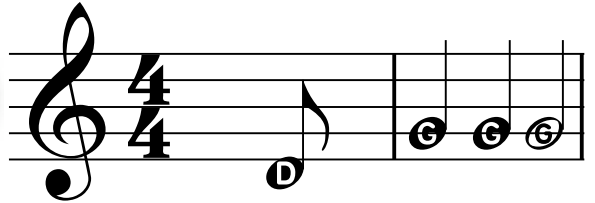
33. Southern Roses





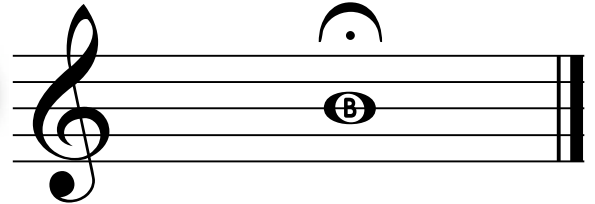
Pick-Up Notes

Note(s) that come before the first full measure of a piece of music.

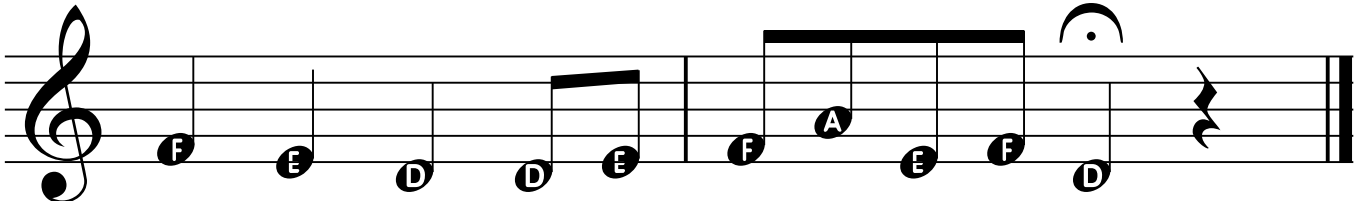
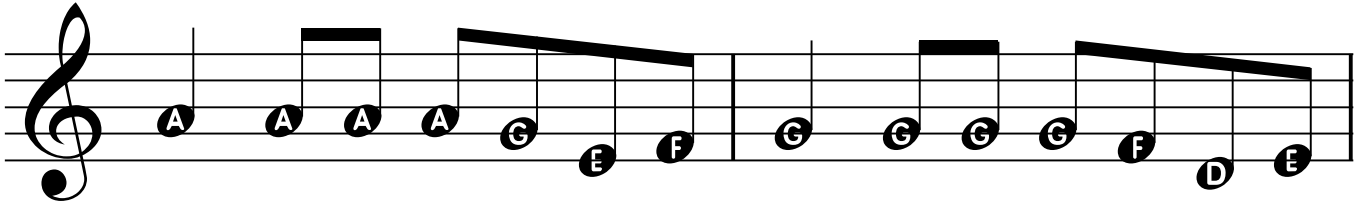
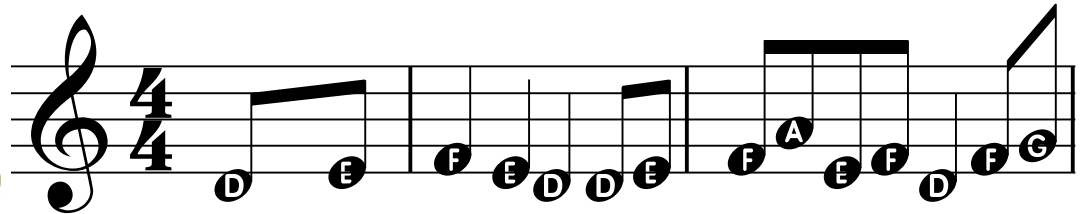


Fermata (Hold)

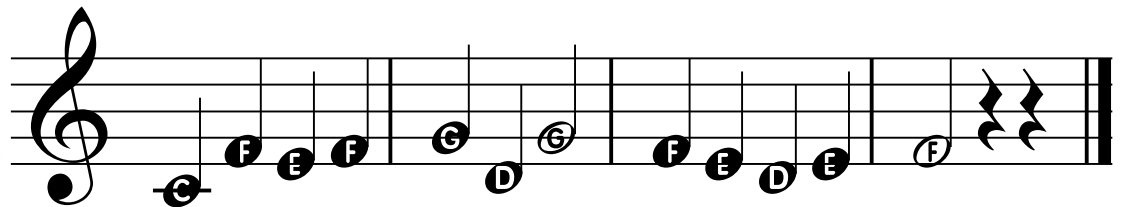
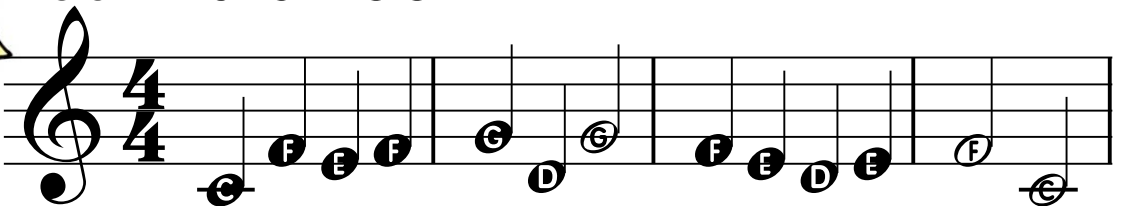
Hold (keep blowing) the note until your director tells you to stop,



34. Snake Charmer

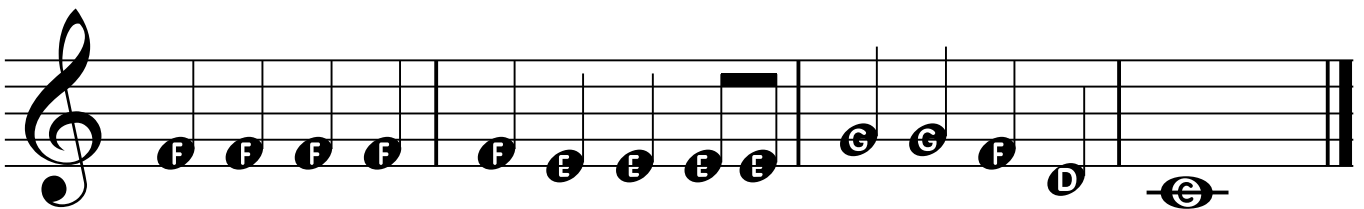
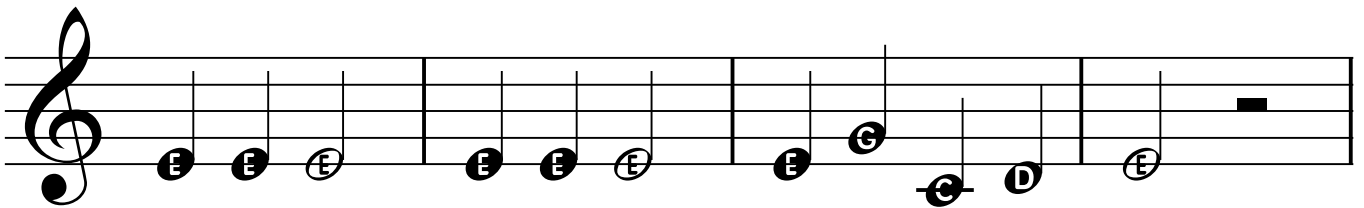
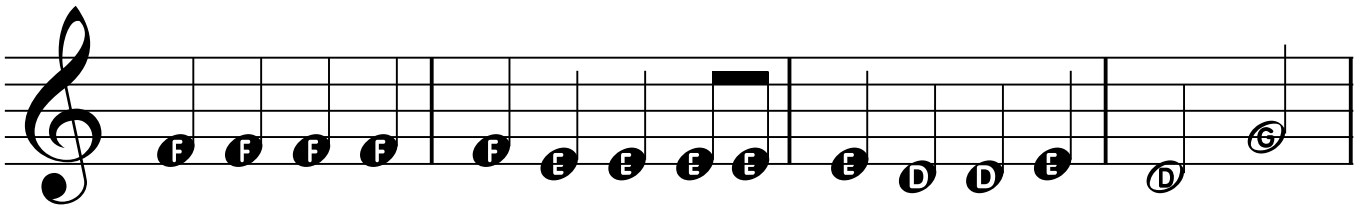
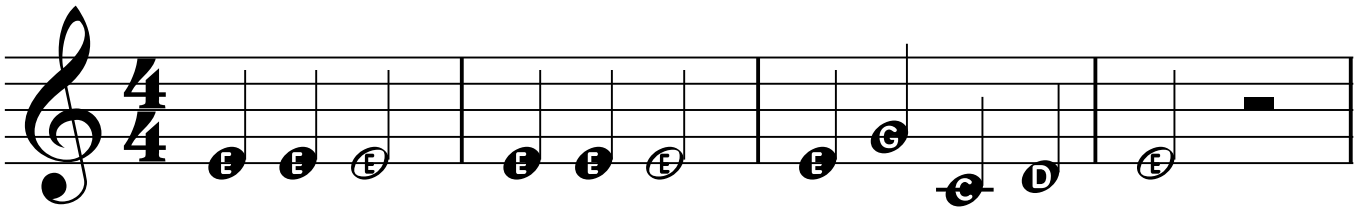


35. Aura Lee





36. Jingle Bells





D.C. al Fine

Go back to the beginning and play until "Fine".

37. Twinkle, Twinkle, Little Star

Fine

D. C. al Fine



D.S. al Fine

Go back to the sign and play until "Fine".



The "sign"



38. Ode to Joy

Fine

D.S. al Fine



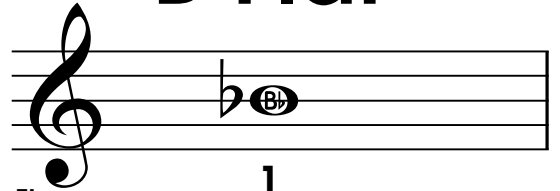
Flat Sign



NEW NOTE



"B Flat" 21

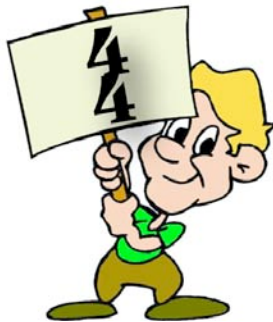
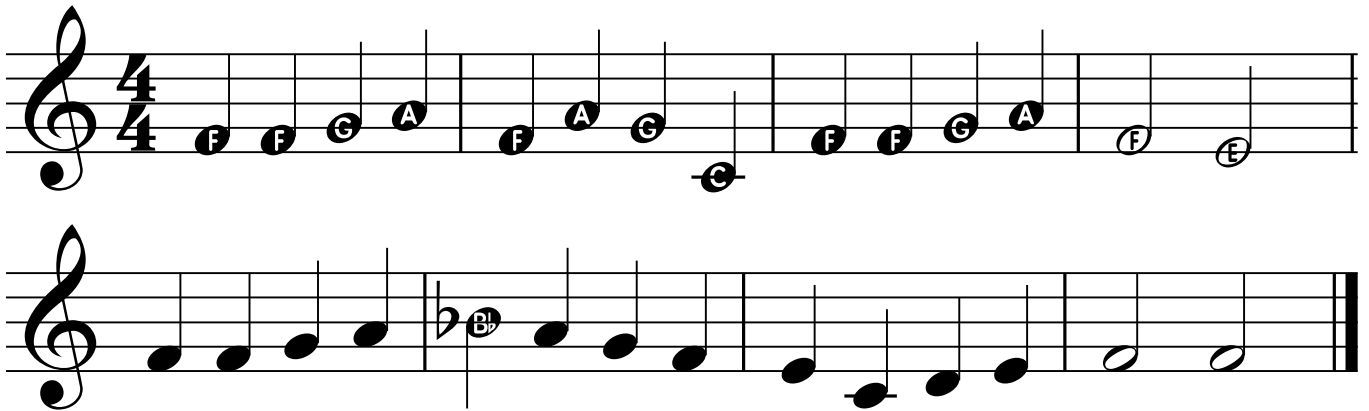


Firm corners. 1

Same fingering as "F" but blow faster.

A "flat" lowers the note one half step. It stays in effect for the entire measure.

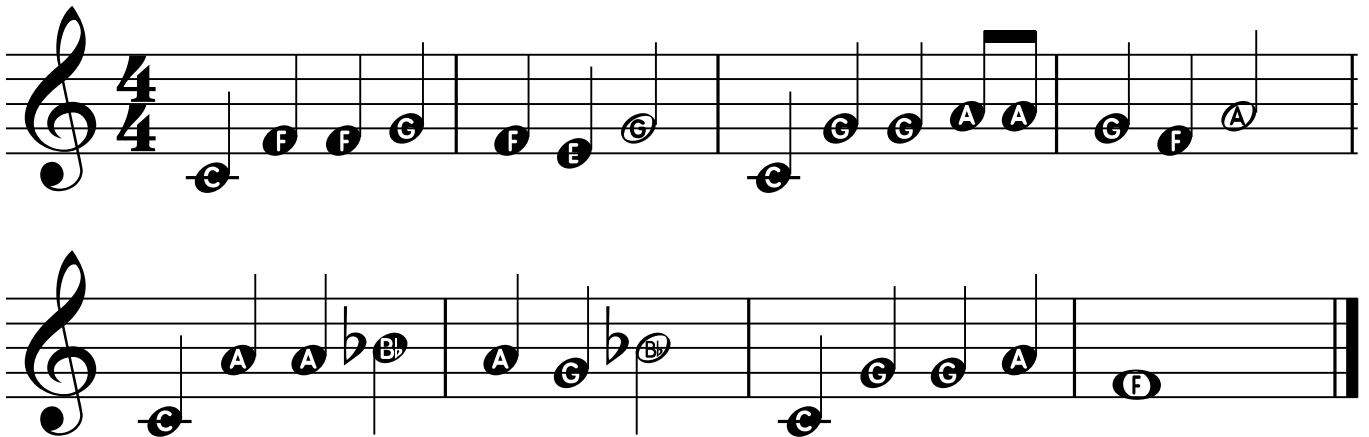
39. Yankee Doodle



Time Signature

A "time signature" tells you how many beats there are in each measure of music.

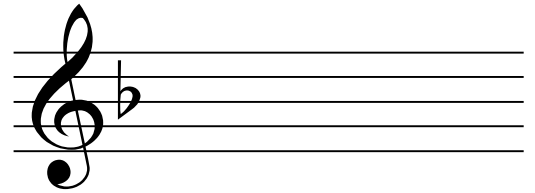
40. Little Cabin in the Wood





Key Signature

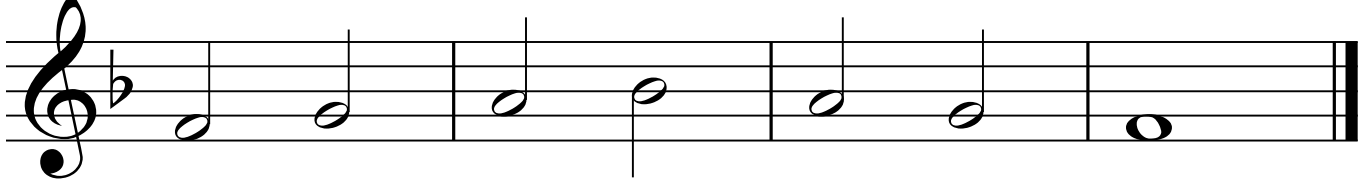
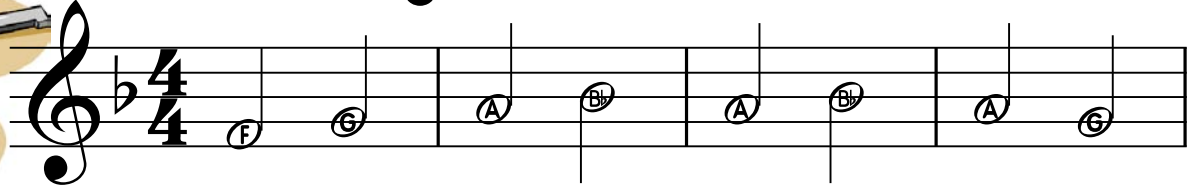
A "key signature" changes certain notes throughout a piece of music.



When you see this key signature, play all the B's as B FLATS.

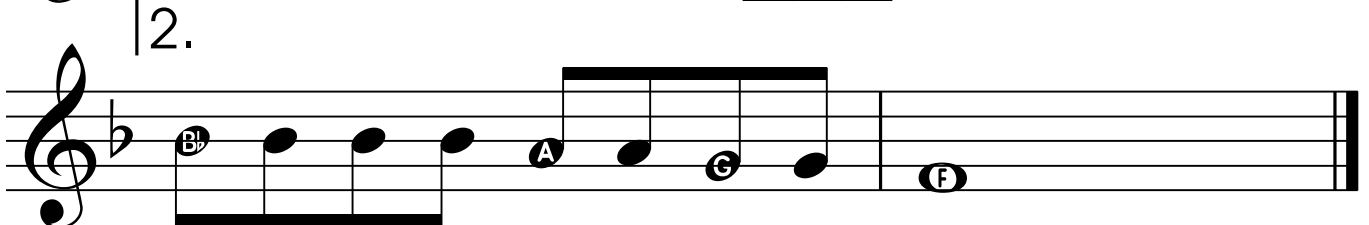
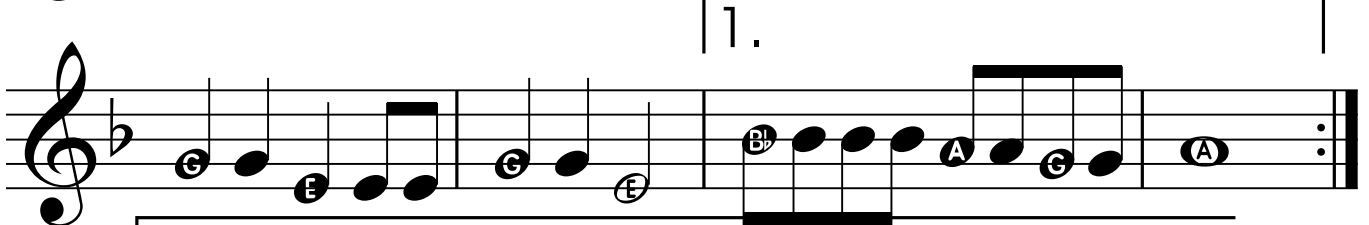
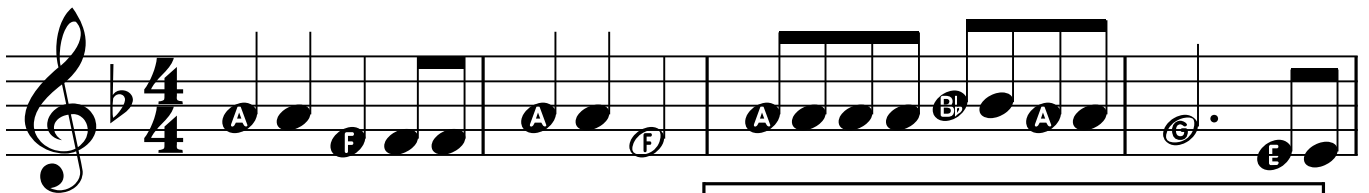


41. It's a Ringer!



www.bandfunbook.com/PAGE22

42. Polly Wolly Doodle



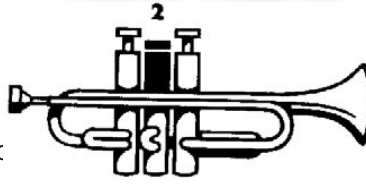


Sharp Sign

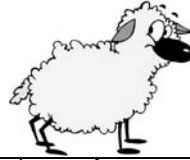


NEW NOTE "F Sharp"

A "sharp" raises the note one half step. It is in effect for the entire measure.



43. Mary's Other Lamb



Musical notation for "Mary's Other Lamb" in 4/4 time. The melody is written on a treble clef staff. The notes are: F# (quarter), E (quarter), D (quarter), E (quarter), F# (quarter), F# (quarter), F# (quarter), E (quarter), E (quarter), E (quarter), F# (quarter), A (quarter), A (quarter). The key signature has one sharp (F#).

44. O Come Little Children (Melody)



Musical notation for "O Come Little Children (Melody)" in 4/4 time. The melody is written on a treble clef staff. The notes are: A (quarter), A (quarter), F# (quarter), A (quarter), G (quarter), F# (quarter), G (quarter), E (quarter), G (quarter), F# (quarter), A (quarter). The key signature has one sharp (F#).

45. O Come Little Children (Harmony)



Musical notation for "O Come Little Children (Harmony)" in 4/4 time. The melody is written on a treble clef staff. The notes are: F# (quarter), F# (quarter), D (quarter), F# (quarter), F# (quarter), E (quarter), E (quarter), E (quarter), D (quarter), F# (quarter). The key signature has one sharp (F#).

46. Jolly Old St. Nick



Musical notation for "Jolly Old St. Nick" in 2/4 time. The melody is written on a treble clef staff. The notes are: A4, G4, F4, A4, D5, C5, B4, A4, G4, F4, E4, D4. The first ending is marked with a box containing "1." and the second ending with a box containing "2.". The first ending notes are: C3, C3, F3, E3, F3, G3, A3, G3. The second ending notes are: G3, F3, G3, A3, F3.

The Israeli National Anthem, HATIKVA, means "The Hope." Hatkiva expresses the hope of the Jewish people that they would someday return to the land of their forefathers.



47. Hatikvah

Musical notation for "Hatikvah" in 4/4 time. The melody is written on a treble clef staff with a key signature of one flat (Bb). The notes are: D4, E4, F4, G4, A4, A4, Bb4, A4, Bb4, Bb4, A4. The second line of notation shows the continuation: G4, G4, E4, F4, F4, E4, D4, E4, F4, D4.

48. Slippery Slurs



Musical notation for "Slippery Slurs" in 4/4 time. The melody is written on a treble clef staff. The notes are: G4, E4, E4, F4, D4, B3, C4, E4, G4, E4, D4, E4. Slurs are placed under the notes to indicate a smooth, continuous line.



Round

Playing the same music beginning at different times.

49. Are You Sleeping?

a Four Part Round



Dynamics

p

Piano

Play with a soft volume.

f

Forte

Play with a full volume.

50. Minka, Minka

51. Rollin' Back and Forth

Use only first and second valves.

First measure think "Tah-Eee-Ah".



Dotted Quarter Note

A dotted quarter note gets one and one half counts.



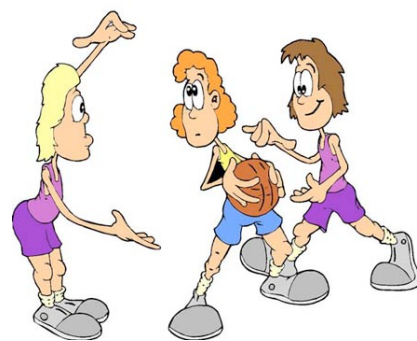
52. America



Musical score for 'America' in 3/4 time. The score consists of four staves of music. The first staff begins with a treble clef, a 3/4 time signature, and a dynamic marking of *p* (piano). The notes are G4, G4, D4, B3, G4, D4, E4, E4, F4, E4, D4, G4. The second staff has a dynamic marking of *f* (forte) and notes D4, C4, B3, G3, G4, G4, G4, G4, F4, E4. The third staff has a dynamic marking of *p* and notes F4, F4, F4, F4, E4, D4, E4, F4, E4, D4, C4. The fourth staff has a dynamic marking of *f* and notes E4, F4, G4, A4, F4, E4, D4, C4.



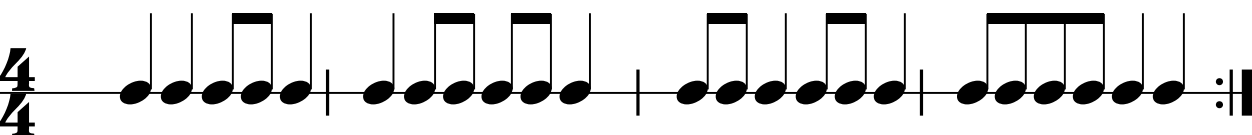
www.bandfunbook.com/PAGE26

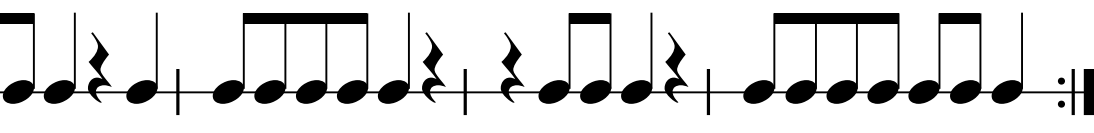


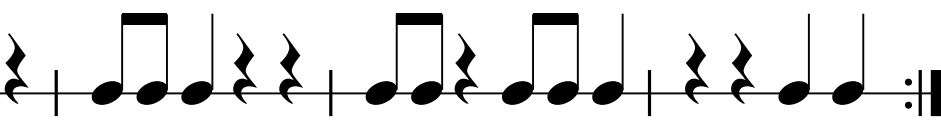
53. Technical Foul

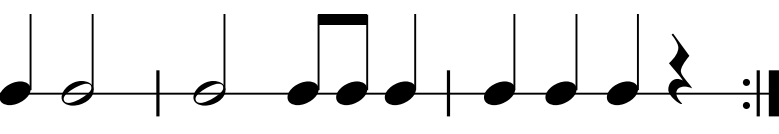
Musical score for 'Technical Foul' in 4/4 time. The score consists of two staves of music. The first staff has a treble clef and a 4/4 time signature. The notes are G4, F4, E4, D4. The second staff has notes G4, D4, E4, D4, C4.

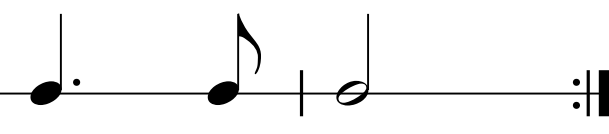
Rhythm Fun

A $\frac{4}{4}$ 

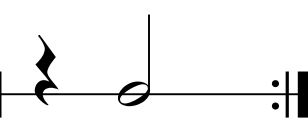
B $\frac{4}{4}$ 

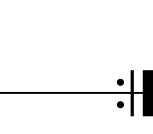
C $\frac{4}{4}$ 

D $\frac{4}{4}$ 

E $\frac{2}{4}$ 

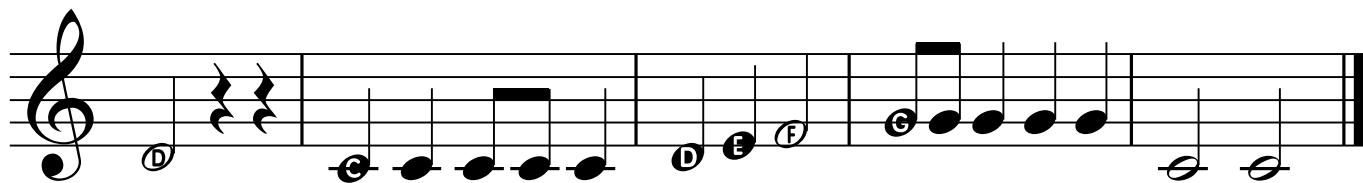
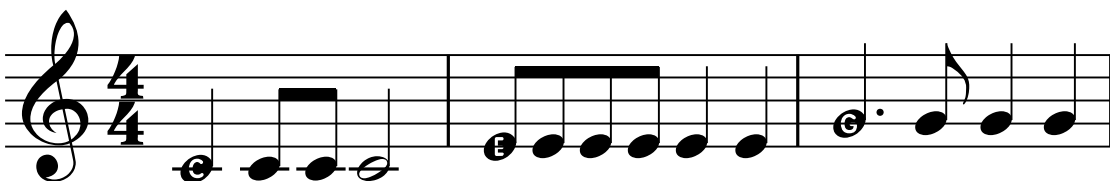
F $\frac{3}{4}$ 

G $\frac{3}{4}$ 

H $\frac{3}{4}$ 



54. Rhythm Wreck

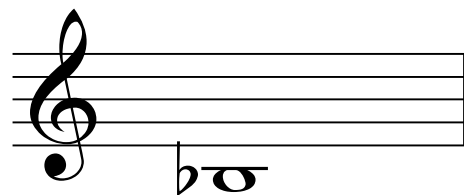


NEW NOTE



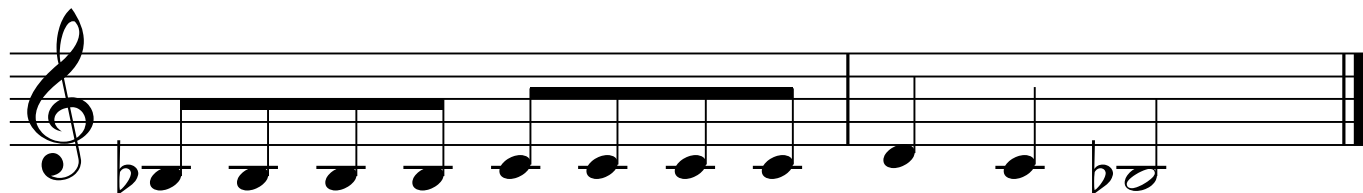
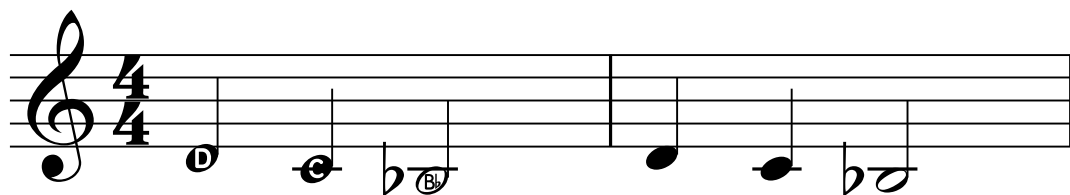
Blow low like a "C".

"LOW B FLAT"



1

55. More Hot Cross Buns



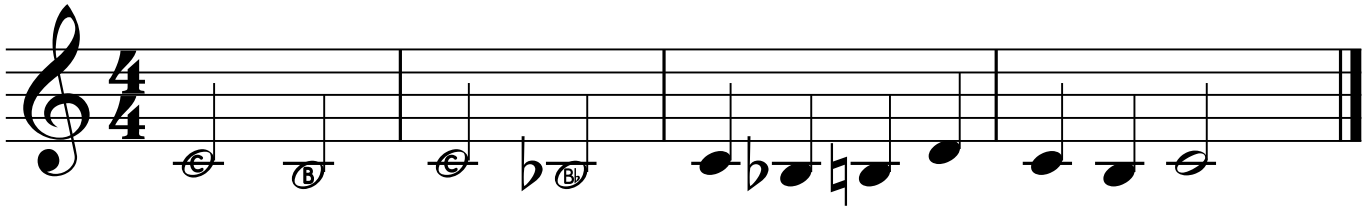


Natural Sign

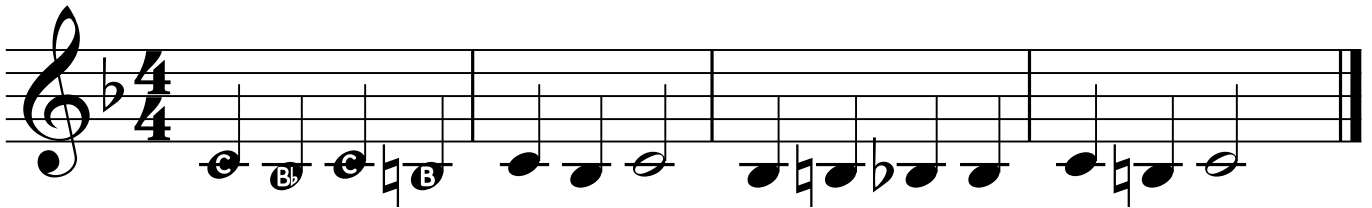


A natural sign cancels a flat or a sharp.
It remains in effect for the entire measure.

56. It Just Comes Naturally



57. Don't Be Fooled



Accent Sign



An accent sign tells you to play the note with more emphasis.



Eighth Rest



An eighth rest gets one half beat of silence.



58. Go, Fight, Win!



30

59. Bach Minuet

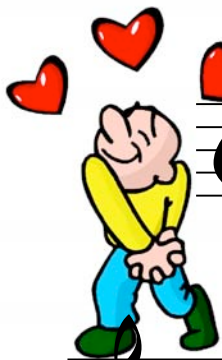


Musical notation for the Bach Minuet. It consists of two staves in 2/4 time. The first staff starts with a treble clef, a key signature of one flat (B-flat), and a common time signature (C). The melody begins with a half note G4, followed by quarter notes F4, E4, D4, and C4. The second staff continues the melody with quarter notes B3, A3, G3, and F3, followed by a repeat sign with first and second endings. The first ending leads back to the beginning, and the second ending concludes with a half note G3.

60. Rueben and Rachel

Musical notation for the song 'Rueben and Rachel'. It consists of two staves in 2/4 time. The first staff starts with a treble clef, a key signature of two flats (B-flat and E-flat), and a common time signature (C). The melody begins with a half note B3, followed by quarter notes A3, G3, and F3. The second staff continues the melody with quarter notes E3, D3, C3, and B2, followed by a half note A2. Dynamics markings include *f* (forte) and *p* (piano). There are also accents (>) over some notes.

61. When Love Is Kind



Musical notation for the song 'When Love Is Kind'. It consists of two staves in 3/4 time. The first staff starts with a treble clef, a key signature of one flat (B-flat), and a common time signature (C). The melody begins with a half note G4, followed by quarter notes F4, E4, and D4. The second staff continues the melody with quarter notes C4, B3, A3, and G3, followed by a half note F3.



Dynamics

mp

Mezzo Piano

Play with a medium soft volume. 31

mf

Mezzo Forte

Play with a medium loud volume.

62. Mexican Hat Dance




mp *mf* *f*

63. Blues Dues

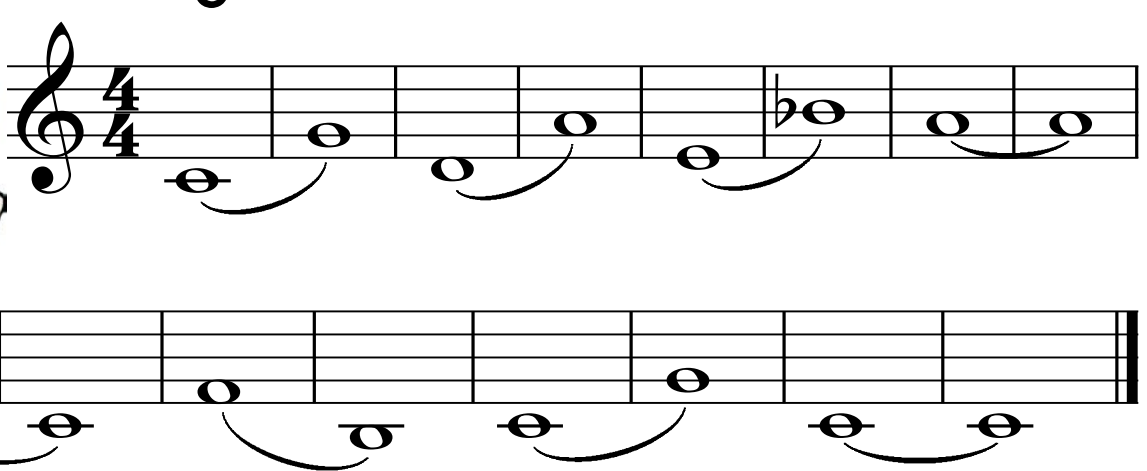


G A B^b A G E

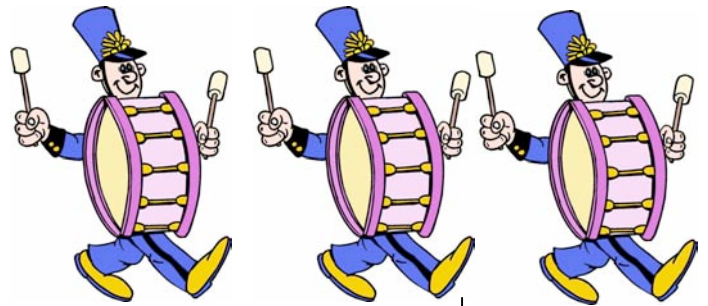
64. Big Breath Slurs



64. Big Breath Slurs

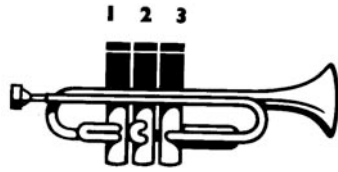


65. When the Saints Go Marchin' In






NEW NOTE



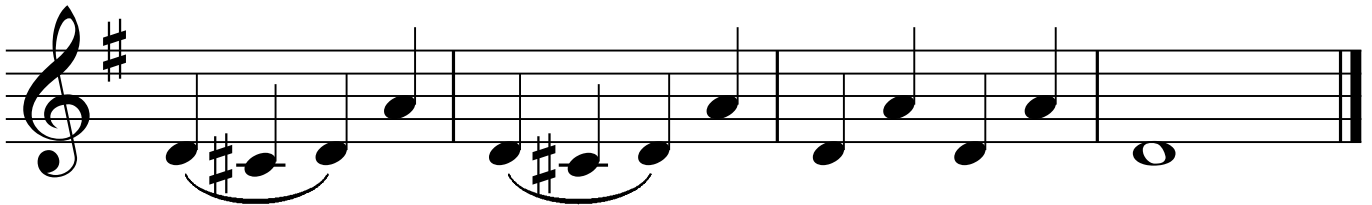
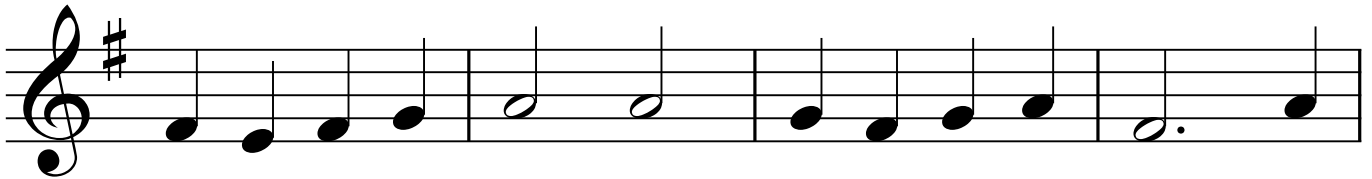
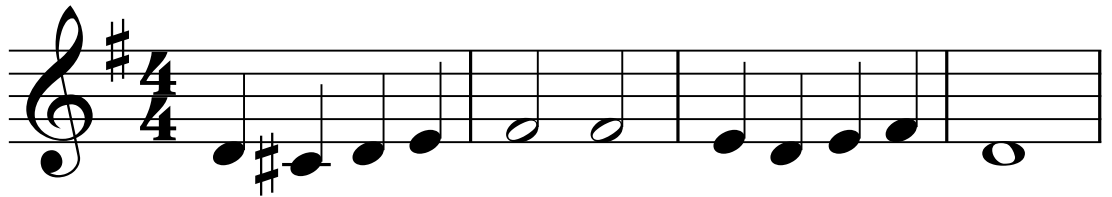
C SHARP



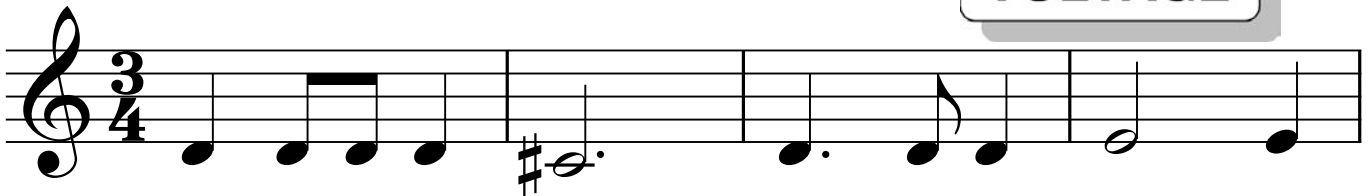
123



68. Sweetly Sings the Donkey

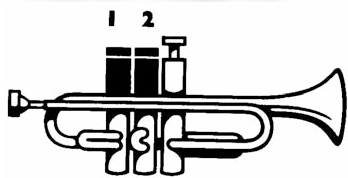


69. Danger! Tricky Rhythms



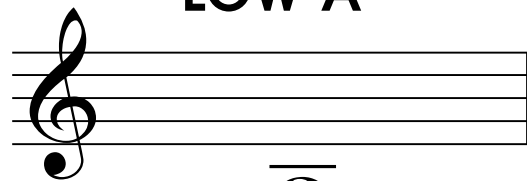


NEW NOTE



LOW A

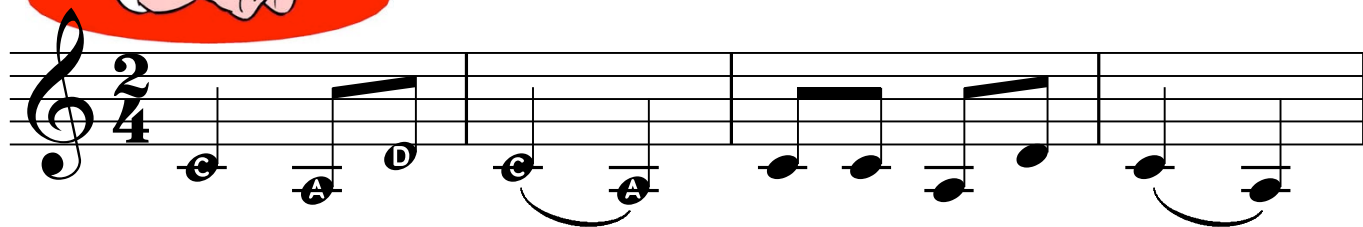
35



12



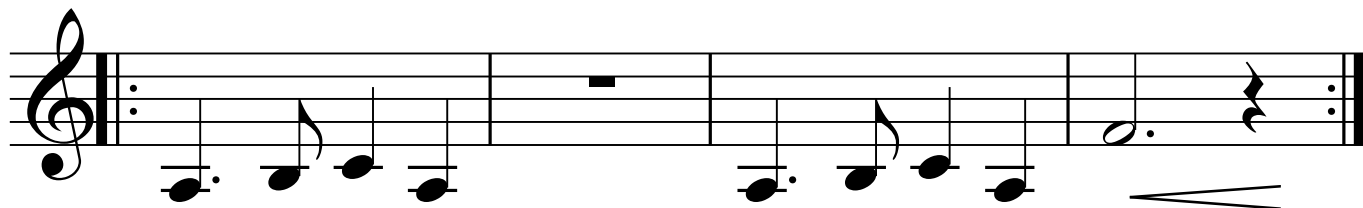
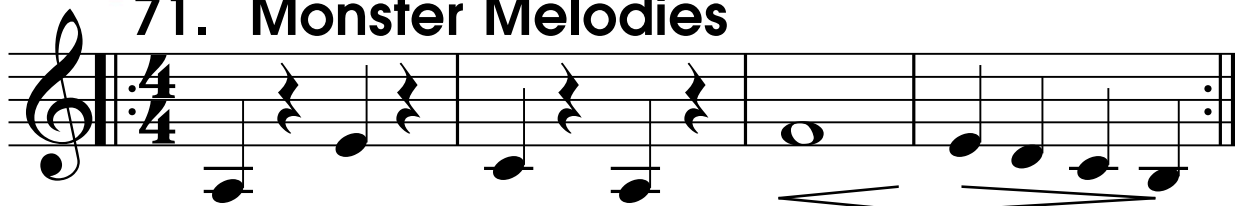
70. Bye, Baby Bunting



Crescendo *Get louder*

Decrescendo *Get softer*

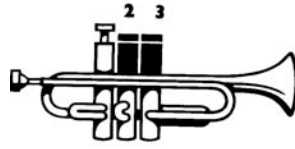
71. Monster Melodies



36



NEW NOTE



G SHARP



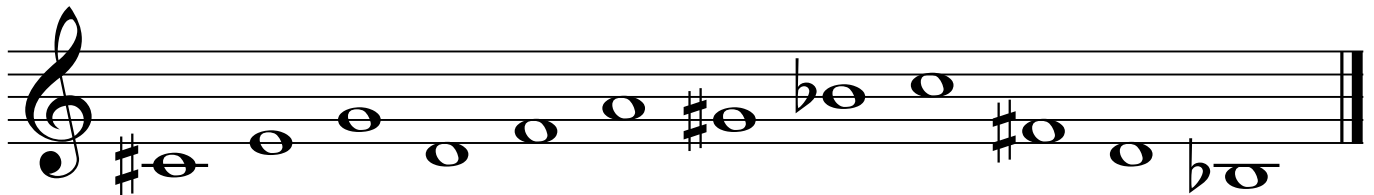
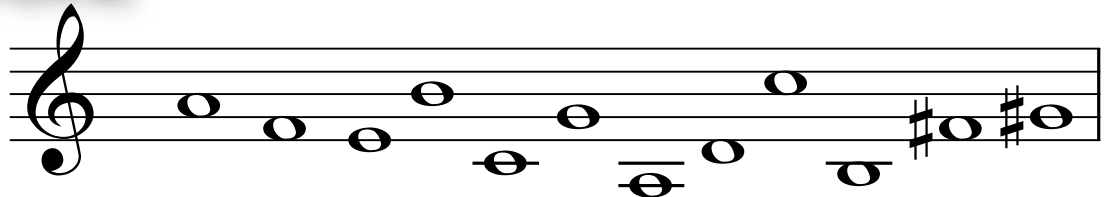
23

72. Barcarolle



Fun Work

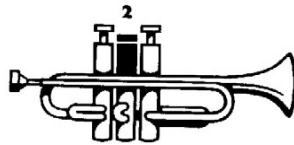
Write in the letters to these notes.



Lip Builders

0 2 1 12

23 13 123



NEW NOTE High "B"

2



NEW NOTE High "C"

OPEN

Super Slurs

0 2 1 12

23 13 123

74. Can Can



Musical notation for "Can Can" in 2/4 time, featuring a treble clef and a key signature of one flat (Bb). The melody is written on a single staff with notes and rests. Chord symbols are provided below the notes: C, D, F, E, D, G, G, G, A, E, F, D, D, D, F, E, D. The piece concludes with a first ending (1.) and a second ending (2.) marked with repeat signs.

75. La Bamba

Musical notation for "La Bamba" in 4/4 time, featuring a treble clef and a key signature of two flats (Bb and Eb). The melody is written on a single staff with notes and rests. Chord symbols are provided below the notes: F, C, C, Bb, D, C, Bb, Bb, Bb, Bb, A, F, D, D, E. The piece concludes with a final cadence.

76. Simple Gifts

Musical score for "Simple Gifts" in 4/4 time, featuring a treble clef and a key signature of one flat (Bb). The score consists of three staves of music. The first staff begins with a treble clef, a key signature of one flat, and a 4/4 time signature. The melody starts on a whole note G4, followed by quarter notes A4, Bb4, and C5. The second staff continues the melody with quarter notes D5, E5, F5, and G5, then a half note G5. The third staff concludes the piece with a half note G5, followed by quarter notes F5, E5, D5, and C5, ending with a double bar line.

77. Amazing Grace

Musical score for "Amazing Grace" in 3/4 time, featuring a treble clef and a key signature of one flat (Bb). The score consists of four staves of music. The first staff begins with a treble clef, a key signature of one flat, and a 3/4 time signature. The melody starts on a whole note G4, followed by quarter notes A4, Bb4, and C5. The second staff continues with quarter notes D5, E5, F5, and G5, then a half note G5. The third staff continues with quarter notes F5, E5, D5, and C5, then a half note G5. The fourth staff concludes the piece with a half note G5, followed by quarter notes F5, E5, and D5, ending with a double bar line.

Trumpet Fingering Chart

F# or Gb	G	G# or Ab	A	A# or Bb	B	C	C# or Db	D	D# or Eb	E	F